

MOSTRA GRATUÏTA A BAXA RESOLUCIÓ. Institut Cartogràfic i Geològic de Catalunya - www.icgc.cat, 2015

Fixer digital georeferenciat GeorPDF en Sistema Geodèsic de Referència ETRS89 (elipsoide GRS80), Projectió cartogràfica UTM3 Nord

Escala 1:25 000

Legend for geological processes and features, including symbols for faults, erosion, and land use.

Legend for hydrological and geomorphological features, including symbols for rivers, streams, and erosion patterns.

Legend for dynamic processes and erosion, including symbols for erosion types and sediment transport.

Map of Catalonia showing the location of Odena and its geological context.

Agrupacions litològiques i elements estructurals 1:50 000



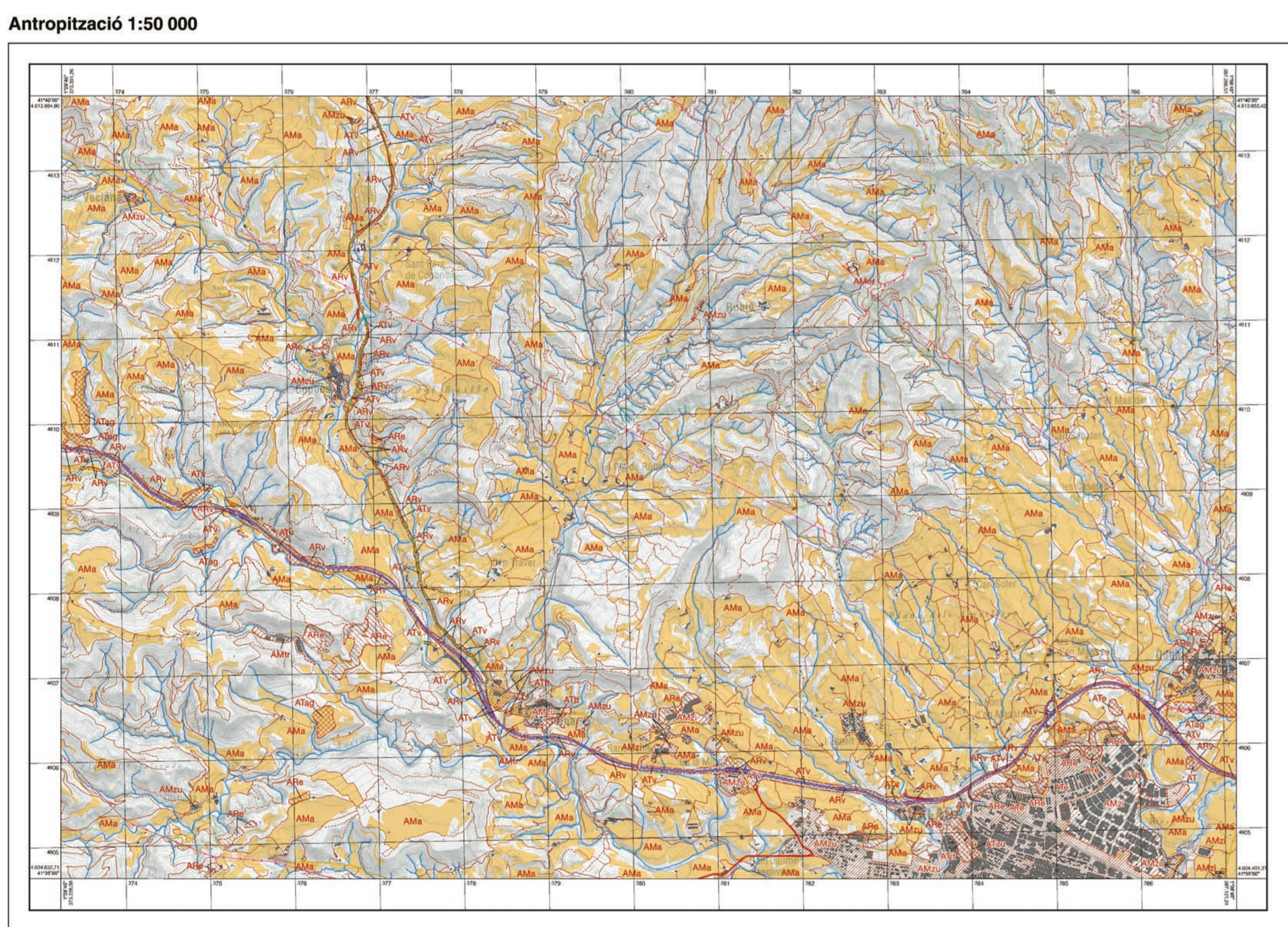
Legend for lithological units and structural elements, including symbols for various rock types and geological structures.

Legend for signs and symbols, including symbols for faults, erosion, and other geological features.

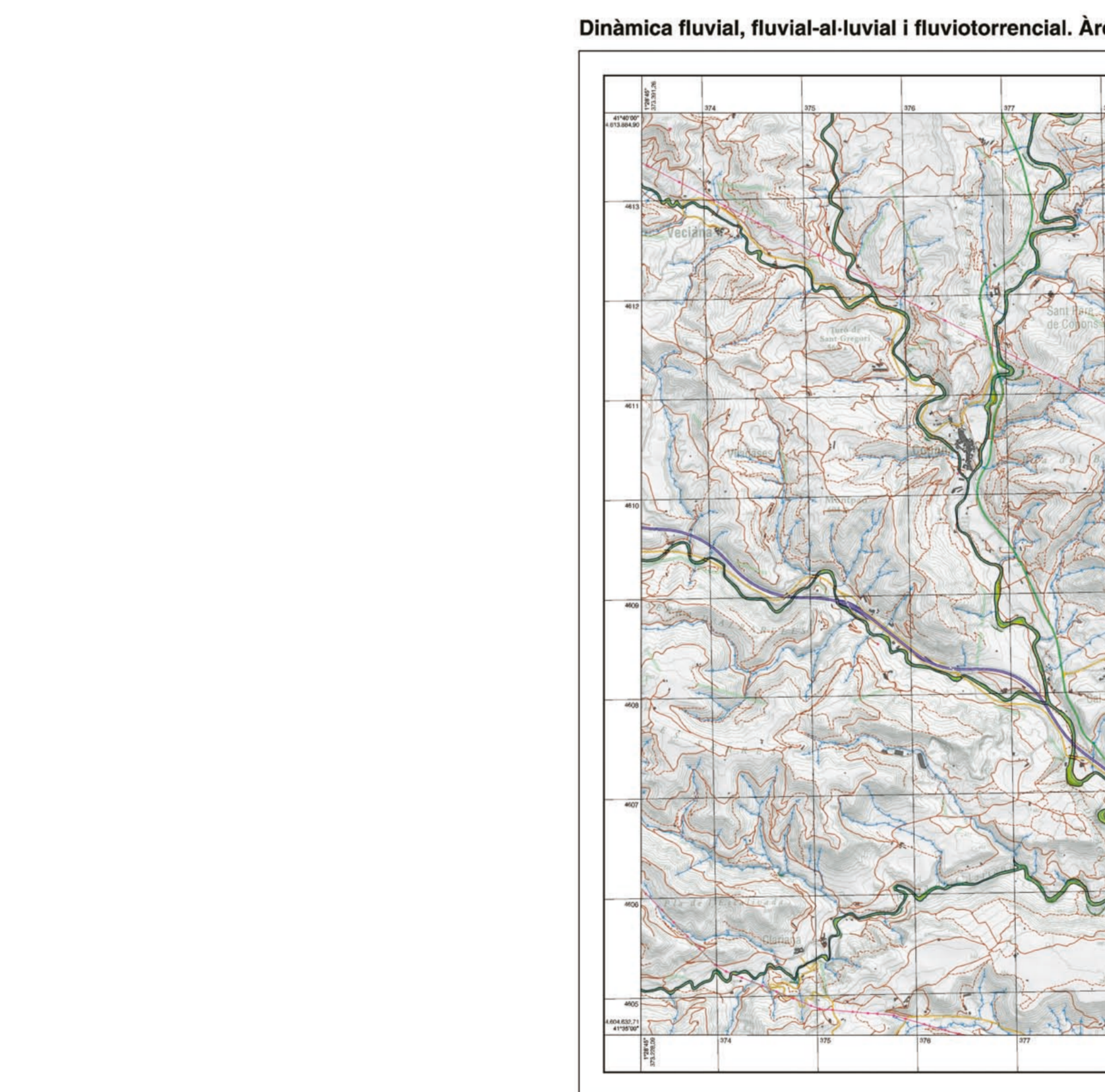
Carta de plasticitat de Casagrande (Casagrande plasticity chart) and a table of soil classification data.

Project information and contact details for the Institut Cartogràfic i Geològic de Catalunya.

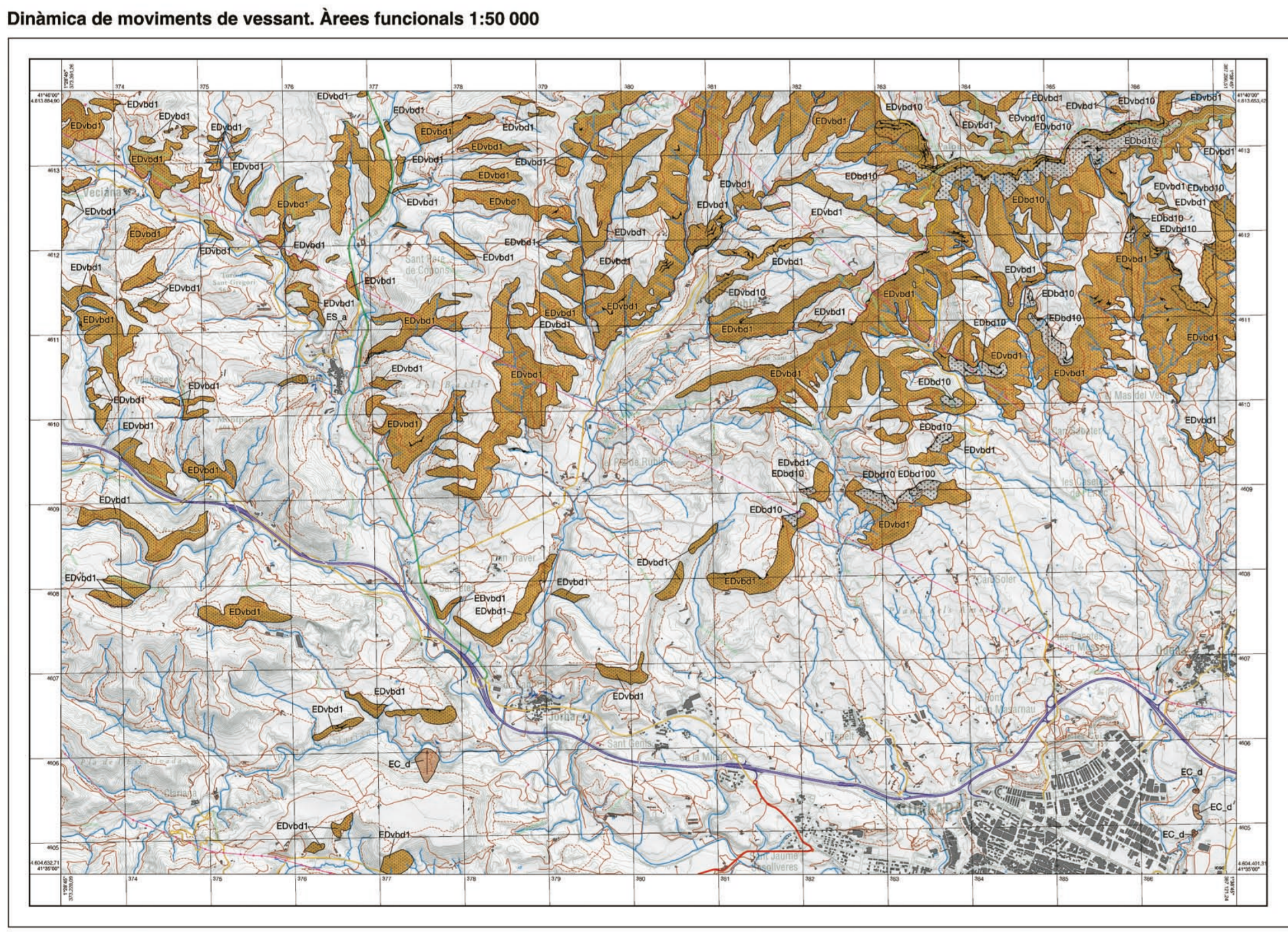
Mapa geològic dels processos actius i recents i de l'activitat antròpica. Geomtròpic 1:25 000



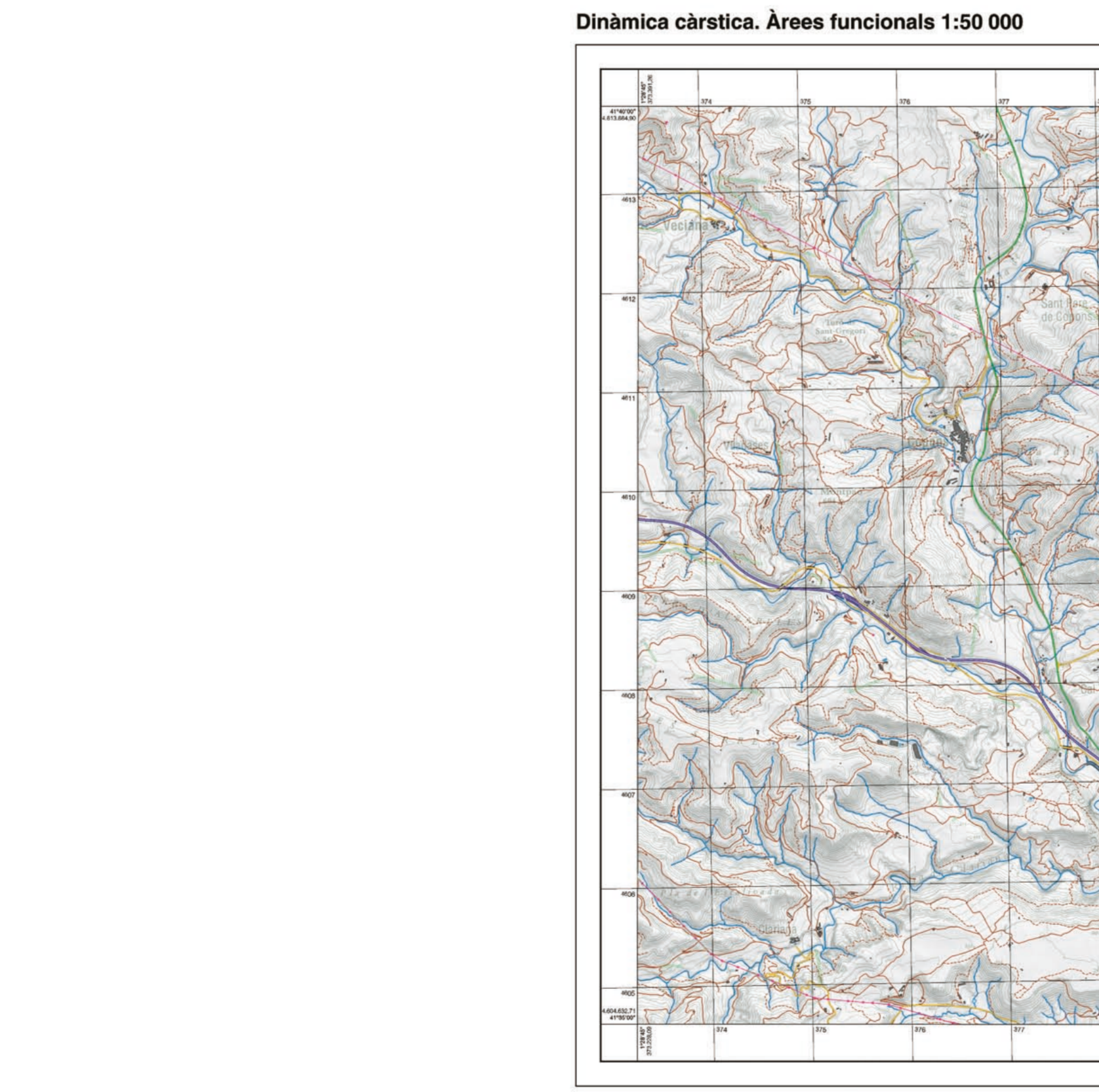
Legend for active and recent geological processes and human activity, including symbols for erosion, faults, and land use.



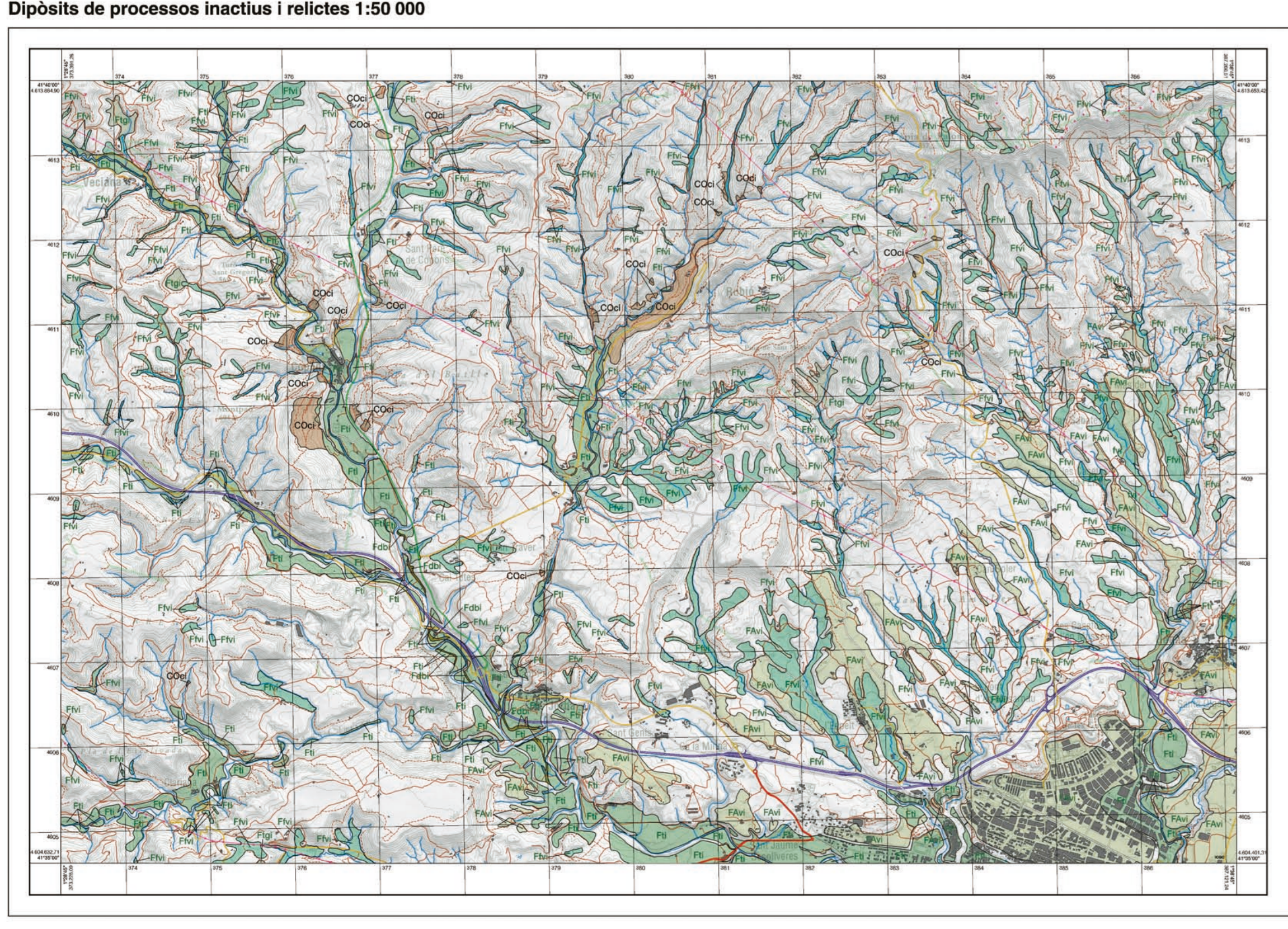
Legend for dynamic fluvial and fluvio-lacustrine processes, including symbols for erosion and sediment transport.



Legend for dynamic movement of sediments, including symbols for erosion and sediment transport.



Legend for dynamic karstic processes, including symbols for erosion and sediment transport.



Legend for deposits of inactive processes and relicts, including symbols for erosion and sediment transport.

Legend for deposits of inactive processes and relicts, including symbols for erosion and sediment transport.

Photographs of geological features in Odena, including erosion and sediment transport.

Text describing the geological processes and features shown in the photographs, including erosion and sediment transport.