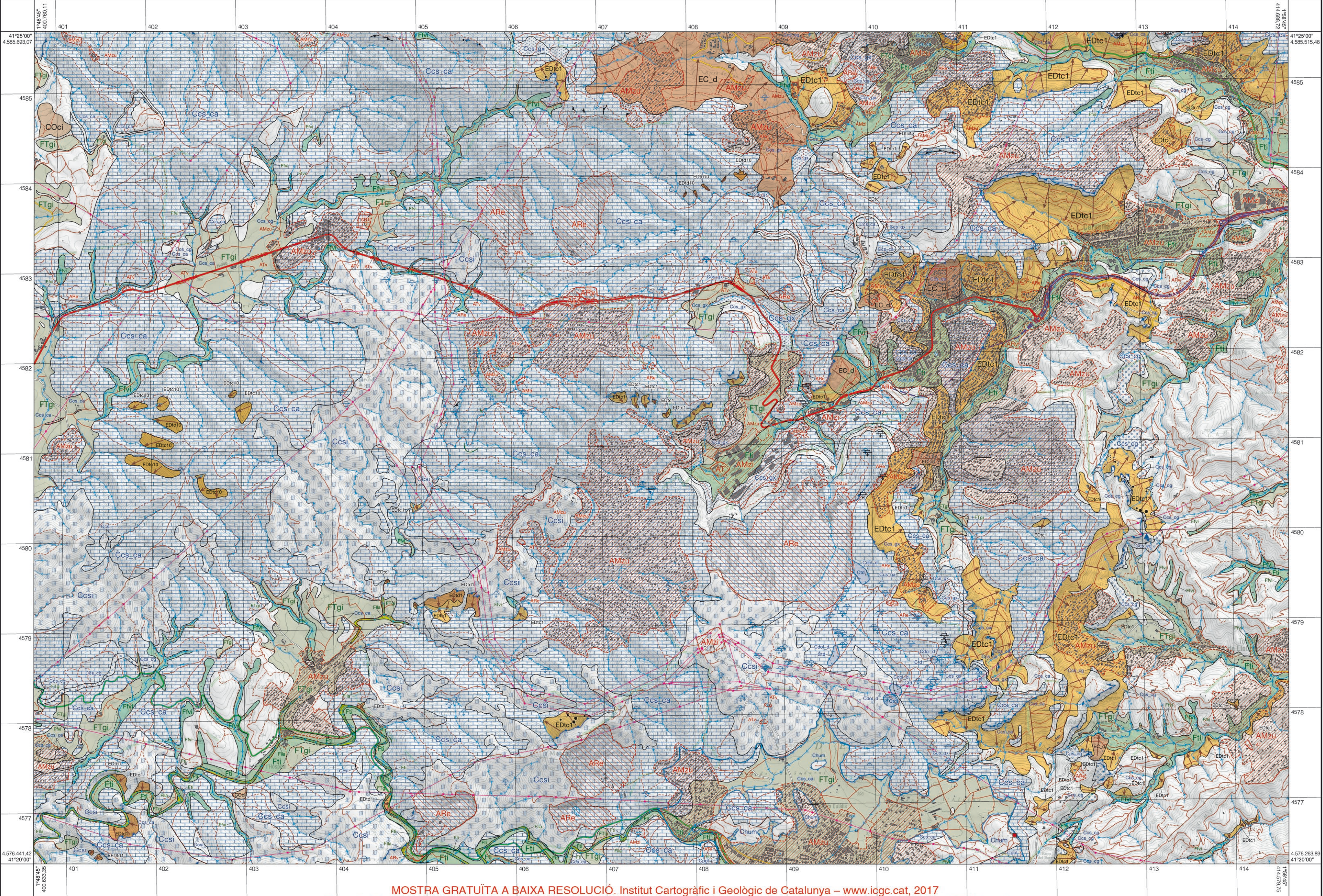
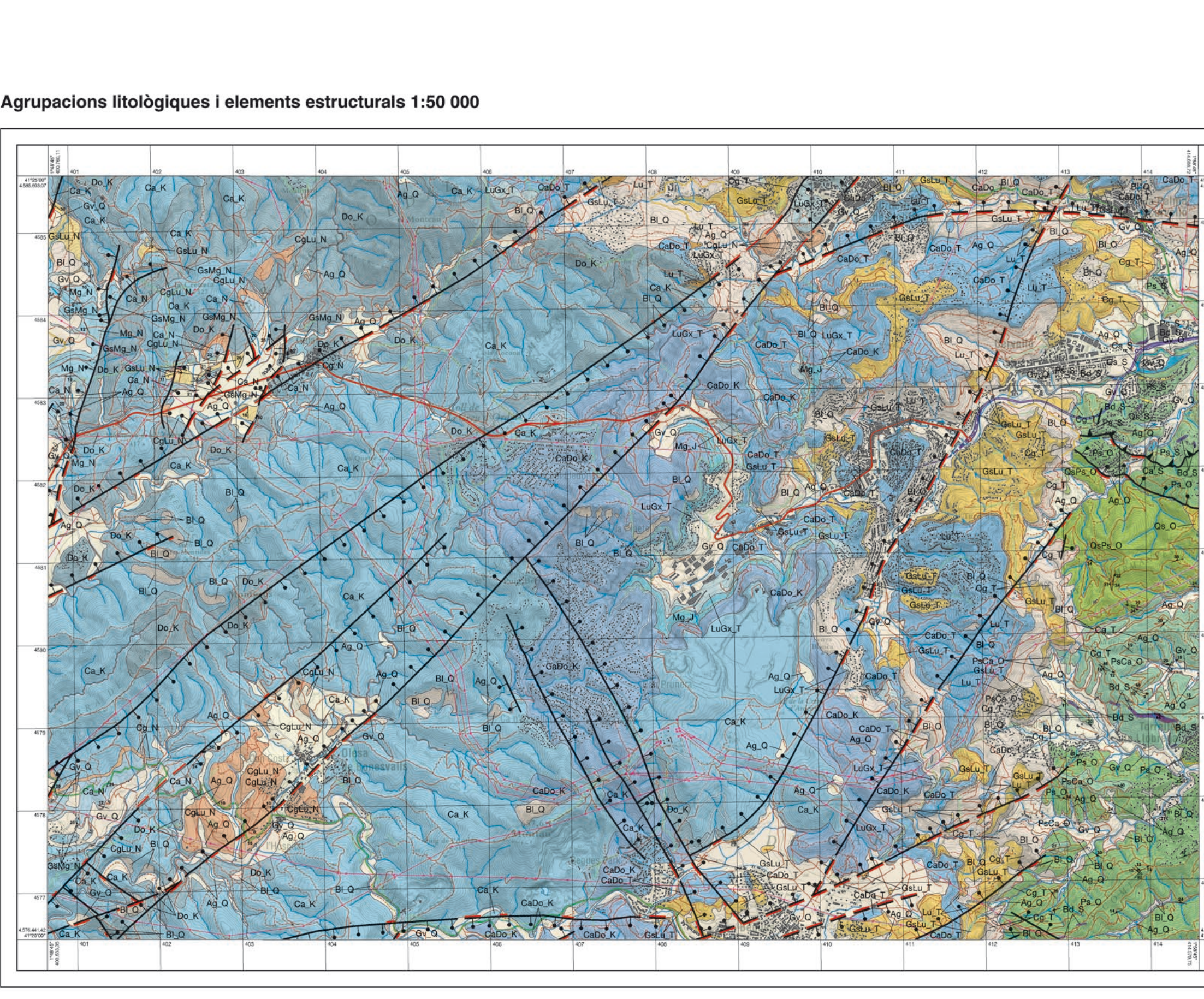


Mapa geològic dels processos actius i recents i de l'activitat antròpica. Geoantròpic 1:25 000



MOSTRA GRATUITA A BAXA RESOLUCIÓ. Institut Cartogràfic i Geològic de Catalunya - www.icgc.cat, 2017. Fitxer digital georeferenciat GeoPDF en Sistema Geodèsic de Referència ETRS89 (el·lipsoide GRS80). Projecció cartogràfica UTM31 nord.

Aggregacions litològiques i elements estructurals 1:50 000



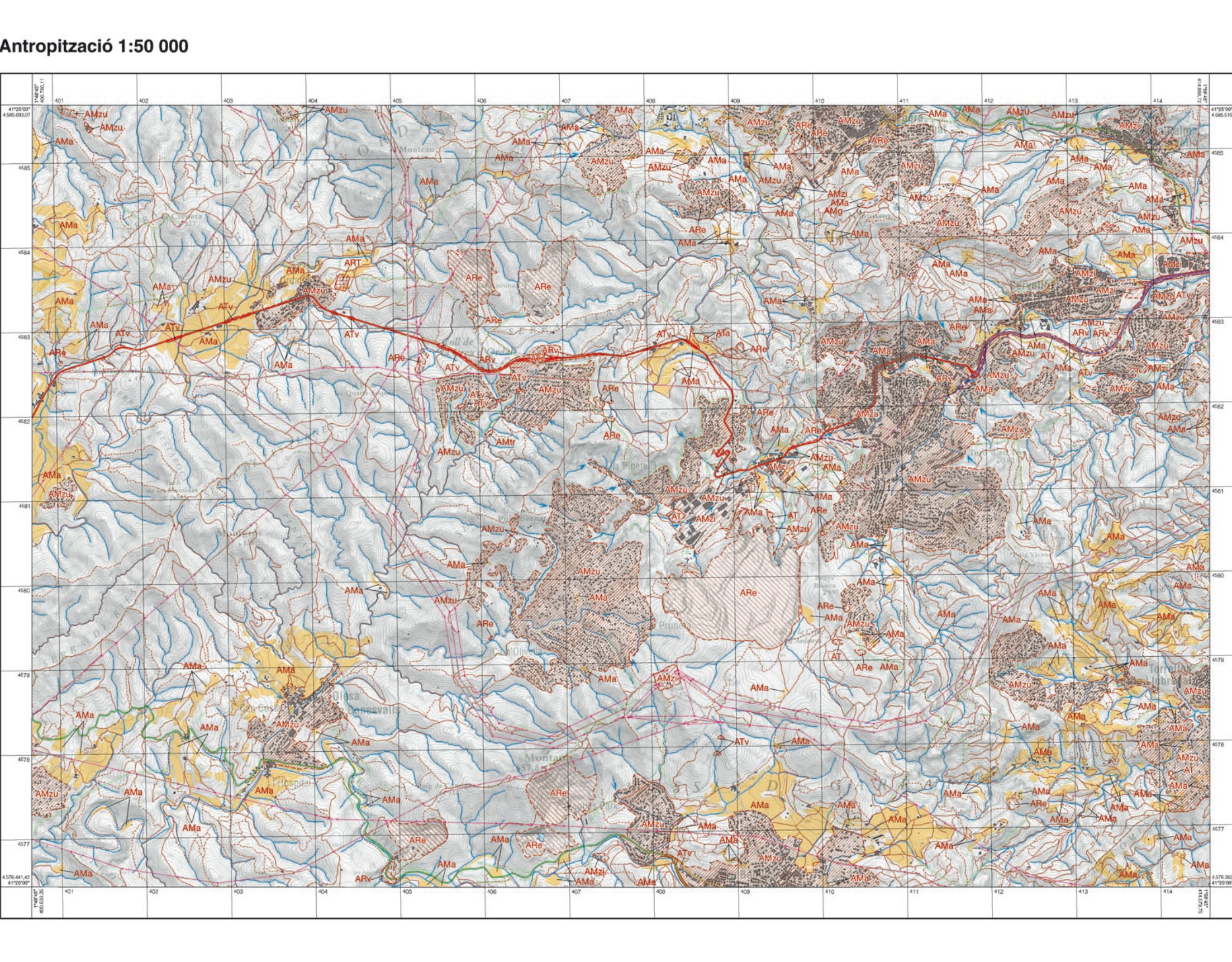
Legend for lithological and structural map, including sections for Sediments, Rocks, and Structural Elements.

Legend for anthropogenic activity, including sections for Anthropogenic Activity, Processes, and Signs.

Legend for dynamic movements, including sections for Dynamic Movements, Dynamic Characteristics, and Signs.

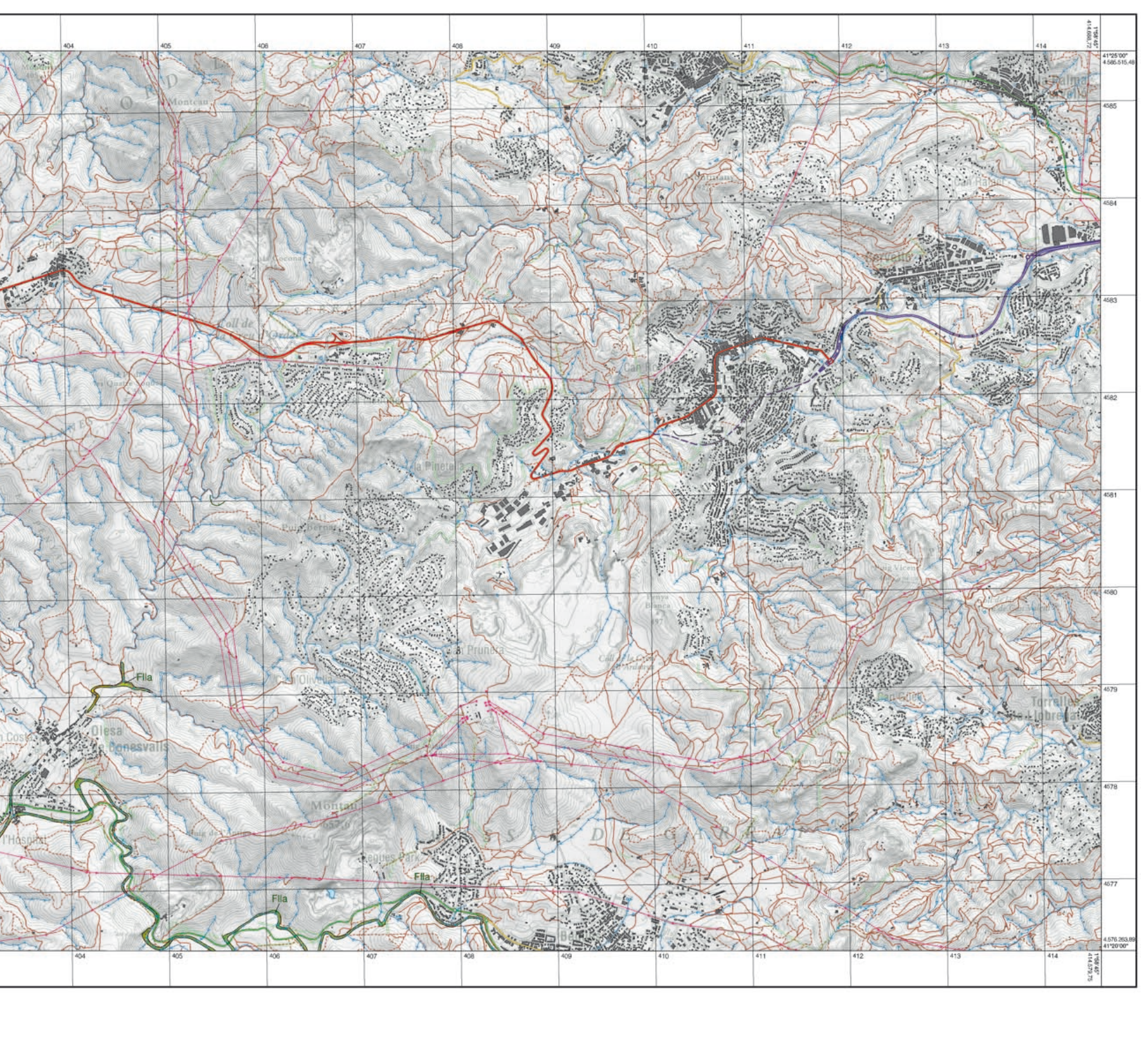
Map of Vallirana 420-1-2 (71-32) at 1:25,000 scale, showing geological features and scale.

Mapa geològic dels processos actius i recents i de l'activitat antròpica. Geoantròpic 1:25 000



Legend for anthropogenic activity, including sections for Anthropogenic Activity, Processes, and Signs.

Dinàmica fluvial, fluvial-al·luvial i fluvioestruccional. Àrees funcionals 1:50 000



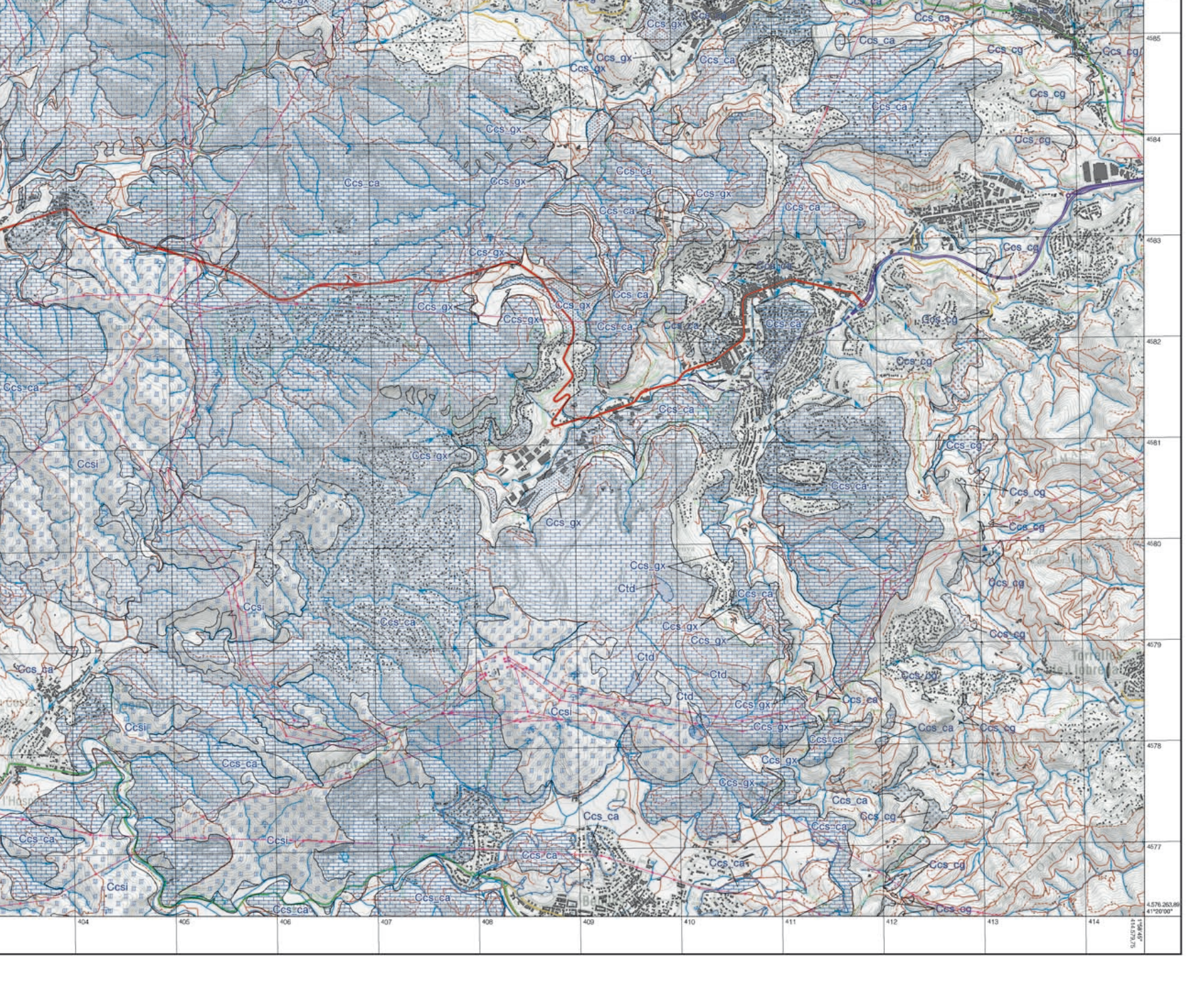
Legend for fluvial dynamics, including sections for Fluvial Dynamics and Signs.

Dinàmica dels moviments de vessant. Àrees funcionals 1:50 000



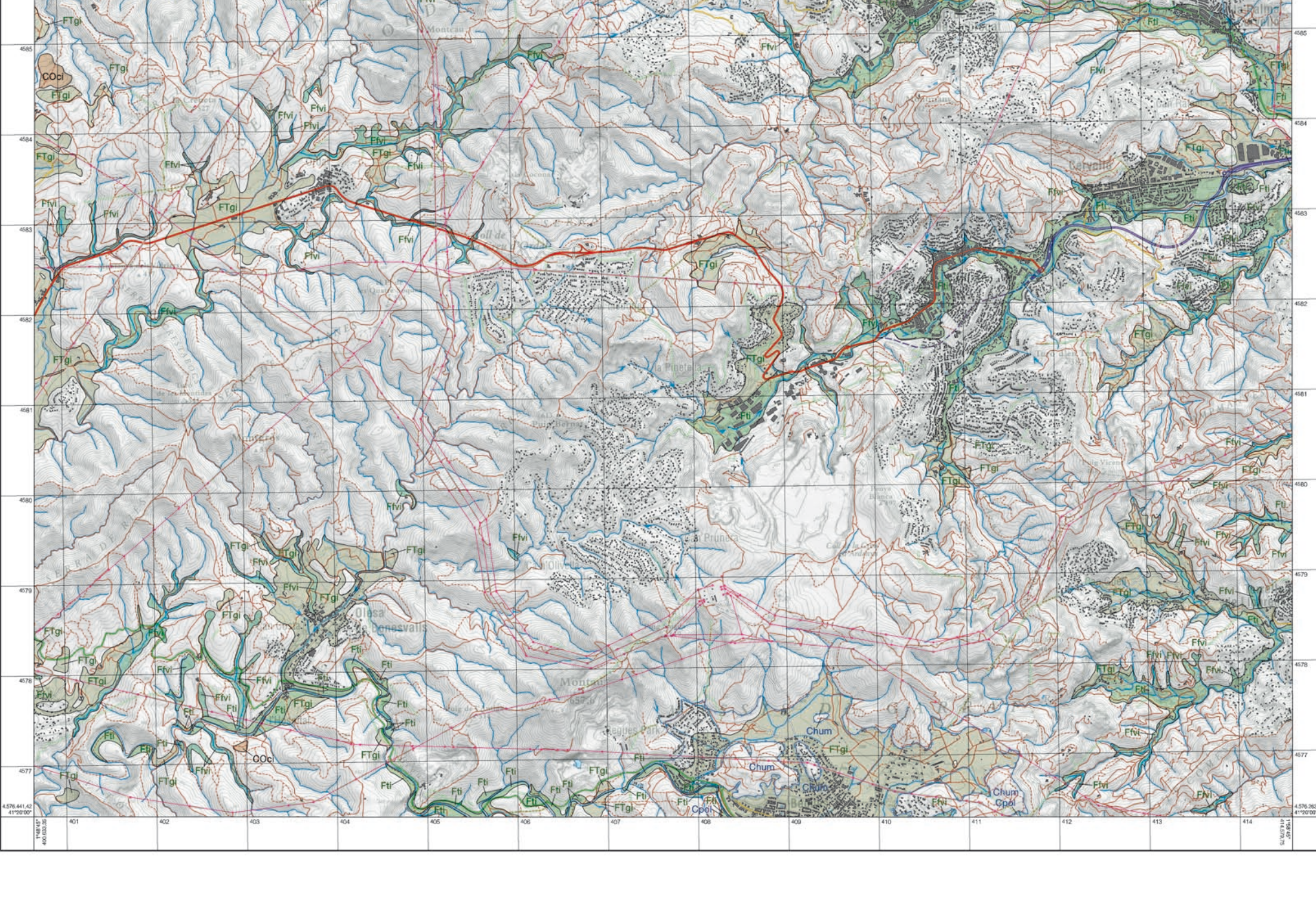
Legend for slope dynamics, including sections for Slope Dynamics and Signs.

Dinàmica càrstica. Àrees funcionals 1:50 000

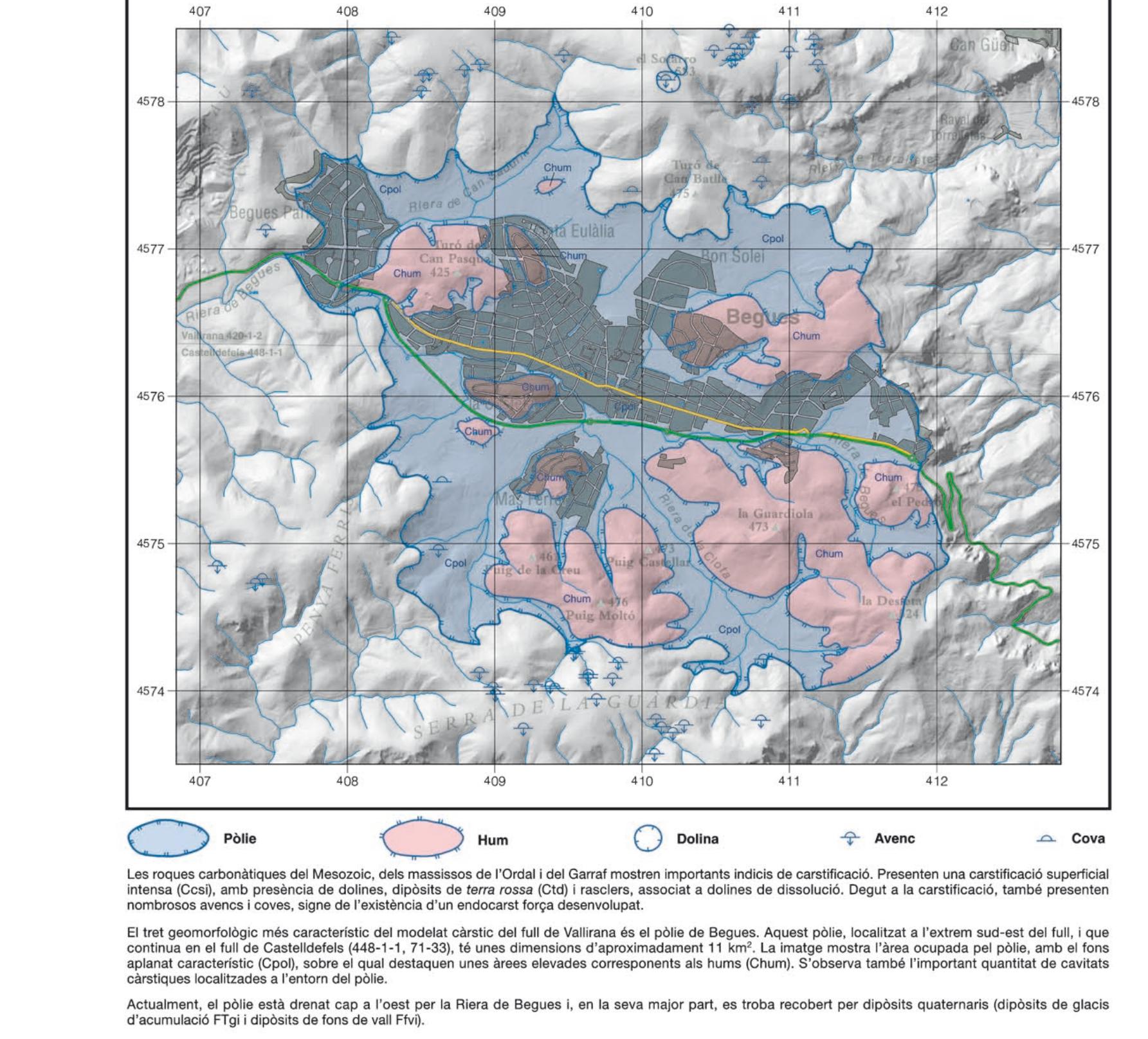


Legend for karst dynamics, including sections for Karst Dynamics and Signs.

Dipòsits de processos inactius i relíctes 1:50 000



Legend for inactive deposits, including sections for Inactive Deposits and Signs.



Legend for karst features, including sections for Karst Features and Signs.

Textual information regarding the map's purpose, scale, and data sources.