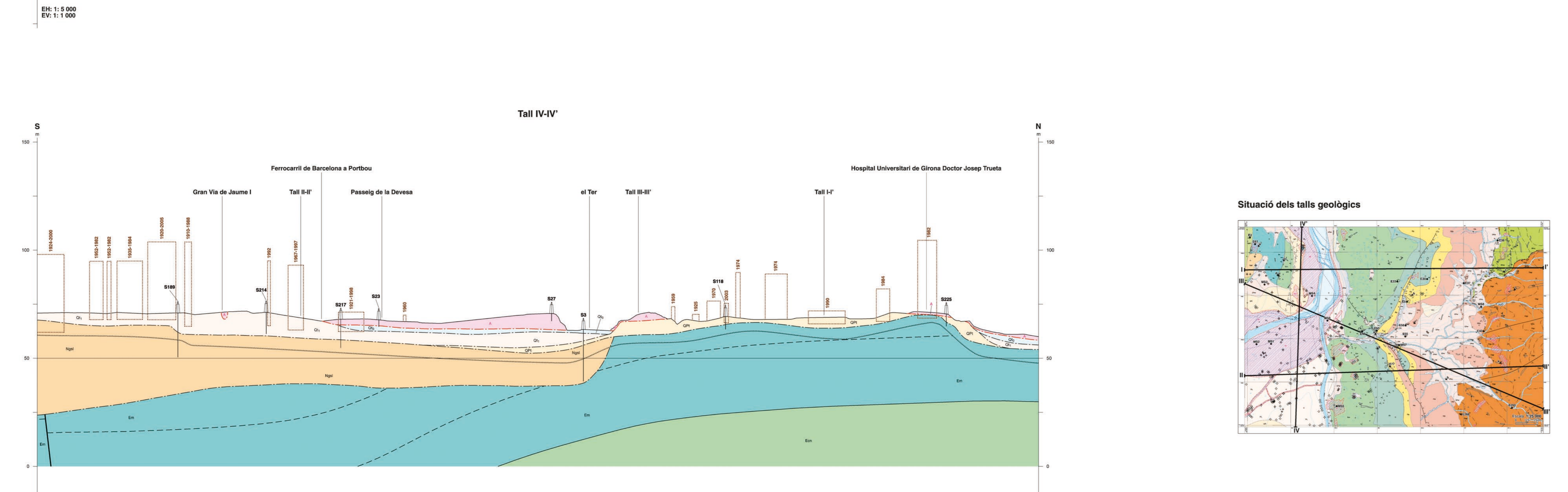
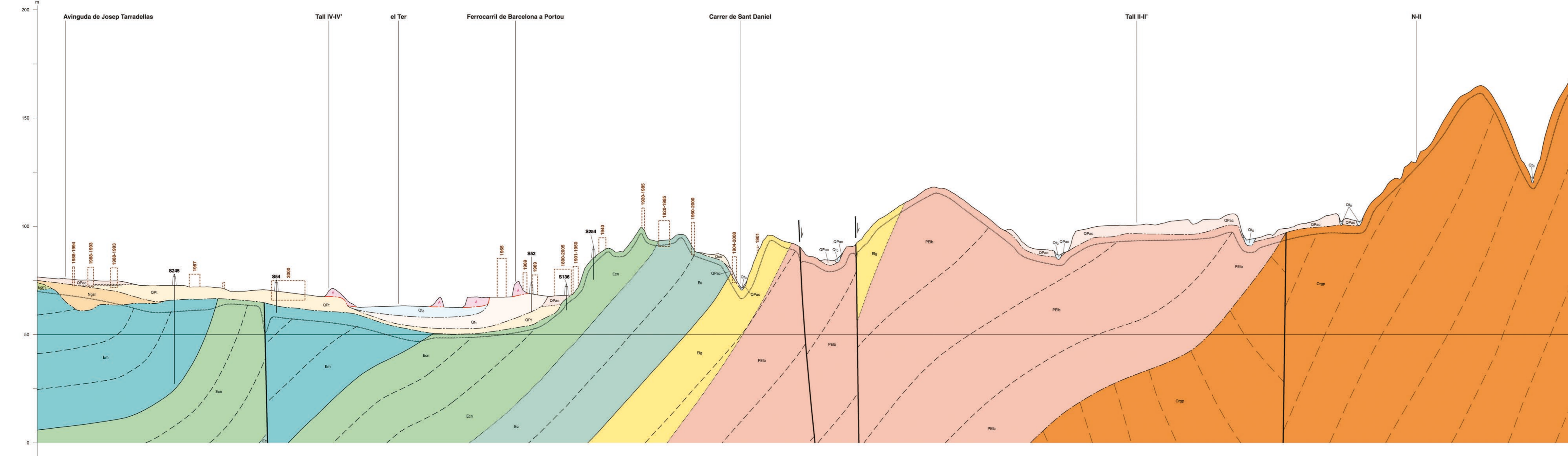
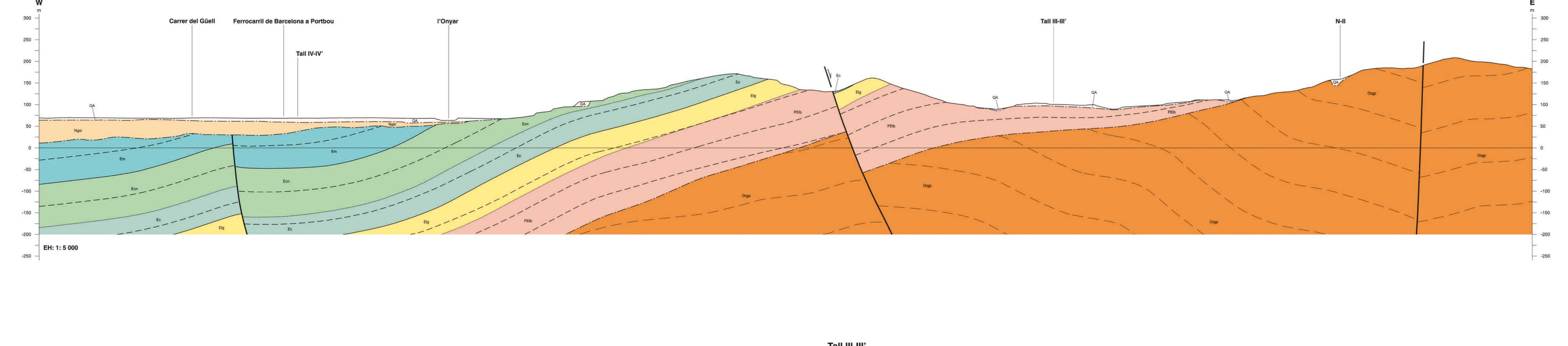
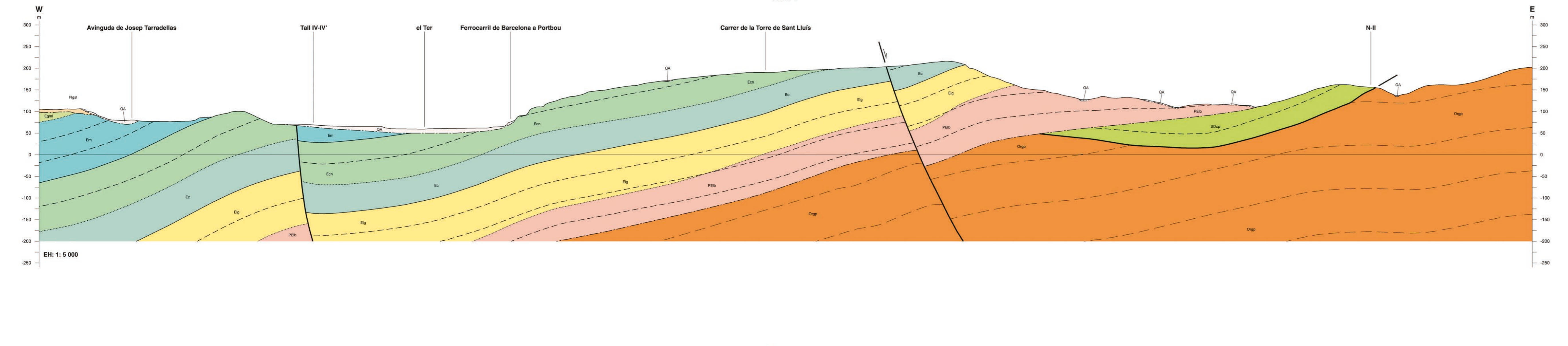
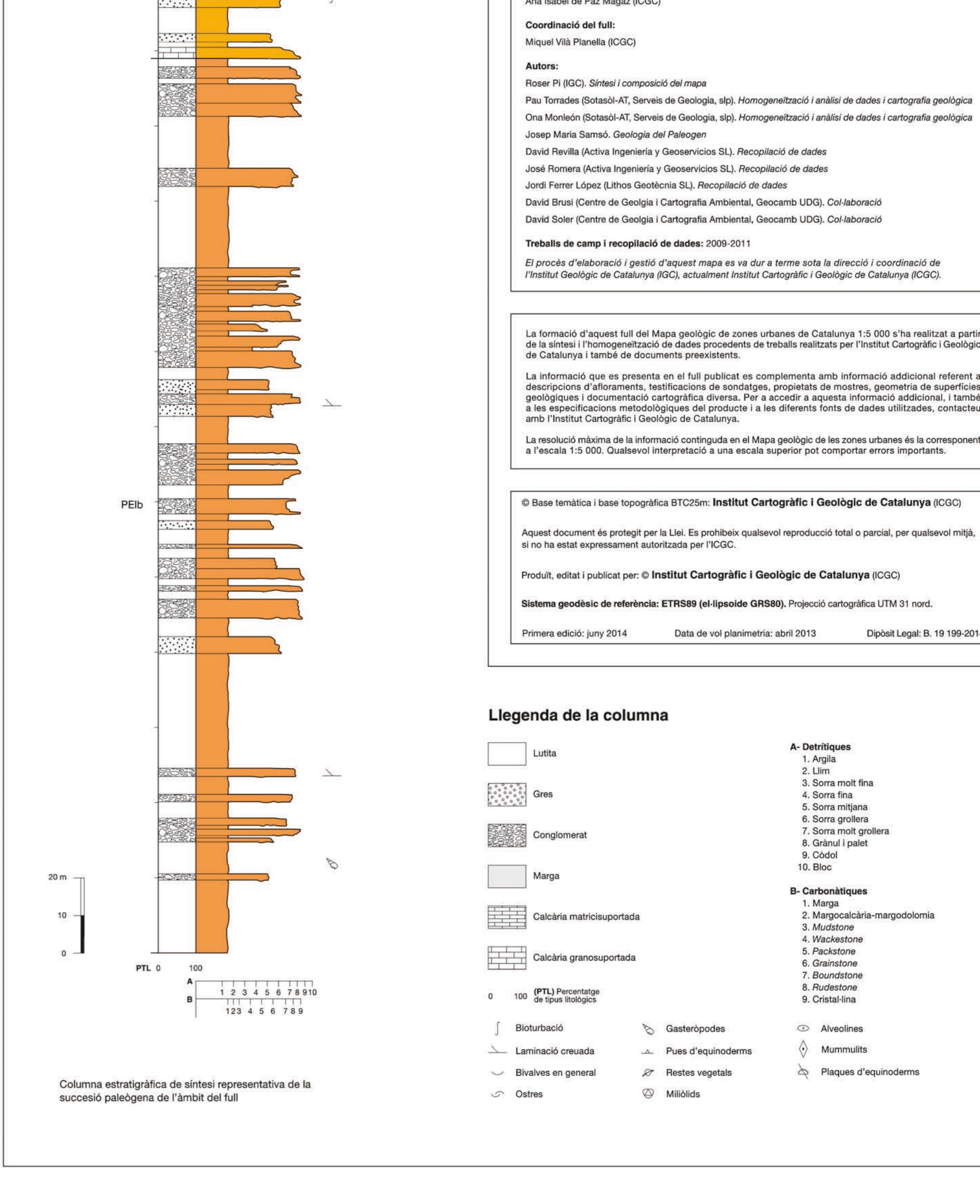
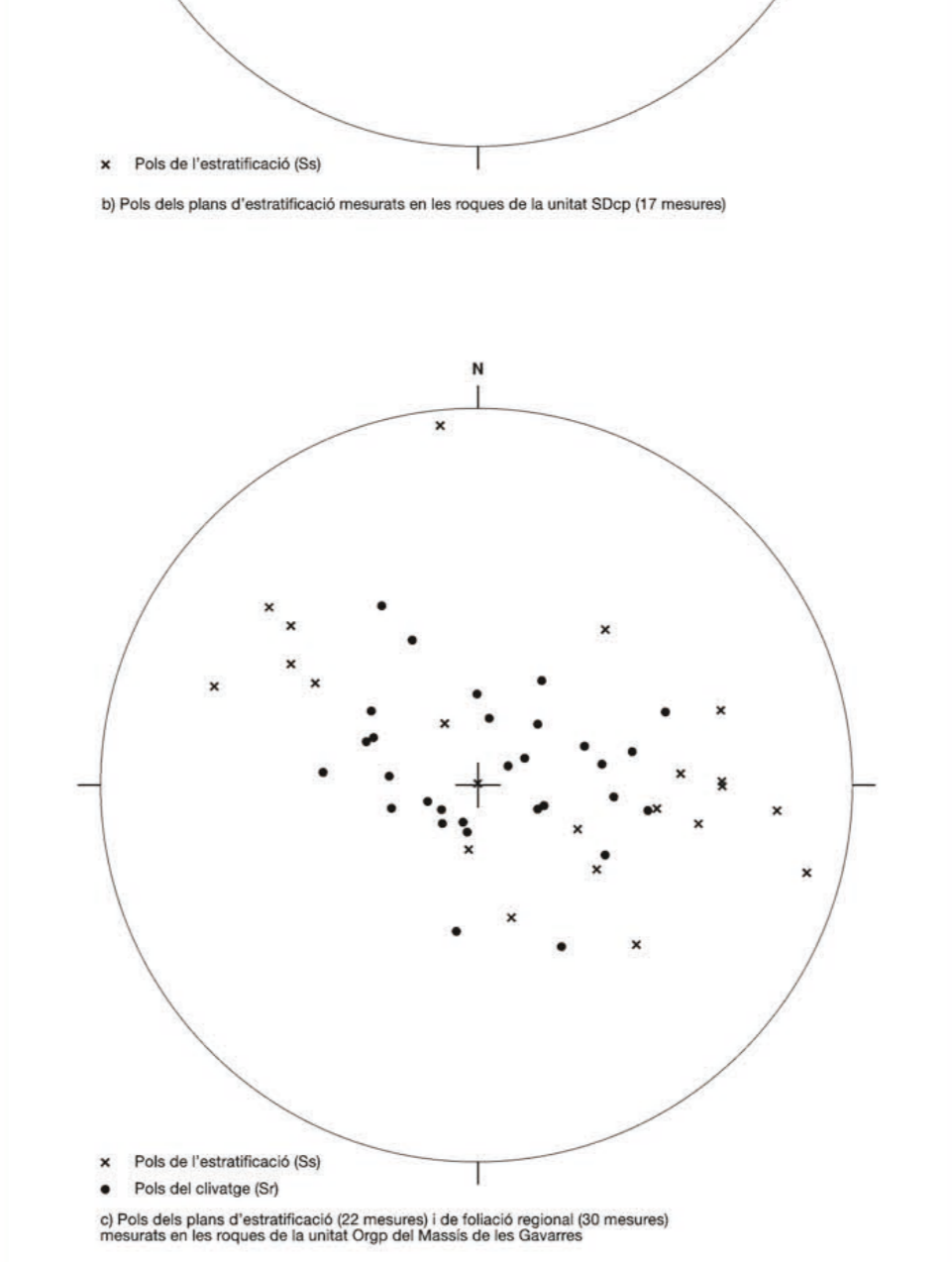
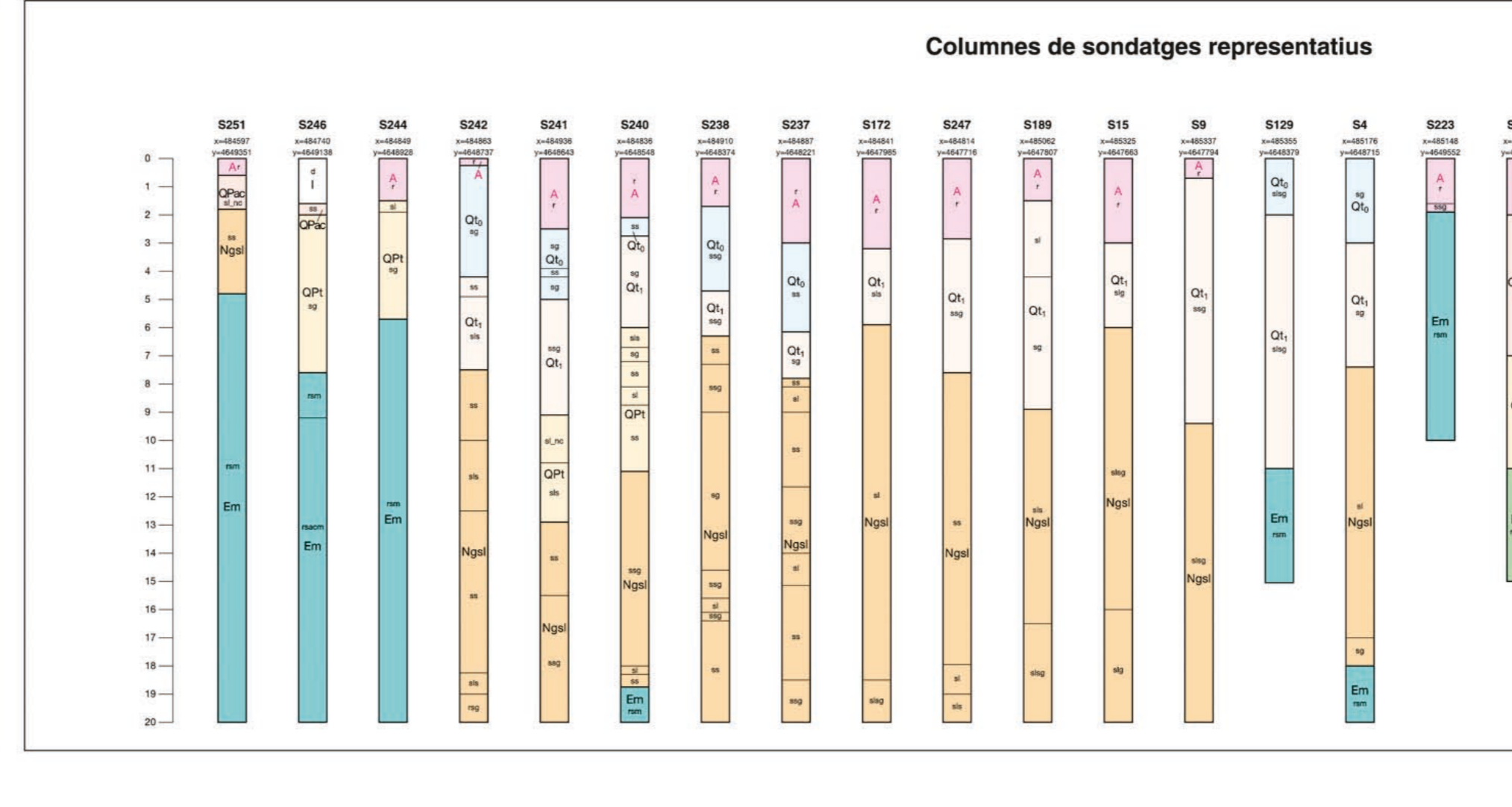
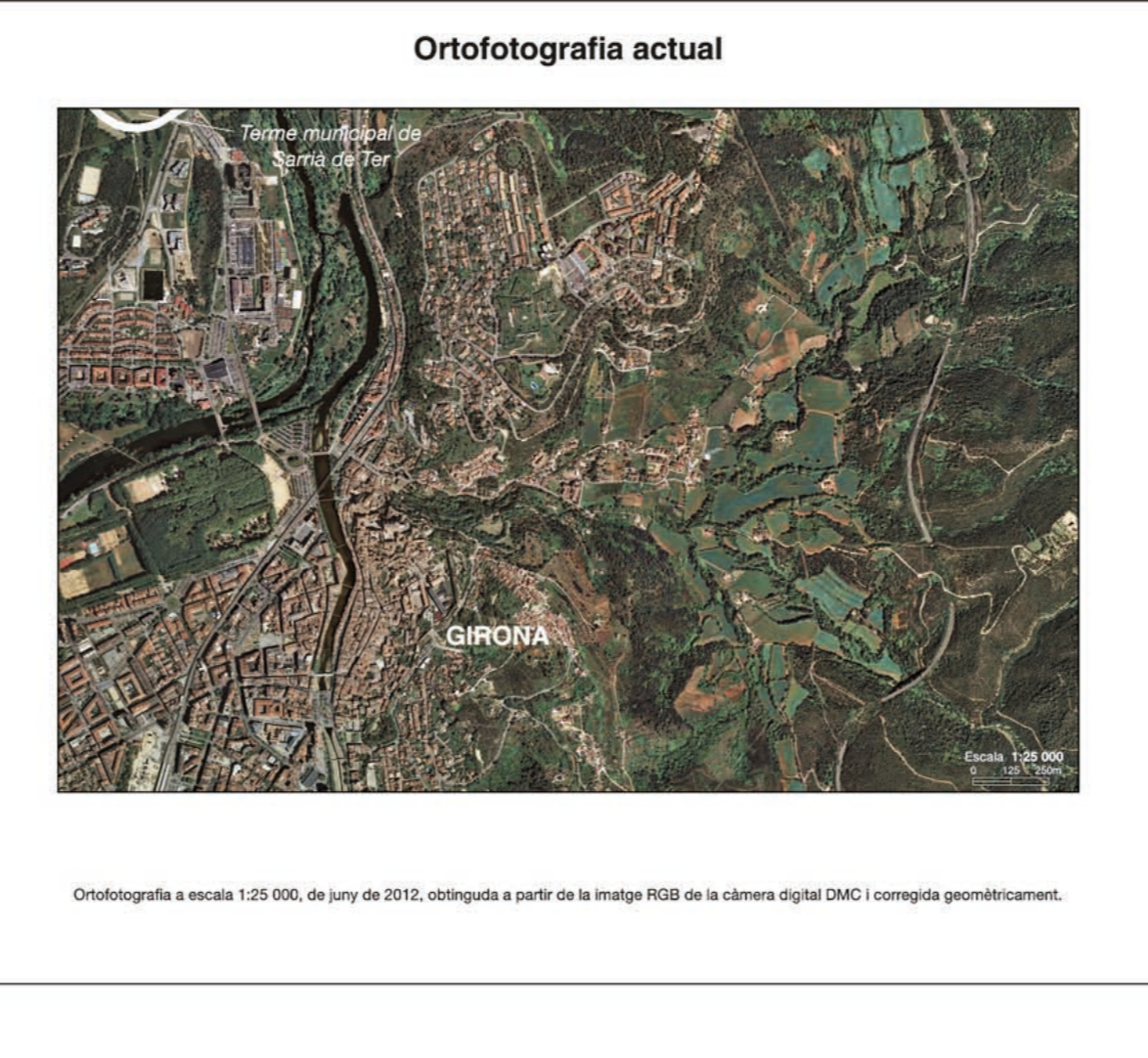
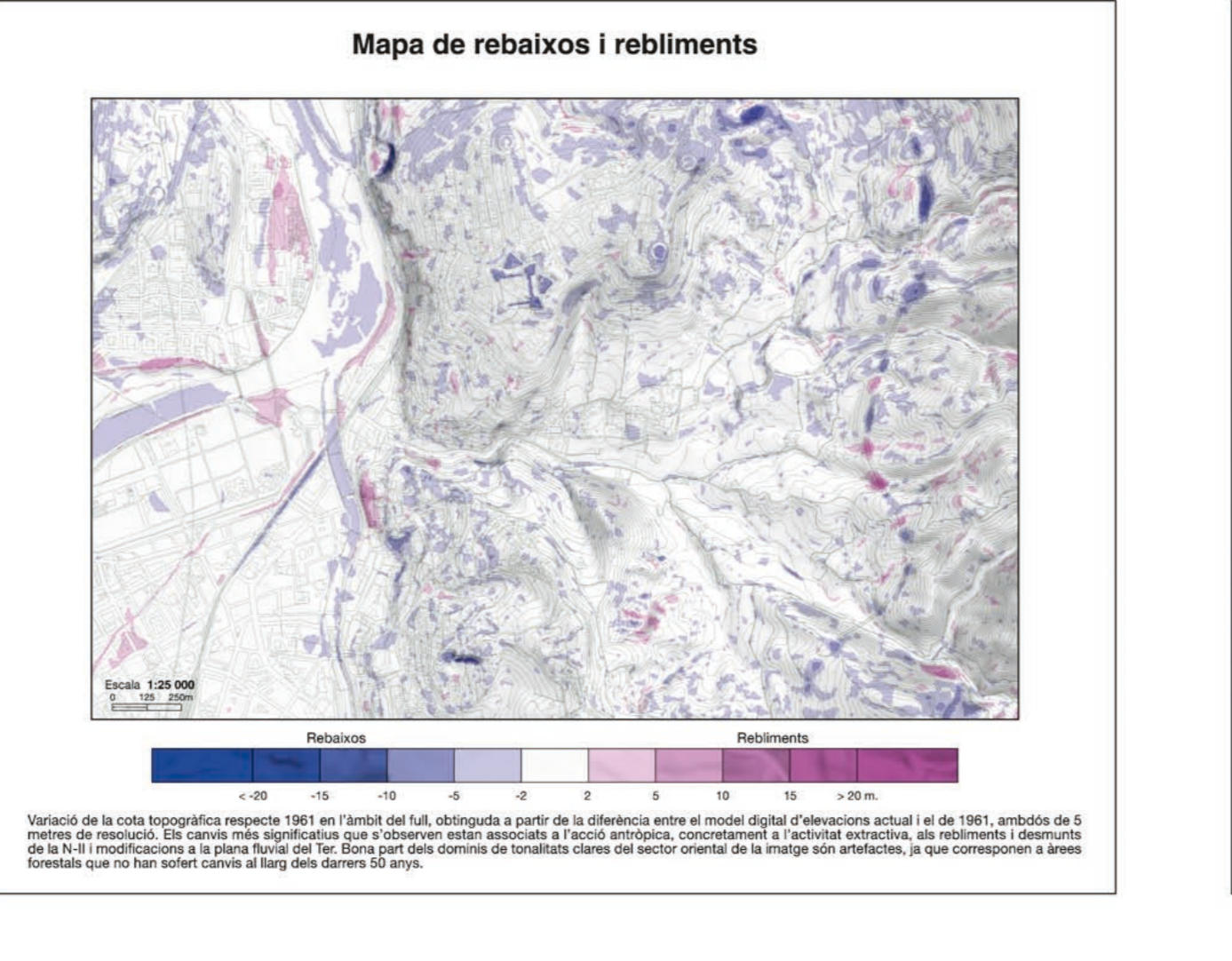
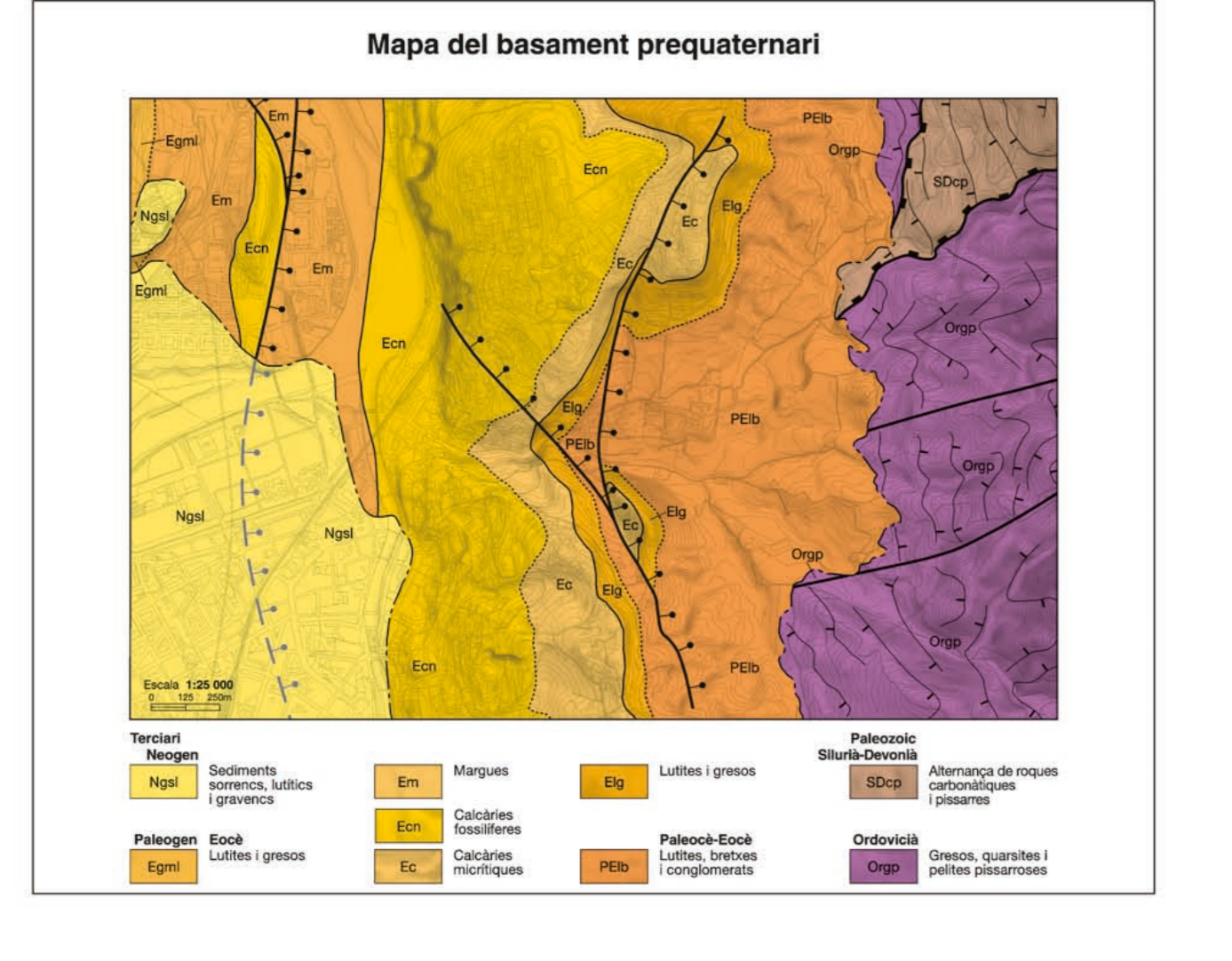
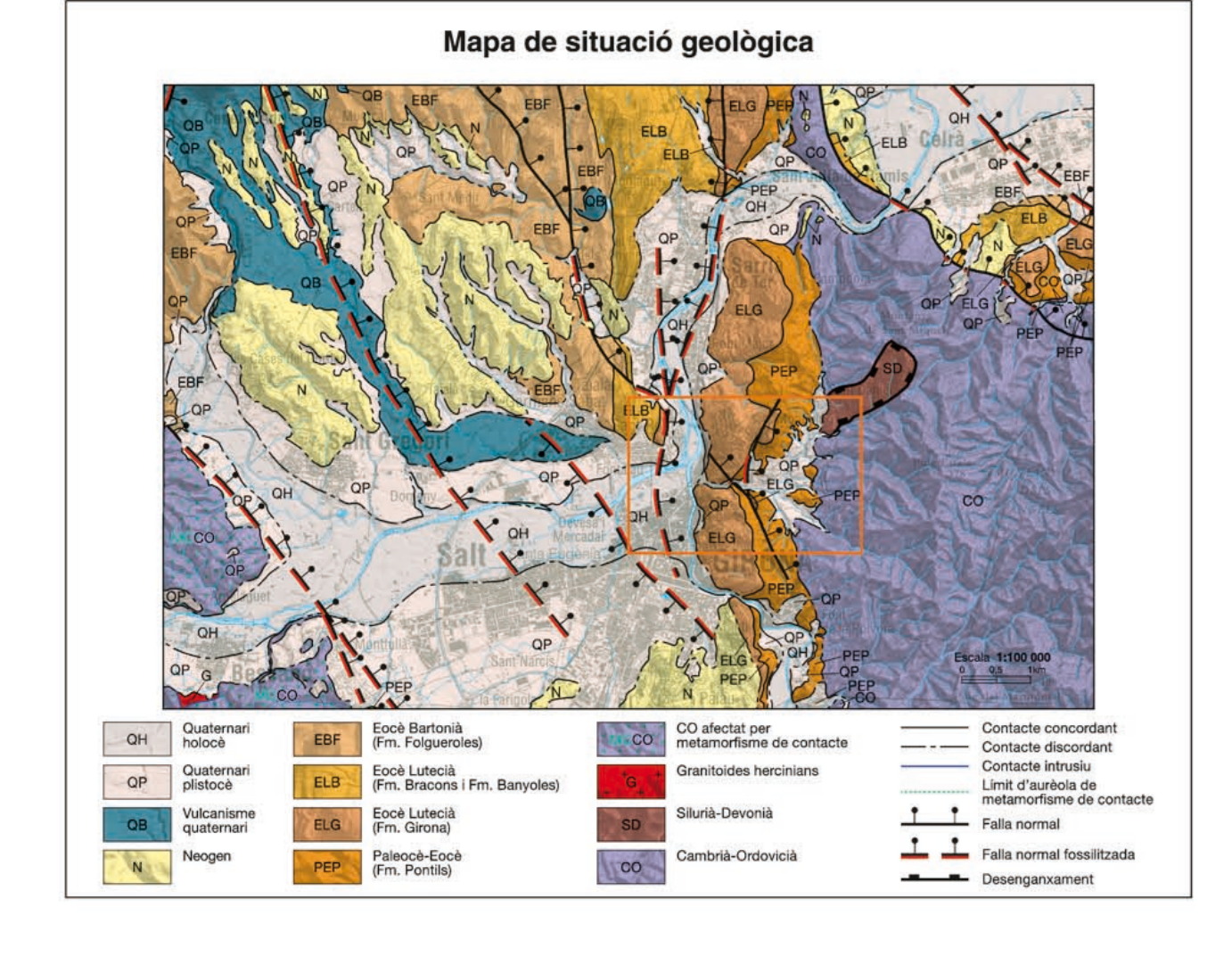
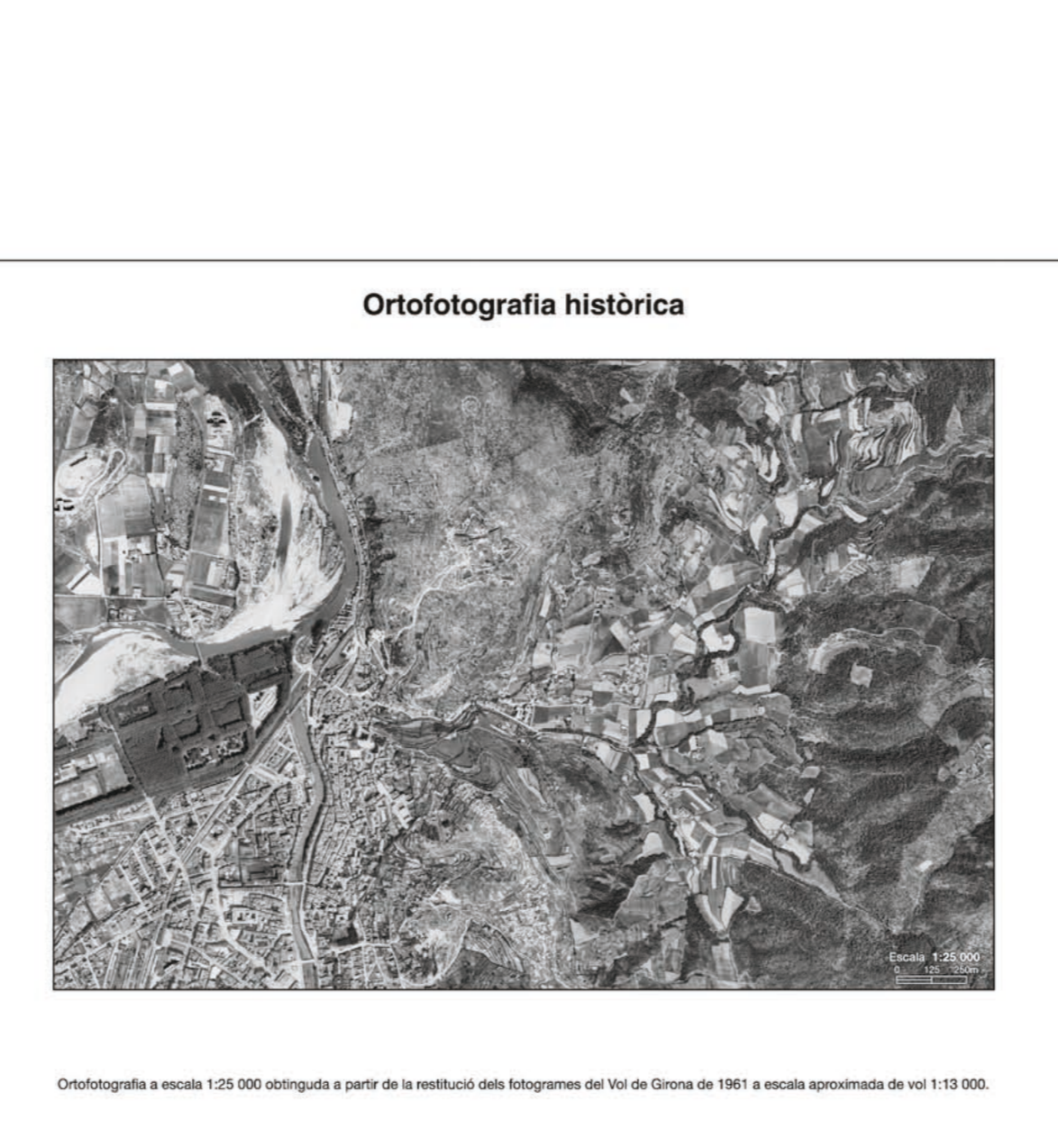
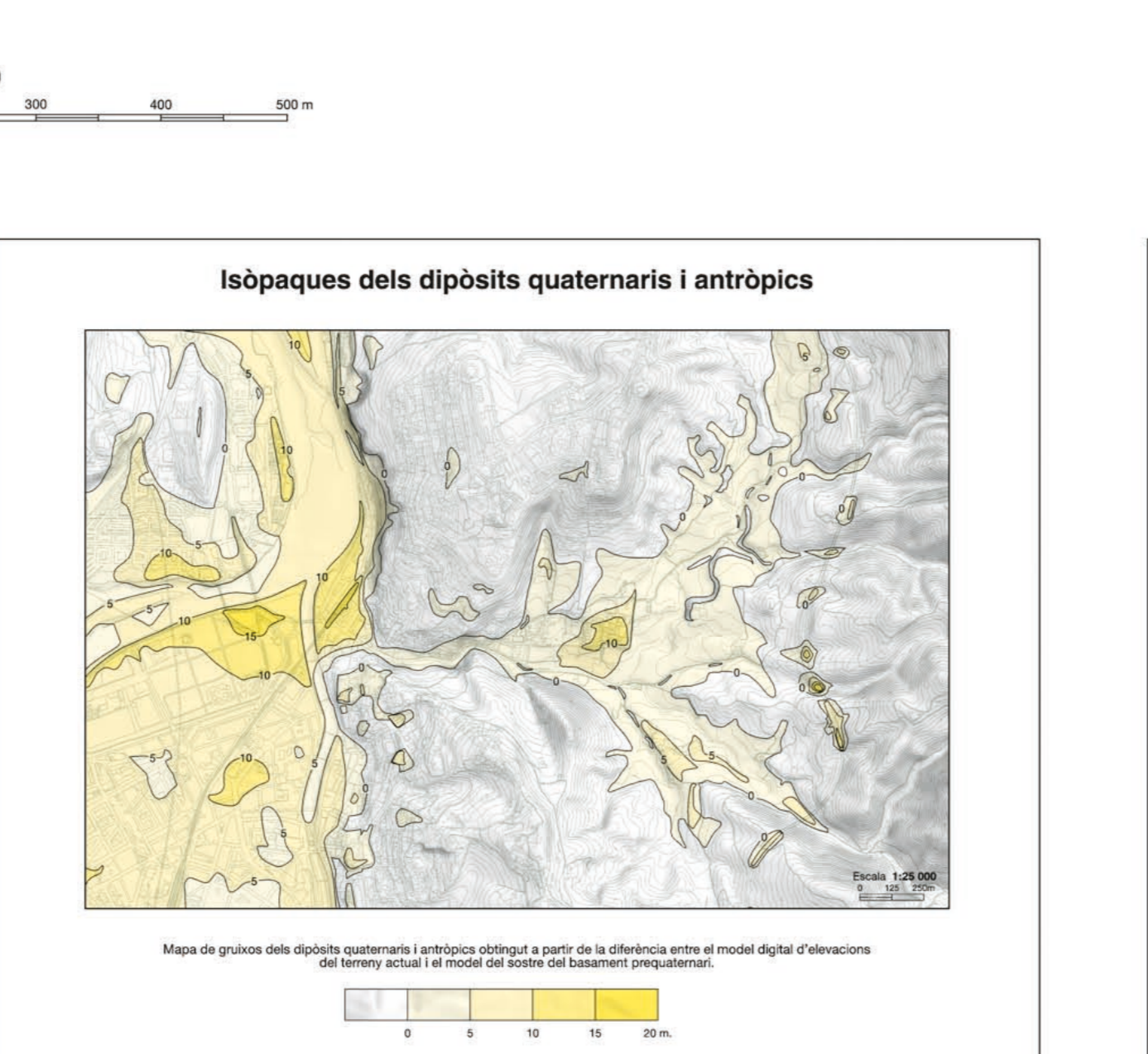
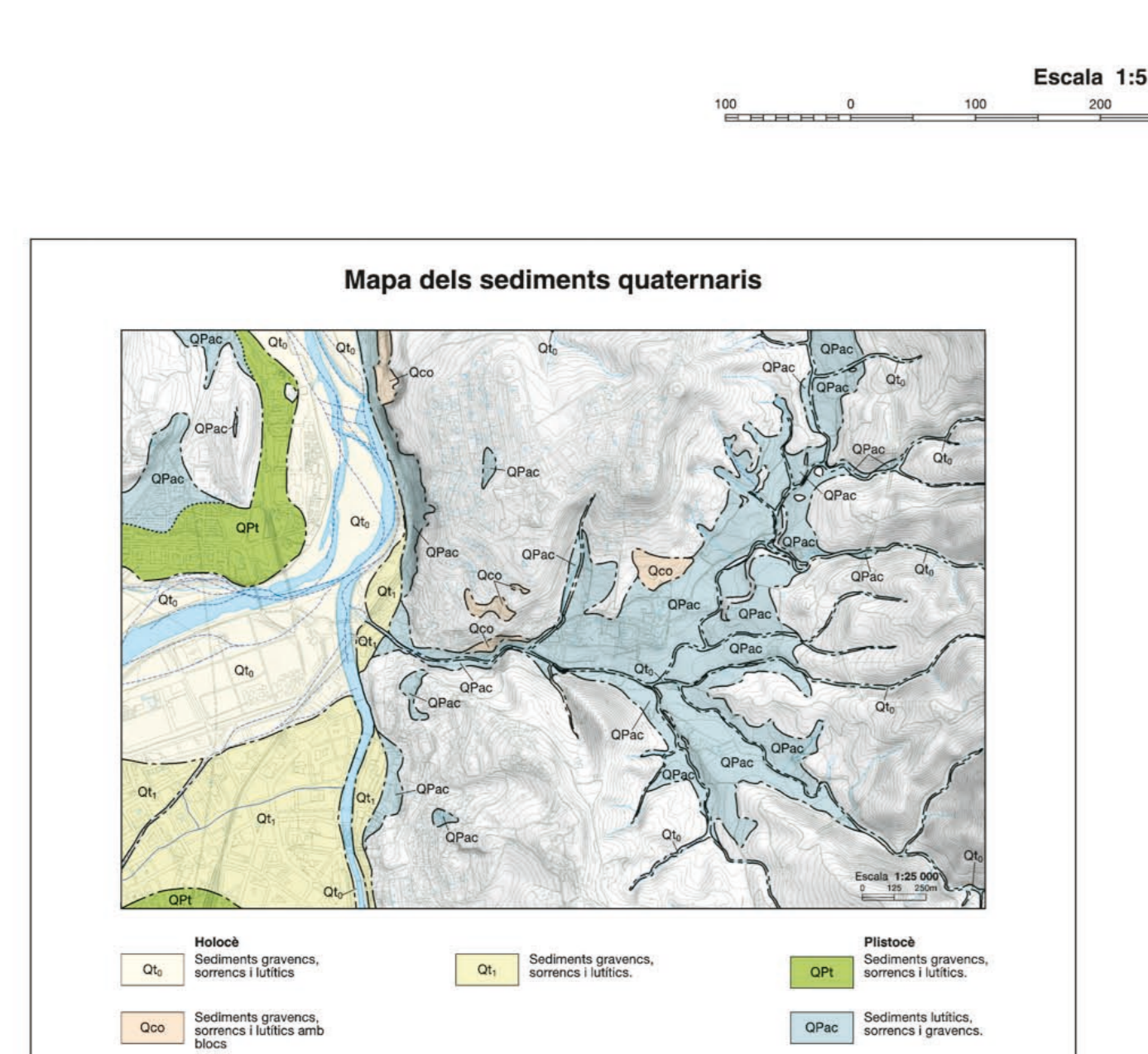
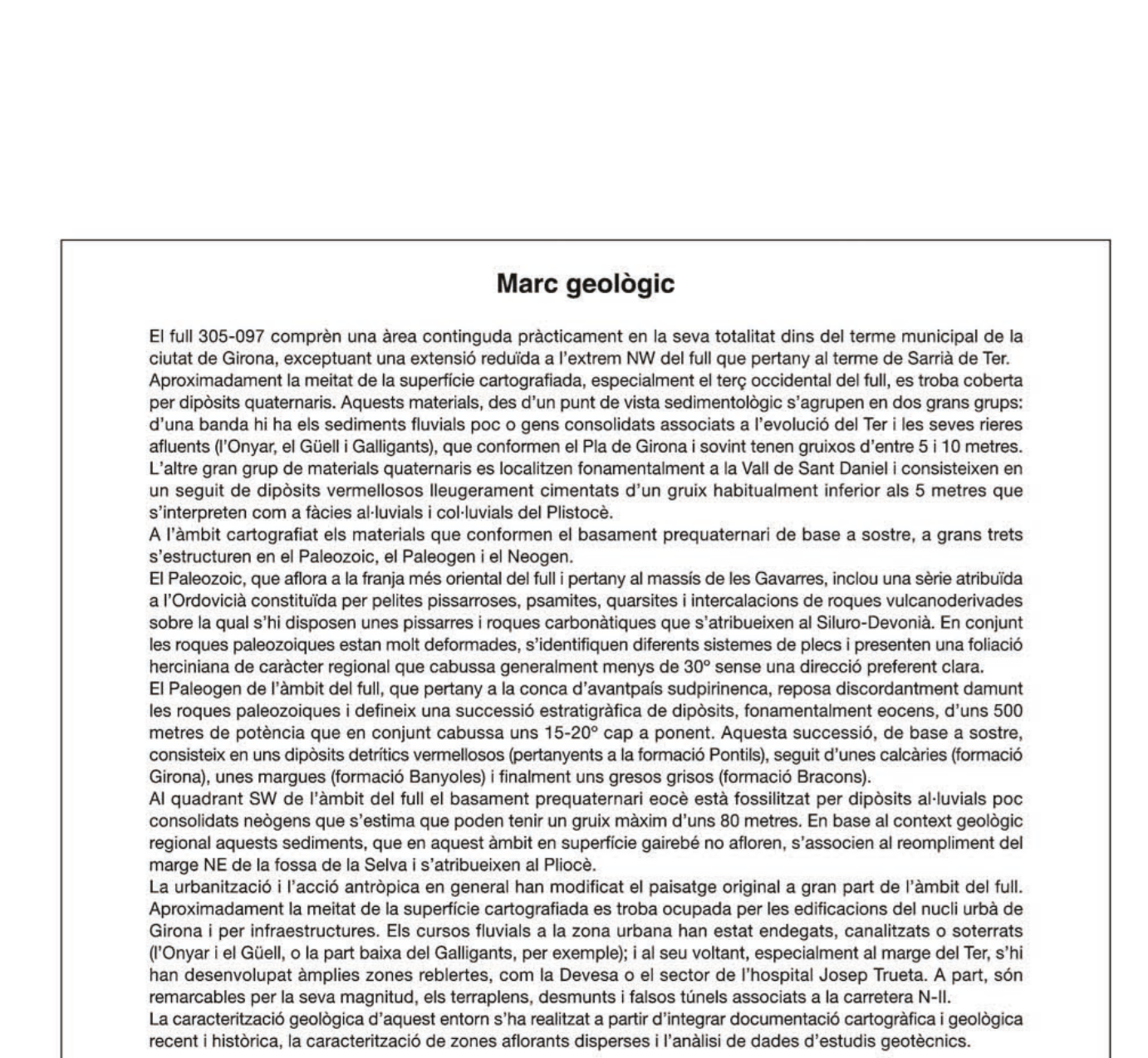
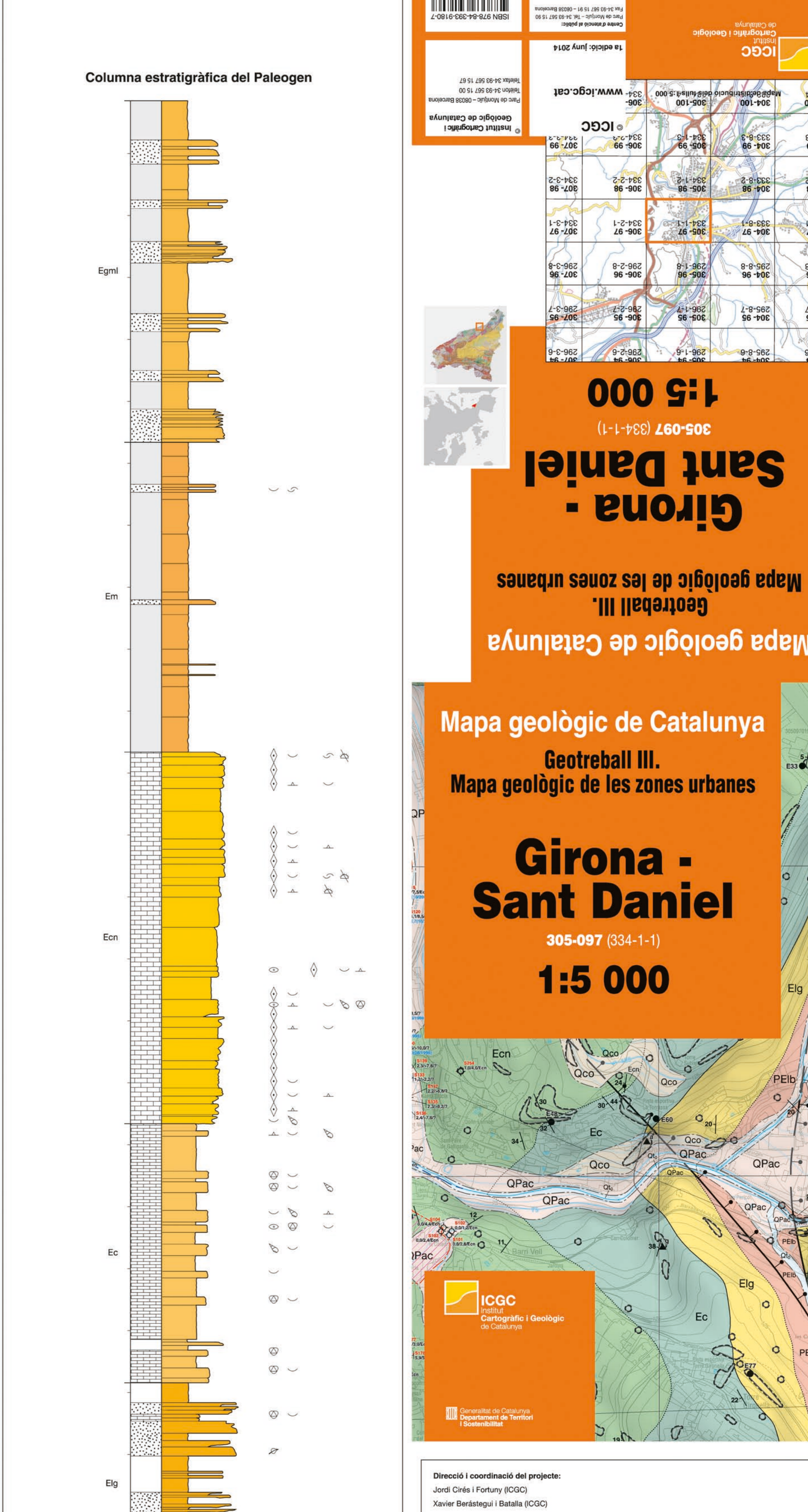


Llegenda: Descripció detallada de les unitats geològiques i els símbols utilitzats a la carta.

Signes convencionals: Símbols estàndard per a característiques geològiques com ara dipòsits i estratígrafes.



Taula de composicions geoquímiques de mostres representatives: Taula amb dades de composició geoquímica de mostres representatives de diferents punts de la zona.

