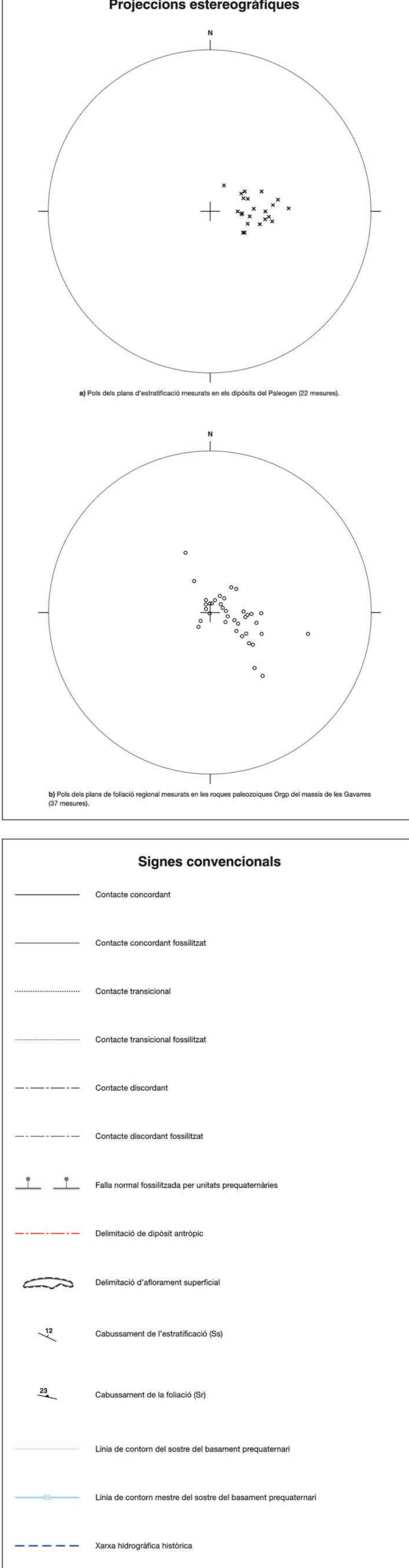
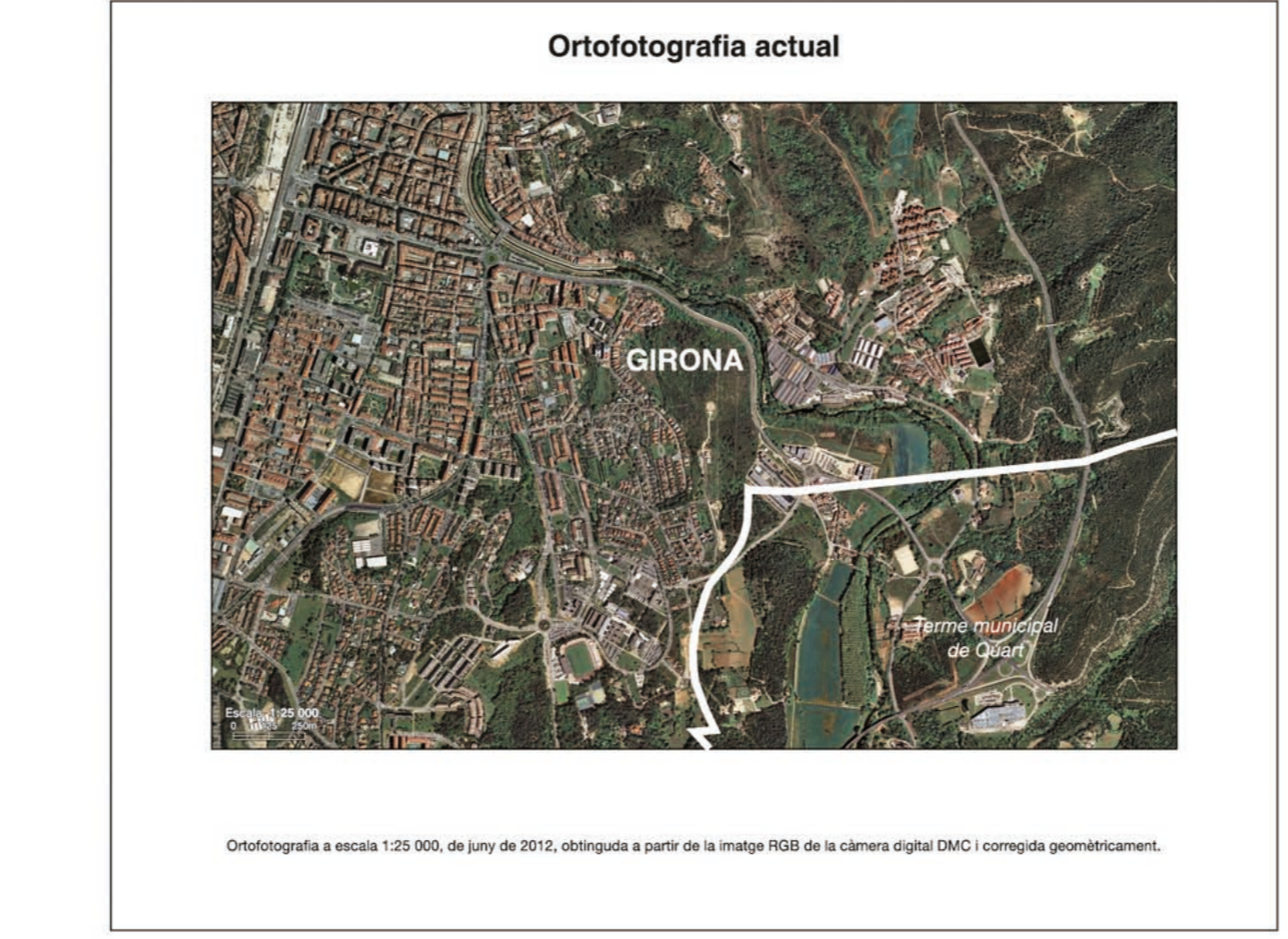
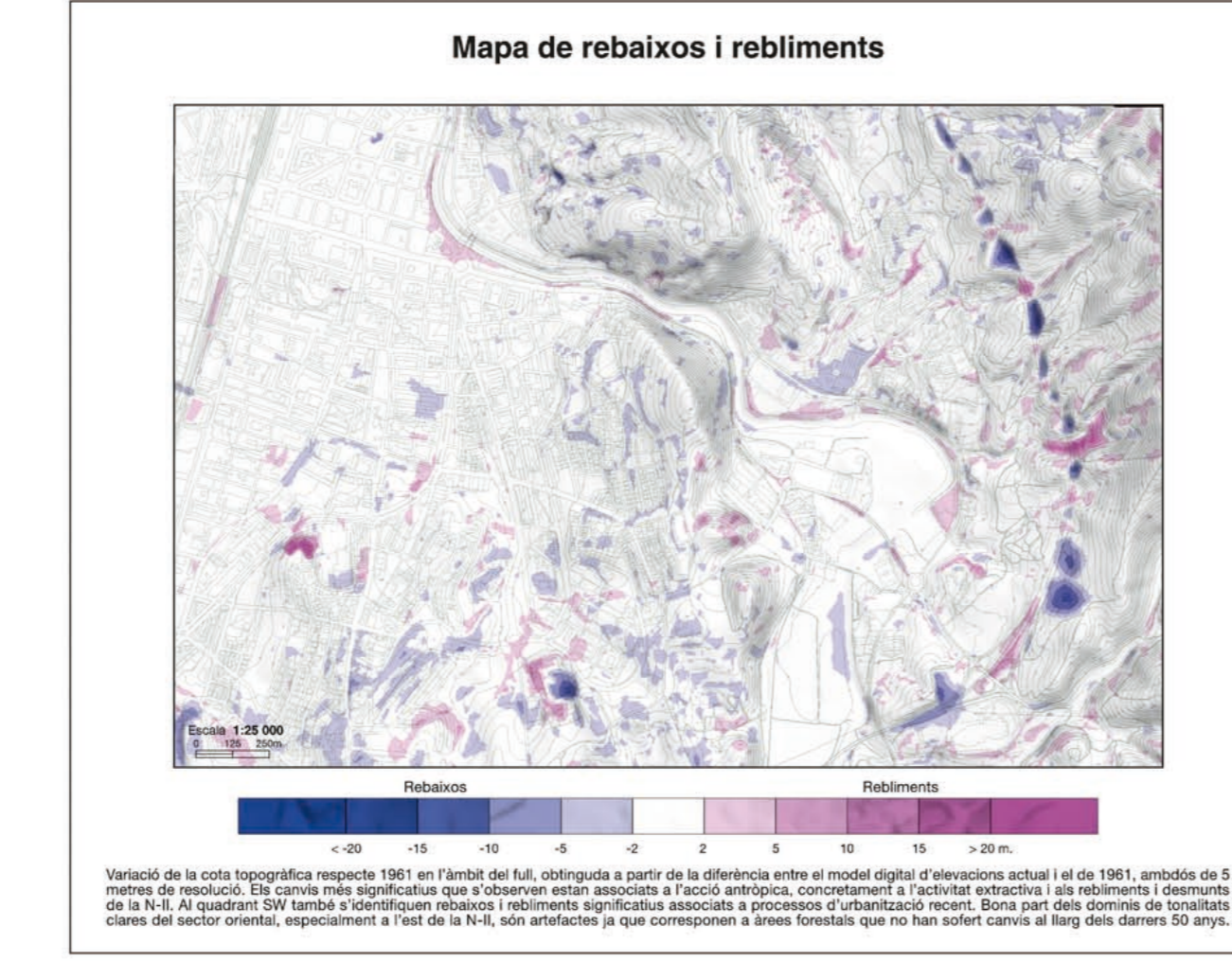
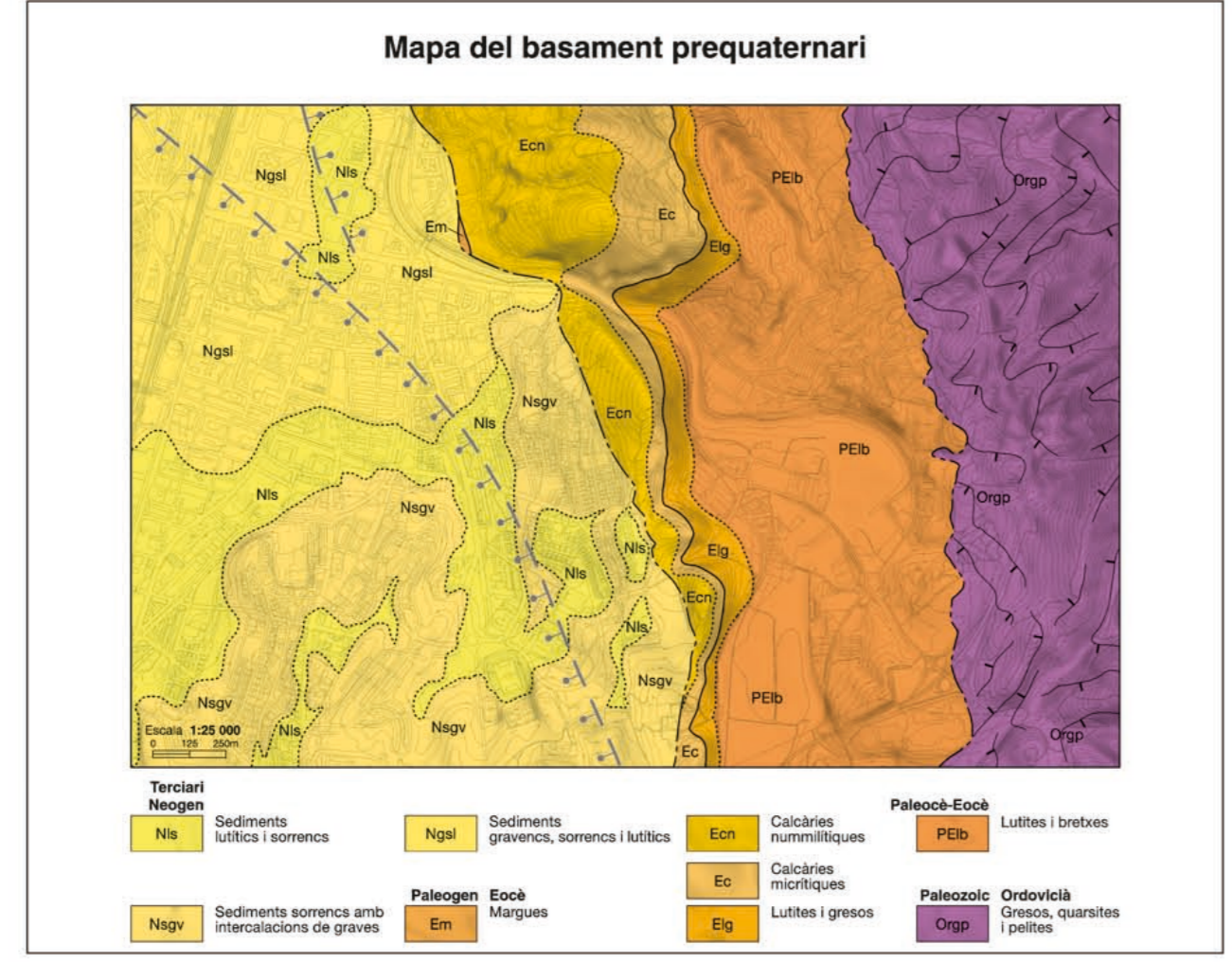
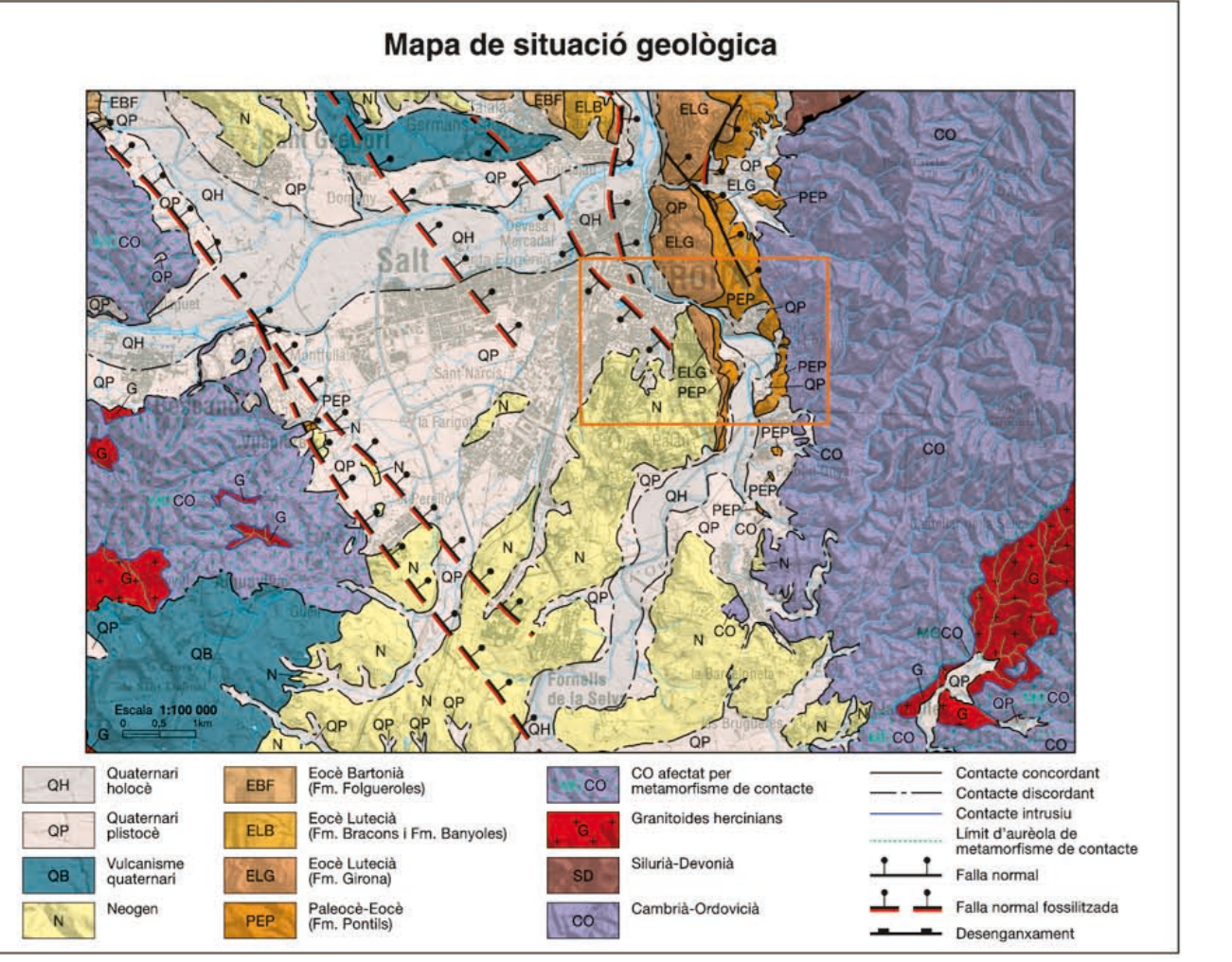
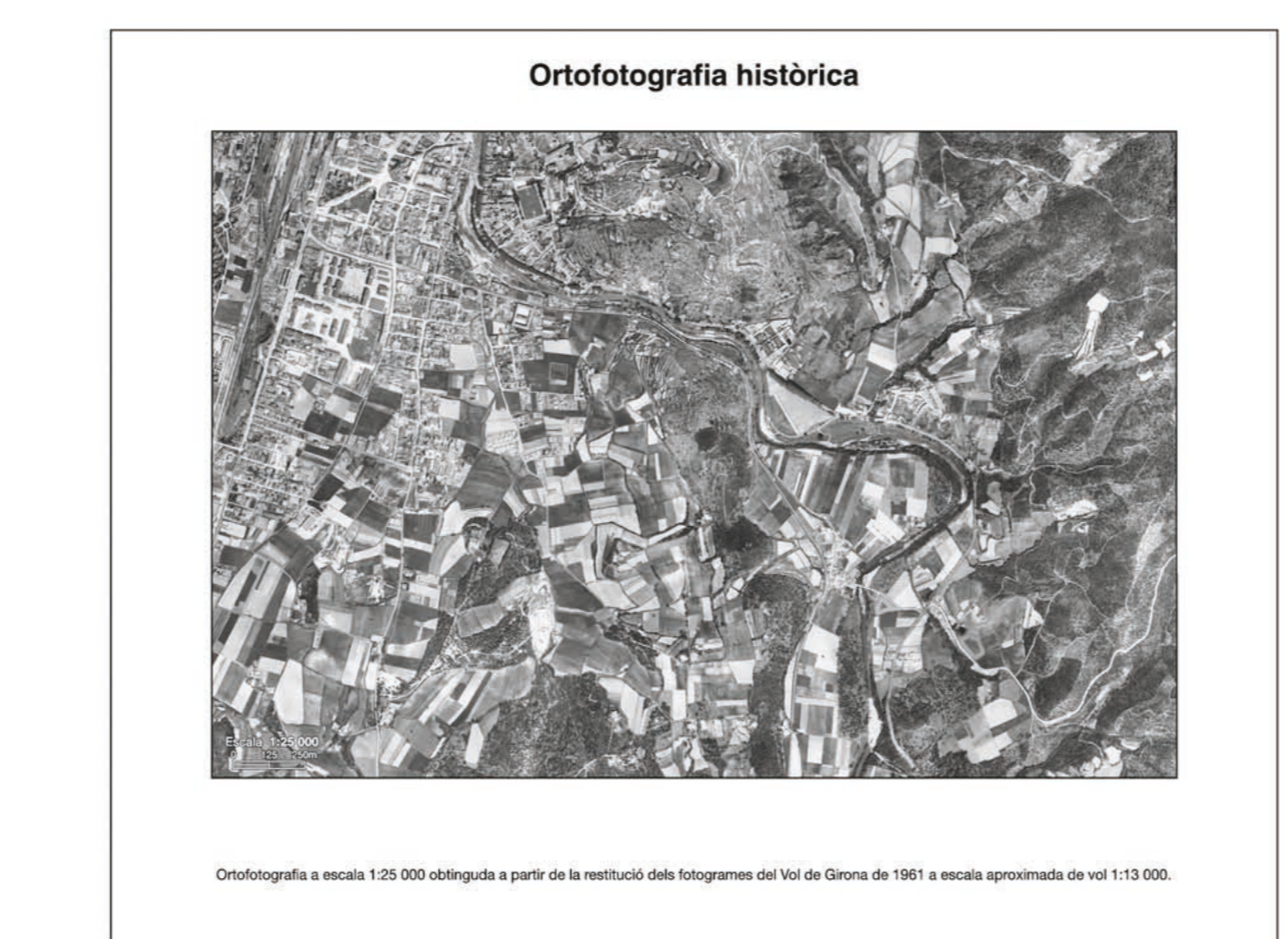
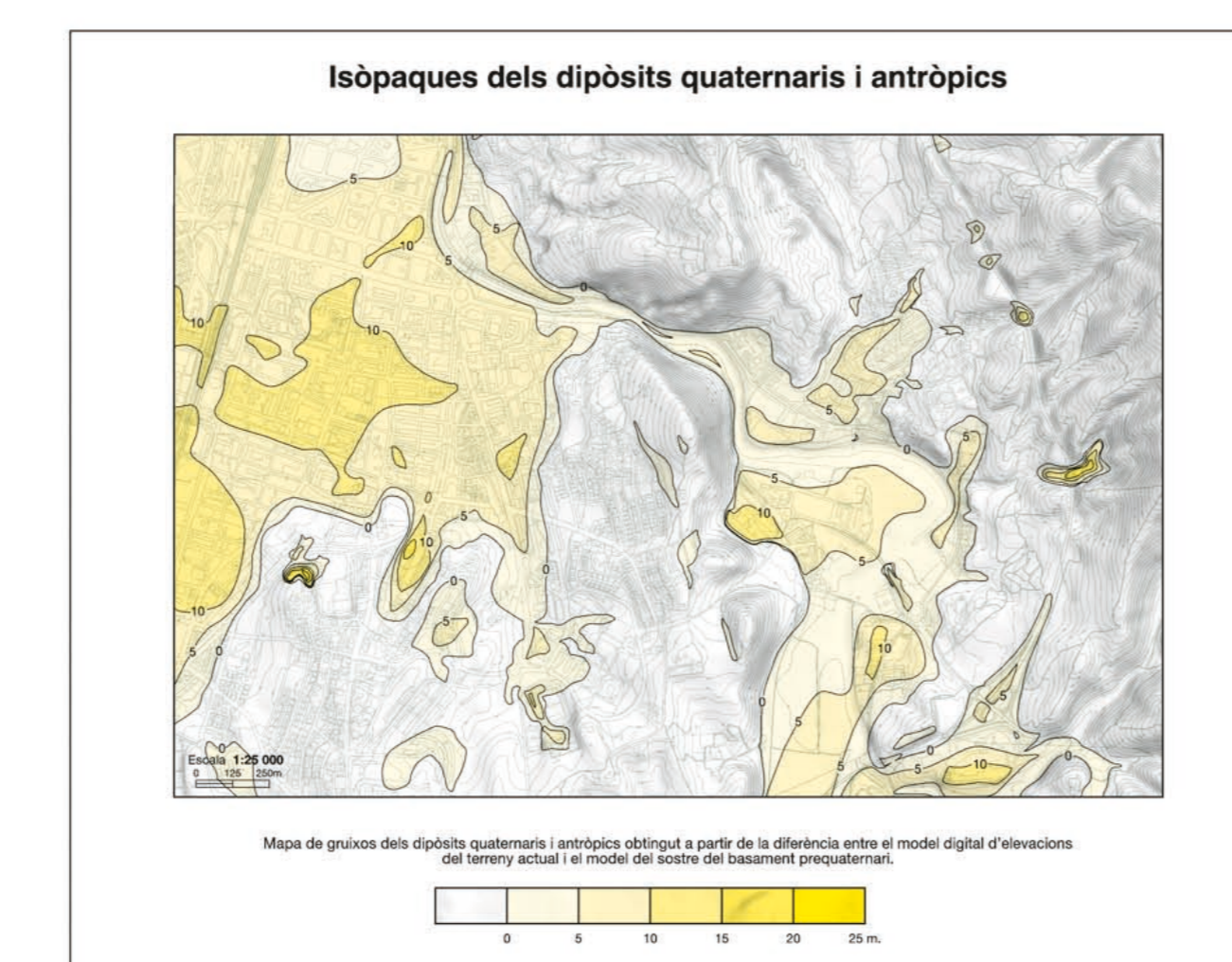
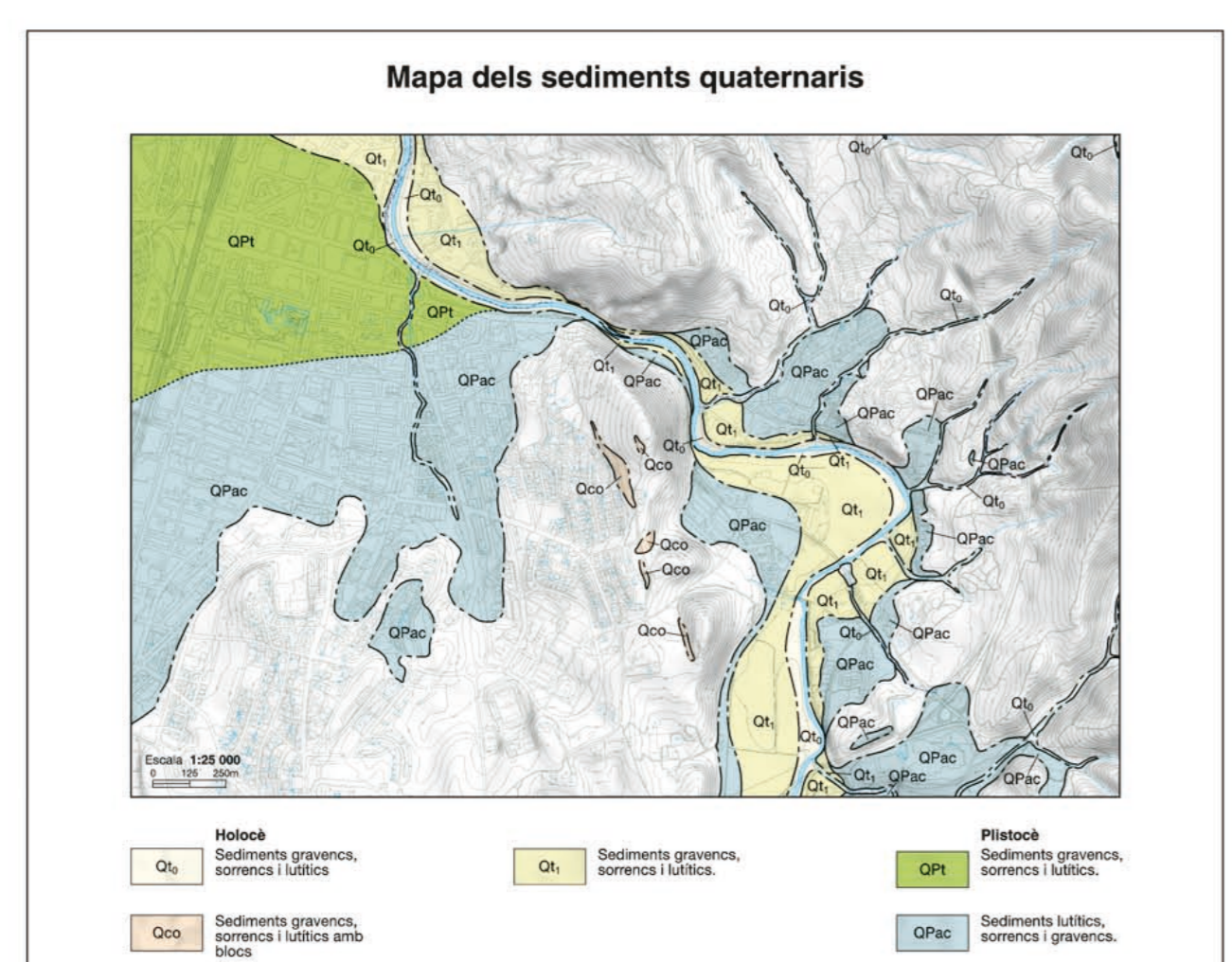


Legenda
Dipòsits antropics
Dipòsits quaternaris
Sediments neògens
Roques pàl·liques

Signes convencionals
Contornis elevacion
Contornis baixacion
Contornis horitzontal

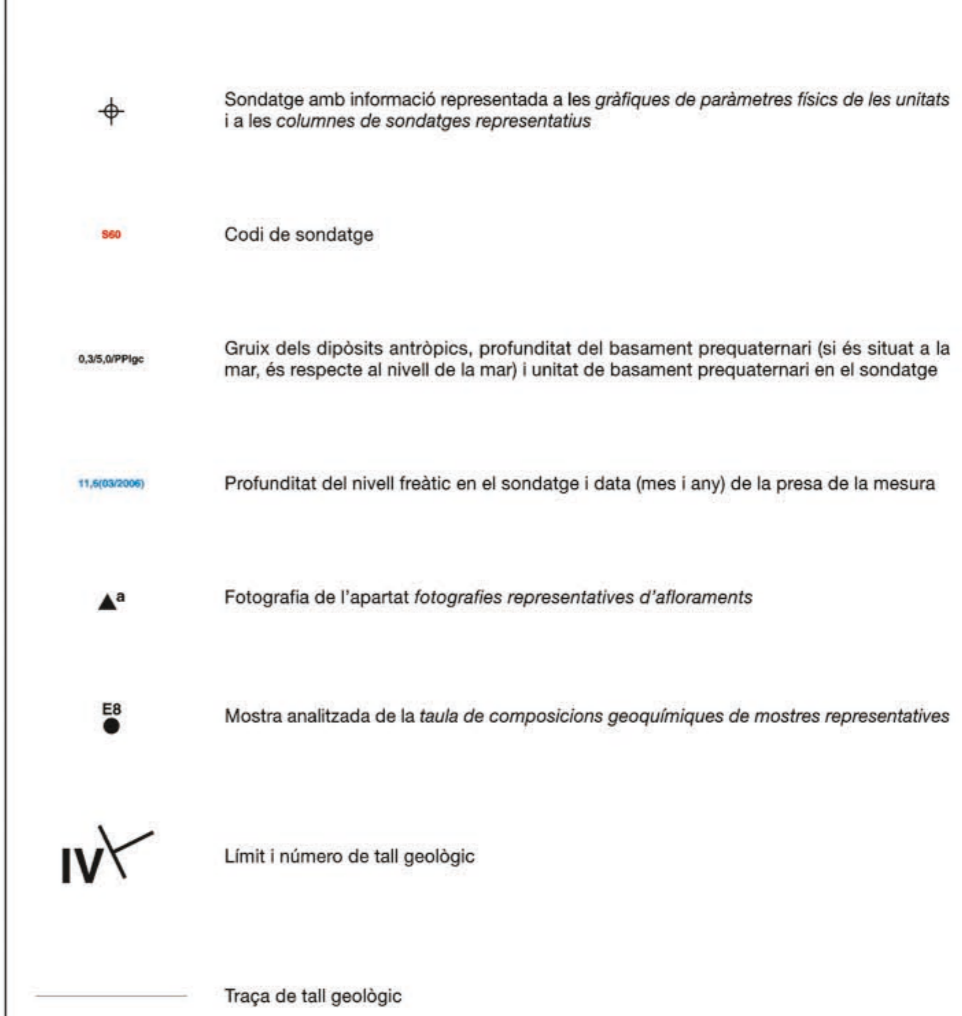


Mapa geològic de Catalunya Geotrabal·l III. Mapa geològic de les zones urbanes. Girona - Palau 305-098 (334-1-2). 1:5 000. ICGC logo and contact information.



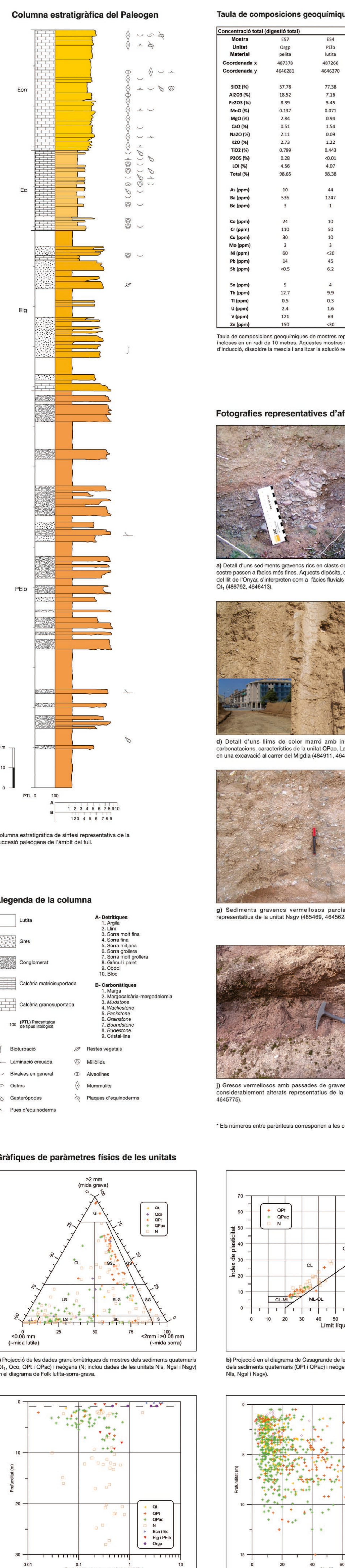
Sediments neògens
Sediments quaternaris
Roques pàl·liques

Columnes de sondatges representatius: Representative borehole columns showing stratigraphic profiles.



Legenda
Sediments antropics
Sediments quaternaris
Sediments neògens
Roques pàl·liques

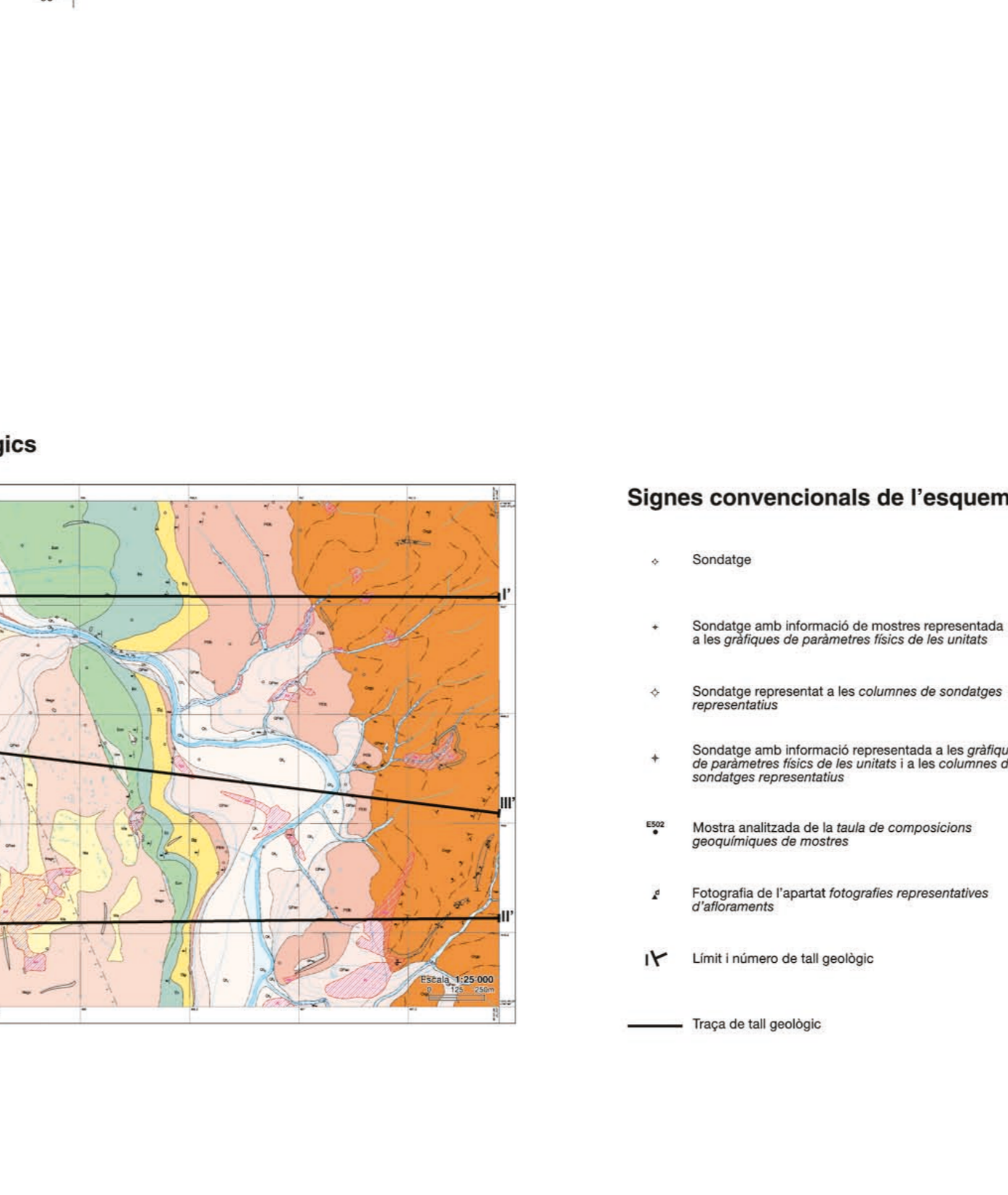
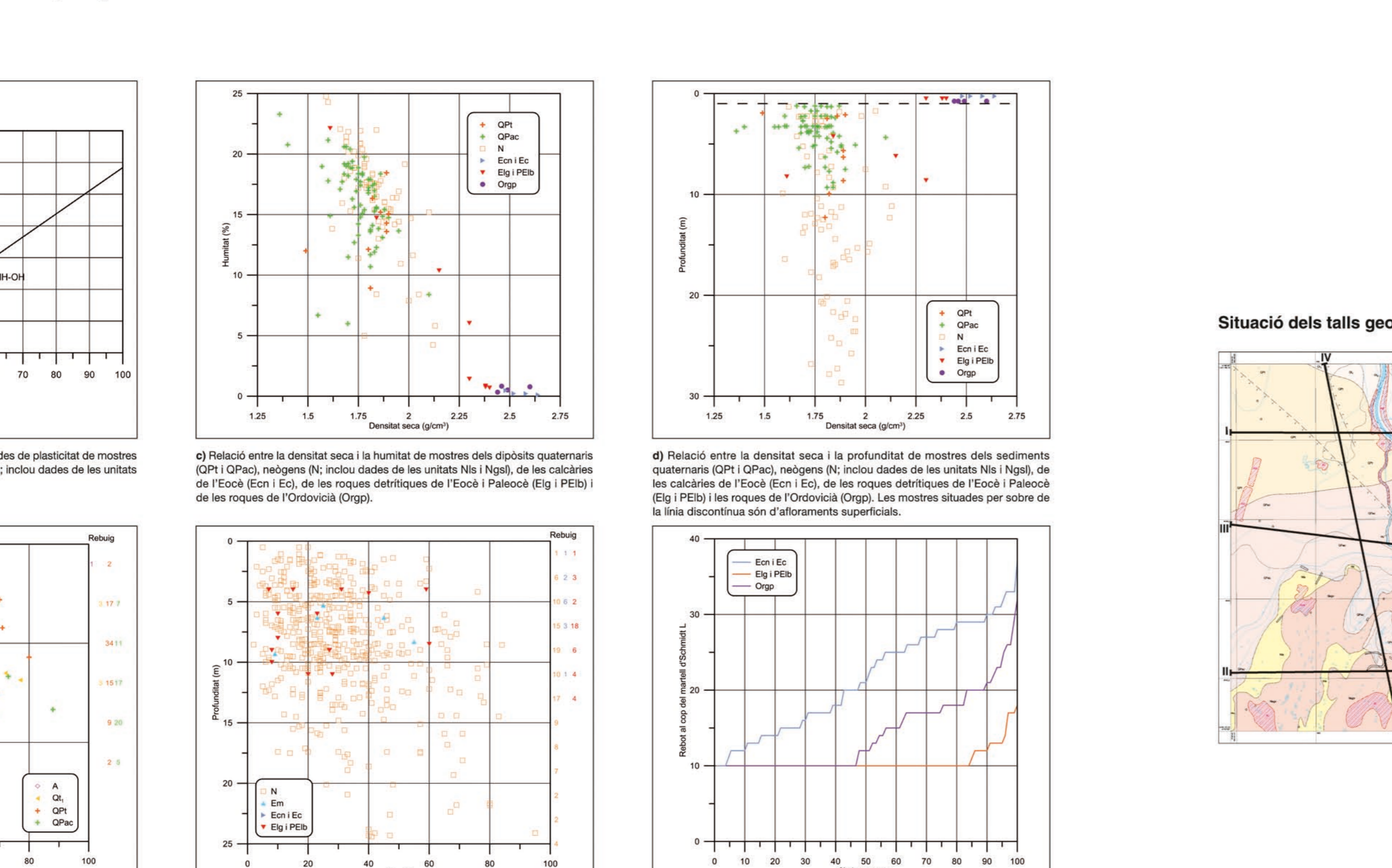
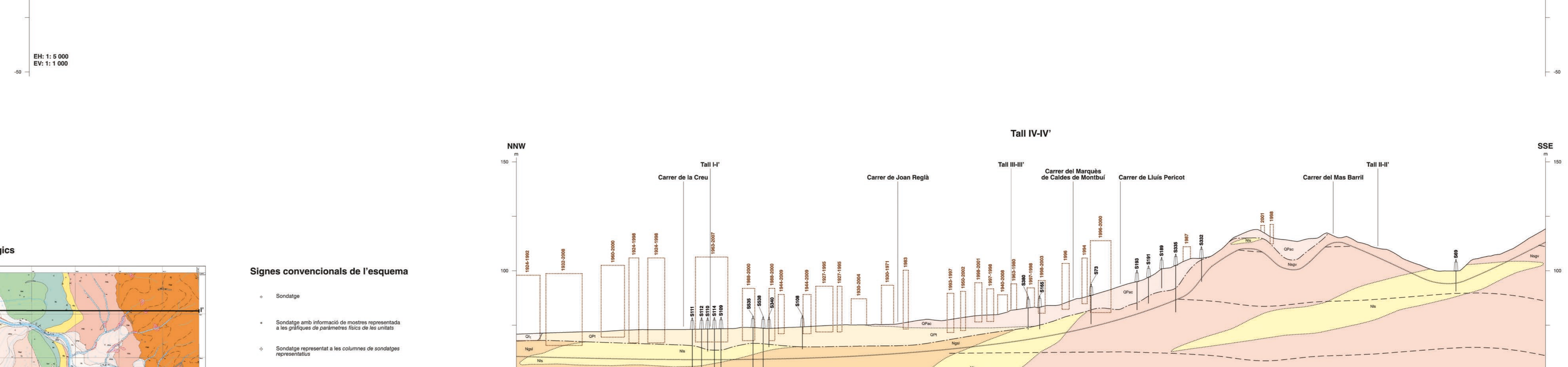
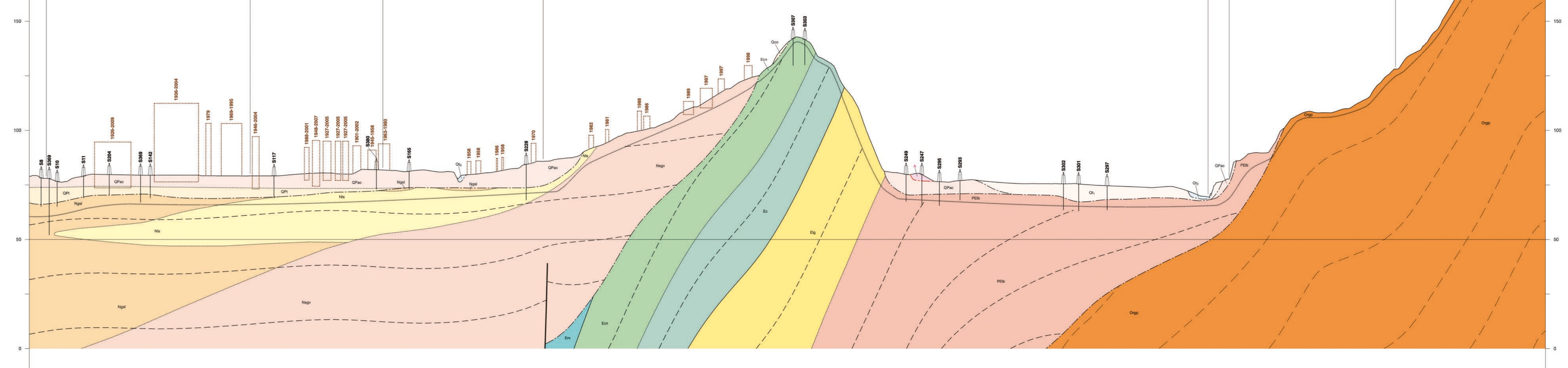
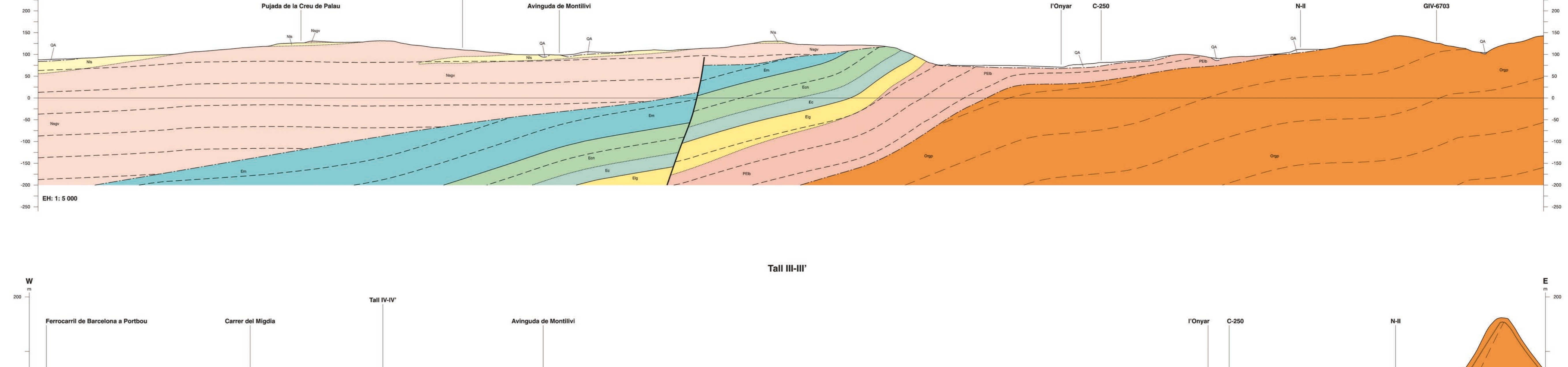
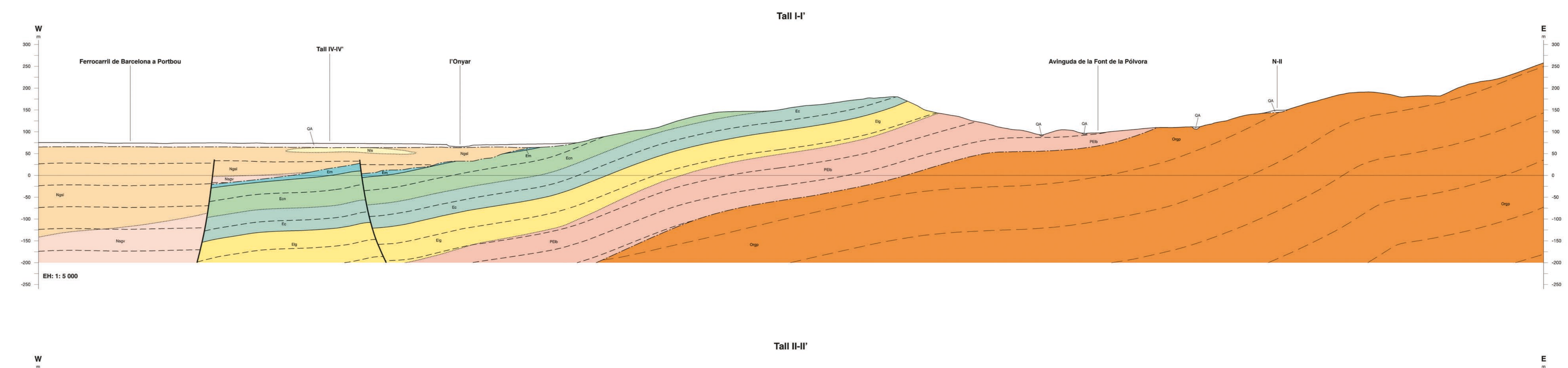
Mapa geològic de les zones urbanes 1:5 000



Taula de composicions geoquímiques de mostres representatives: Table of representative geochemical compositions for various geological units.



Legenda
Dipòsits antropics
Dipòsits quaternaris
Sediments neògens
Roques pàl·liques
Signes convencionals dels tallis



Signes convencionals de l'esquema: Conventional symbols for the geological scheme, including borehole symbols and structural markers.

