

Mostra GBAUTUA A BANA RESOLUCIÓ Institut Cartogràfic i Geològic de Catalunya - www.icgc.cat 2018

Legend (Llegenda) detailing symbols for geological units, signs, and symbols used on the map.

Project information including title, scale, author, and institutional affiliations.

Mare geològic: Description of the geological context and the area covered by the map.

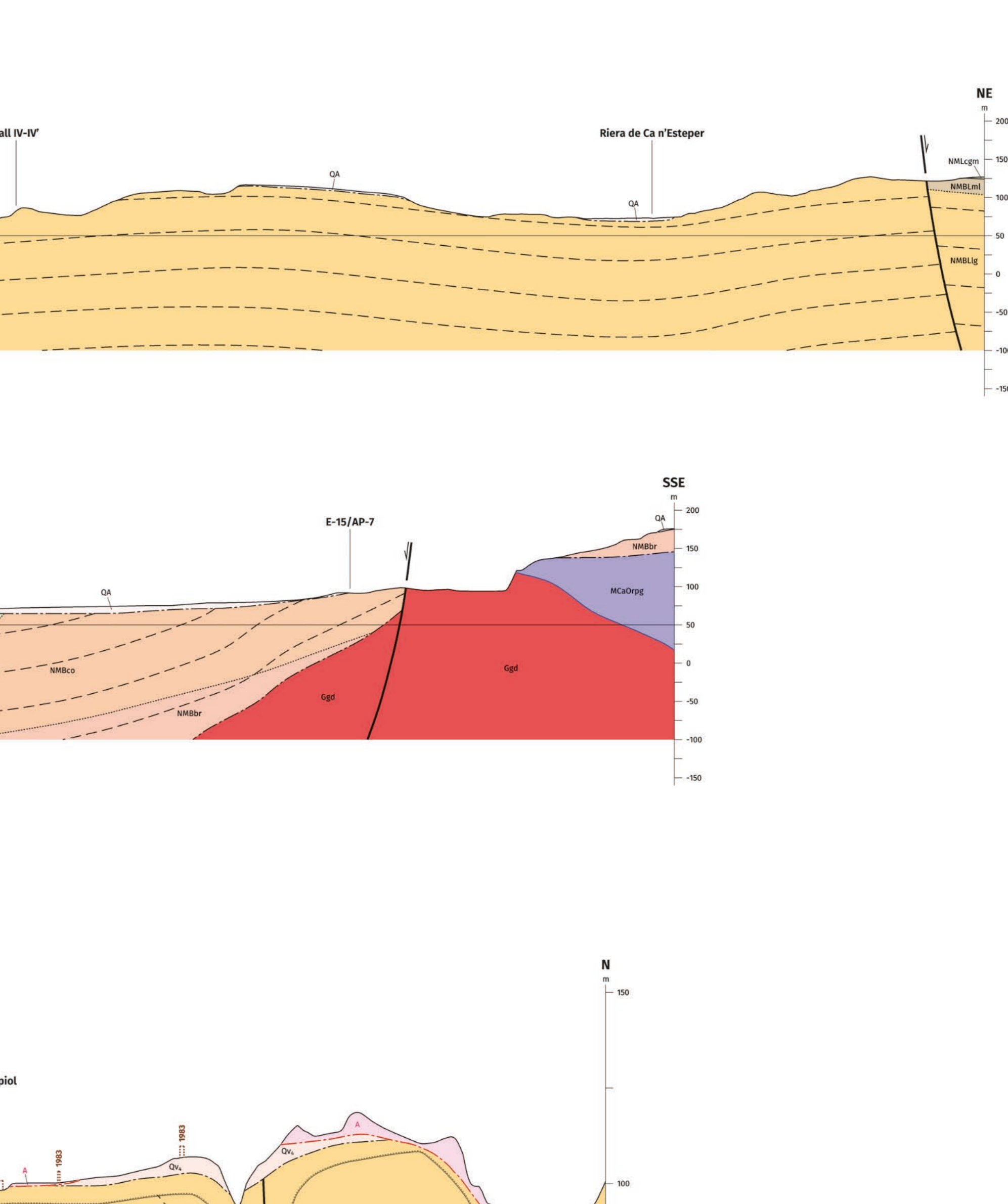
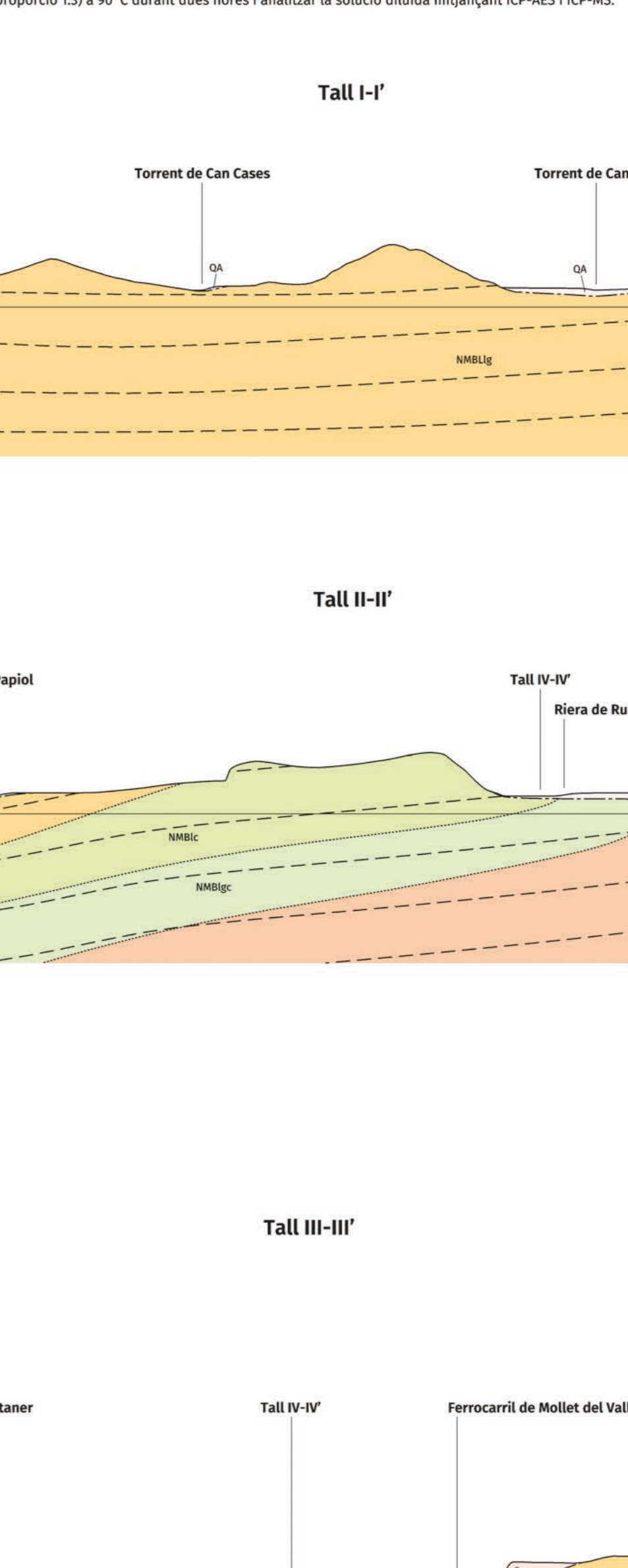
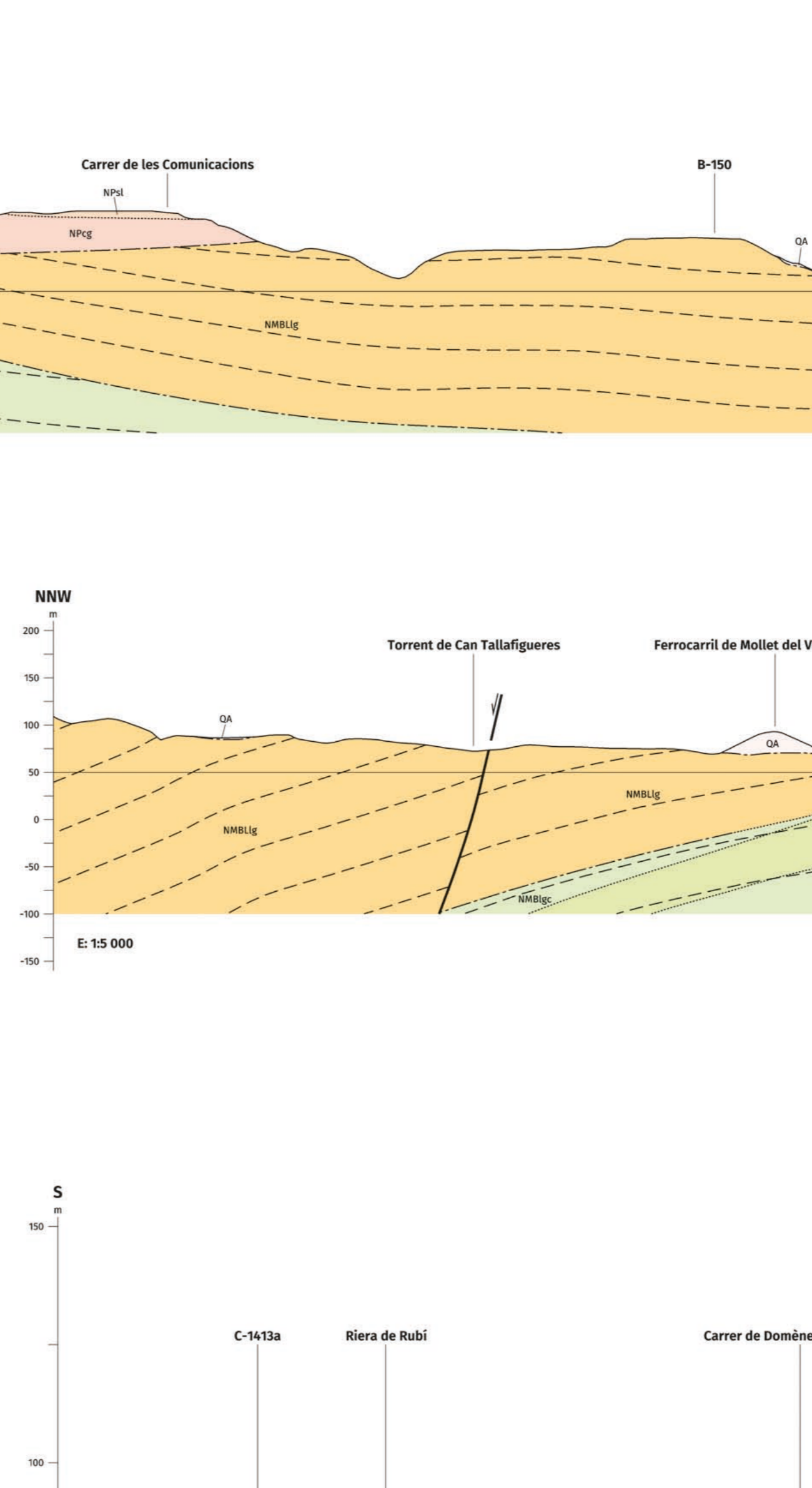
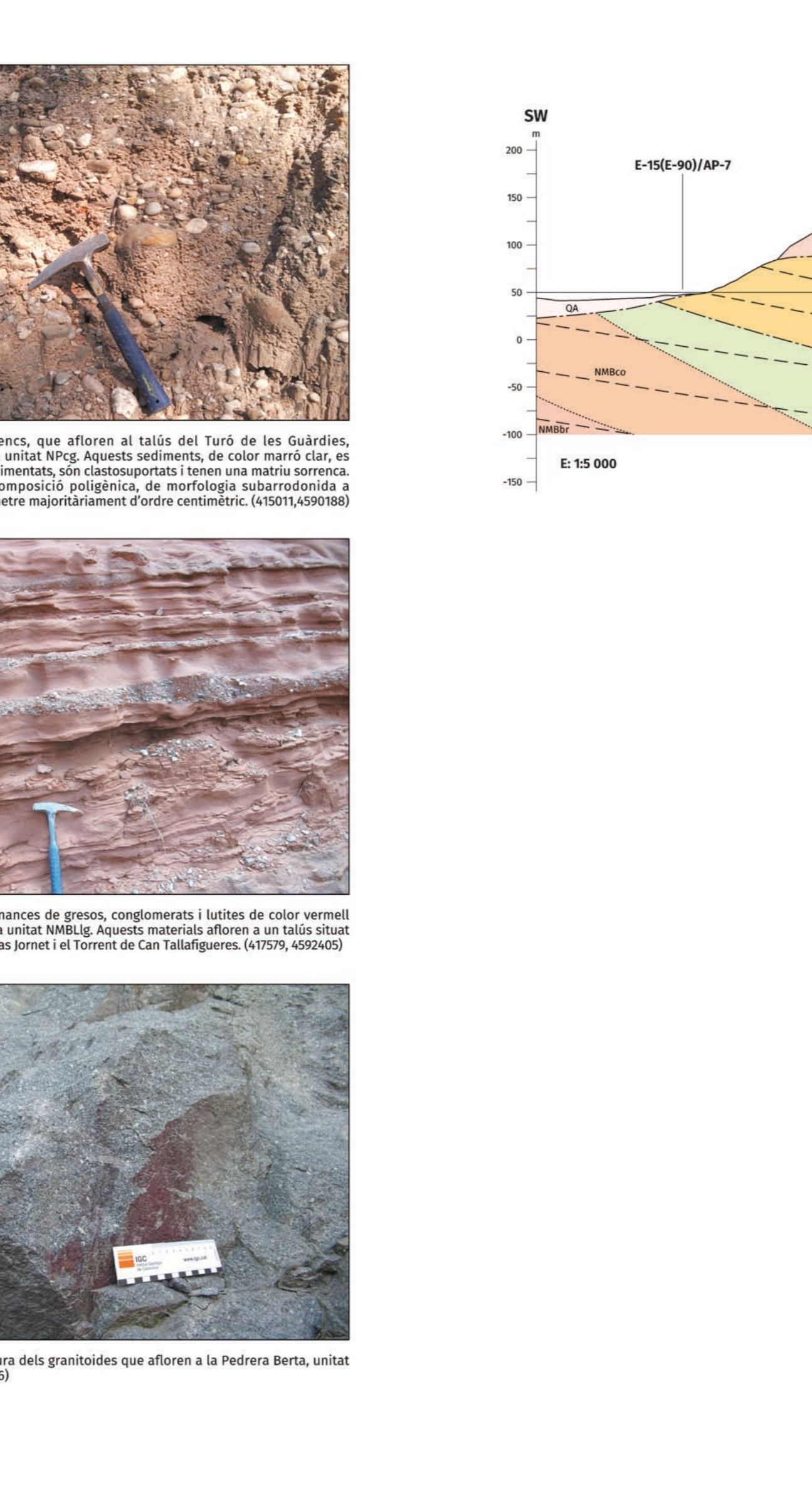
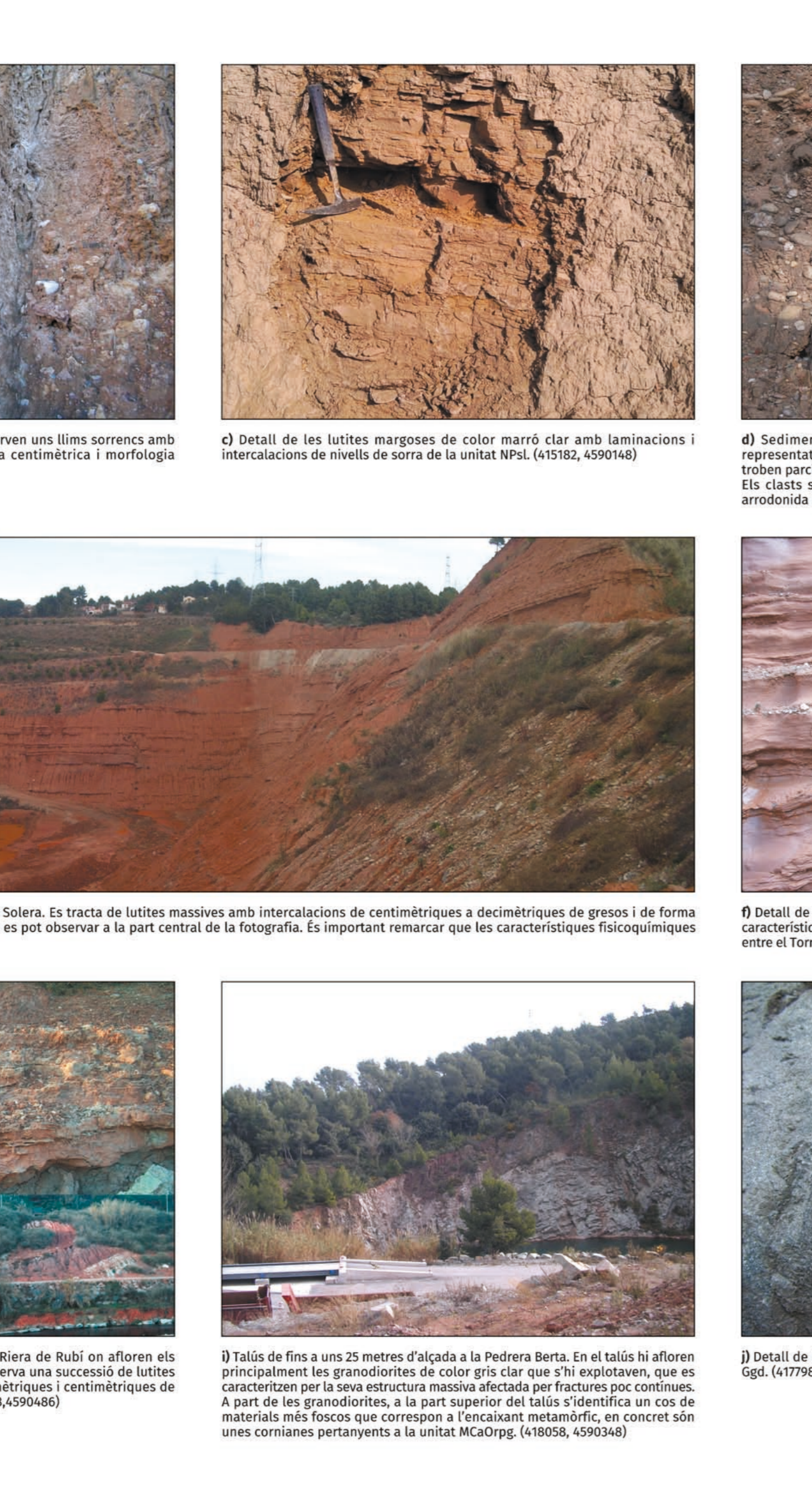
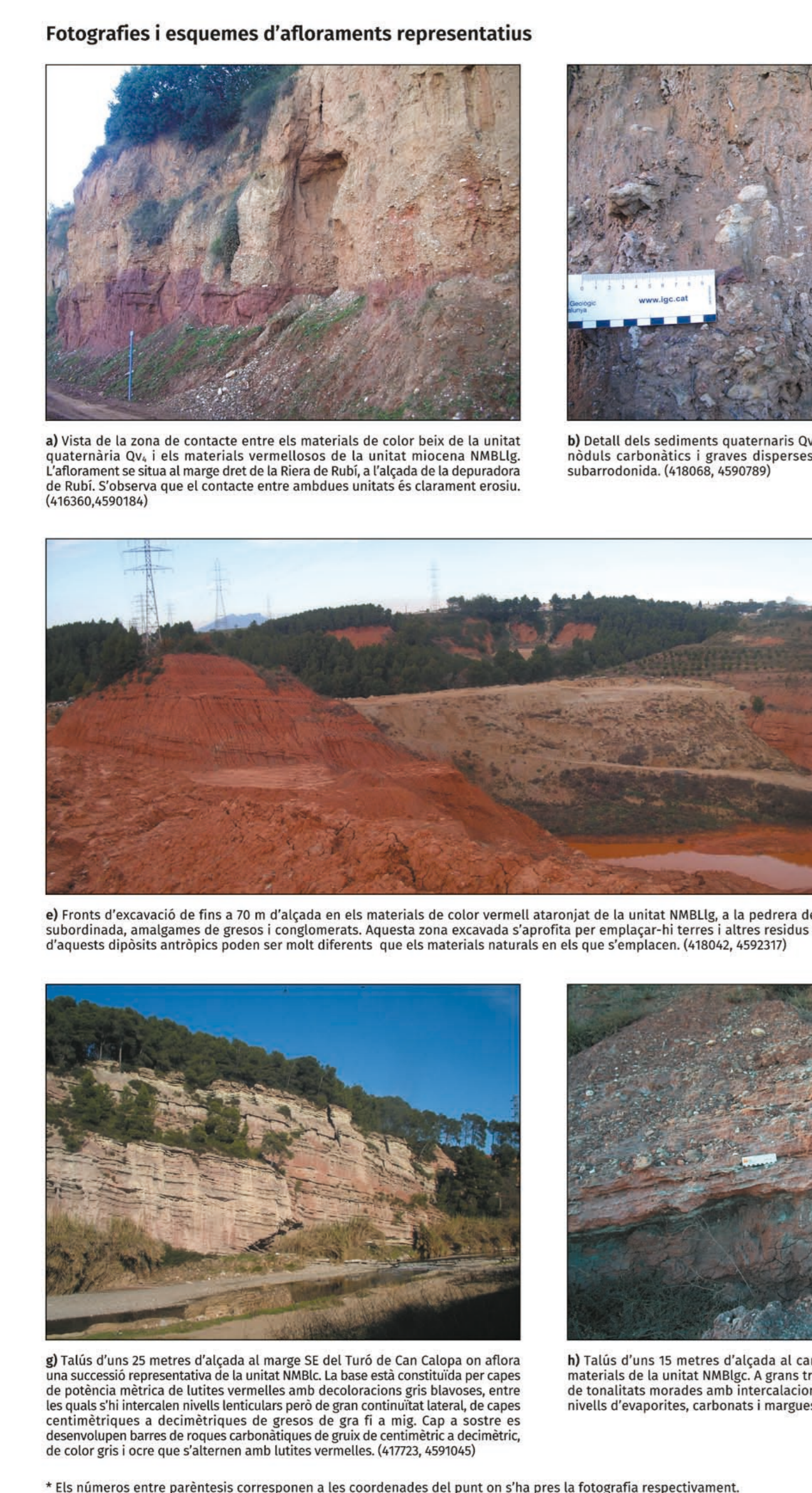
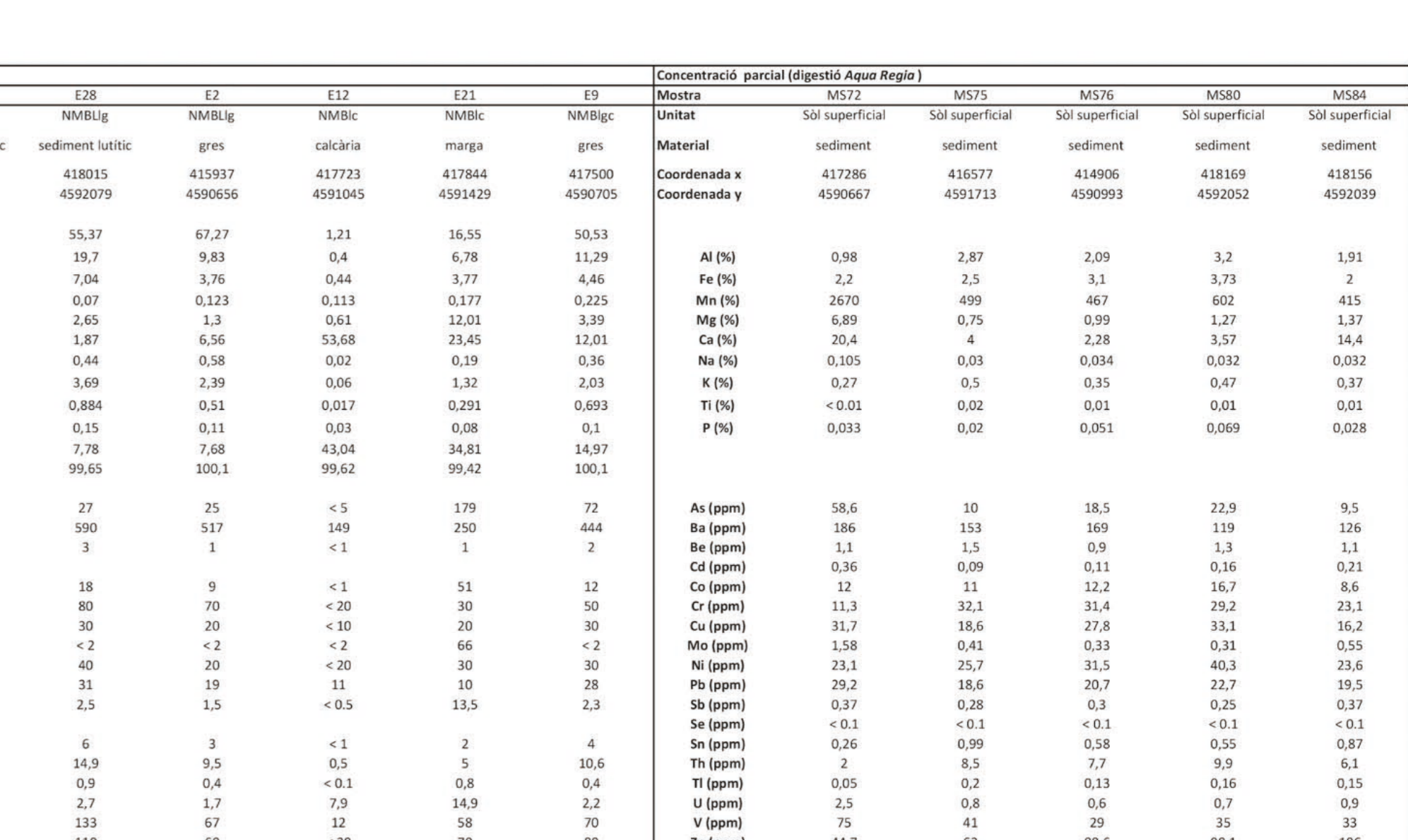
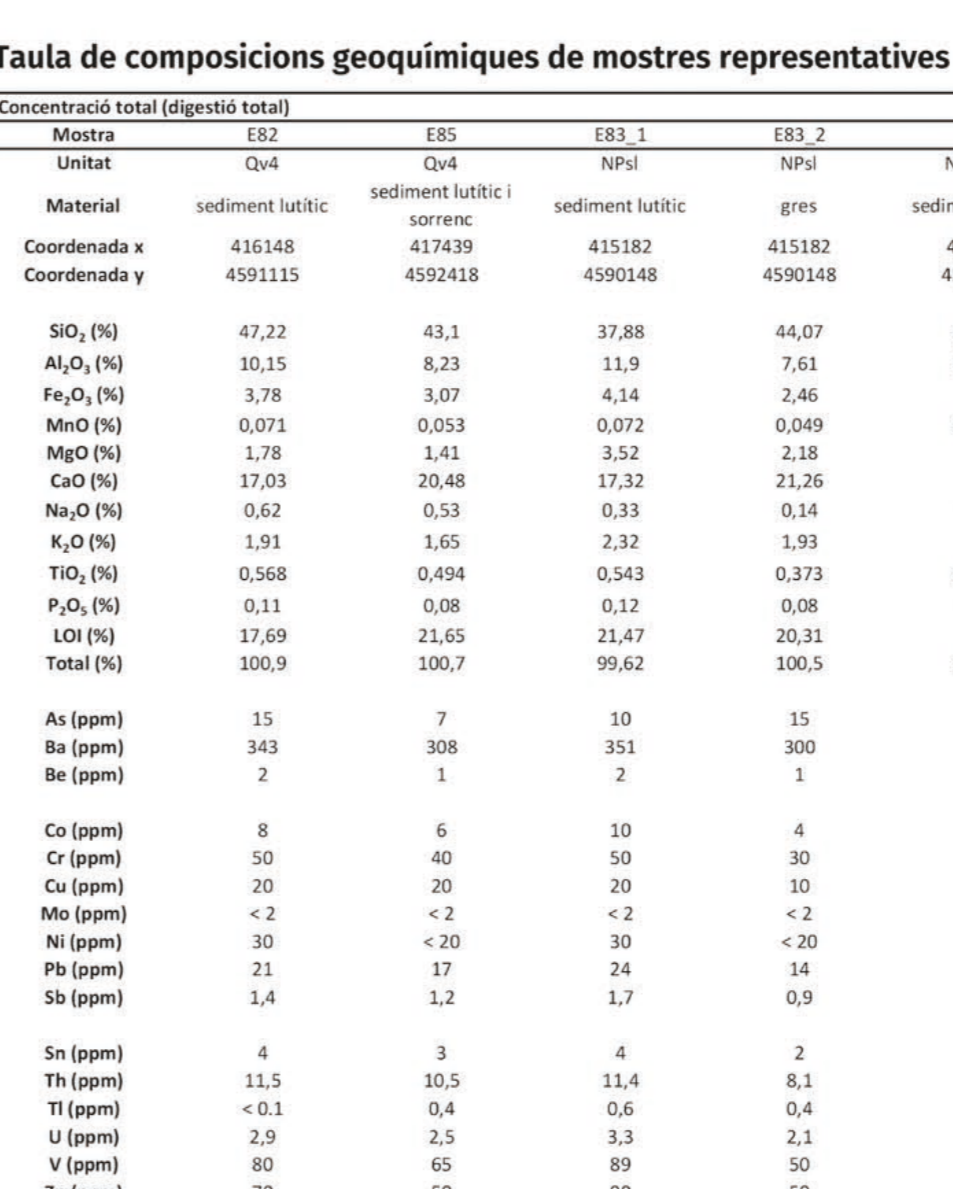
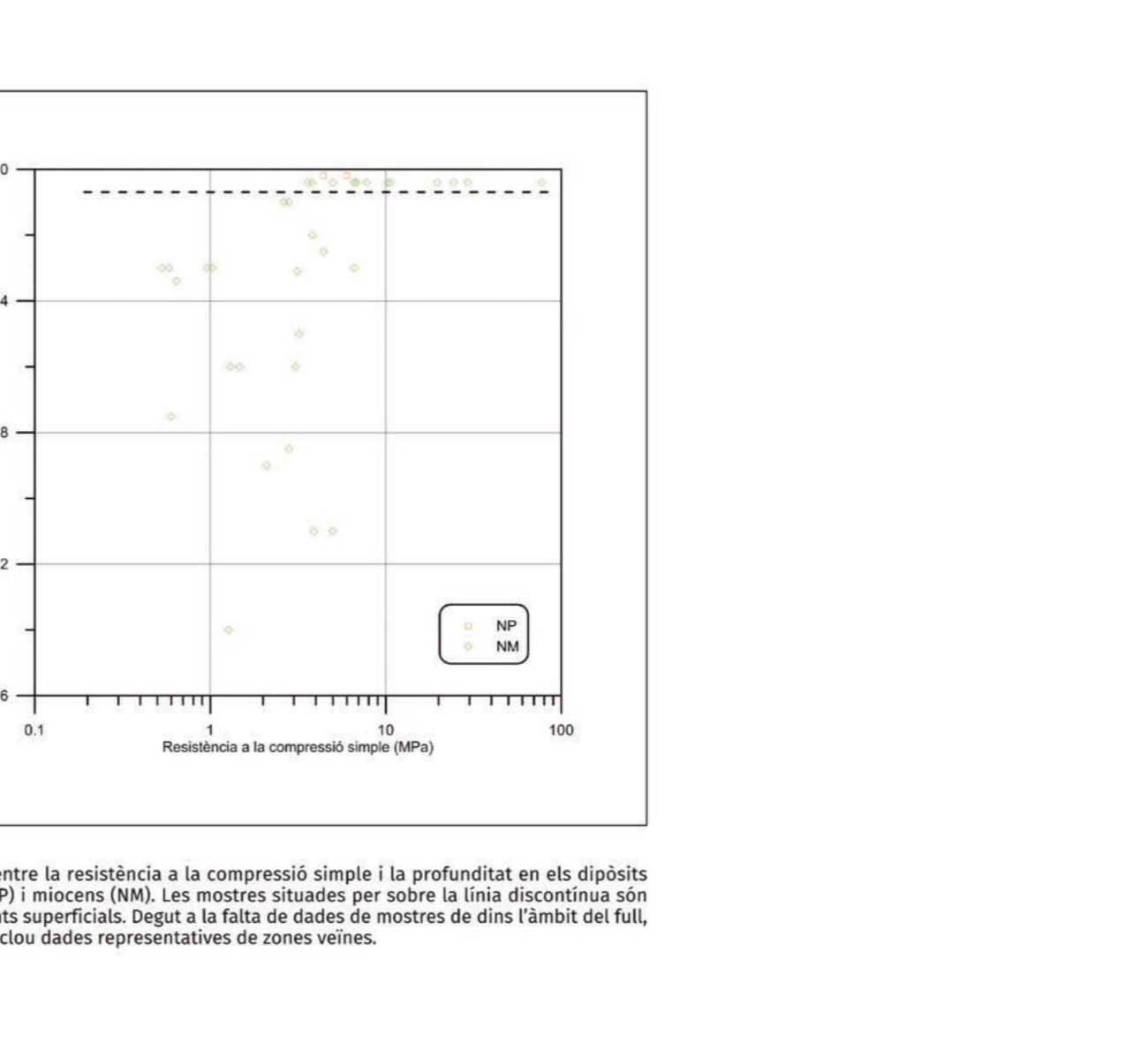
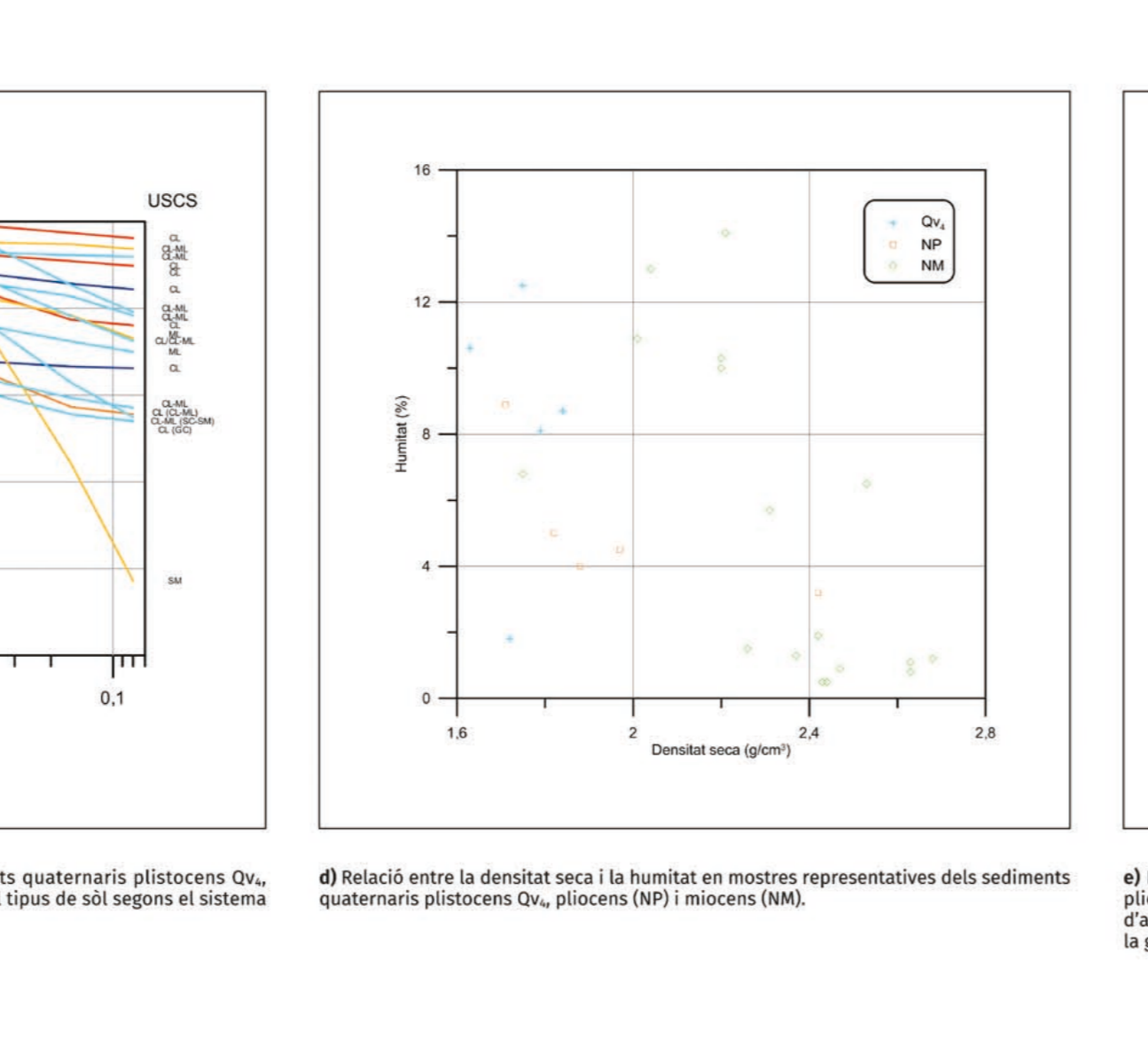
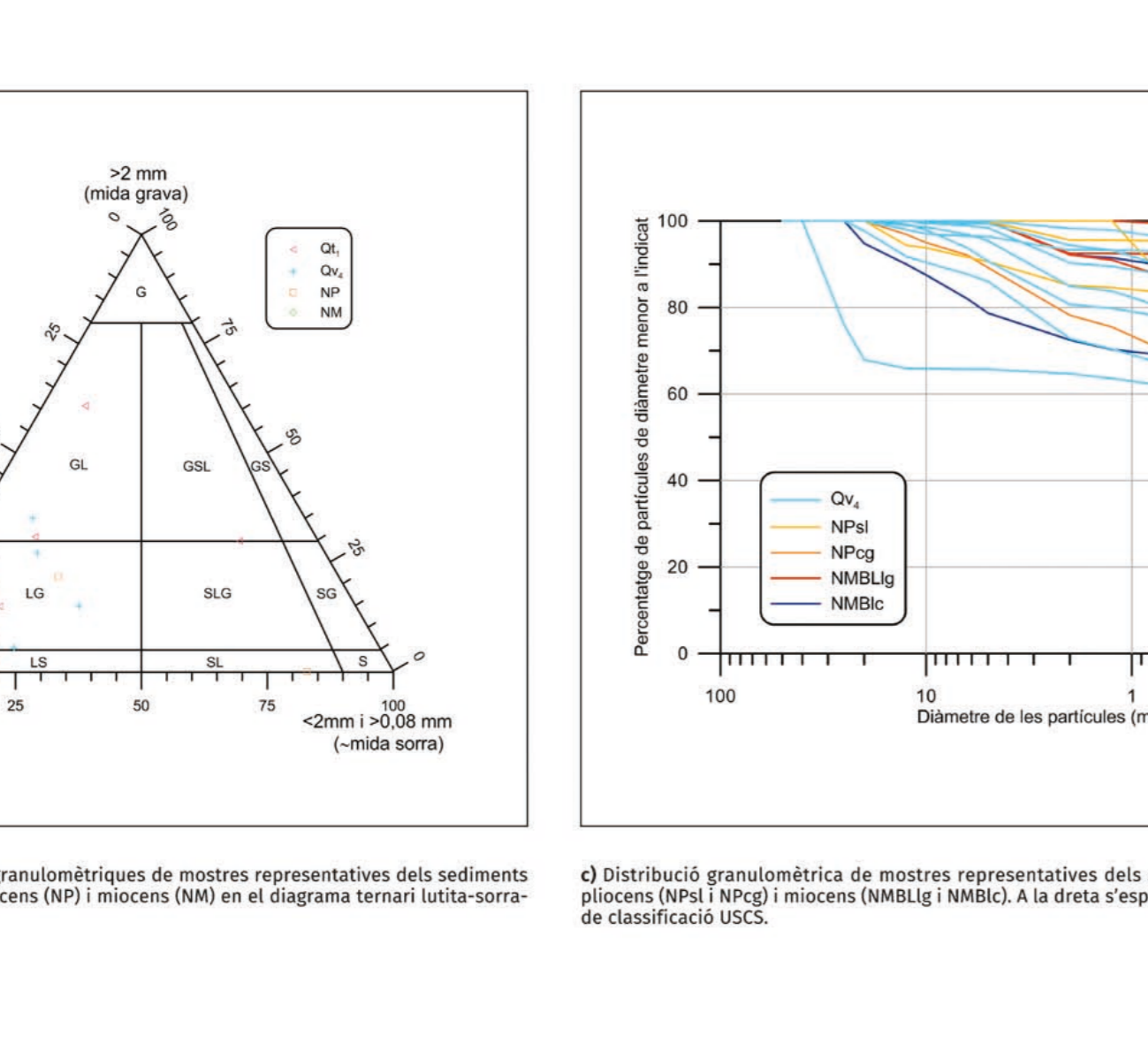
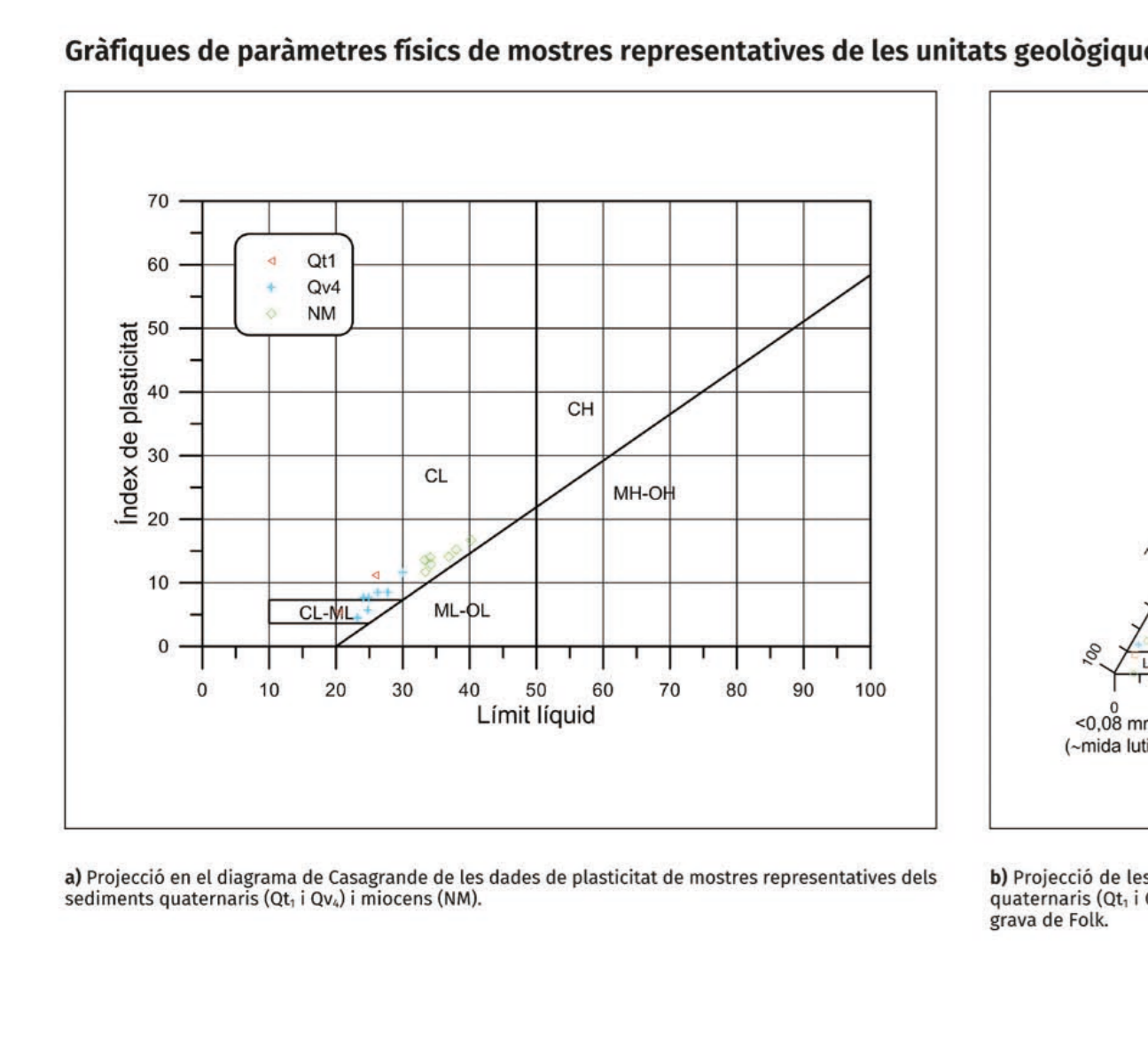
Situació geològica: Geographical location and context of the study area.

Basament prequaternari: Description of the pre-Quaternary basement rocks.

Ortofotografia històrica: Historical aerial photography showing the area's appearance in the past.

Sediments quaternaris: Description of the Quaternary sedimentary deposits.

Signes convencionals: Conventional signs and symbols for geological features.



Legend (Llegenda) for the geological map, detailing symbols and signs.

Legend (Llegenda) for the geological map, detailing symbols and signs.

Legend (Llegenda) for the geological map, detailing symbols and signs.

Legend (Llegenda) for the geological map, detailing symbols and signs.

Legend (Llegenda) for the geological map, detailing symbols and signs.

Legend (Llegenda) for the geological map, detailing symbols and signs.