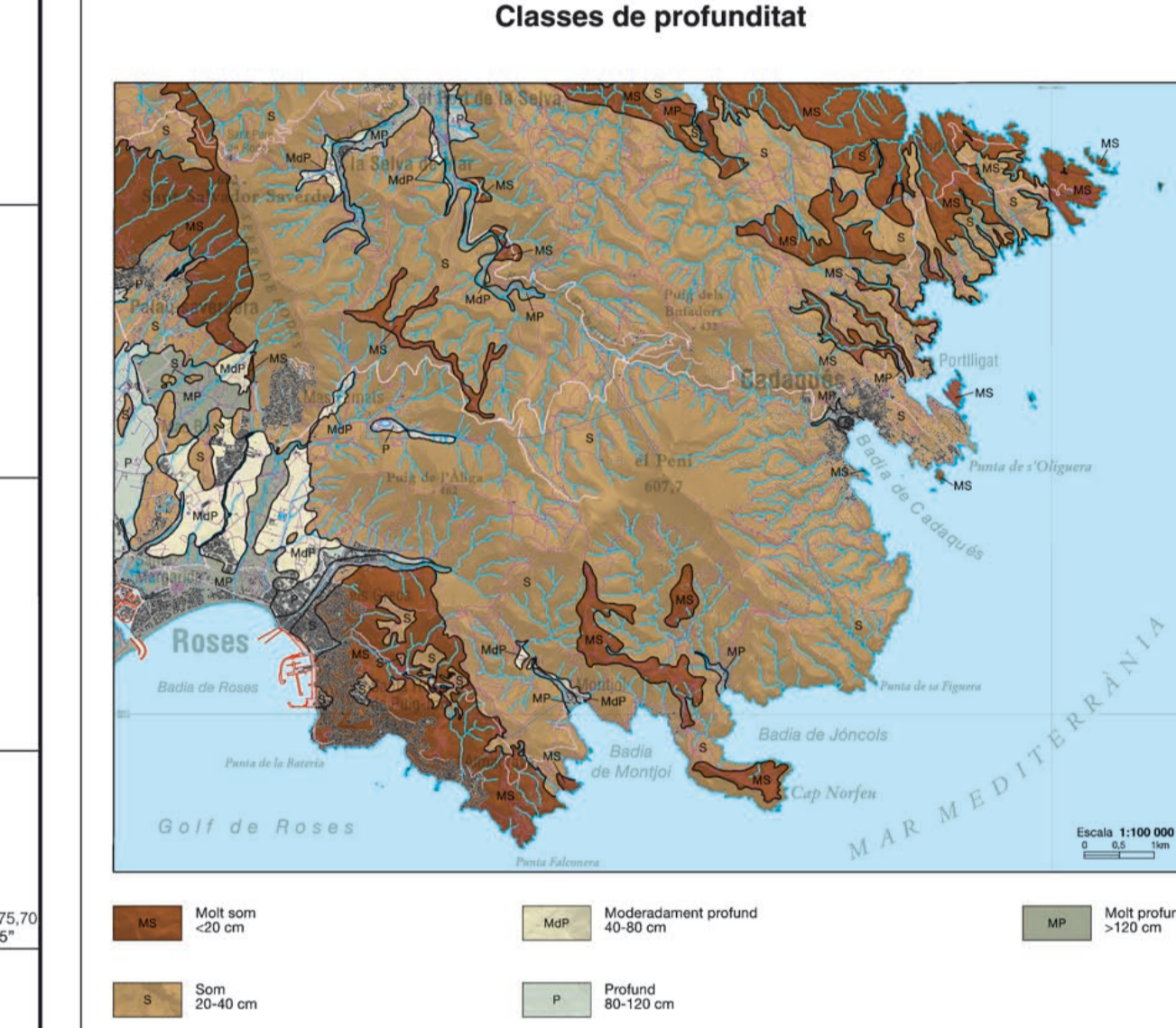
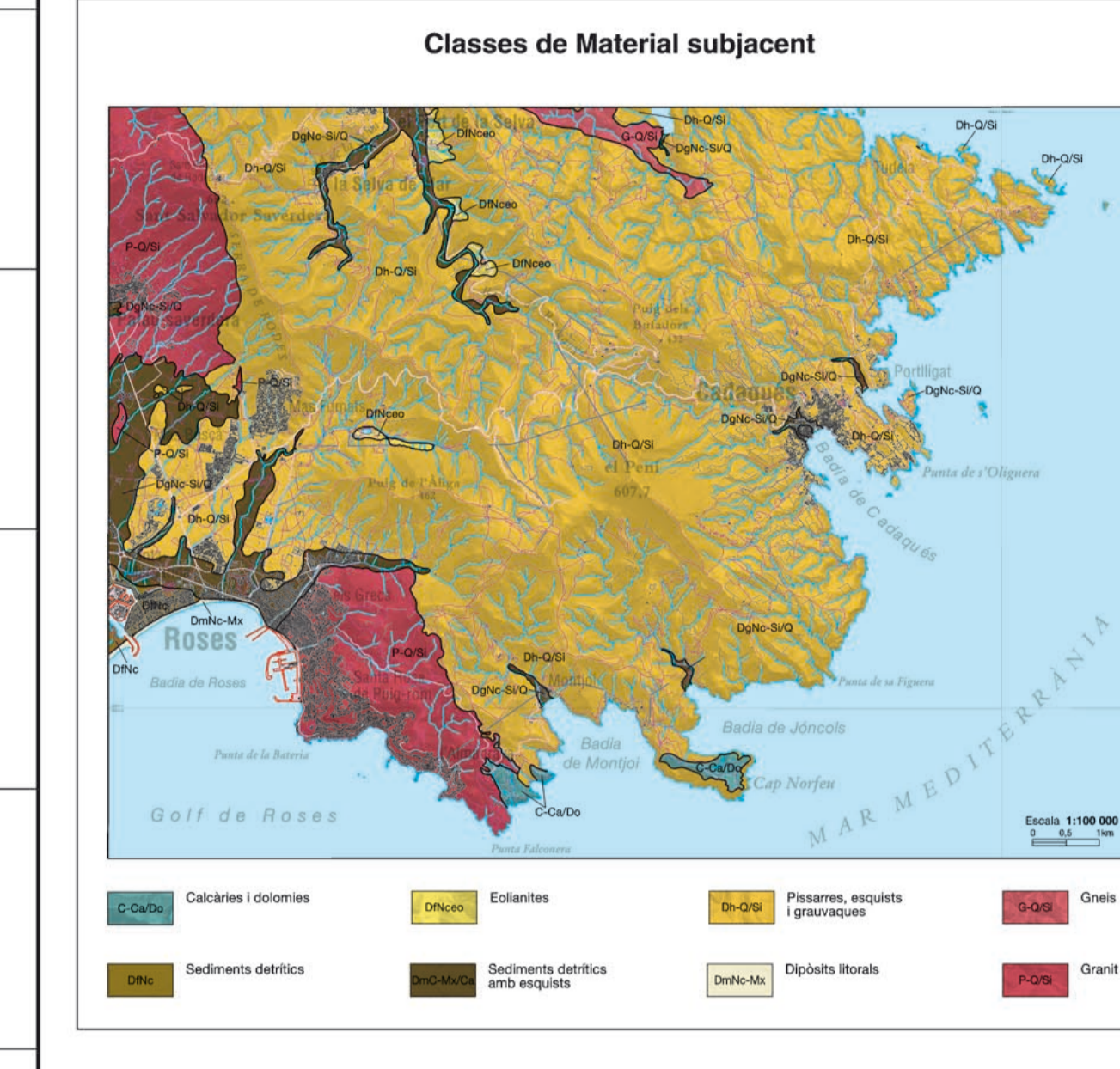
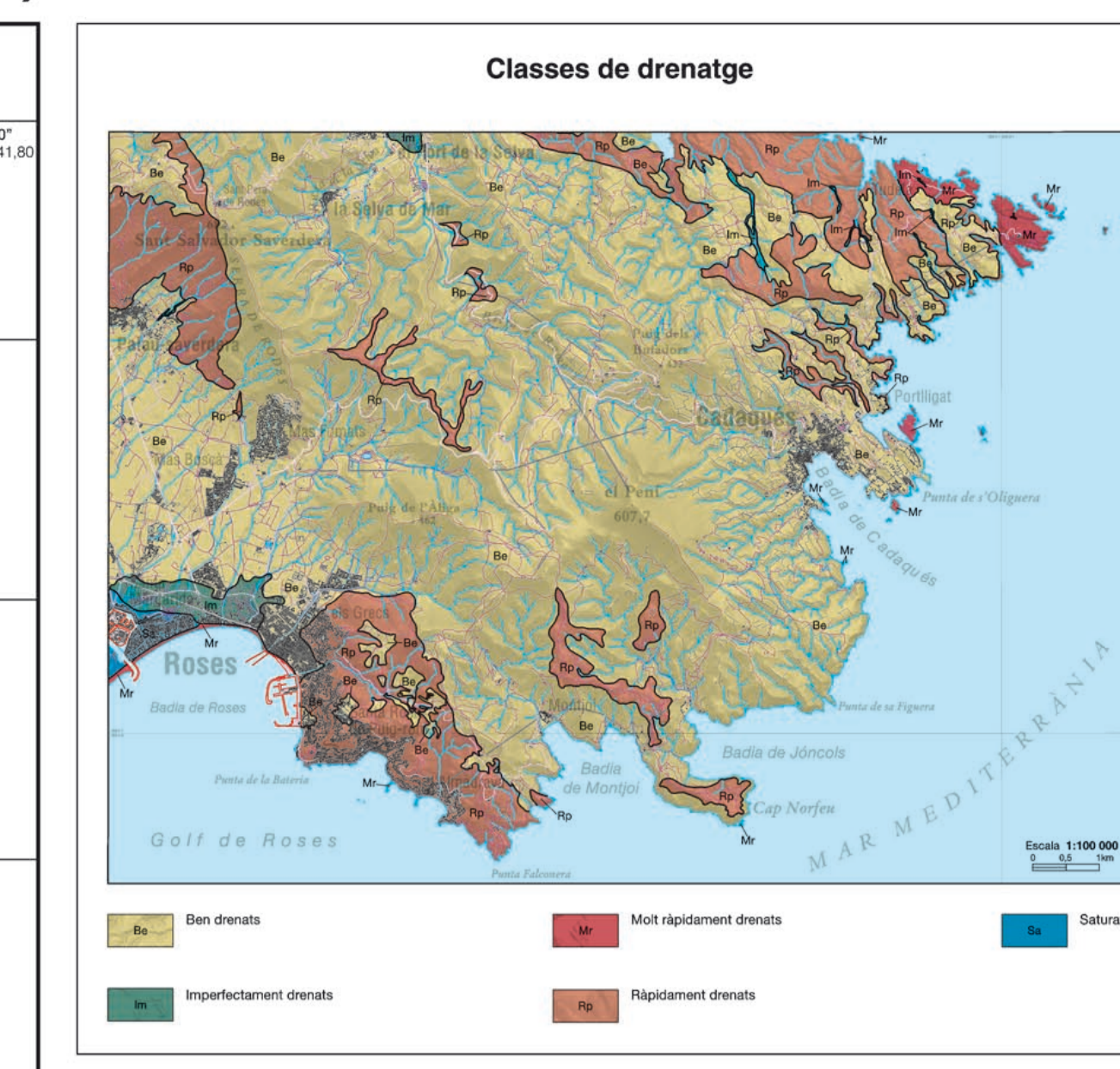
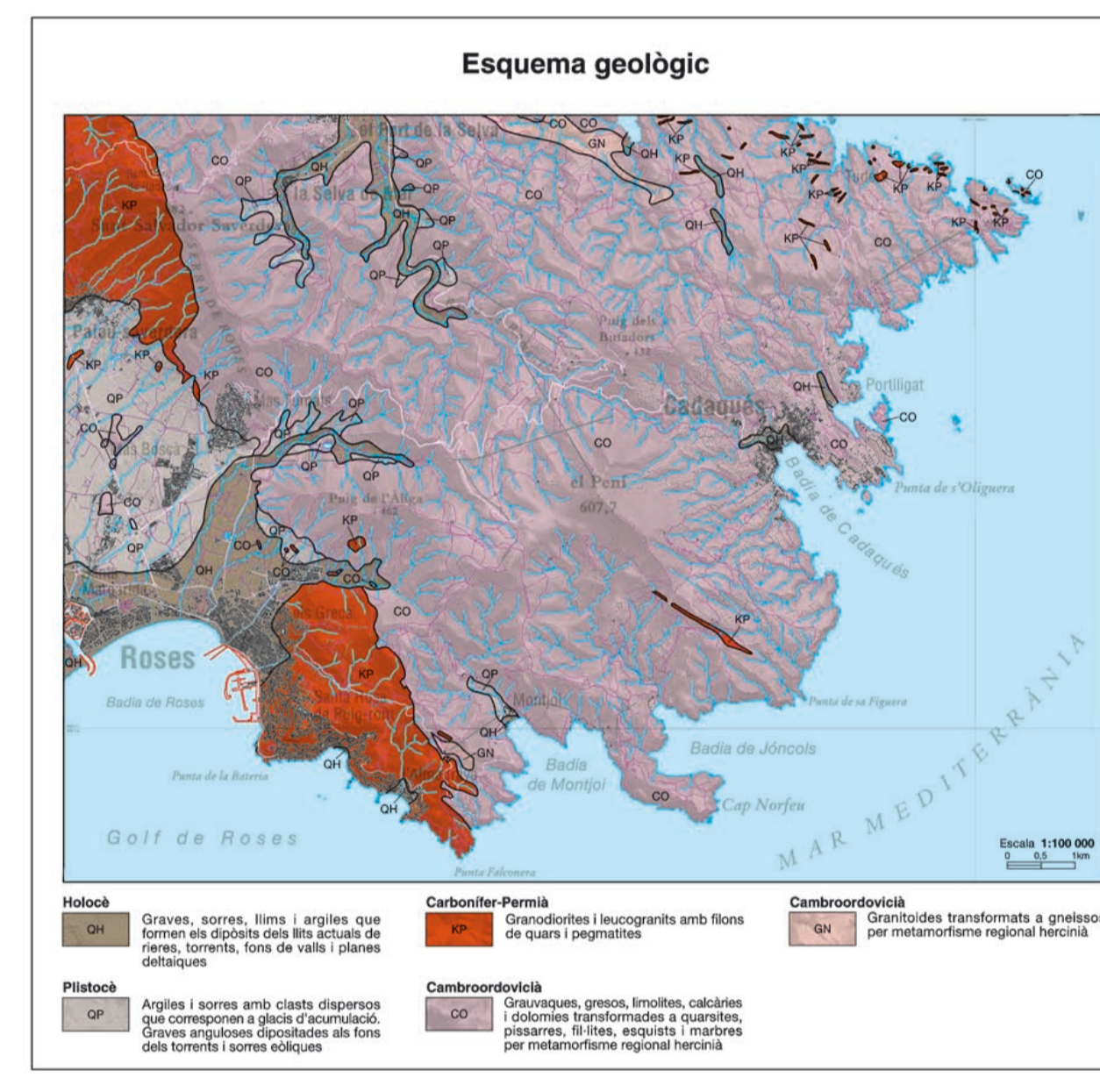
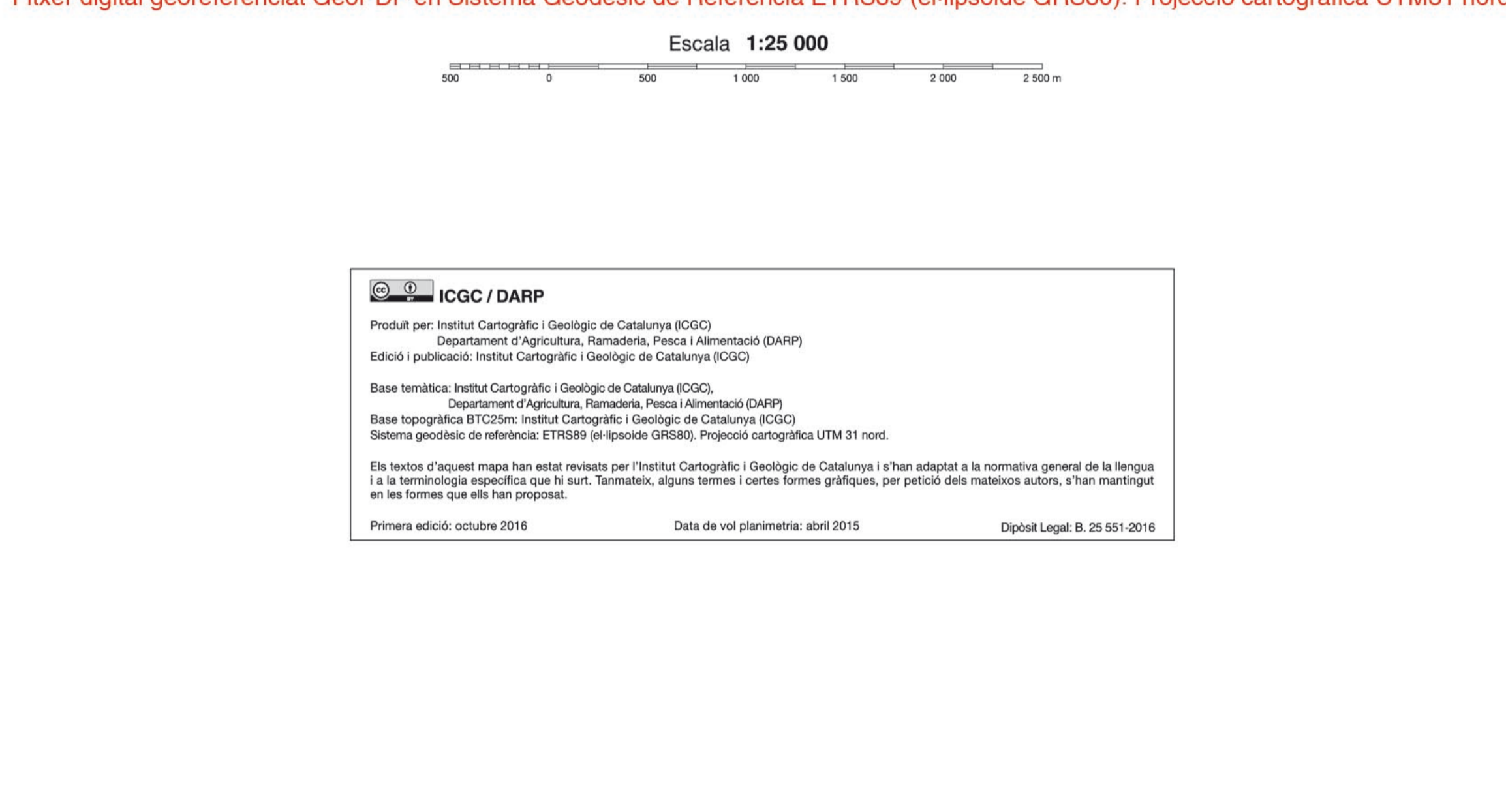
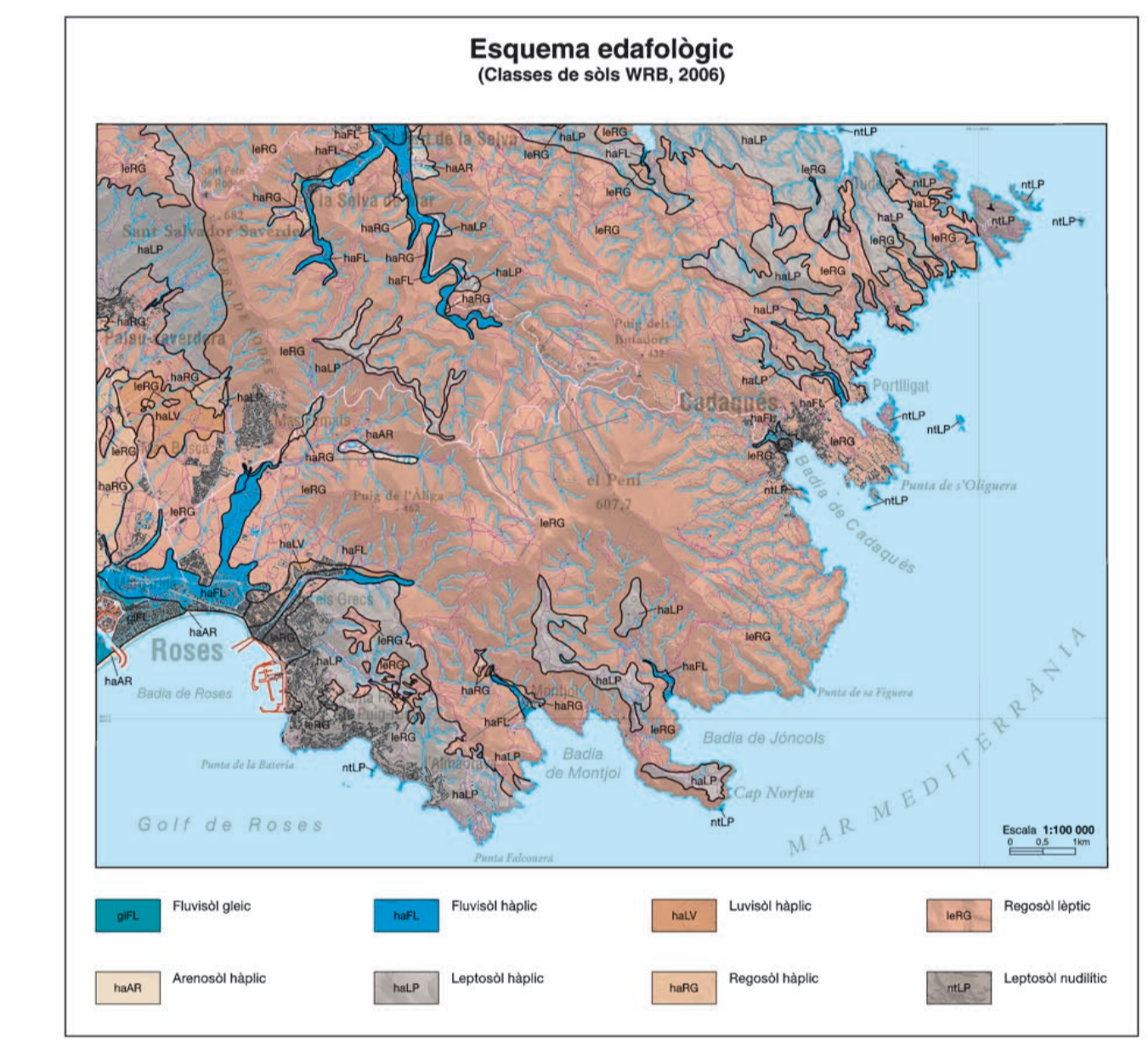
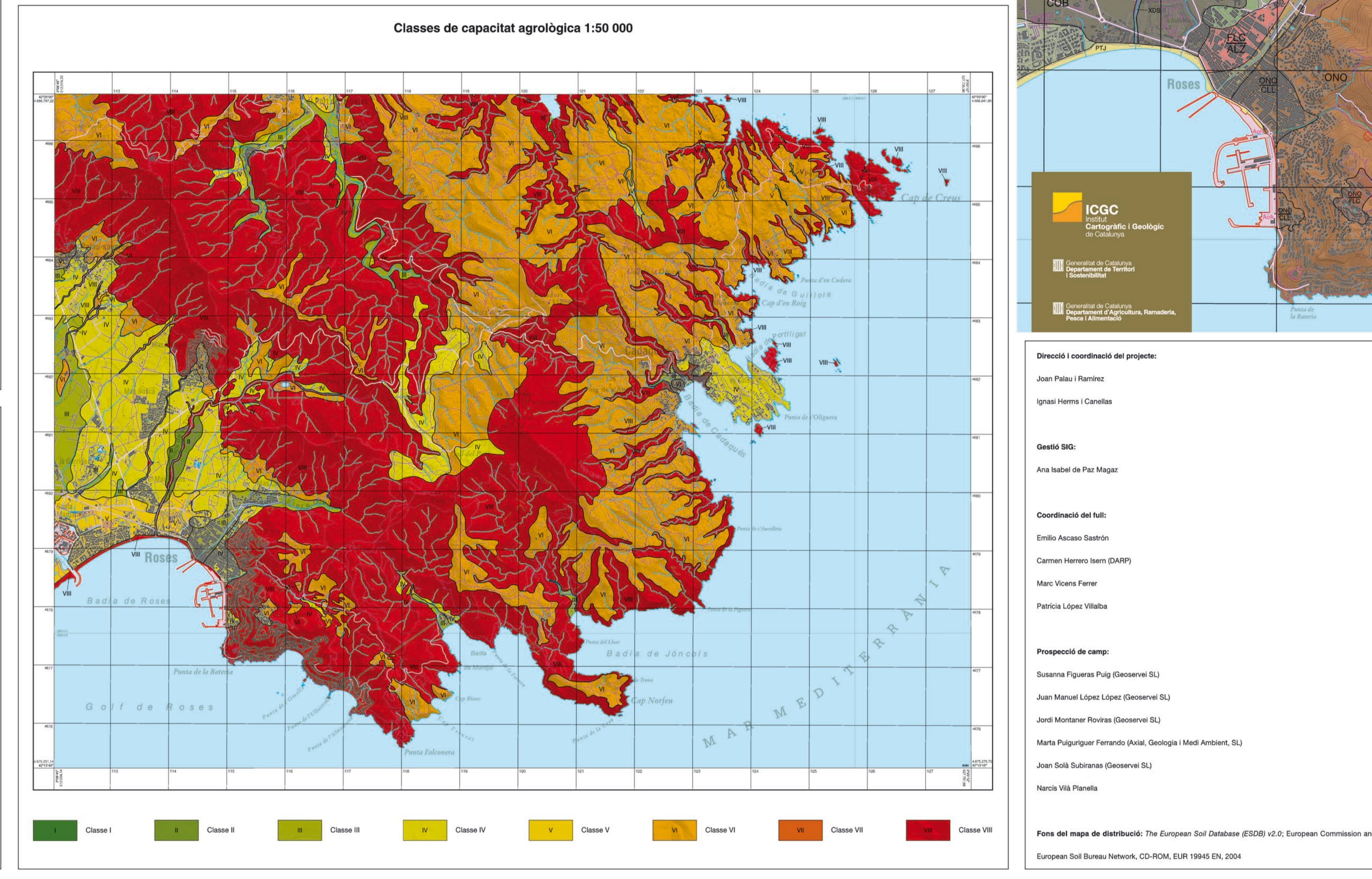




Mapa digital georeferenciat GeoPDF en Sistema Geocòmic de Referència UTM39 (a l'isopode CRS80). Projecció cartogràfica UTM31 nord



Legend table with columns for 'Unitat cartogràfica', 'Classificació Soil Taxonomy (SSS, 1999)', and 'Classificació WRB (USS, 2007)'. It lists various soil units like Corbera, Carovores, Estanyol, Fare, Gola, Macau, Norfeu, Onofre, Xirau, Baltes-Farella, Cuelles-Sinols, Corbera-Farella, Corbera-Travada, Falconeres-Ponac, Falconera-Abada, Fare-Alforrens, Fare-Beltes, Fare-Farola, Fare-Correls, Onofre-Cloella, Onofre-Falconera, Xirau-Xirau, Xirau-Xirau, Aforaments rocosos, and Platja, along with their corresponding soil types and characteristics.



Methodology section (Resum metodològic) detailing the soil classification process, including references to various soil classification systems like WRB, Soil Taxonomy, and national/regional systems. It includes a flowchart of the classification process and a list of references.

Soil type descriptions (Tipus de sòls) for units ALZEDA, FARELLA, ONOFRE, BELTRES, FALCONERA, PONAC, CLOELLA, FARE, QUERALS, CORBERA, GOLA, SINOLS, and XIRAU. Each entry includes a brief description of the soil type and a photograph of a representative soil profile.

Soil type descriptions (Tipus de sòls) for units FARELLA, FALCONERA, PONAC, QUERALS, CORBERA, GOLA, SINOLS, and XIRAU. Each entry includes a brief description of the soil type and a photograph of a representative soil profile.

Soil type descriptions (Tipus de sòls) for units FARELLA, FALCONERA, PONAC, QUERALS, CORBERA, GOLA, SINOLS, and XIRAU. Each entry includes a brief description of the soil type and a photograph of a representative soil profile.

Table of soil physicochemical properties (Propietats fisicoquímiques del sòl) for various soil units. The table lists units like ALZEDA, BALTRES, CLOELLA, CORBERA, CAROVORES, ESTANYOL, FARE, FALCONERA, GOLA, MACAU, ONOFRE, PONAC, QUERALS, CORBERA, GOLA, SINOLS, XIRAU, and XIRAU, along with their physical and chemical characteristics such as texture, pH, organic matter, and cation exchange capacity.

Geological map of Catalonia (Mapa geològic de Catalunya) showing the location of the study area. It includes a scale of 1:25,000 and a north arrow. The map highlights the study area in the region of Roses, Cap de Creus, and Far de Roses.

Project information (Dades i coordinació del projecte) including the project name, authors, scale, and contact information for the Institut Cartogràfic i Geològic de Catalunya (ICGC).