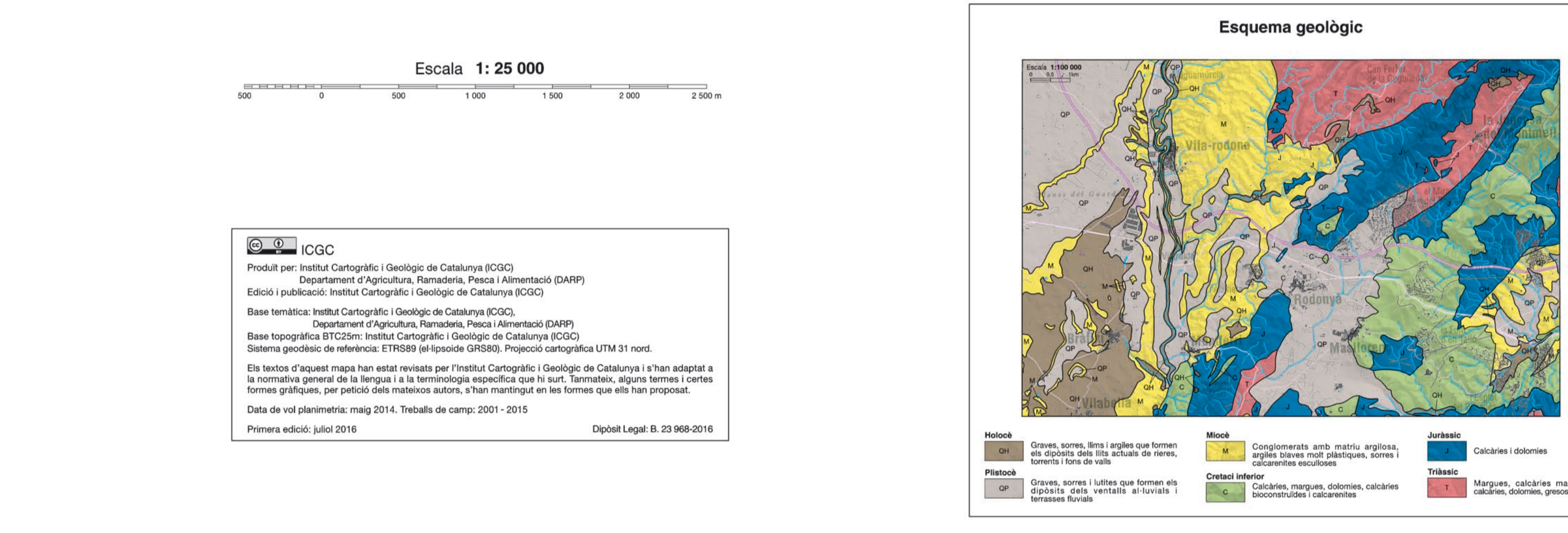
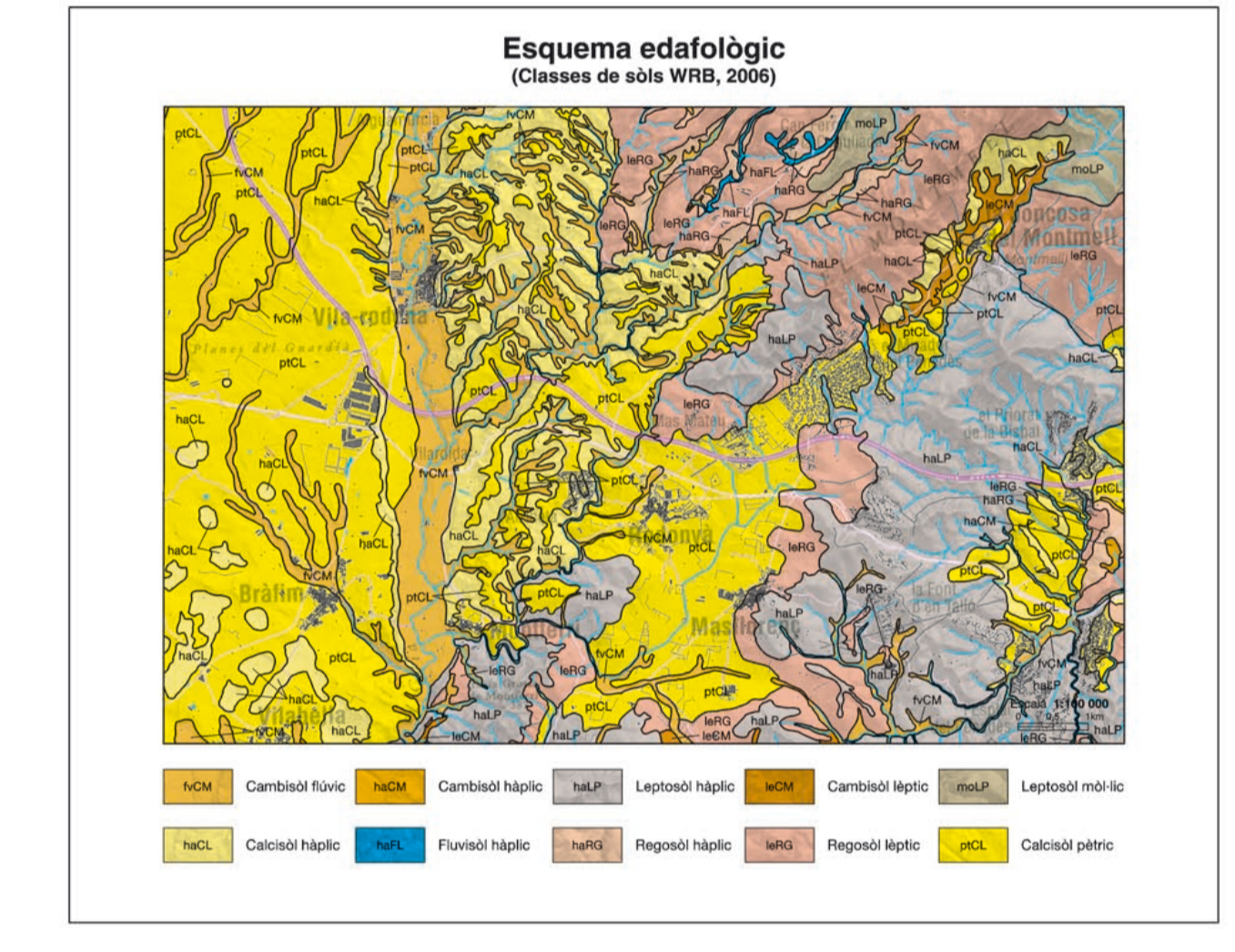


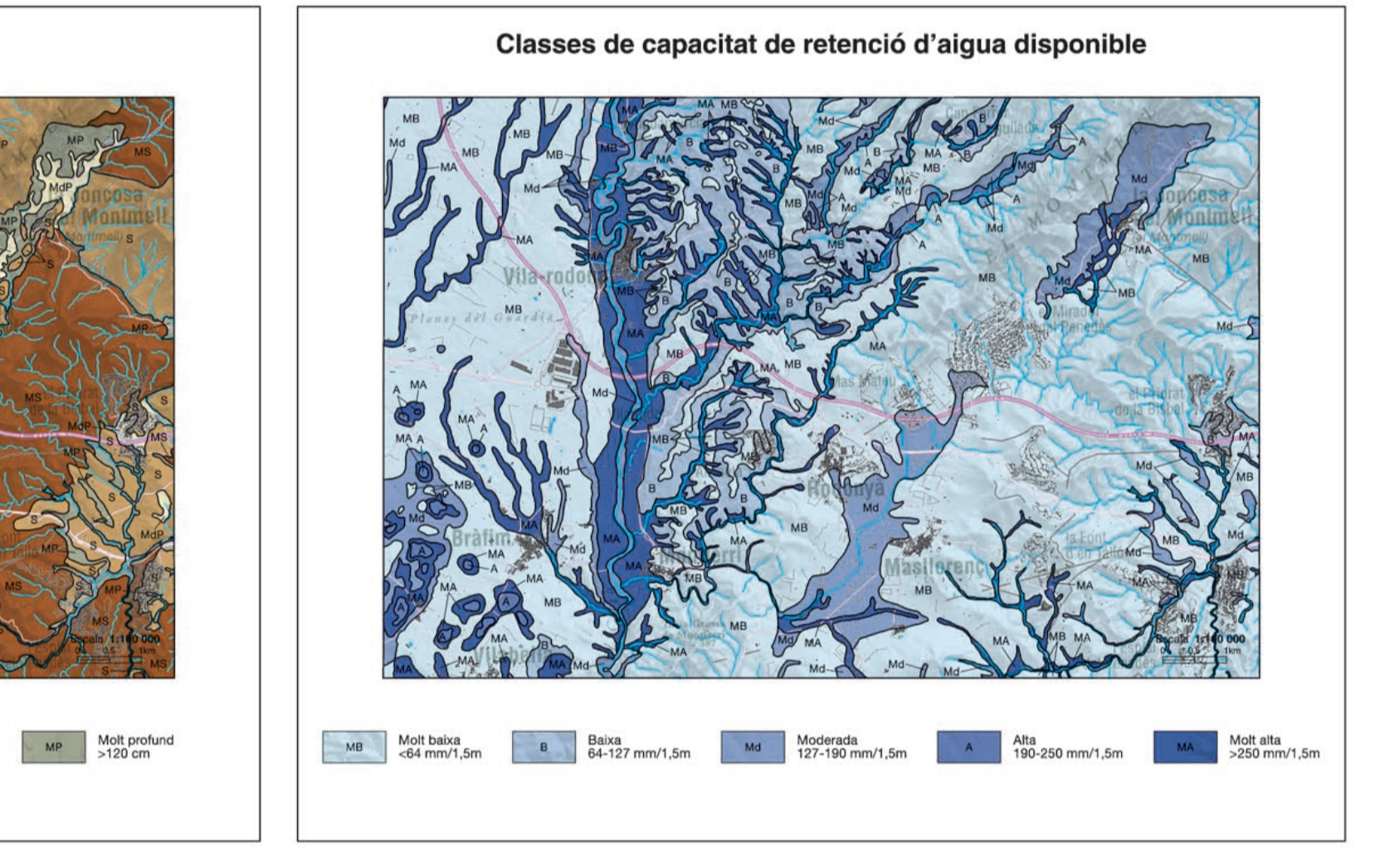
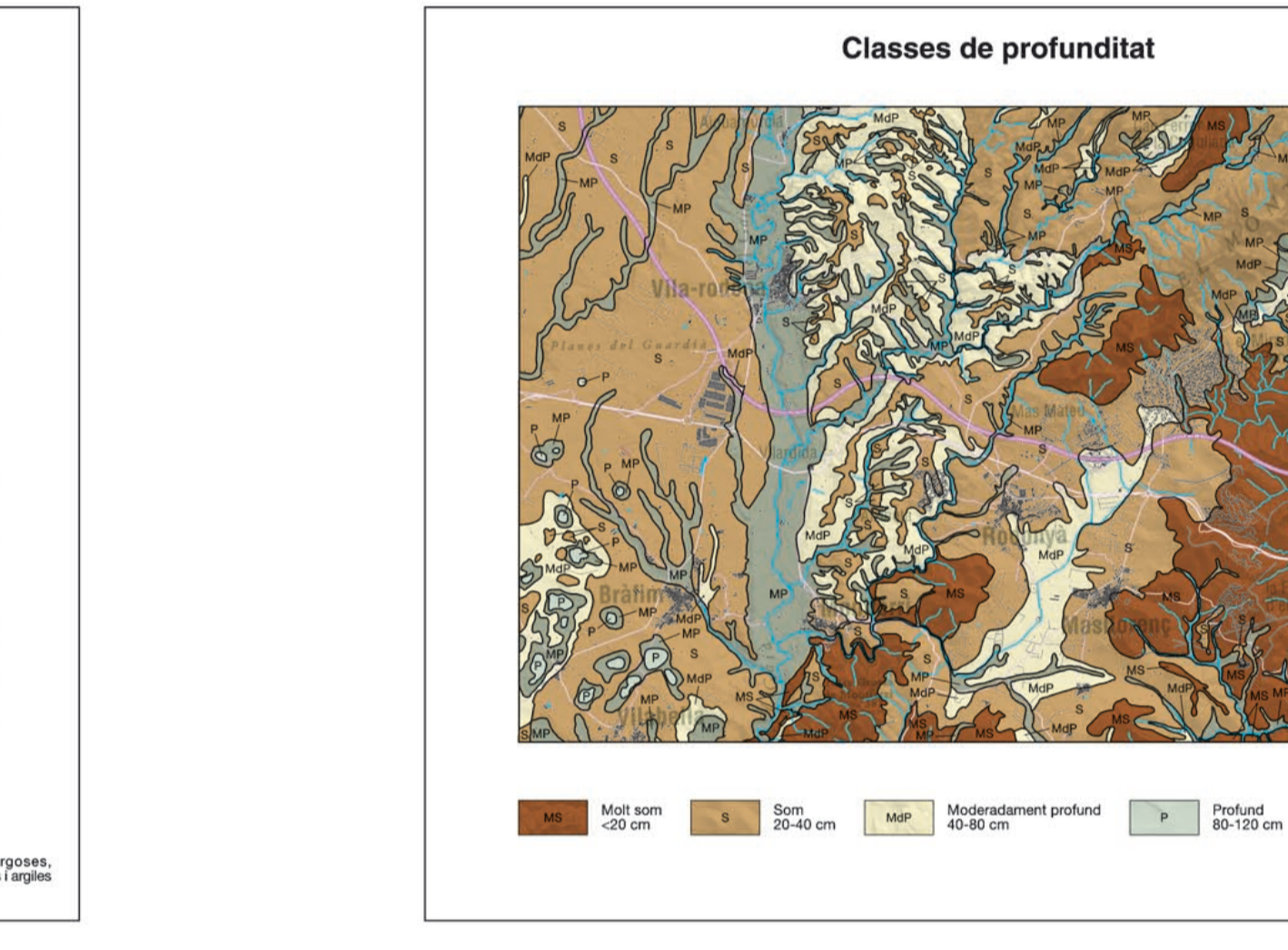
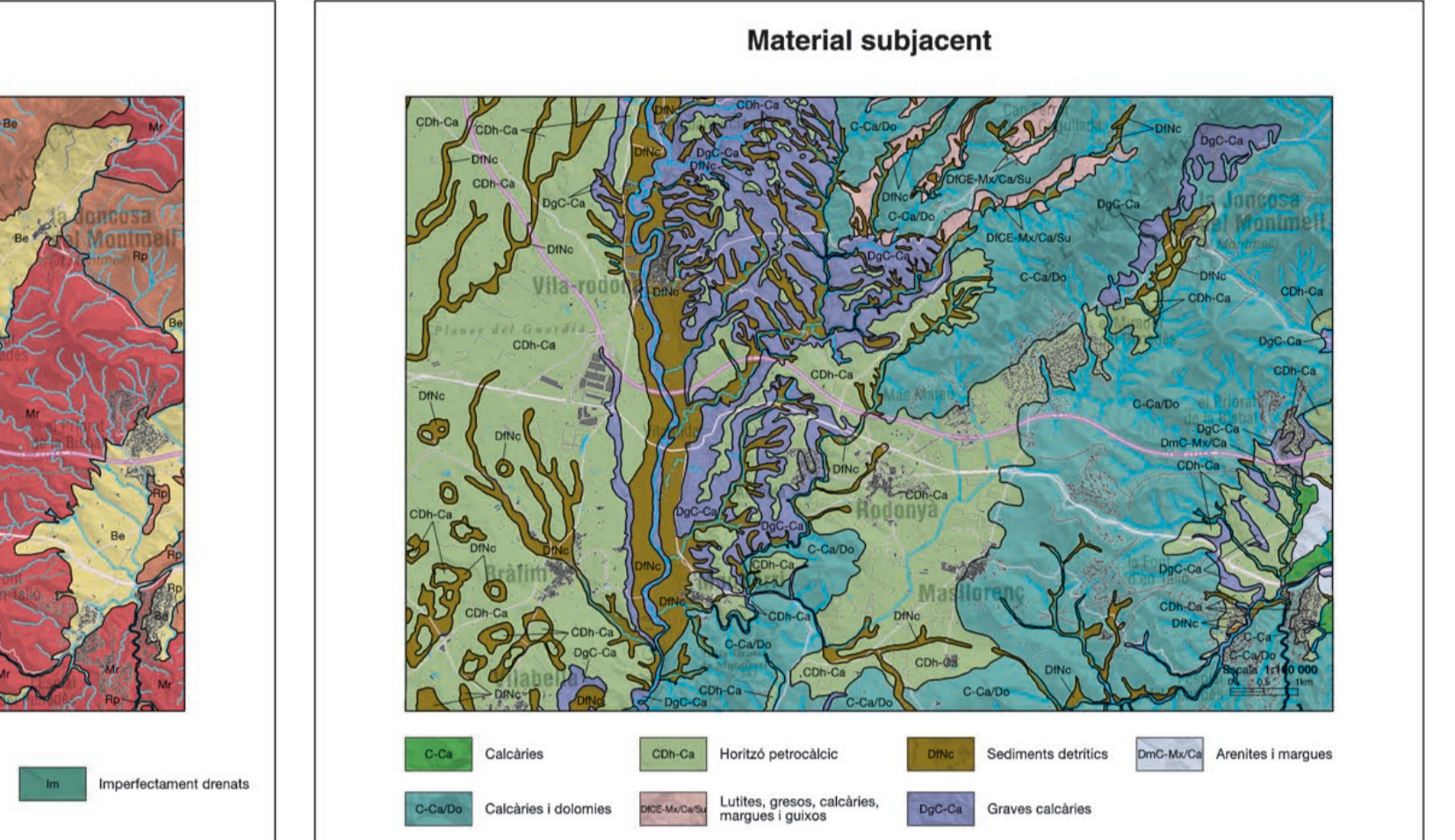
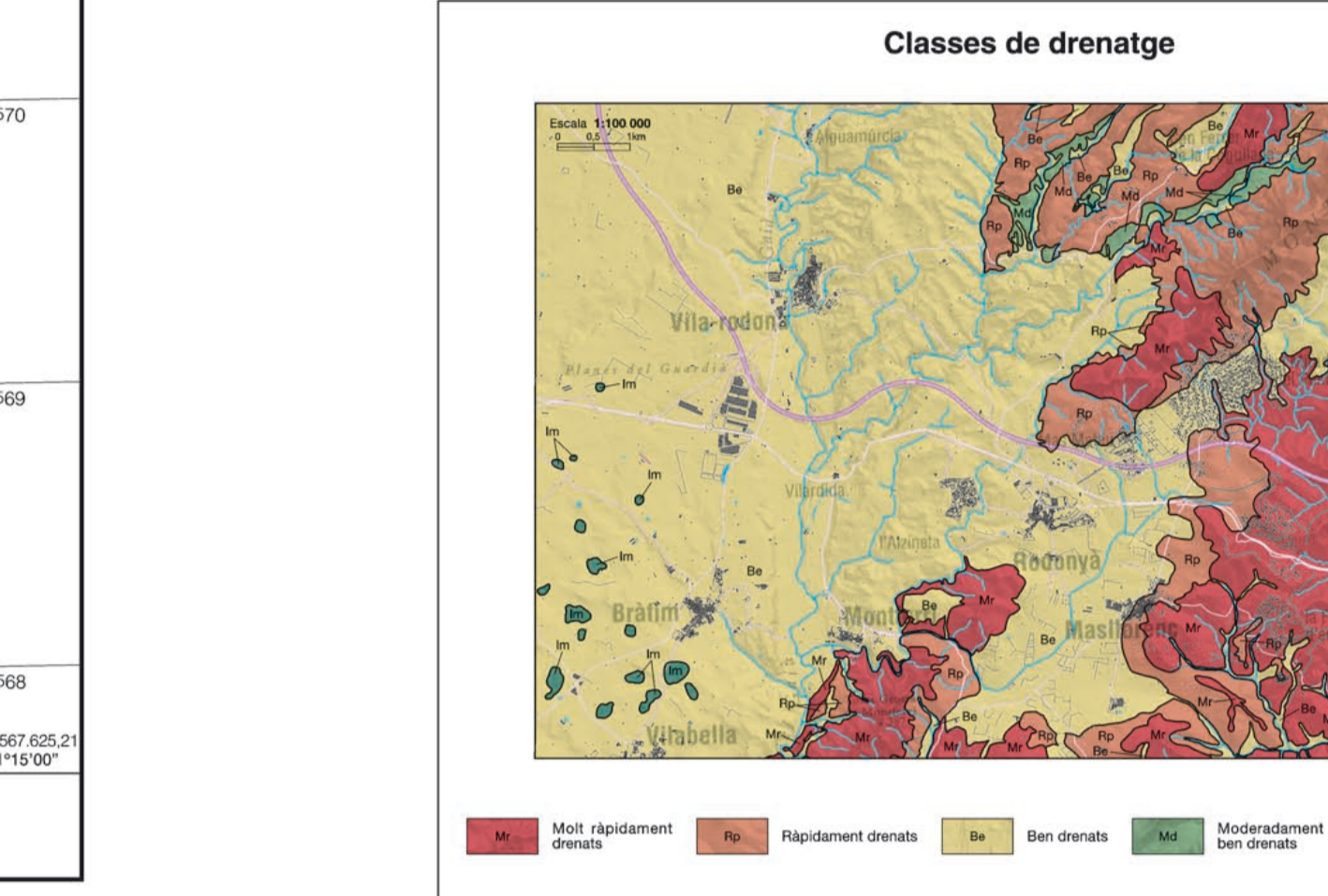
MOSTRA GRATUÏTA A BAIXA RESOLUCIÓ. Institut Cartogràfic i Geològic de Catalunya - www.icgc.cat, 2017. Fitxer digital georeferenciat GeoPDF en Sistema Geodèsic de Referència ETRS89 (al·lipsoida GRS90). Projecció cartogràfica UTM18 Nord.



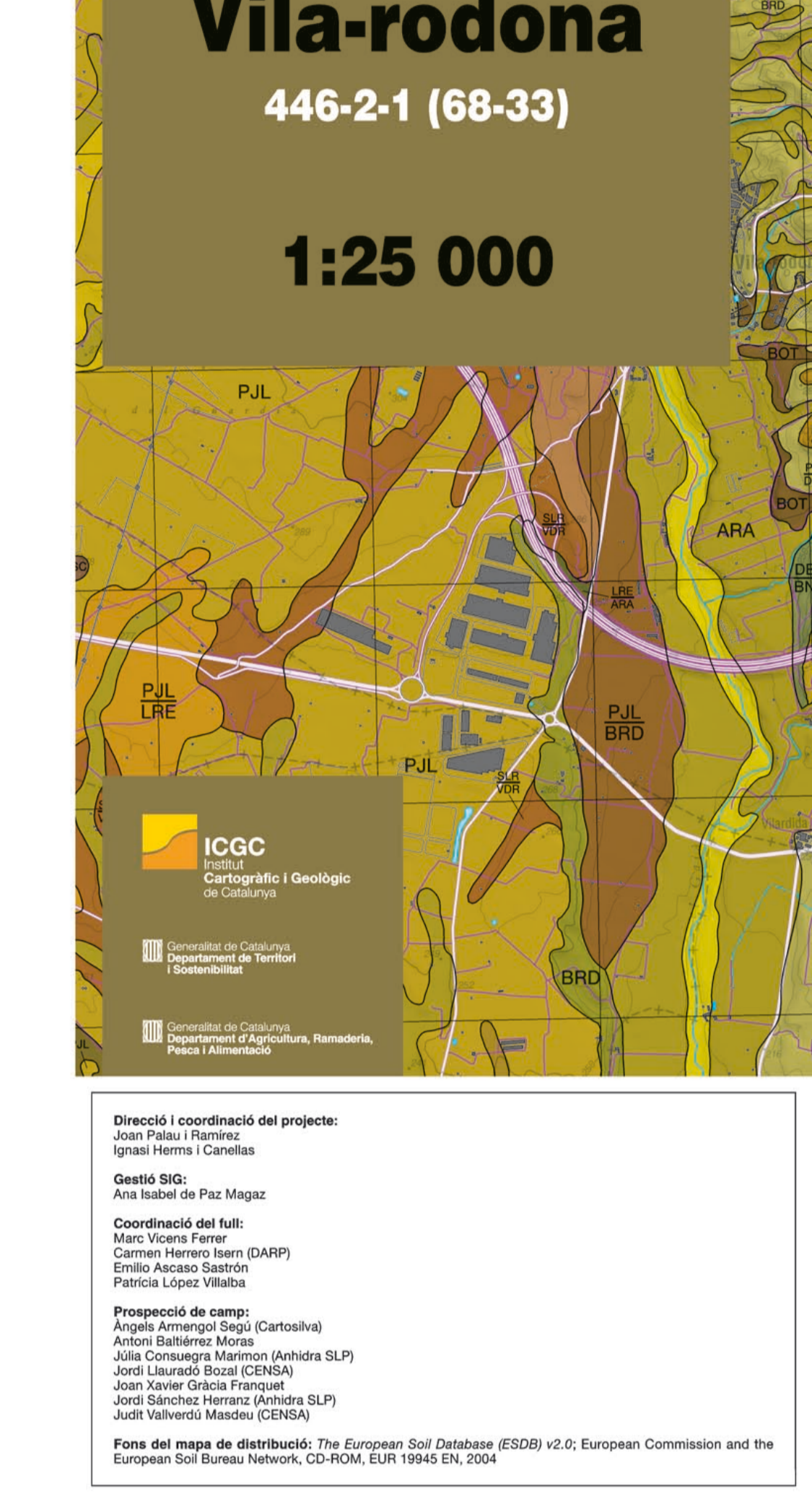
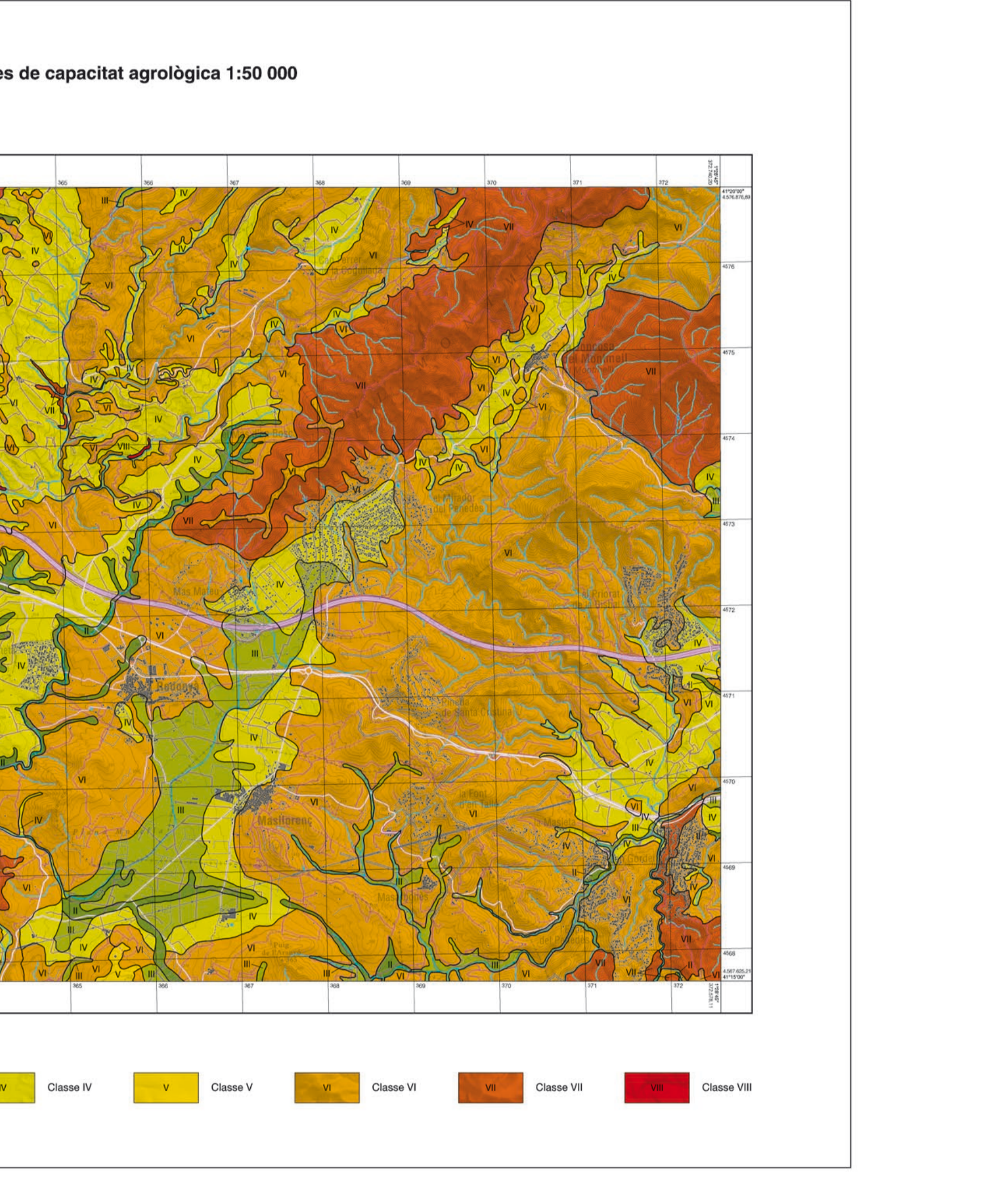
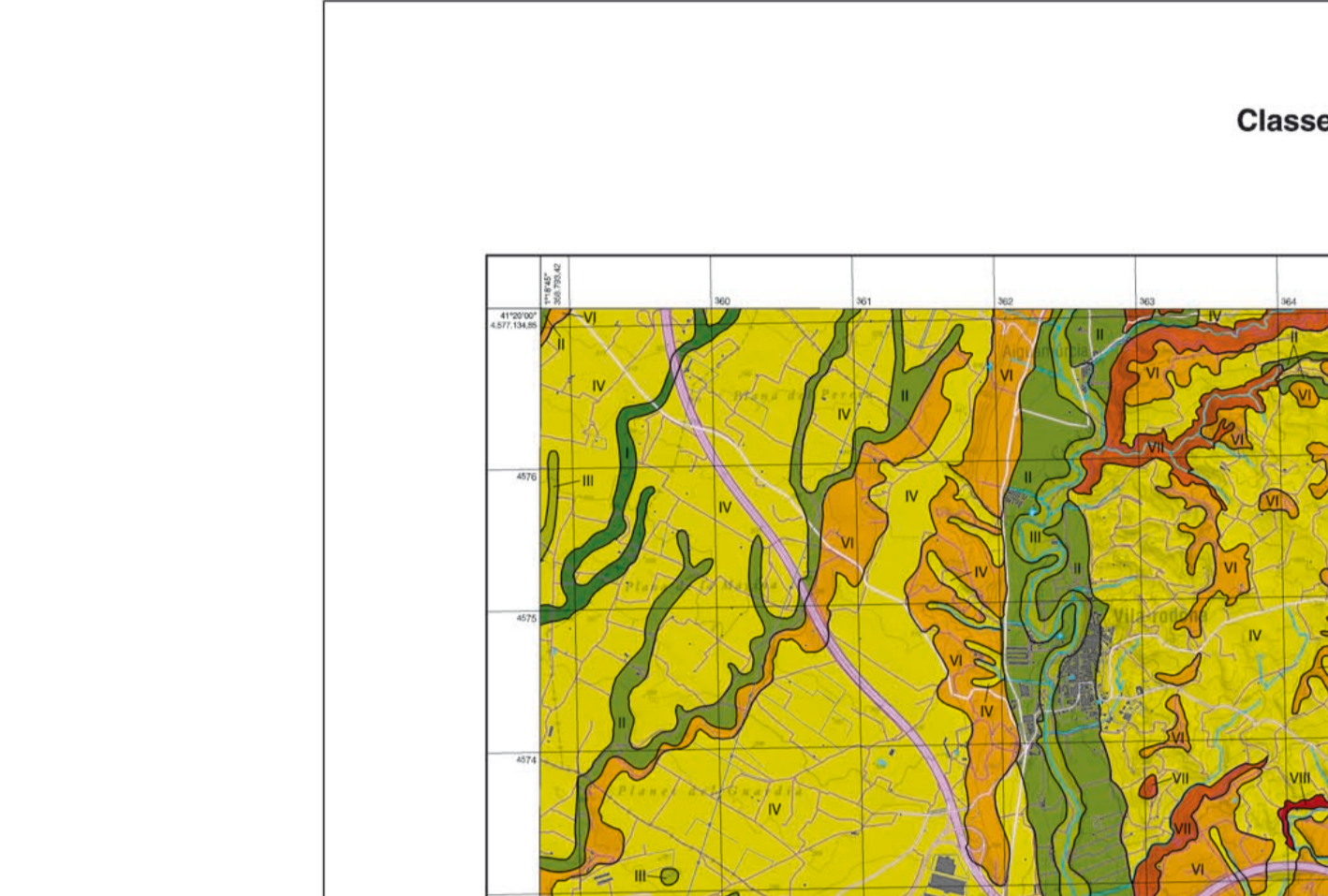
Resum metodològic: A summary table detailing the methodology used in the soil map, including classification systems (USDA, Zononemy, WRB, etc.), soil types, and data sources.

Tipus de sòls: A detailed table listing soil types (e.g., Arboet, Anyons, Bayeres, Botna, Cabrer, Cabrol, Cabanyes, Carterer, Campenans, Cofugats, Lledó, Llorens, Lliasset, Mallorent, Puigós, Rotes, Roges, Sòlers, Sobres, Somers, Vendell) with their corresponding soil codes and descriptions.

Legenda: Legend for soil units, showing the relationship between soil types and their corresponding symbols and colors on the map.



Legenda: Legend for soil units, showing the relationship between soil types and their corresponding symbols and colors on the map.



Propietats físiques dels sòls (Soil physical properties): A table listing physical properties such as bulk density, porosity, and water content for various soil types.

Organigrama i lenyag geodèsics (Geodetic organigram and dendrograms): Diagrams showing soil classification hierarchies and soil profiles.

Correlacions i sèries convencionals (Correlations and conventional series): A table showing correlations between soil types and conventional series, along with energy levels.