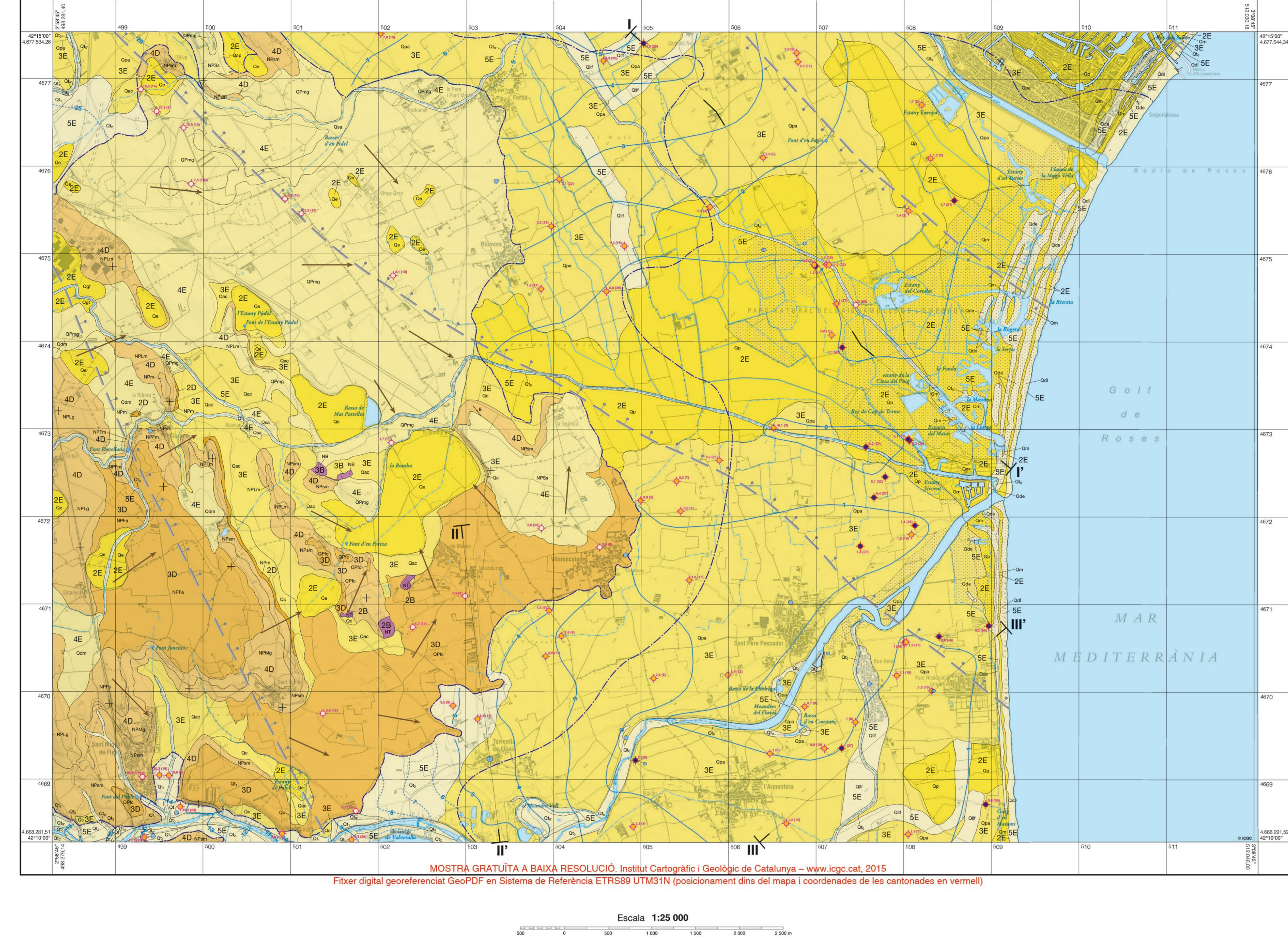


Mapa hidrogeològic 1:25 000

Sant Pere Pescador 258-2-2 (78-22)

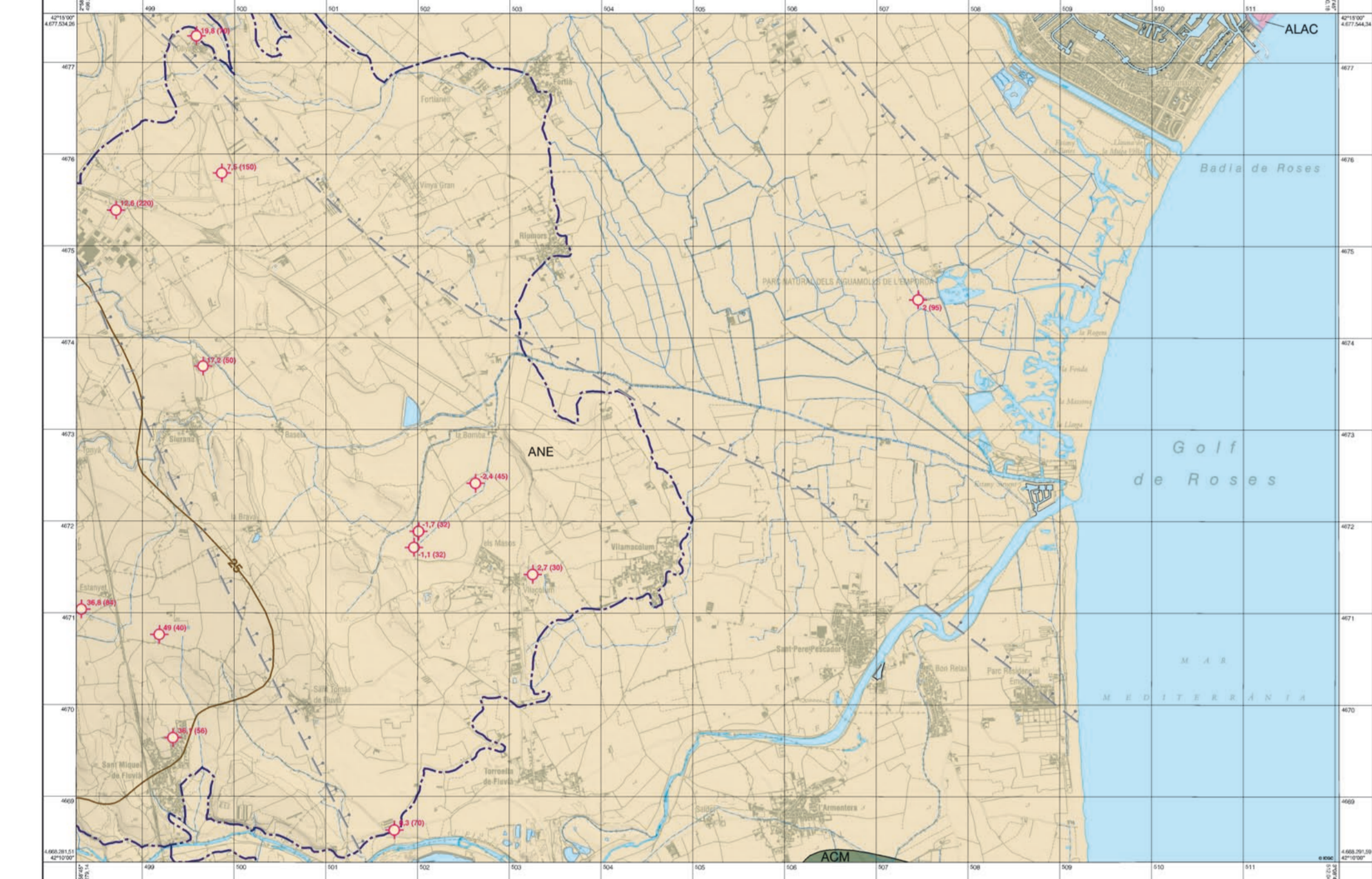


Legend (Llegenda) detailing geological units and their characteristics, including codes like SE, 4E, 3E, etc.

Legend (Llegenda) detailing hydrogeological units and their characteristics, including codes like 2E, 3E, 4E, etc.

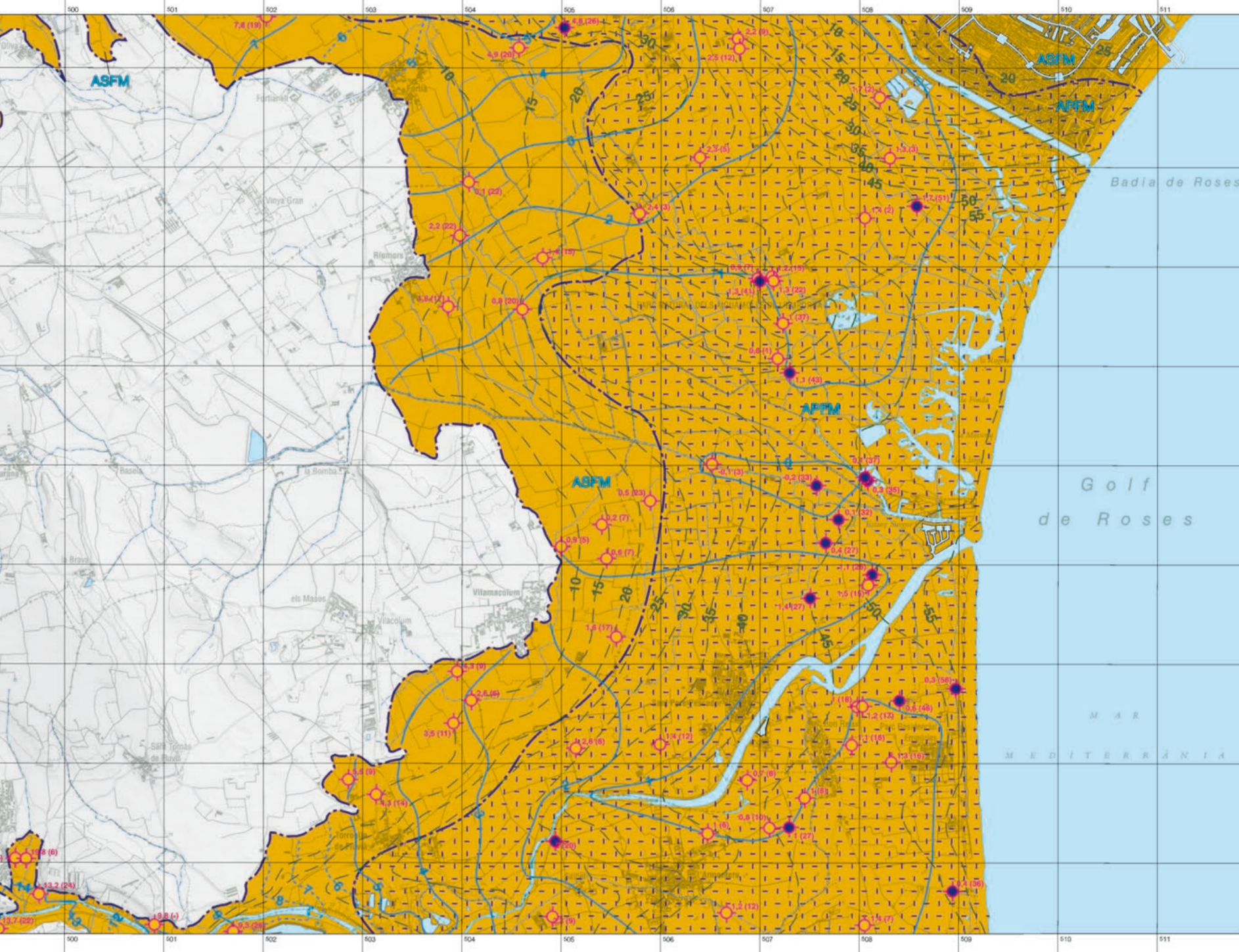
Geological map of Catalonia (Mapa geològic de Catalunya) at 1:25,000 scale, including a detailed view of Sant Pere Pescador.

Aqüífers en materials de basament 1:50 000



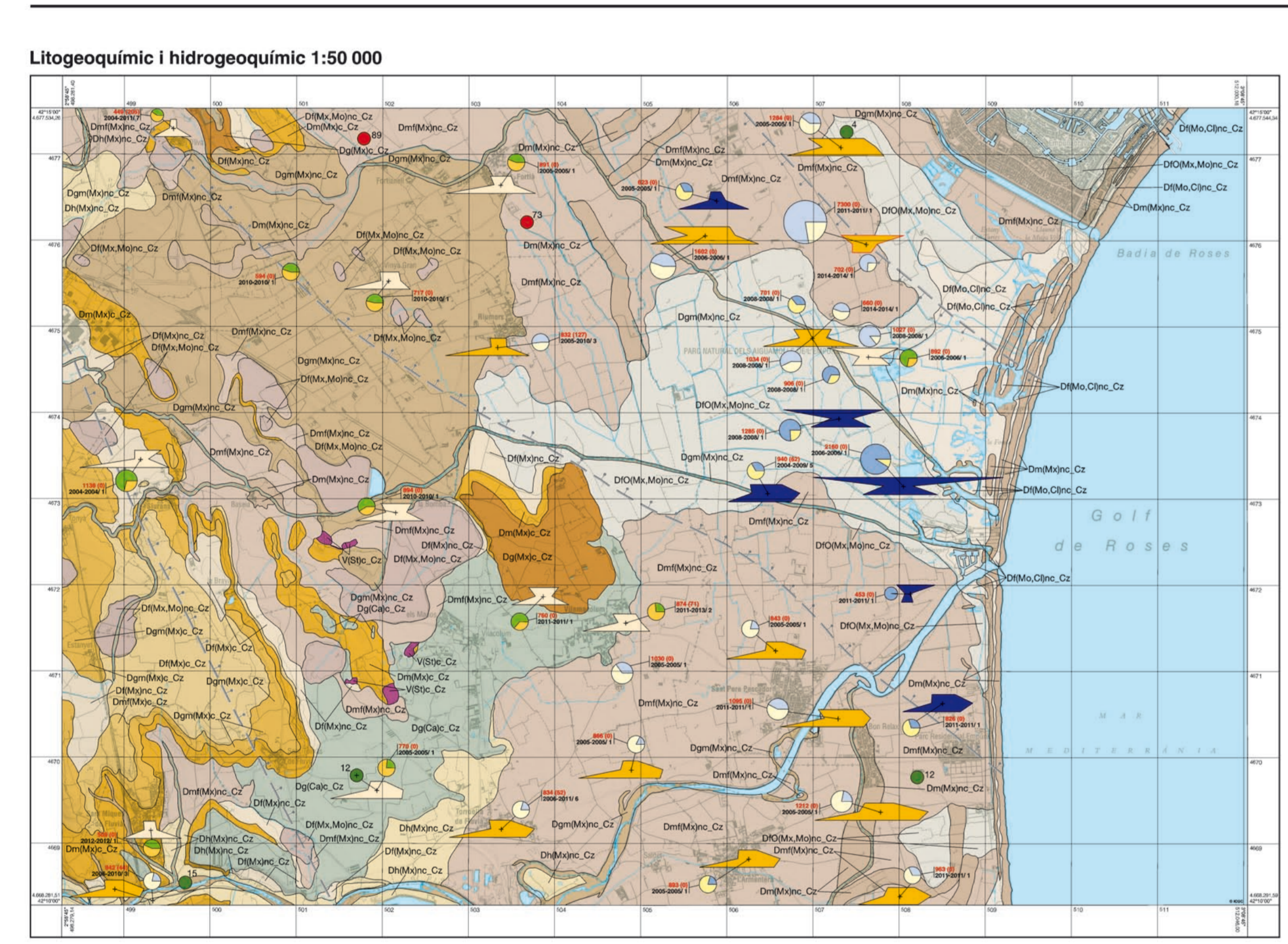
Legend and descriptive text for basement aquifers, including codes like ANE, 4E, 3E, 2E, 1E, etc.

Aqüífers en materials del quaternari 1:50 000



Legend and descriptive text for quaternary aquifers, including codes like 2E, 3E, 4E, etc.

Mapa hidrogeològic 1:25 000



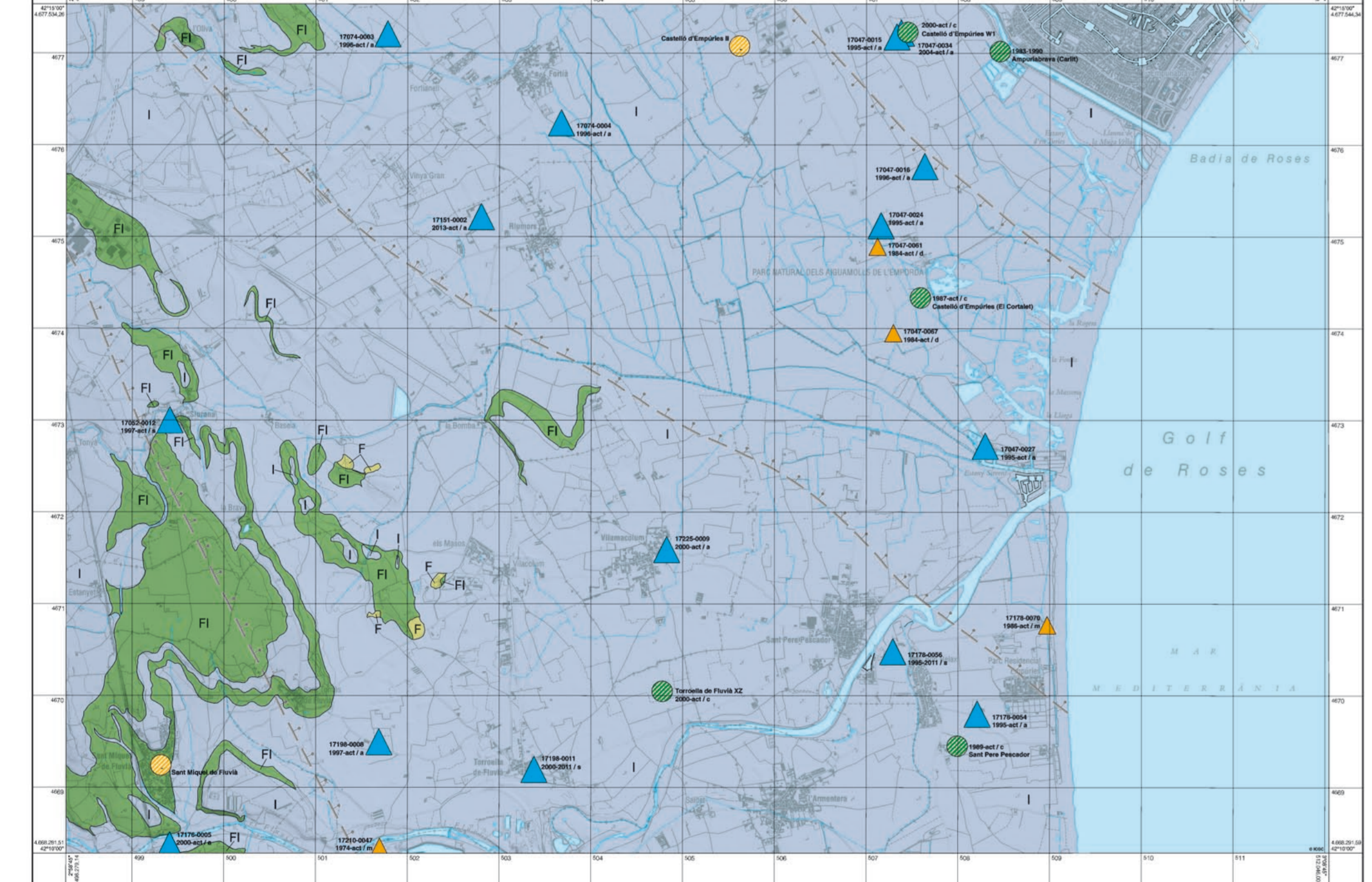
Legend and descriptive text for lithology and hydraulic conductivity, including codes like 2E, 3E, 4E, etc.

Mapa hidrogeològic 1:25 000



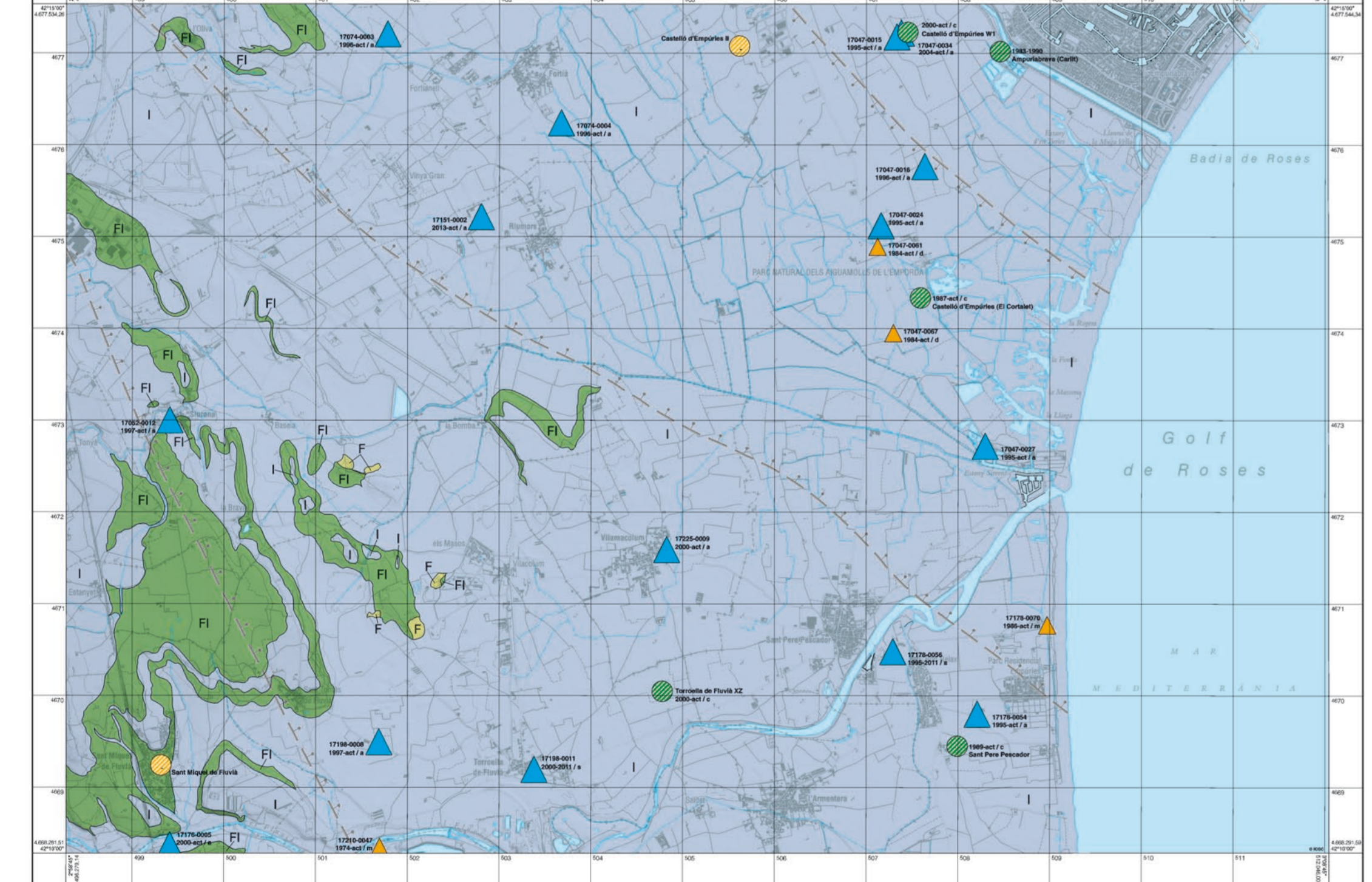
Legend and descriptive text for meteorological evolution and piezometric levels, including codes like 2E, 3E, 4E, etc.

Porositat i xarxes de control 1:50 000



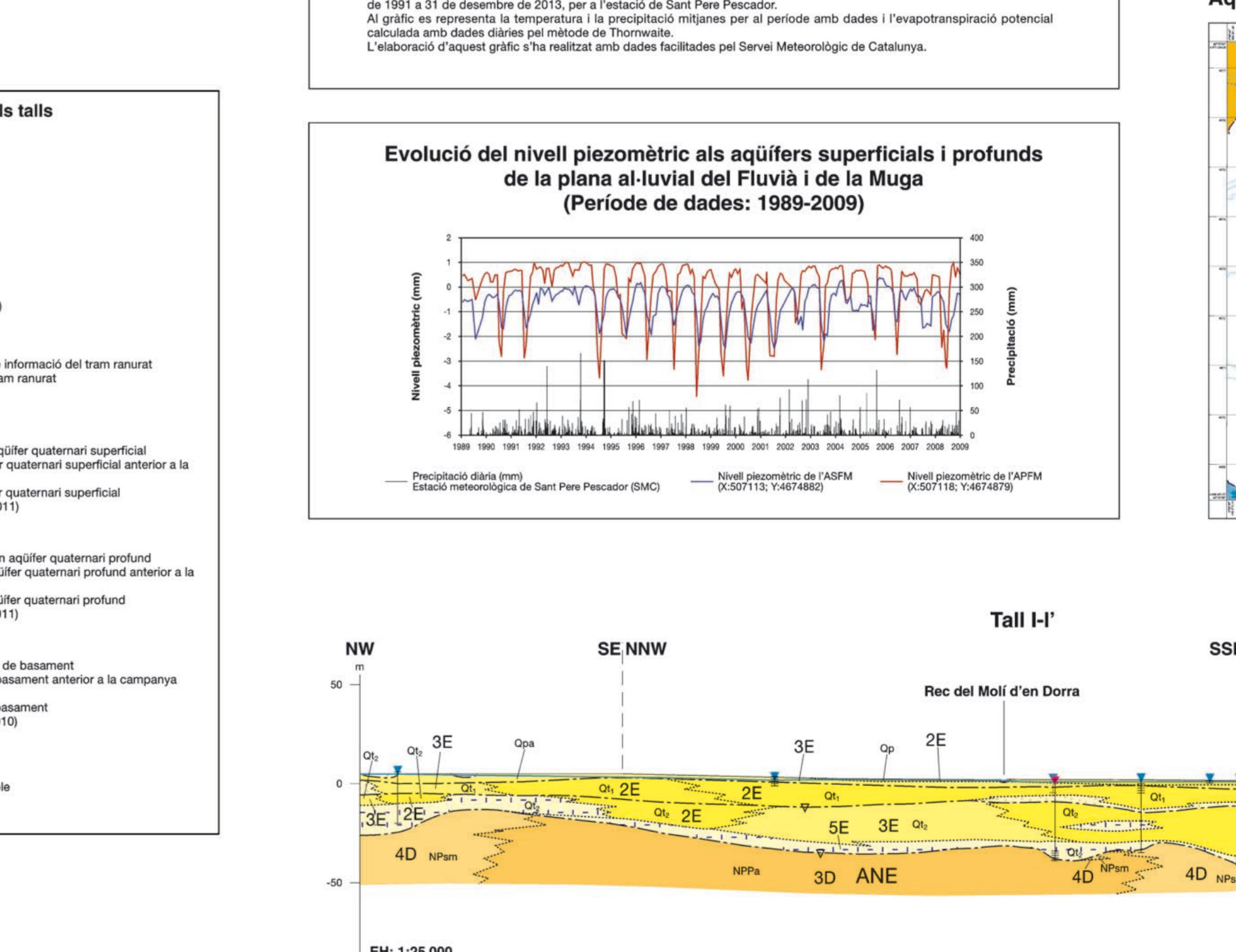
Legend and descriptive text for porosity and control networks, including codes like 2E, 3E, 4E, etc.

Vulnerabilitat (DRASTIC) 1:100 000



Legend and descriptive text for vulnerability (DRASTIC) at 1:100,000 scale, including codes like 2E, 3E, 4E, etc.

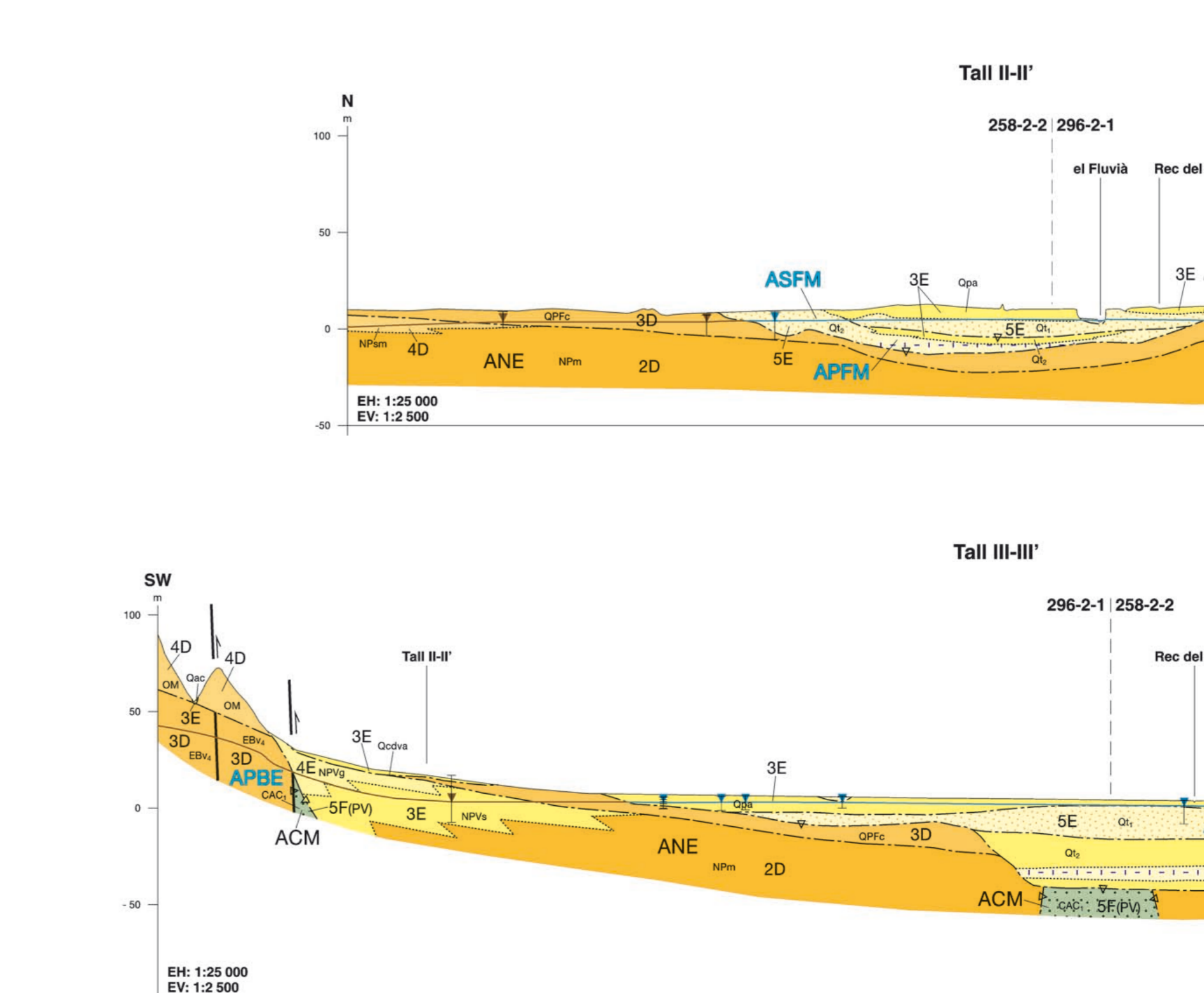
Vulnerabilitat (DRASTIC) 1:100 000



Legend and descriptive text for vulnerability (DRASTIC) at 1:100,000 scale, including codes like 2E, 3E, 4E, etc.

DRASTIC index calculation table and descriptive text for vulnerability assessment.

Legend for lithology and piezometric levels, including codes like 2E, 3E, 4E, etc.



Legend and descriptive text for piezometric levels, including codes like 2E, 3E, 4E, etc.