

MOSTRA GRATUITA A BAIXA RESOLUCIÓ. Institut Cartogràfic i Geològic de Catalunya - www.icgc.cat, 2017

Fixador digital georeferenciat GeoPDF en Sistema Geodèsic de Referència ETRS89 (el·lipsoide GHS80). Projecció cartogràfica UTM31 nord

Escala 1: 25 000

Legenda: Symbols and descriptions for geological units, hydrogeological units, and topographic features.

Signes convencionals: Conventional symbols for contour lines, faults, and other geological features.

Litologia / Permeabilitat: Table showing permeability values for various geological units.

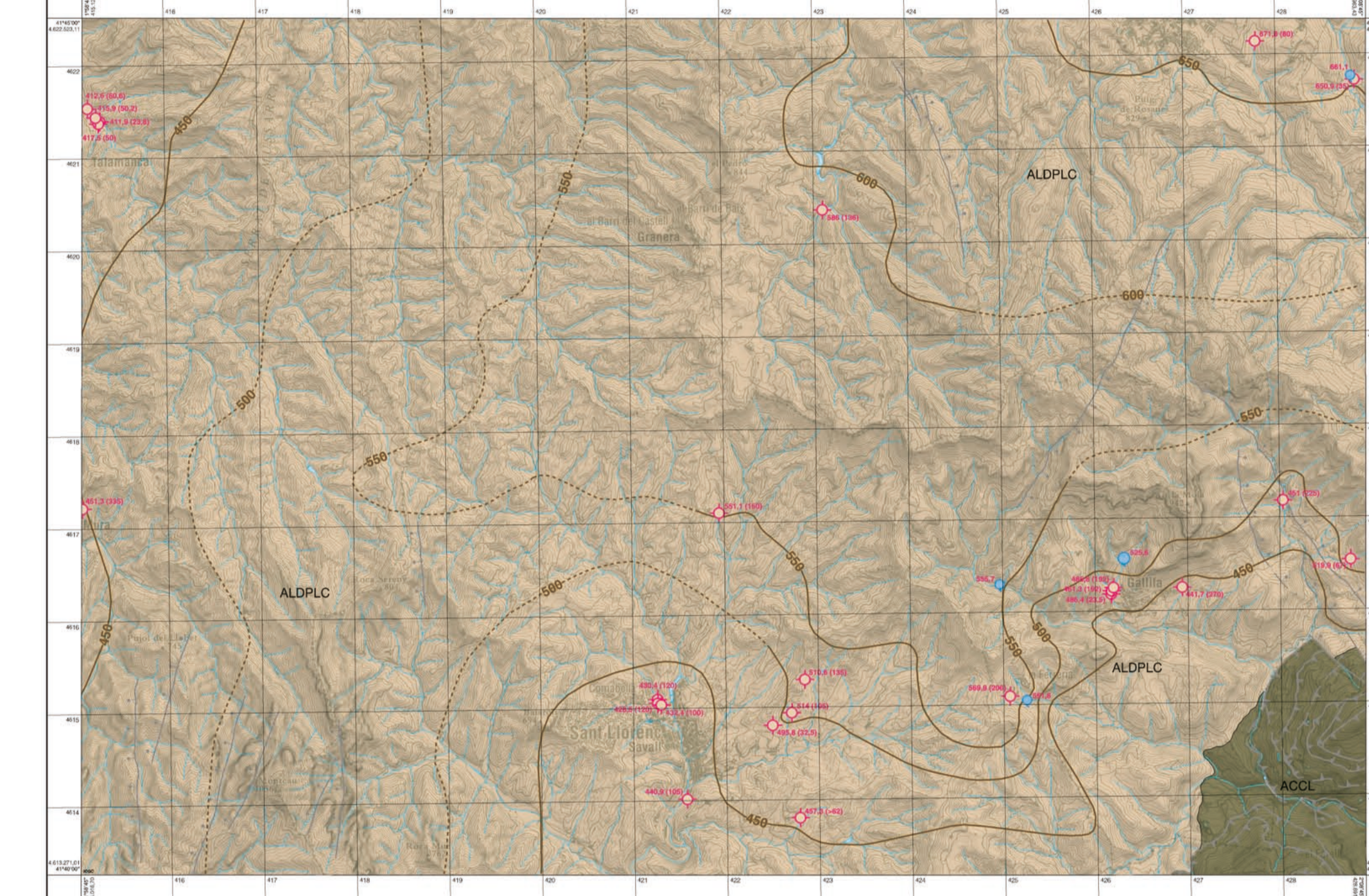
El contingut del Mapa hidrogeològic de Catalunya s'estructura en tres grups d'informació: propietats hidrogeològiques del medi, qualitat de les aigües.



Mapa geològic de Catalunya Geotèrral V. Mapa hidrogeològic Sant Llorenç Savall 363-2-2 (72-28) 1:25 000

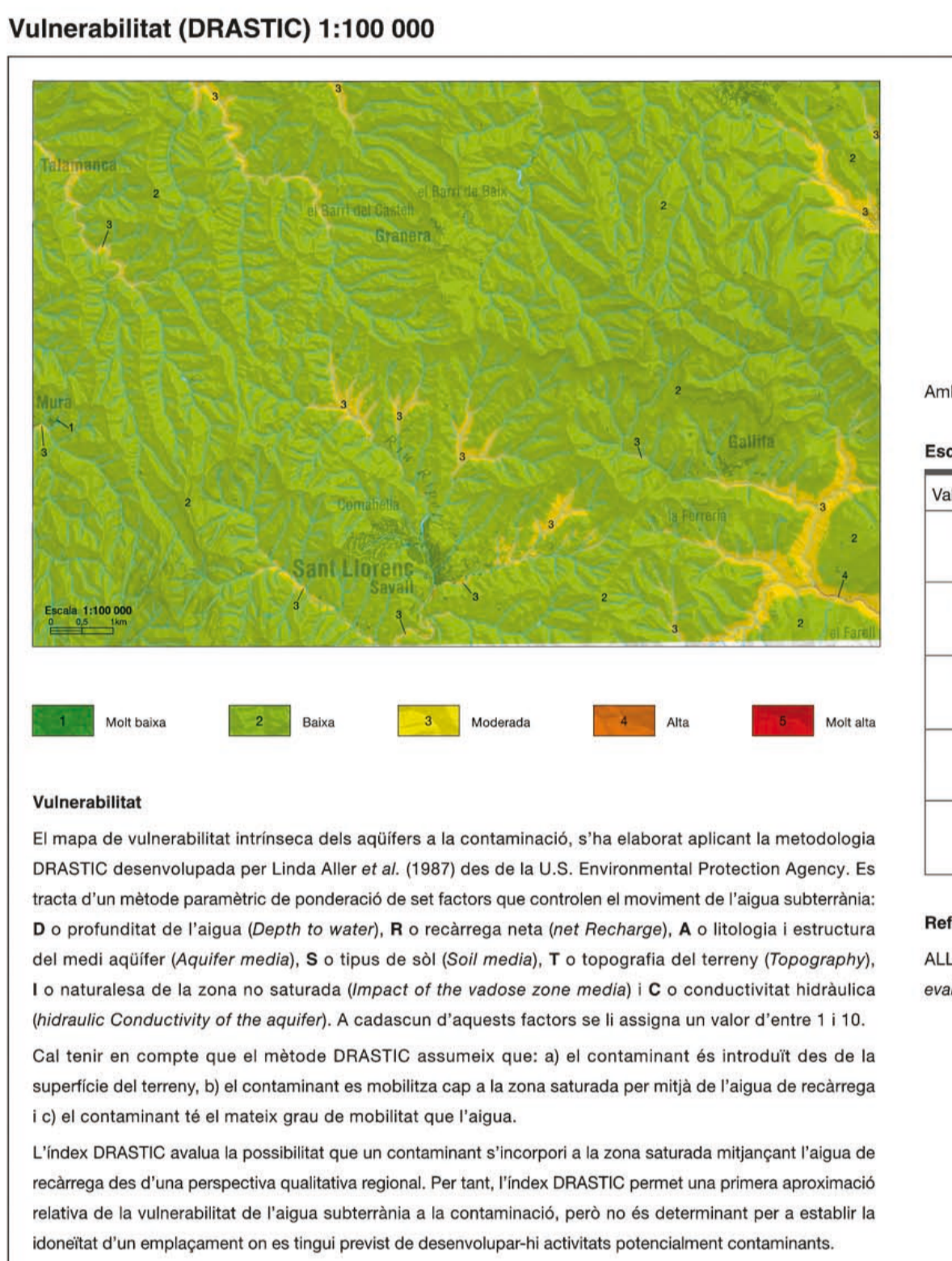
Mapa geològic de Catalunya Geotèrral V. Mapa hidrogeològic Sant Llorenç Savall 363-2-2 (72-28) 1:25 000. Includes project details and contact information.

Aqüífers en materials del basament 1:50 000



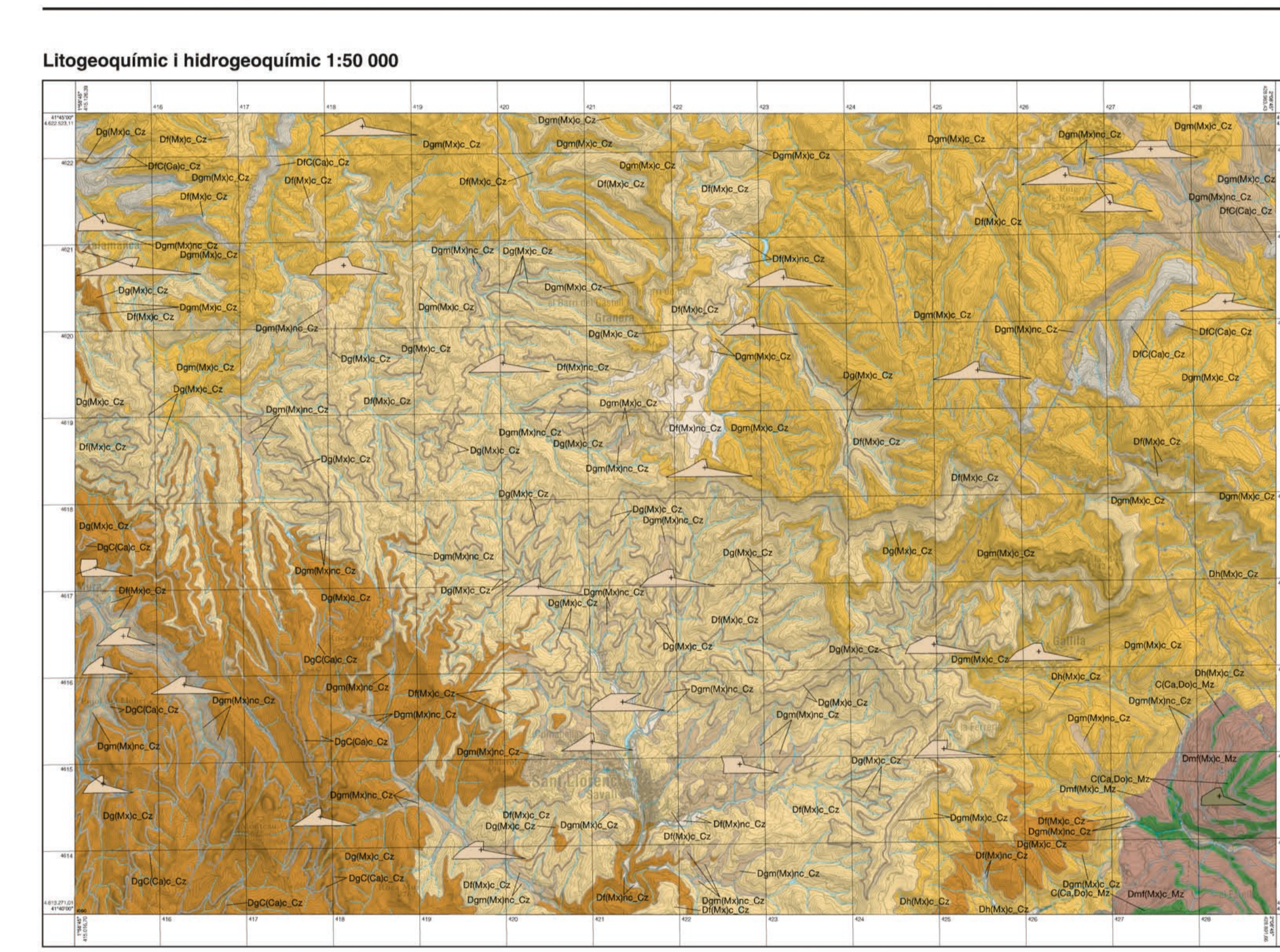
Legenda: Legend for basement aquifers, including symbols for different aquifer types and their characteristics.

Signes convencionals dels aqüífers: Conventional symbols for aquifers, including symbols for different aquifer types and their characteristics.

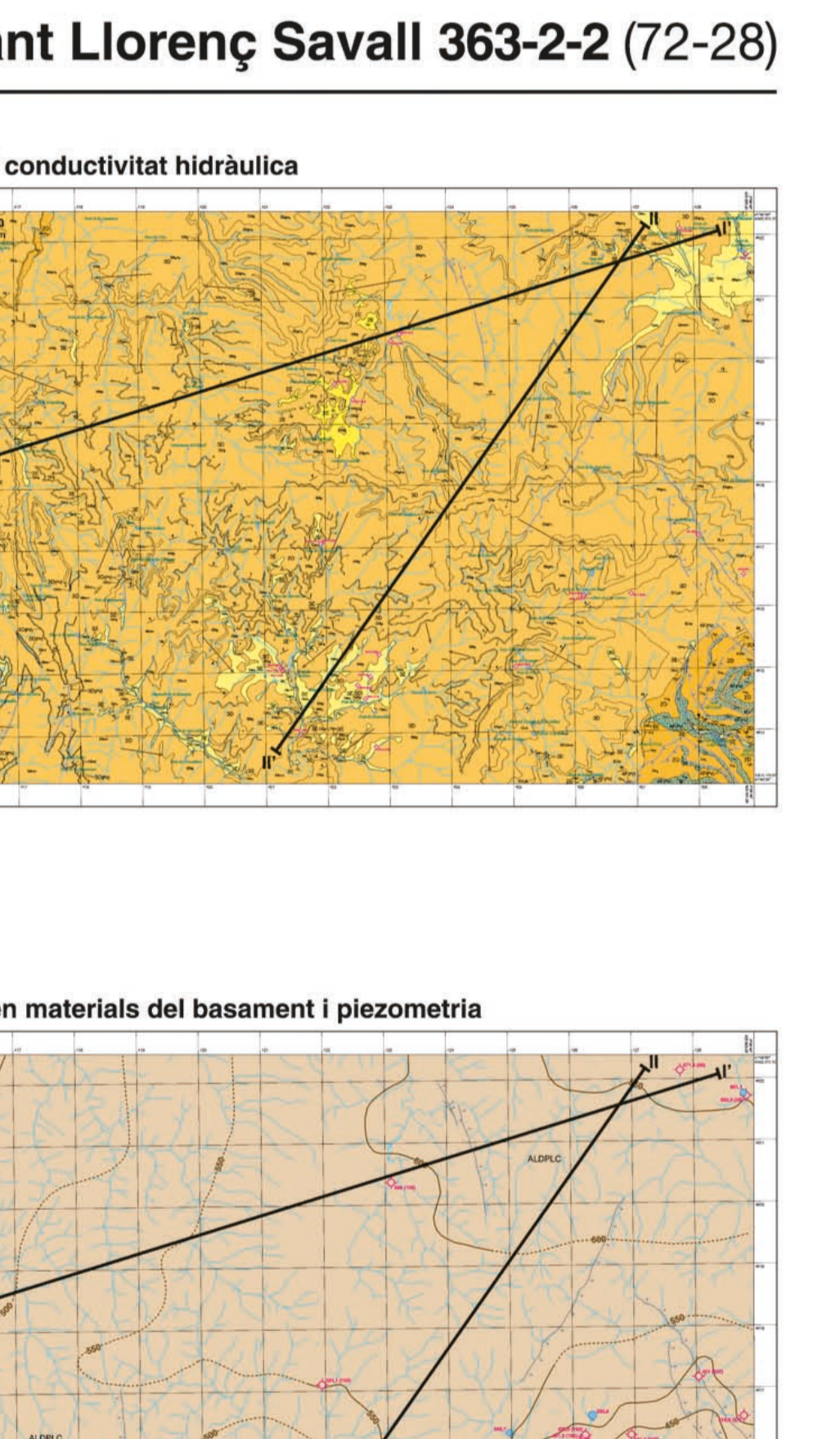
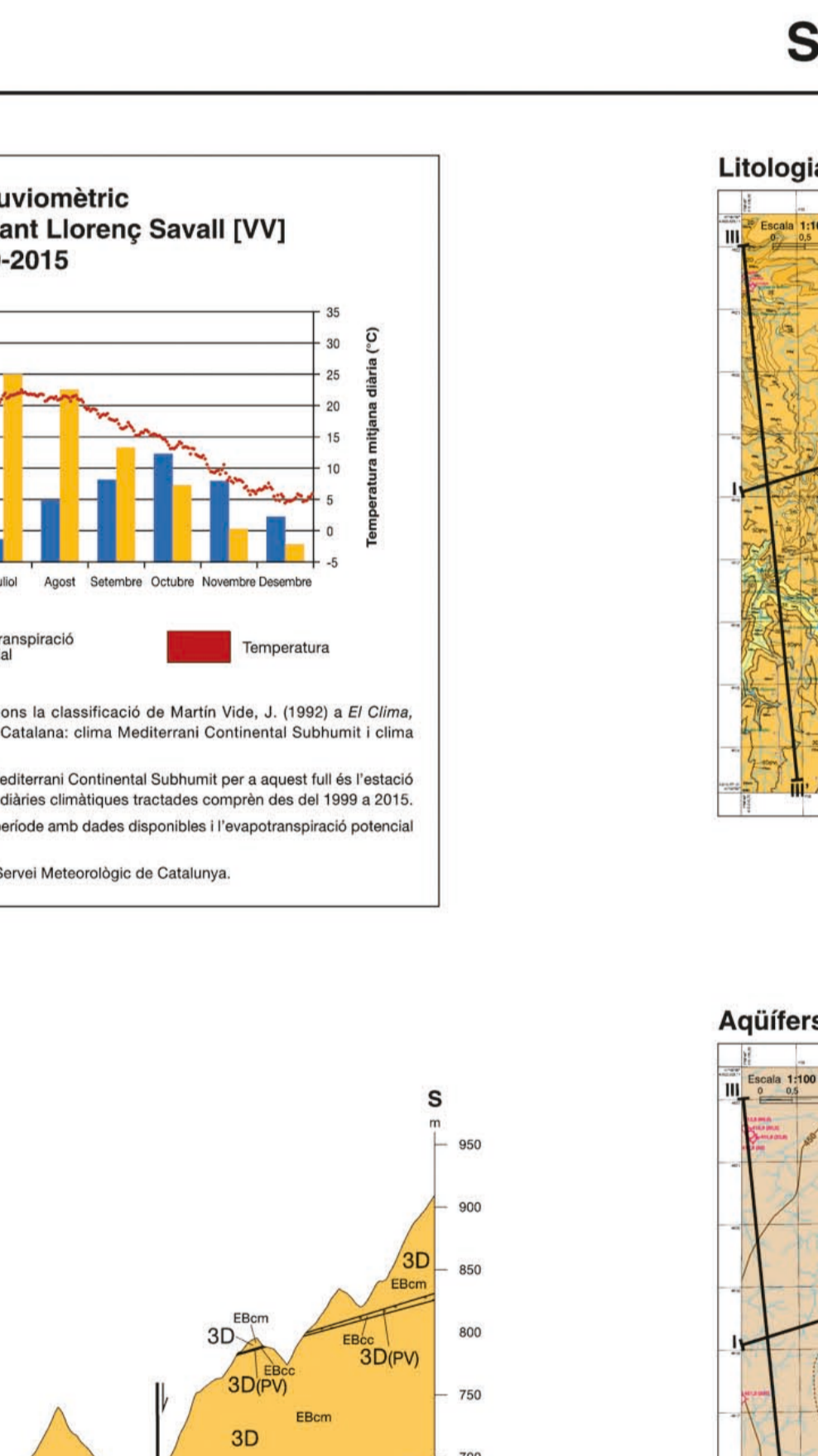
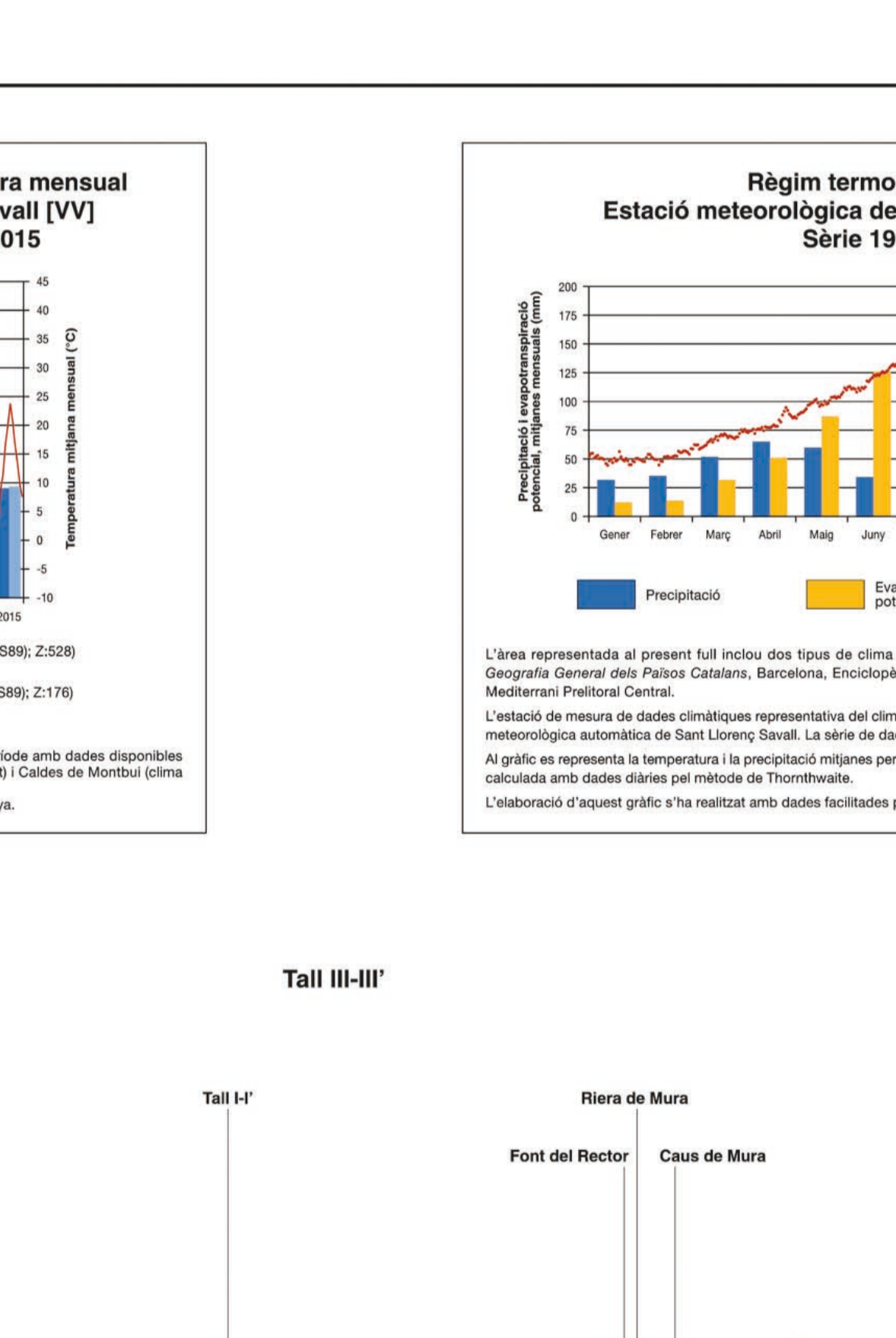
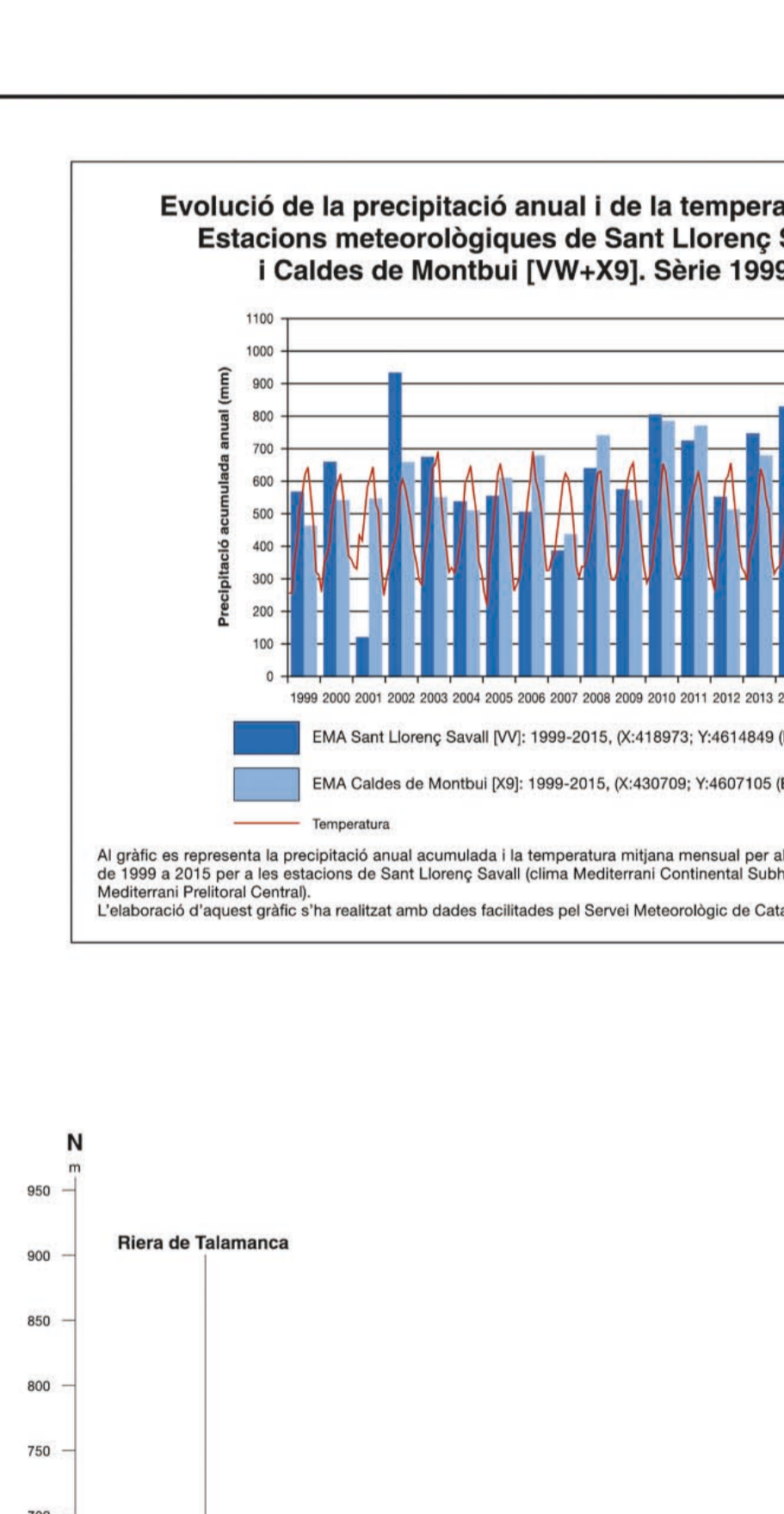


Vulnerabilitat (DRASTIC) 1:100 000: Detailed explanation of the DRASTIC vulnerability index, including the formula and the meaning of the different levels.

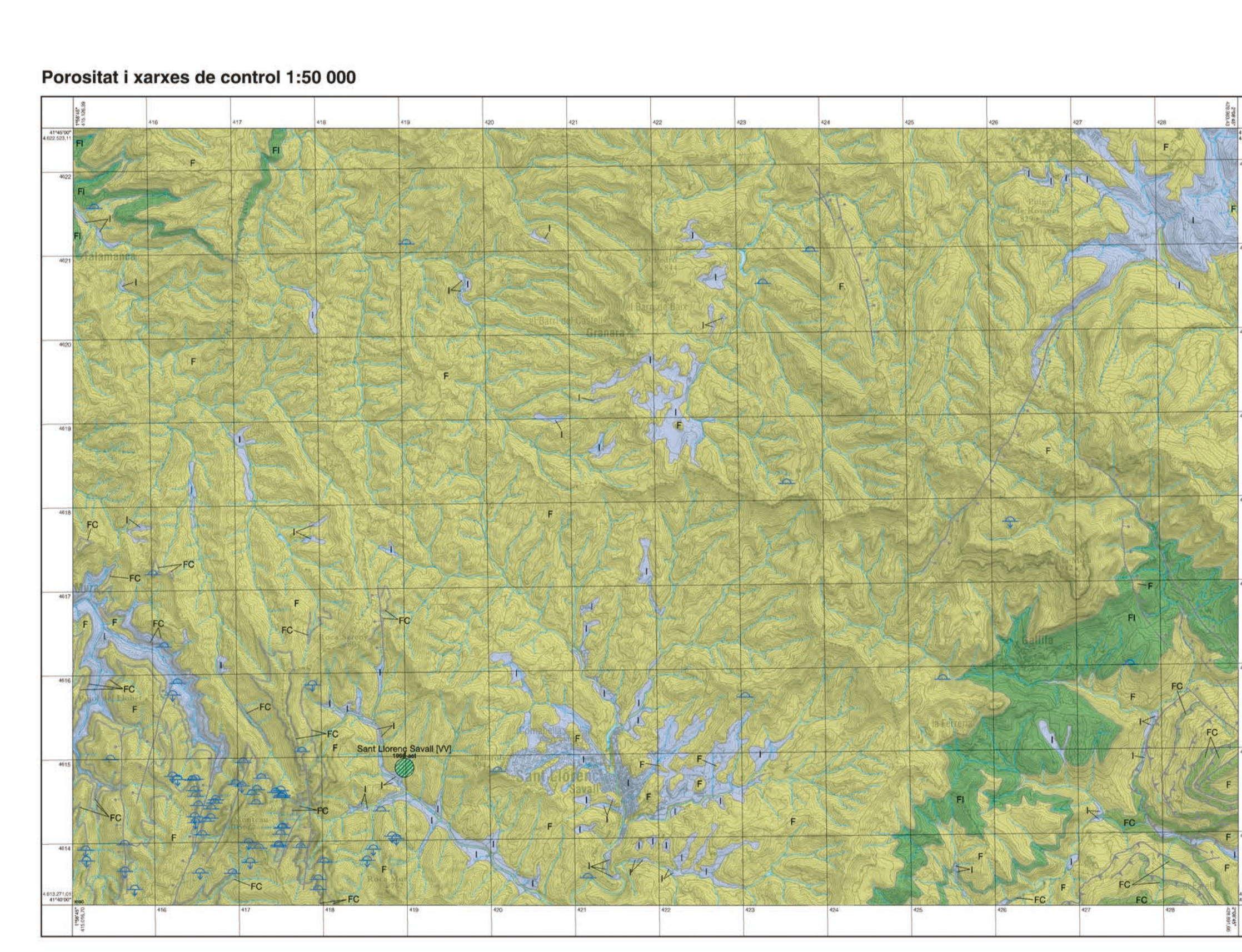
Mapa hidrogeològic 1:25 000



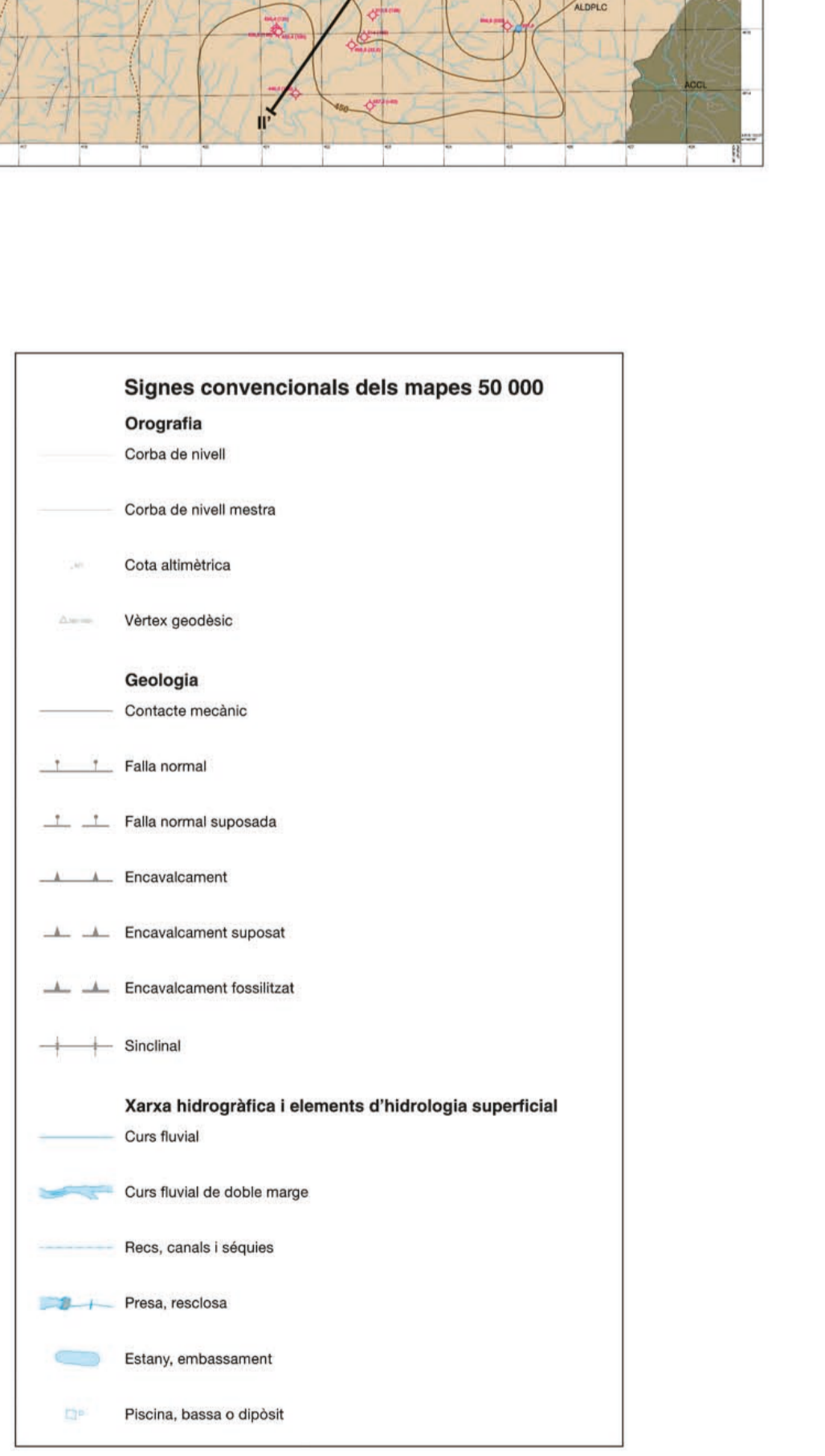
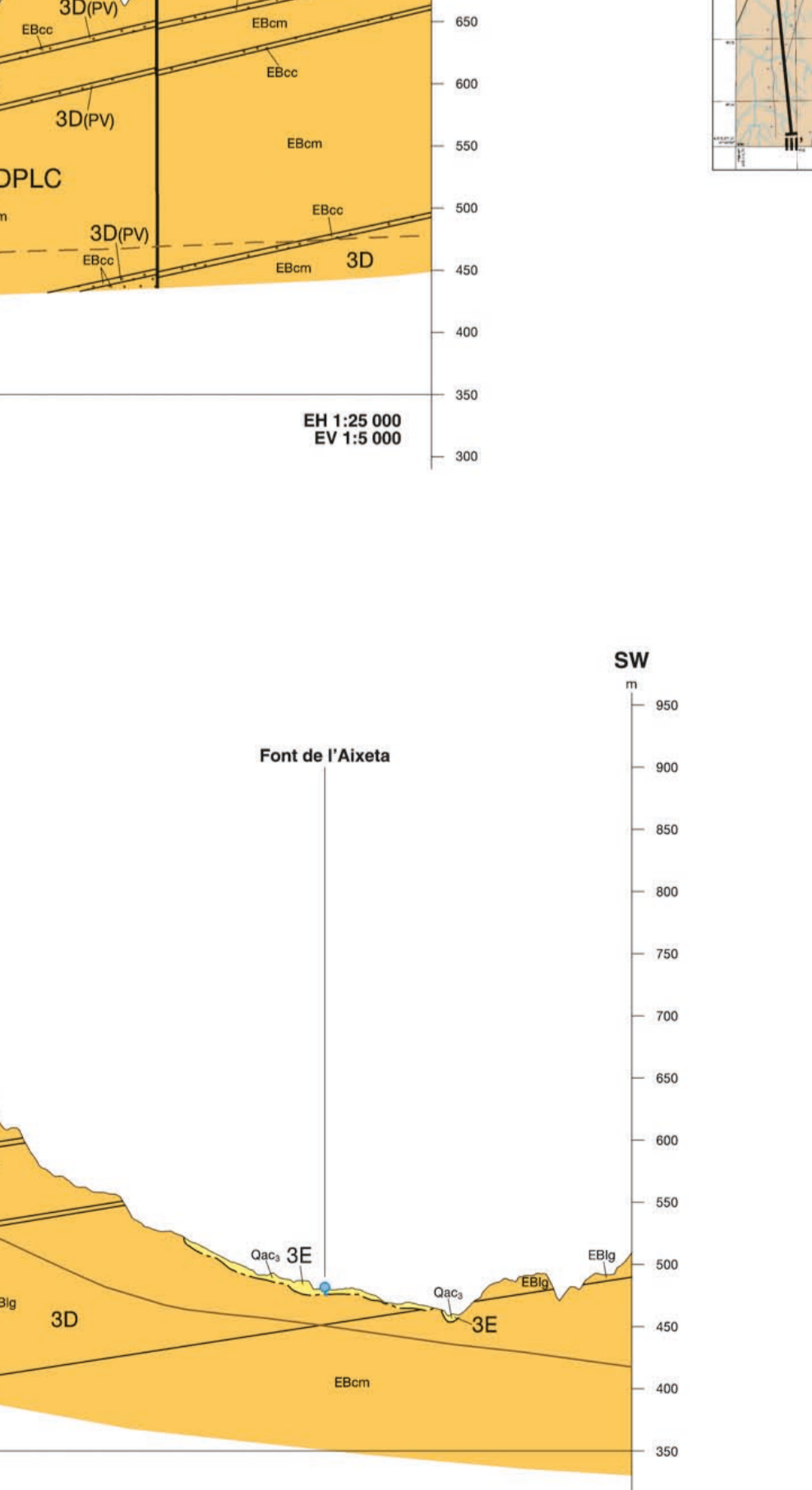
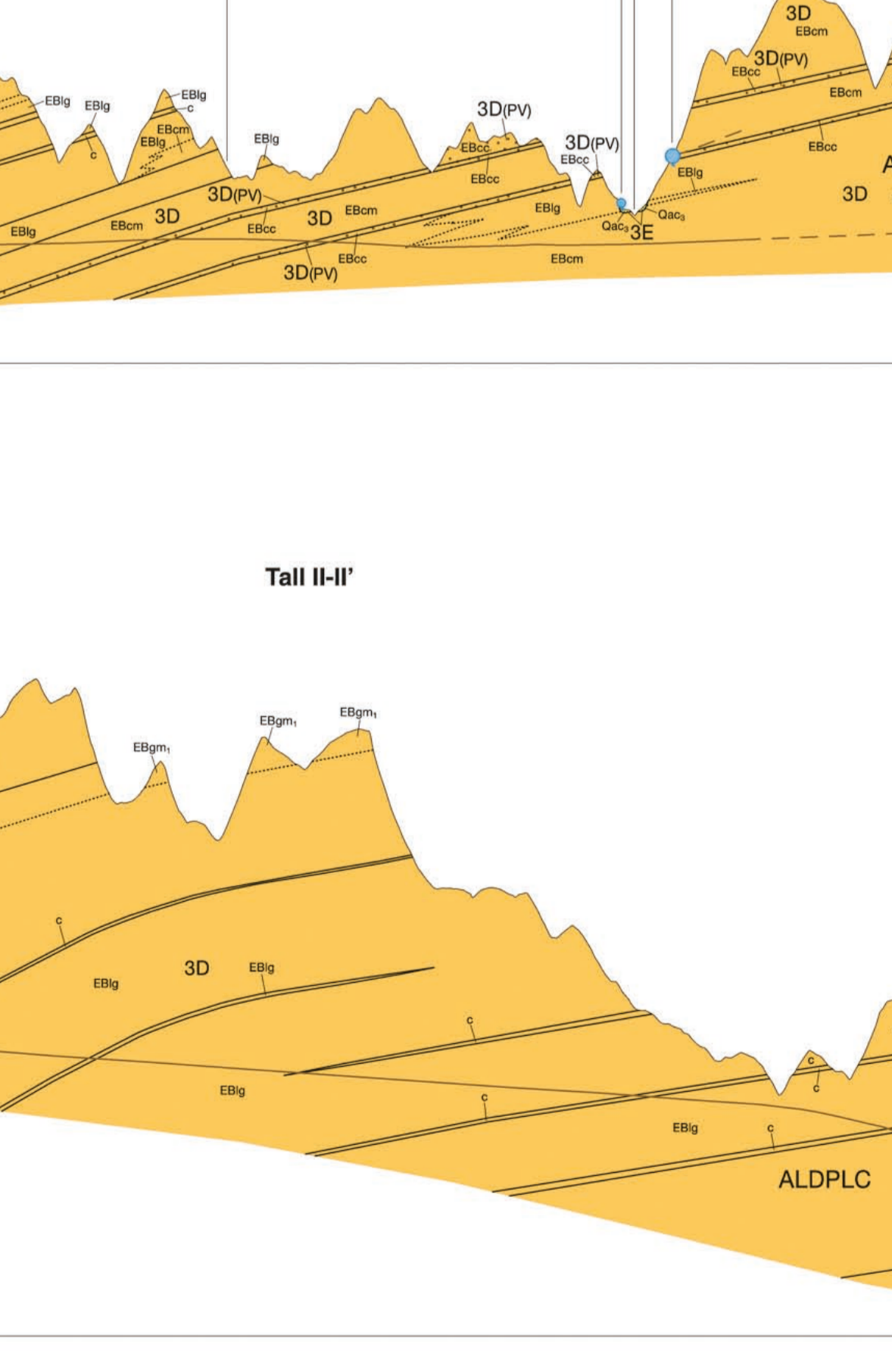
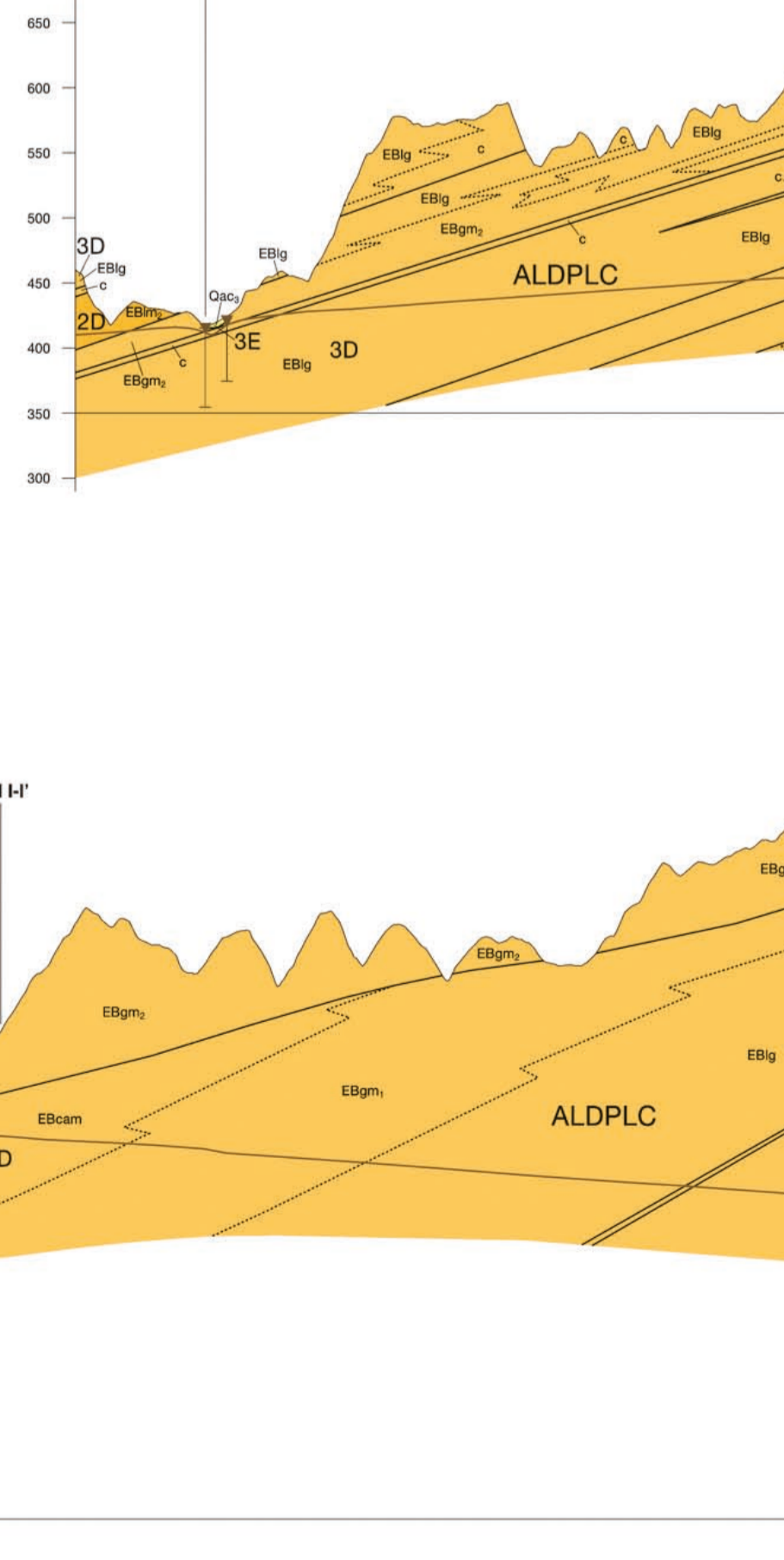
Legenda: Legend for the hydrogeological map, including symbols for different geological units and their characteristics.



Porositat i xarxes de control 1:50 000



Legenda: Legend for porosity and control networks, including symbols for different porosity types and control networks.



Legenda dels llaços: Legend for the map, including symbols for different geological units and their characteristics.

