

Mapa geològic dels processos actius i recents i de l'activitat antròpica. Geoastròpic 1:25 000



Map title, scale, and metadata including author information and publication details.

Legenda

Legend for the geological map, detailing symbols for geological units, topographic features, and human activity.

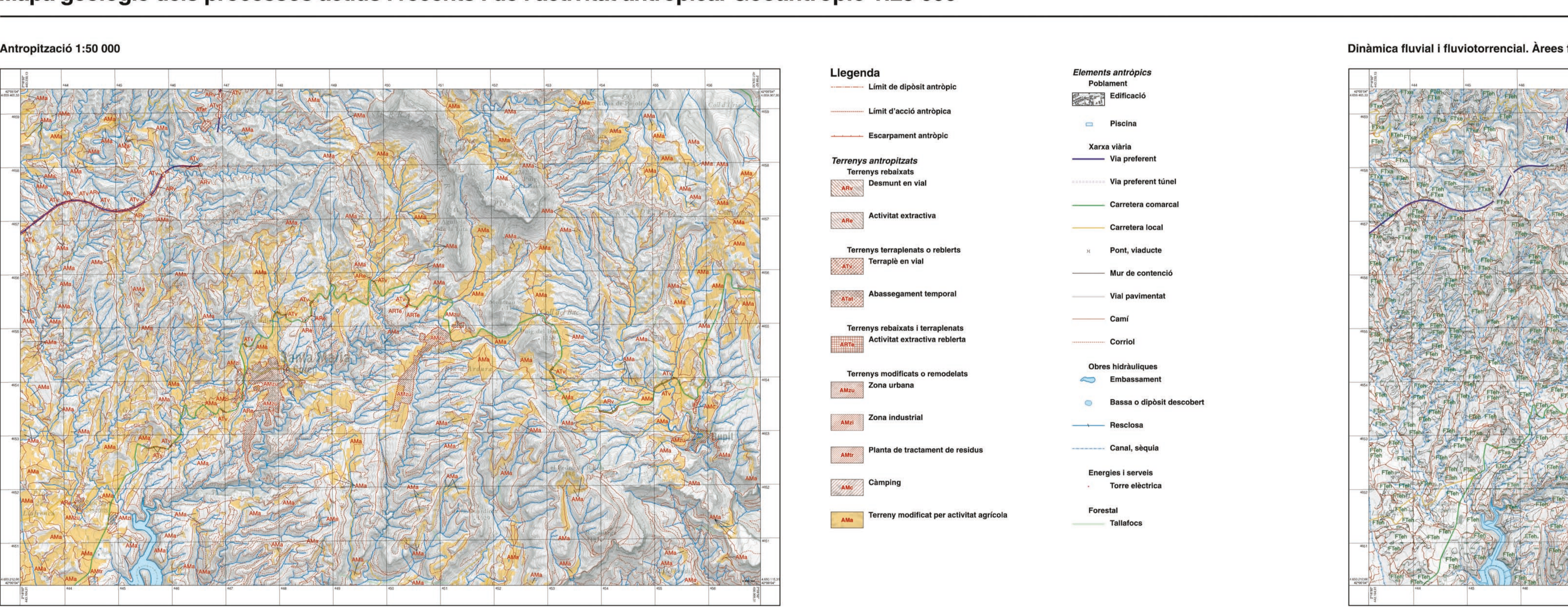
Àmbit de transport antròpic

Legend for anthropogenic transport areas, including symbols for different types of transport and their characteristics.

Mapa geològic de Catalunya Geotraball II. Mapa geoastròpic

Large geological map of Catalonia with a detailed legend for various geological and anthropogenic features.

Mapa geològic dels processos actius i recents i de l'activitat antròpica. Geoastròpic 1:25 000



Legend for the geological map, detailing symbols for geological units, topographic features, and human activity.

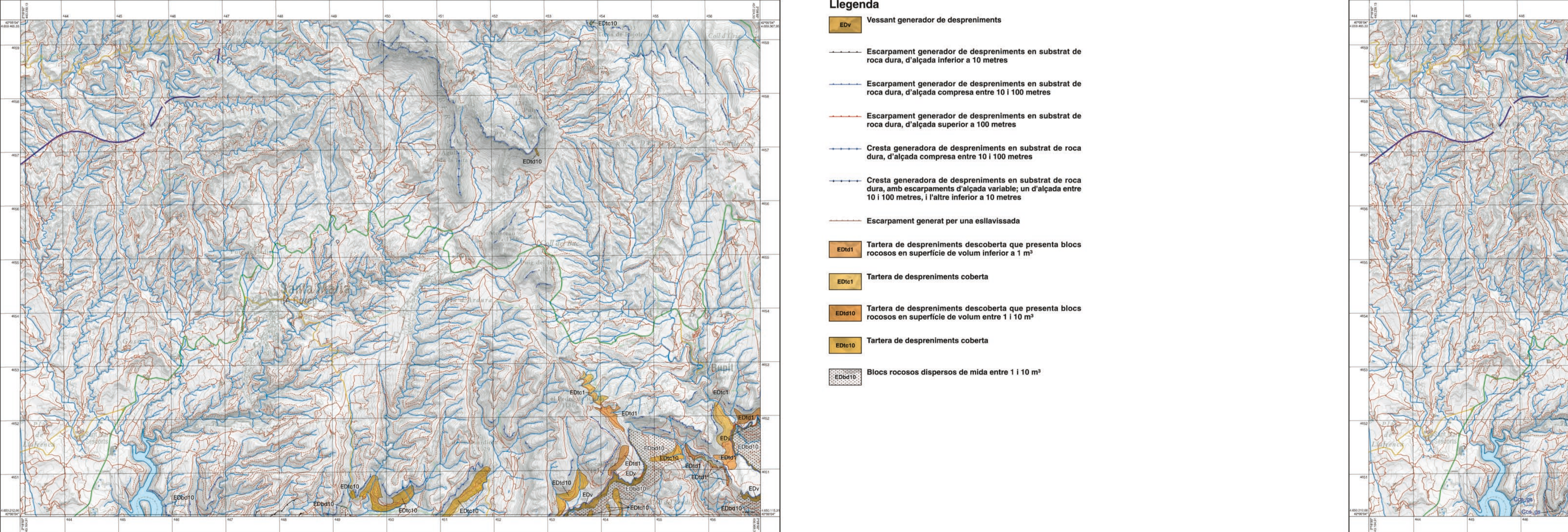
Legenda

Legend for the geological map, detailing symbols for geological units, topographic features, and human activity.

Àmbit de transport antròpic

Legend for anthropogenic transport areas, including symbols for different types of transport and their characteristics.

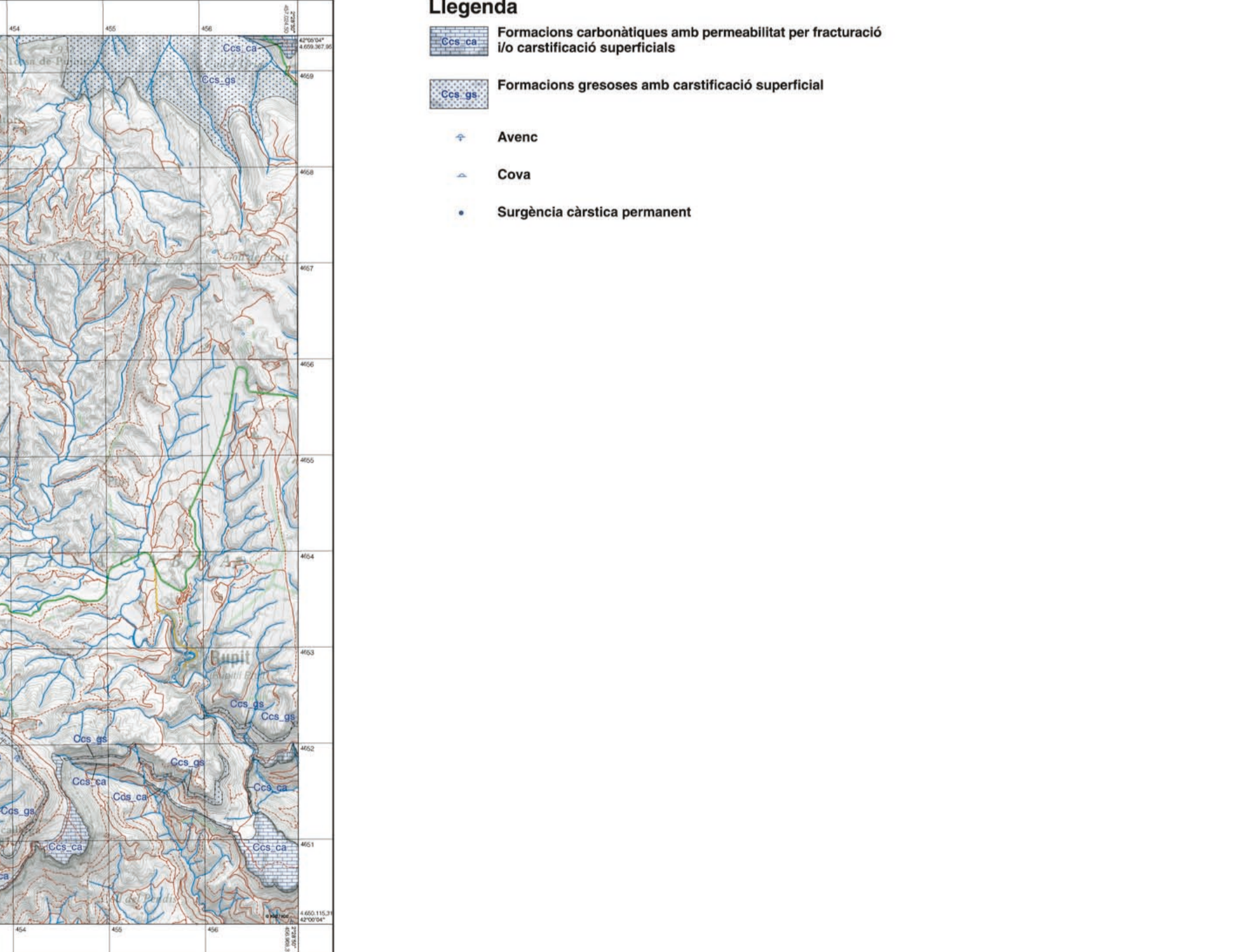
Dinàmica dels moviments de vessant. Àrees funcionals 1:50 000



Legenda

Legend for the slope movement dynamics map, detailing symbols for functional areas and movement types.

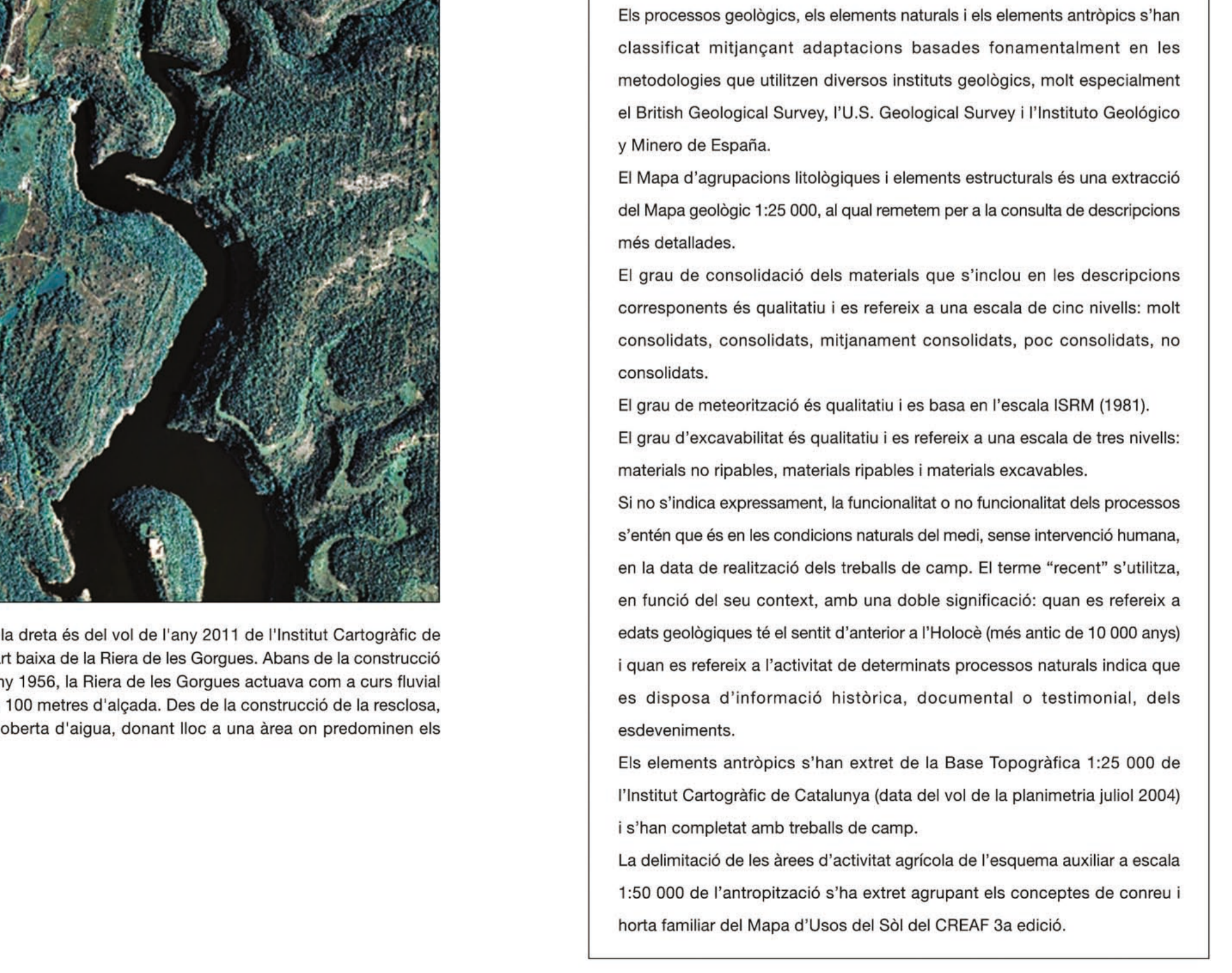
Dinàmica càrstica. Àrees funcionals 1:50 000



Legenda

Legend for the karst dynamics map, detailing symbols for functional areas and karst features.

Dipòsits de processos inactius i relíctes 1:50 000



Legenda

Legend for the deposit map, detailing symbols for deposit types and related features.

Mapa geològic de Catalunya Geotraball II. Mapa geoastròpic

Large geological map of Catalonia with a detailed legend for various geological and anthropogenic features.

El grau d'excavabilitat és qualitatiu i es refereix a una escala de tres nivells: materials no ripables, materials ripables i materials excavables. El grau d'excavabilitat és qualitatiu i es refereix a una escala de tres nivells: materials no ripables, materials ripables i materials excavables.