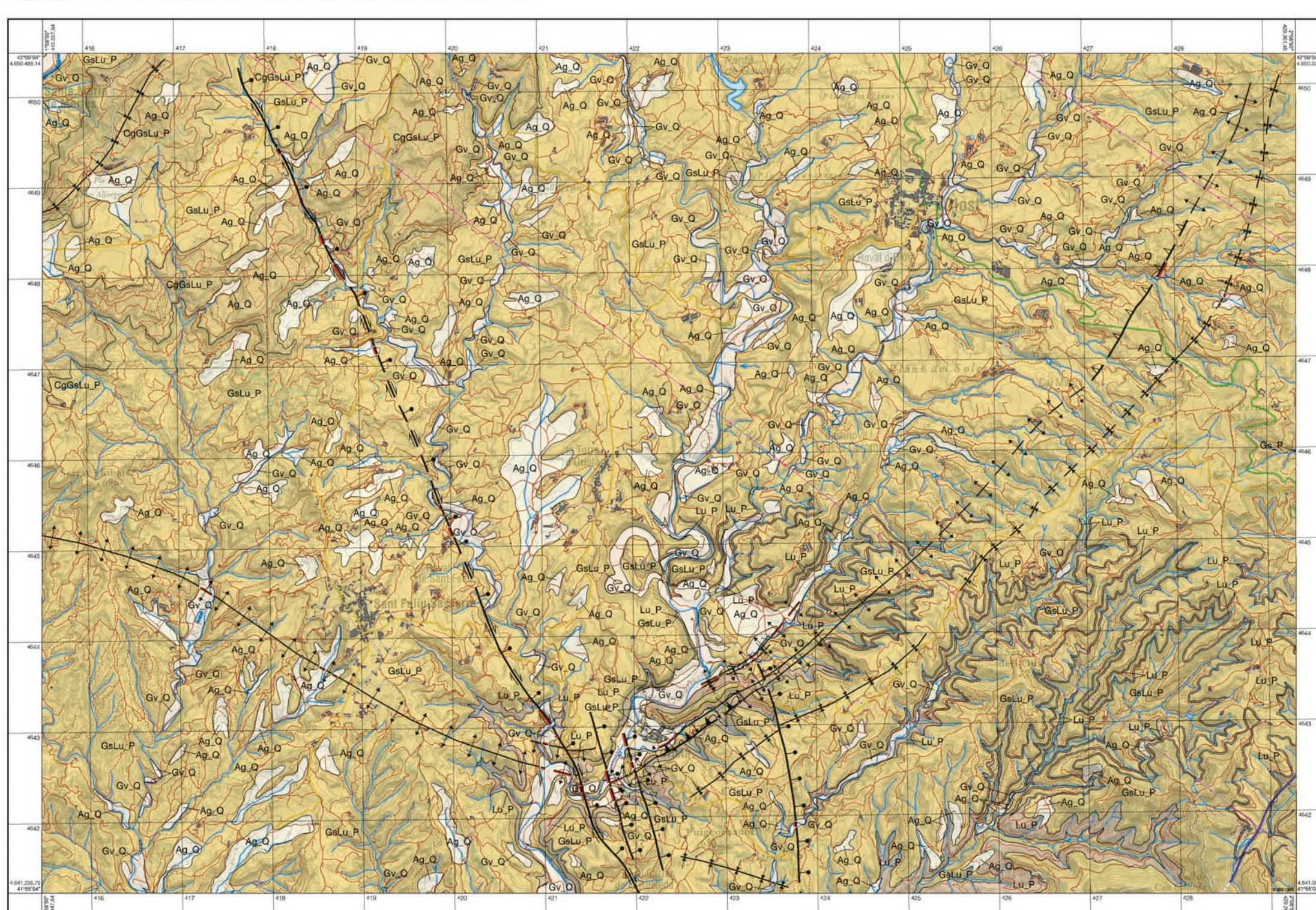


Legend (Legenda) for the geological map, detailing symbols for anthropogenic activities, natural surface formations, and various geological units.

Map cover for 'Mapa geològic de Catalunya Geotriball II. Mapa geotectònic Olost 331-2-1 (72-25) 1:25 000'.

Map metadata including scale (1:25,000), projection (UTM31 nord), and contact information for Institut Cartogràfic i Geològic de Catalunya.

Agrupacions litològiques i elements estructurals 1:50 000



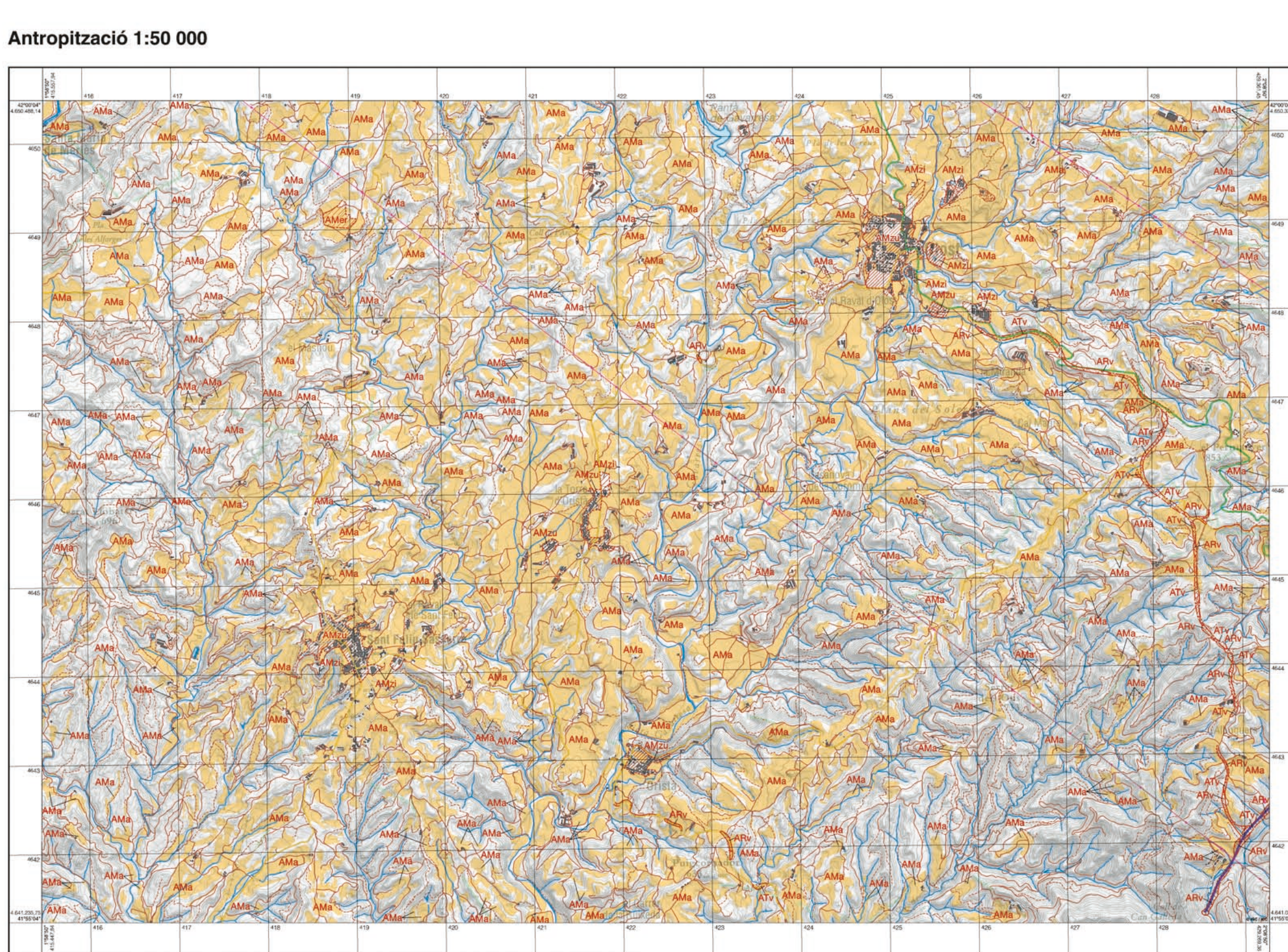
Legend for the lithological and structural map, defining symbols for sedimentary units, faults, and structural features.

Legend for the dynamic fluvial map, defining symbols for fluvial dynamics, erosion, and sedimentation.

Map cover for 'Mapa geològic de Catalunya Geotriball II. Mapa geotectònic Olost 331-2-1 (72-25) 1:25 000' (repeated).

Mapa geològic dels processos actius i recents i de l'activitat antròpica. Geotectònic 1:25 000

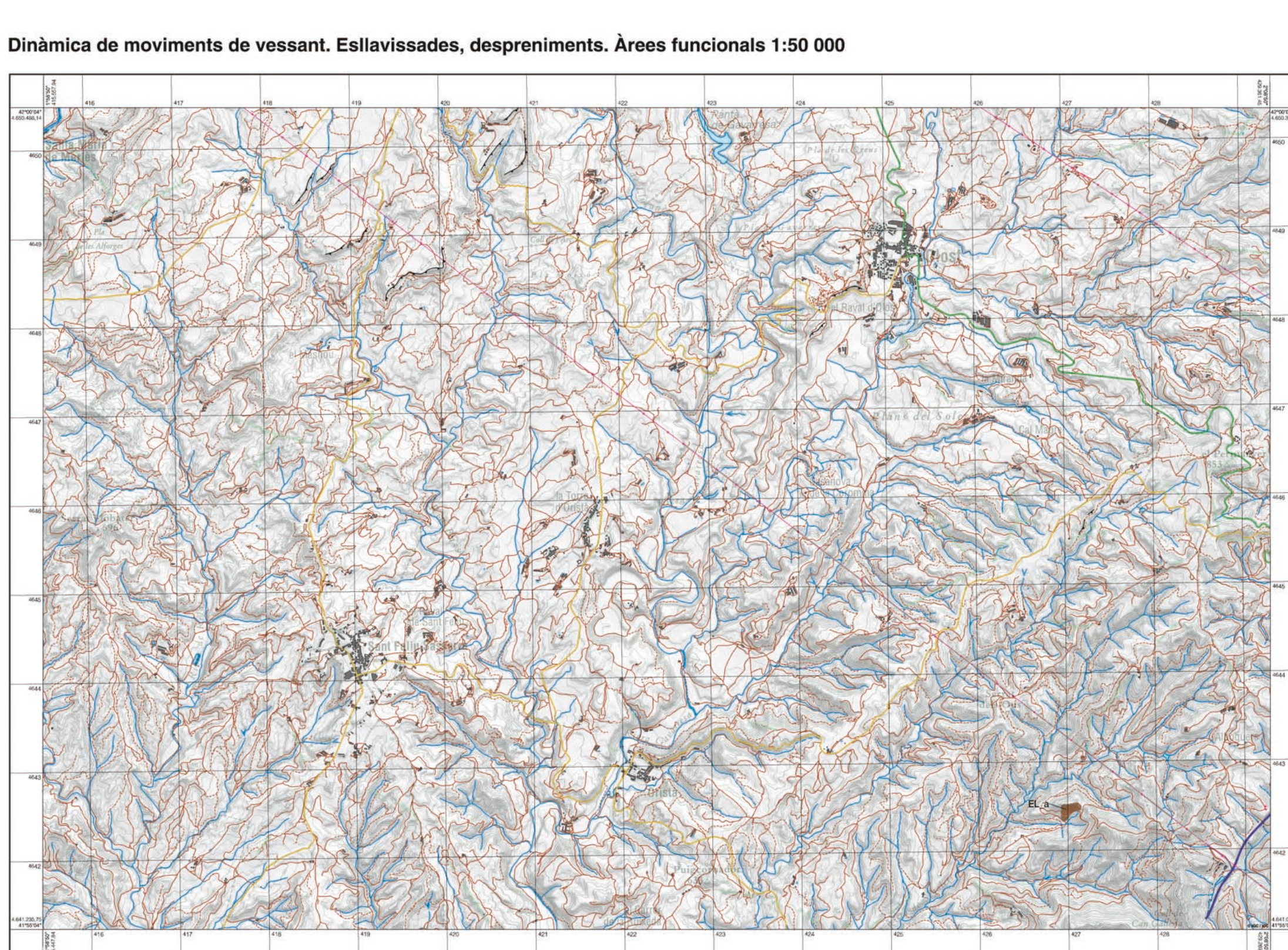
Olost 331-2-1 (72-25)



Legend for the active processes and human activity map, detailing symbols for anthropic activities, natural surface formations, and various geological units.



Legend for the fluvial dynamics and functional areas map, defining symbols for fluvial dynamics, erosion, and sedimentation.



Legend for the wind movement dynamics and erosion/deposition areas map, defining symbols for wind movement dynamics and erosion/deposition areas.



Legend for the deposits of inactive processes and relicts map, defining symbols for deposits of inactive processes and relicts.

Legend for the geological map, detailing symbols for energy, hydrography, and urban areas.

Legend for the geological map, detailing symbols for energy, hydrography, and urban areas.

Textual content describing the geological processes, map scale, and data sources, including references to the Institut Cartogràfic i Geològic de Catalunya.