

- Legend (Llegenda) detailing geological units and their symbols.

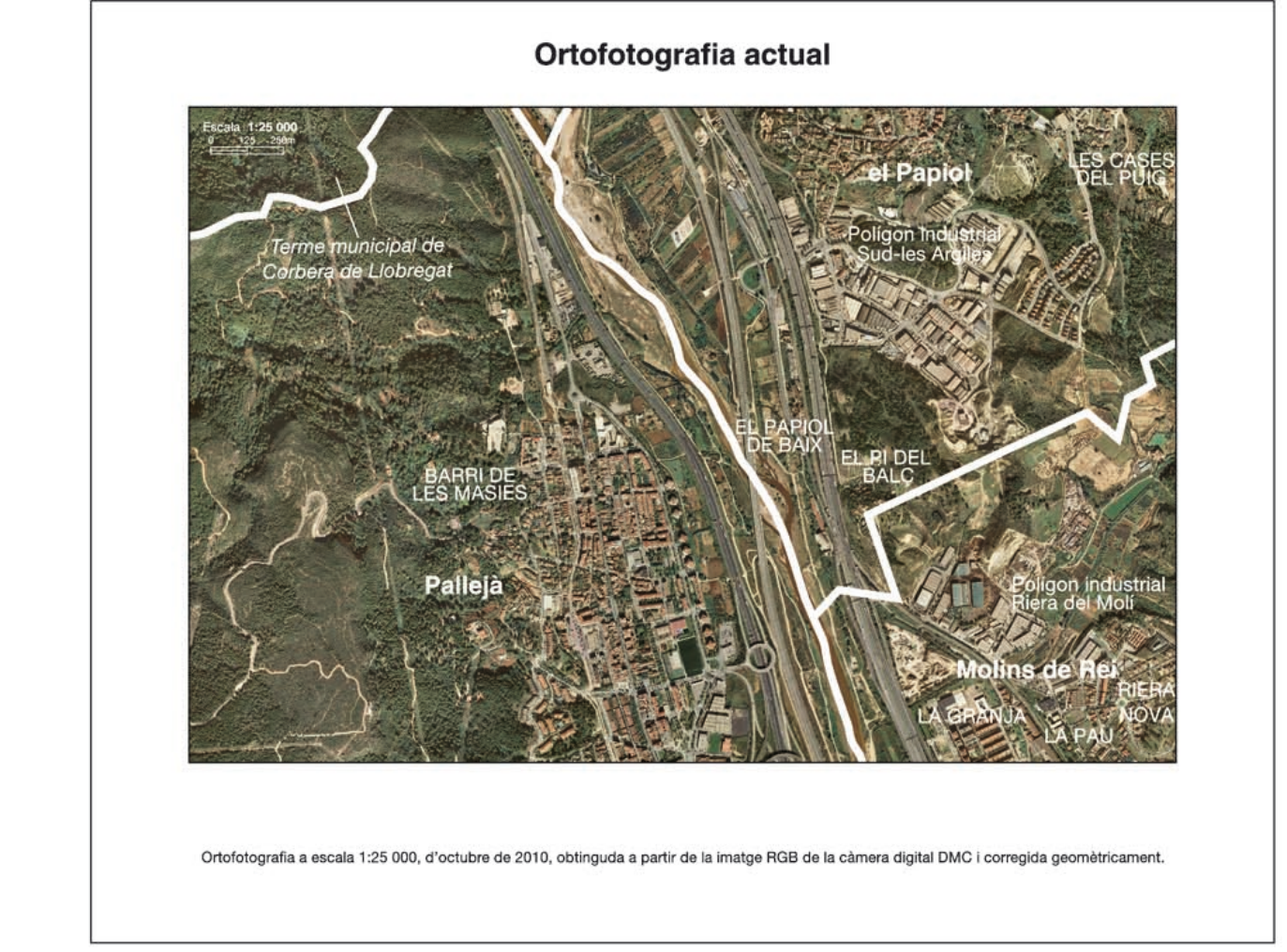
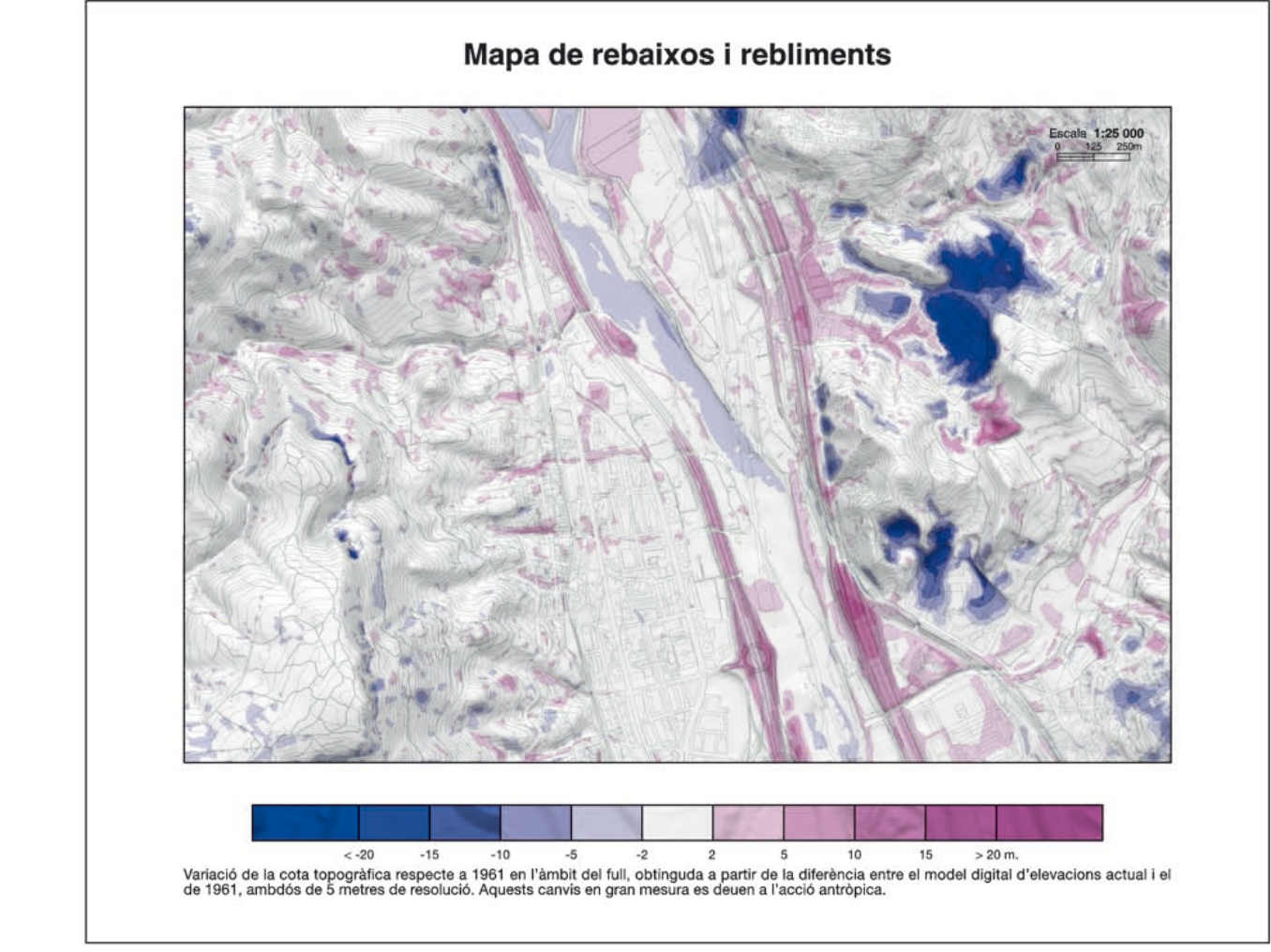
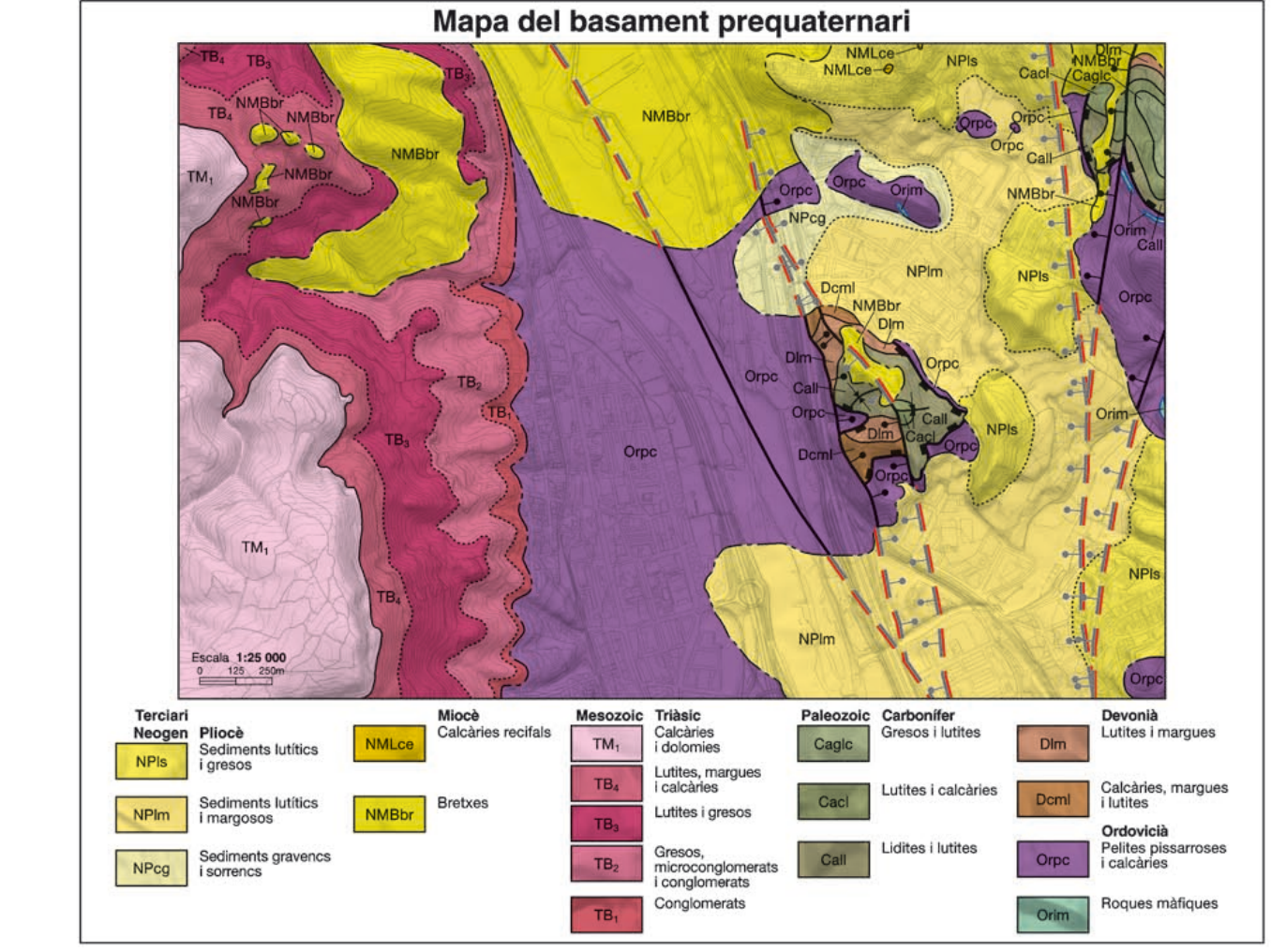
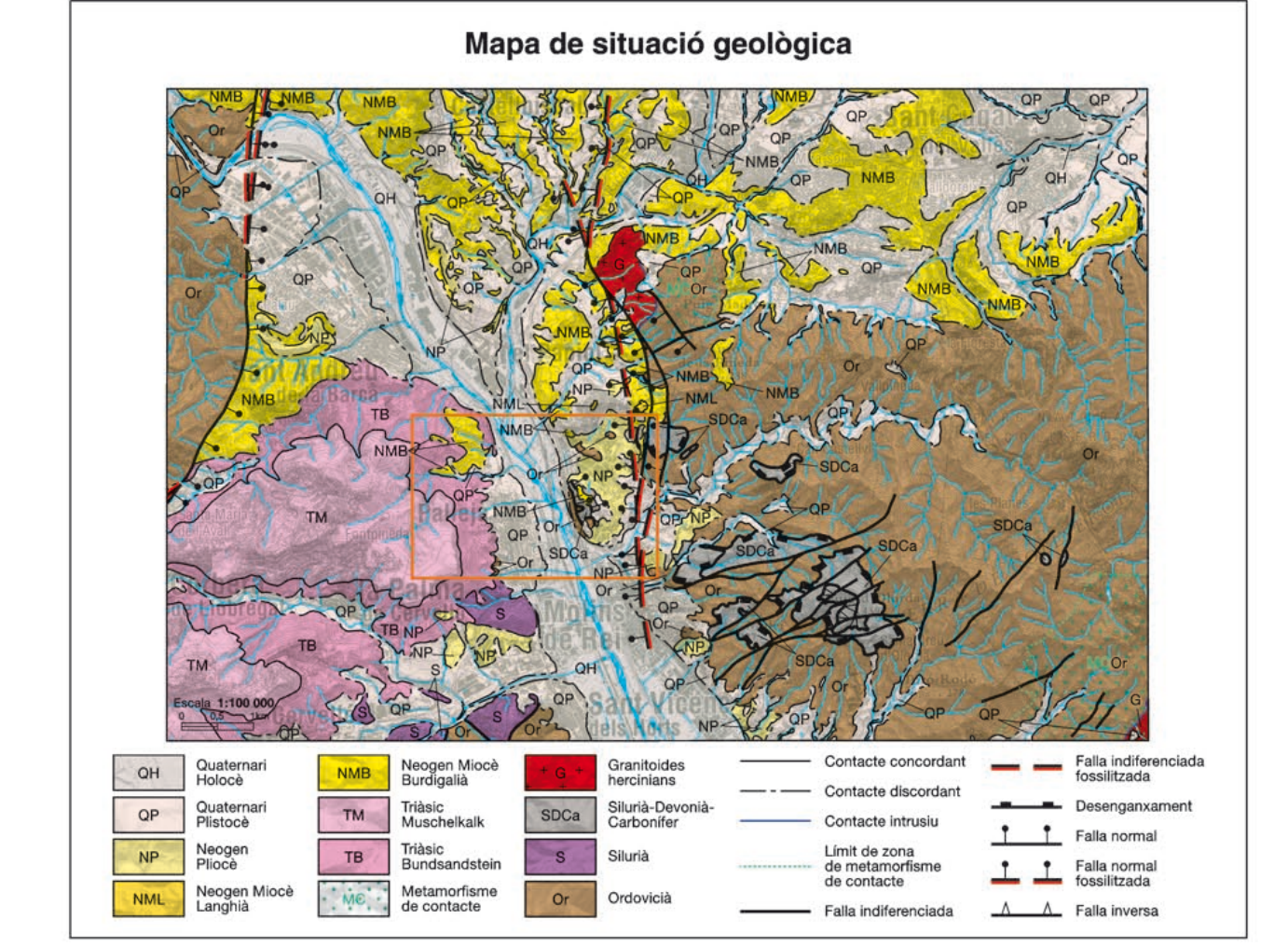
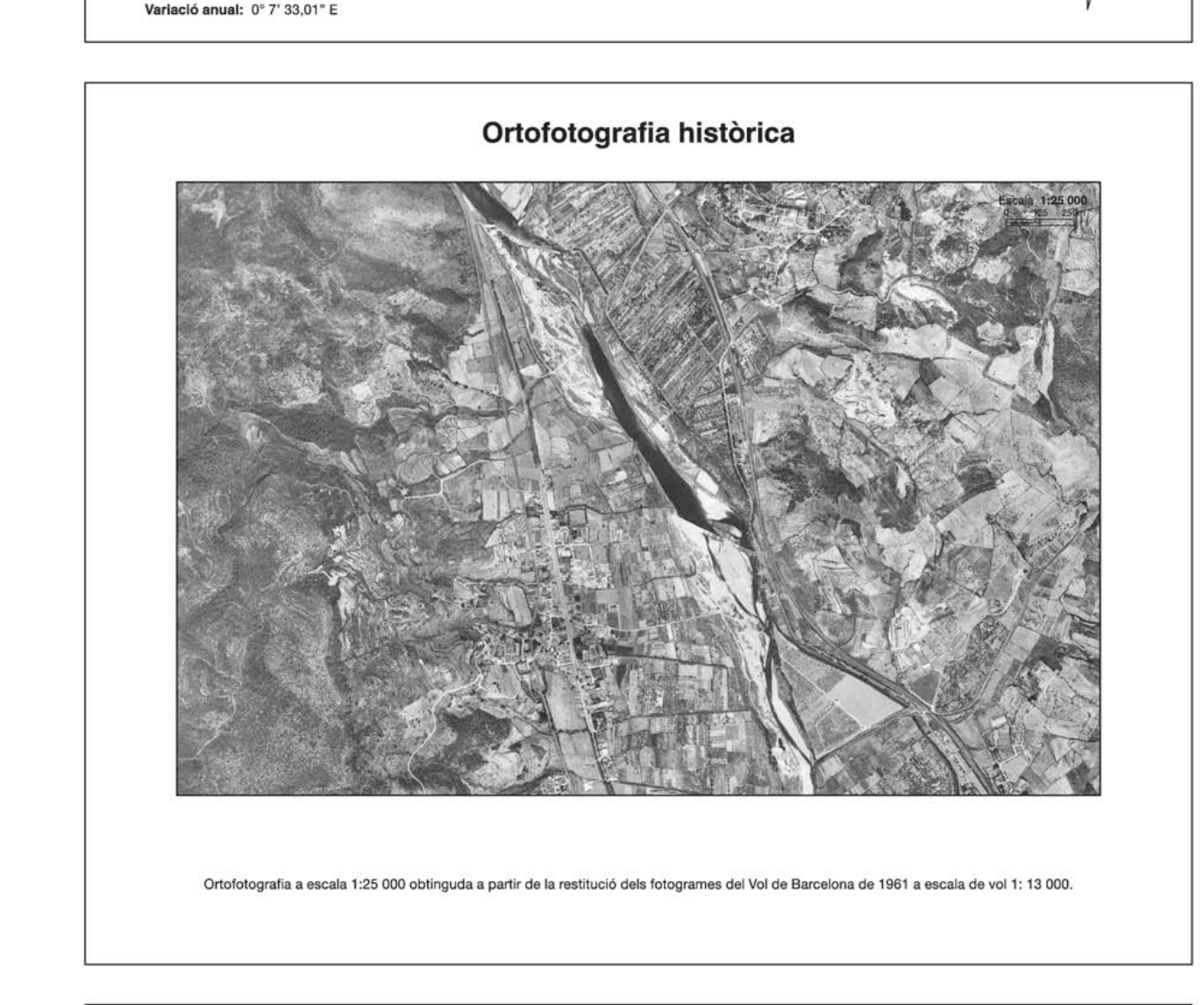
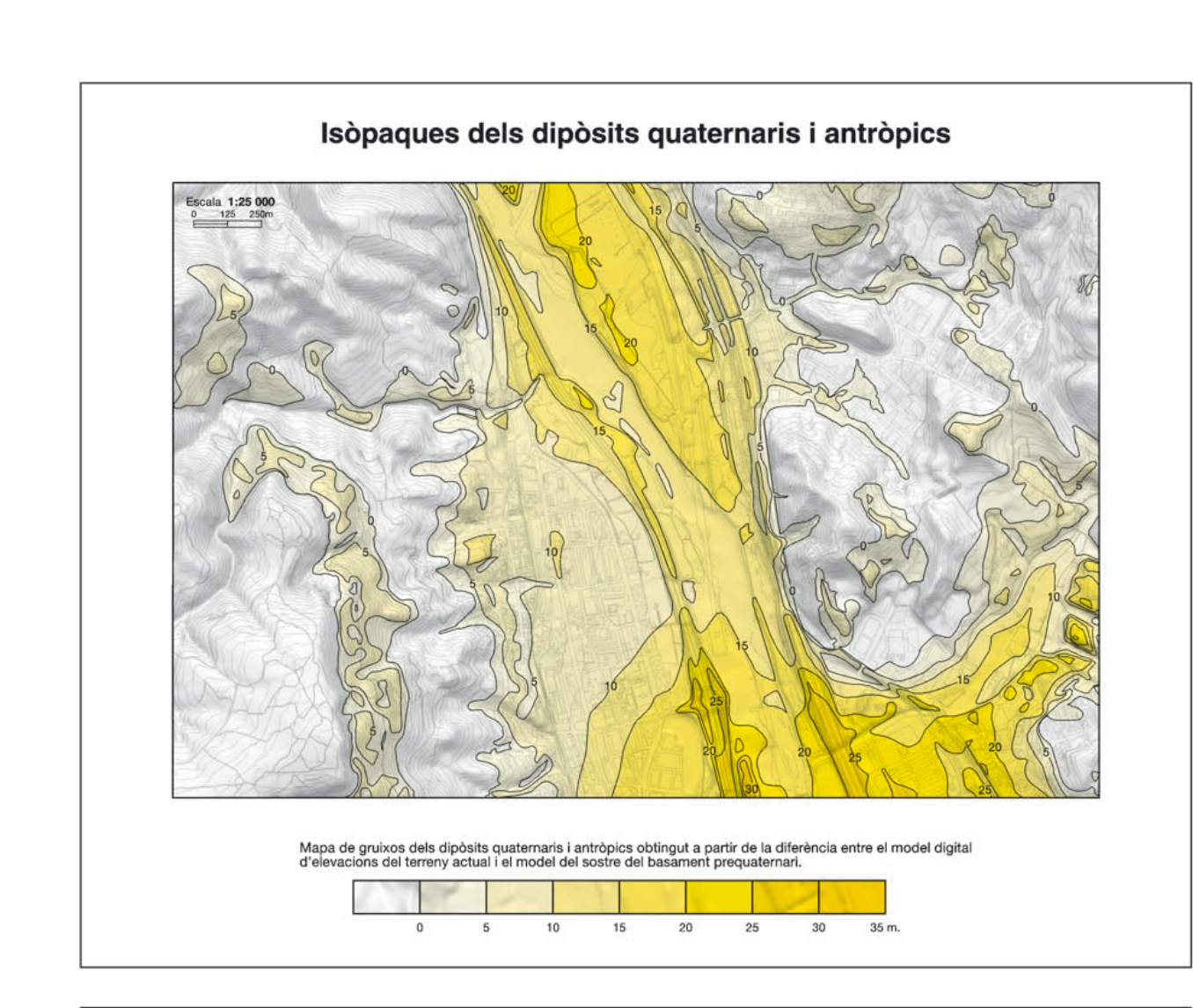
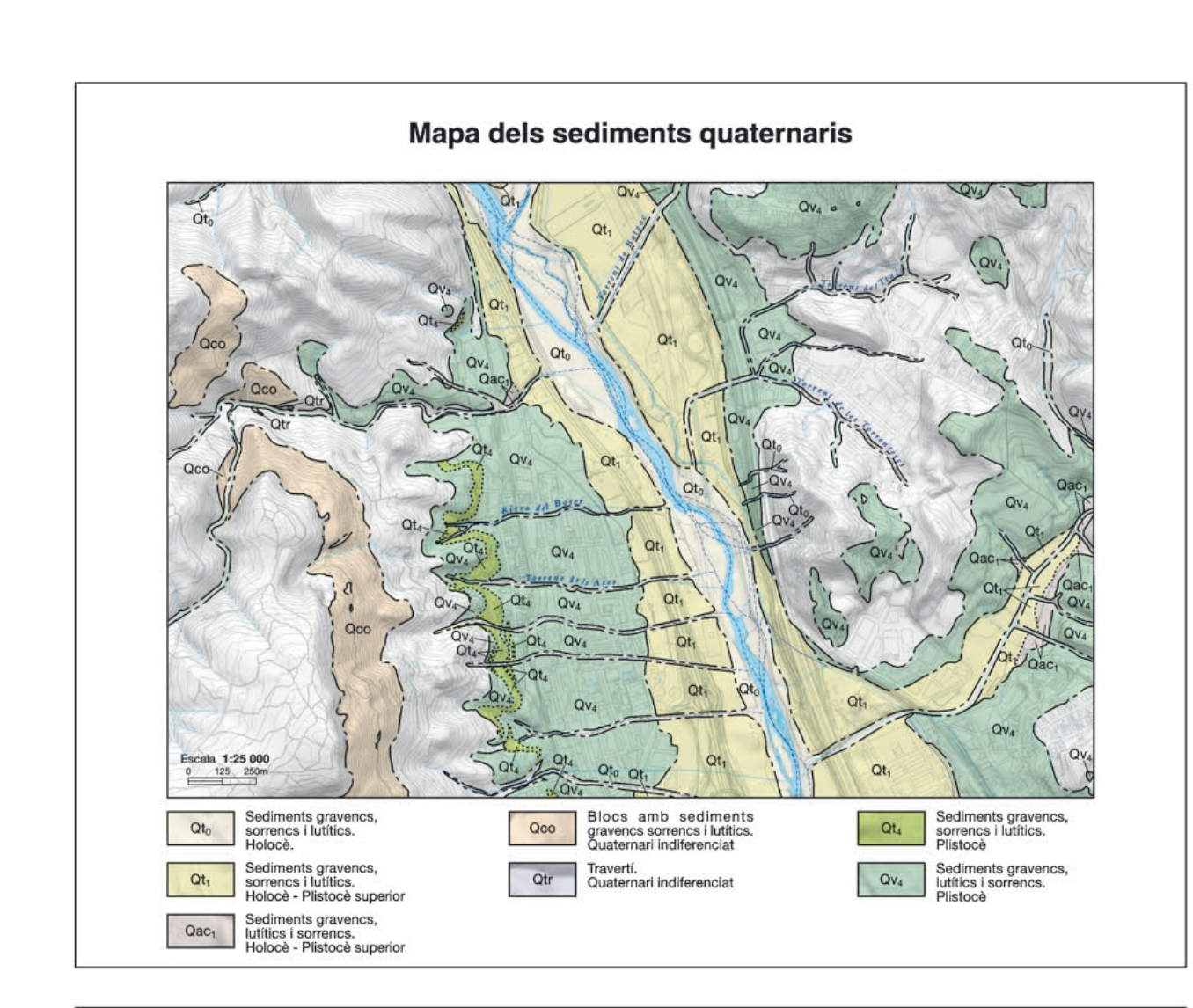
- Legend (Llegenda) detailing geological units and their symbols.

- Legend (Llegenda) detailing geological units and their symbols.

Project information, scale 1:5,000, and project title 'Mapa geològic de Catalunya Geotràbil III. Mapa geològic de les zones urbanes Pallejà'.

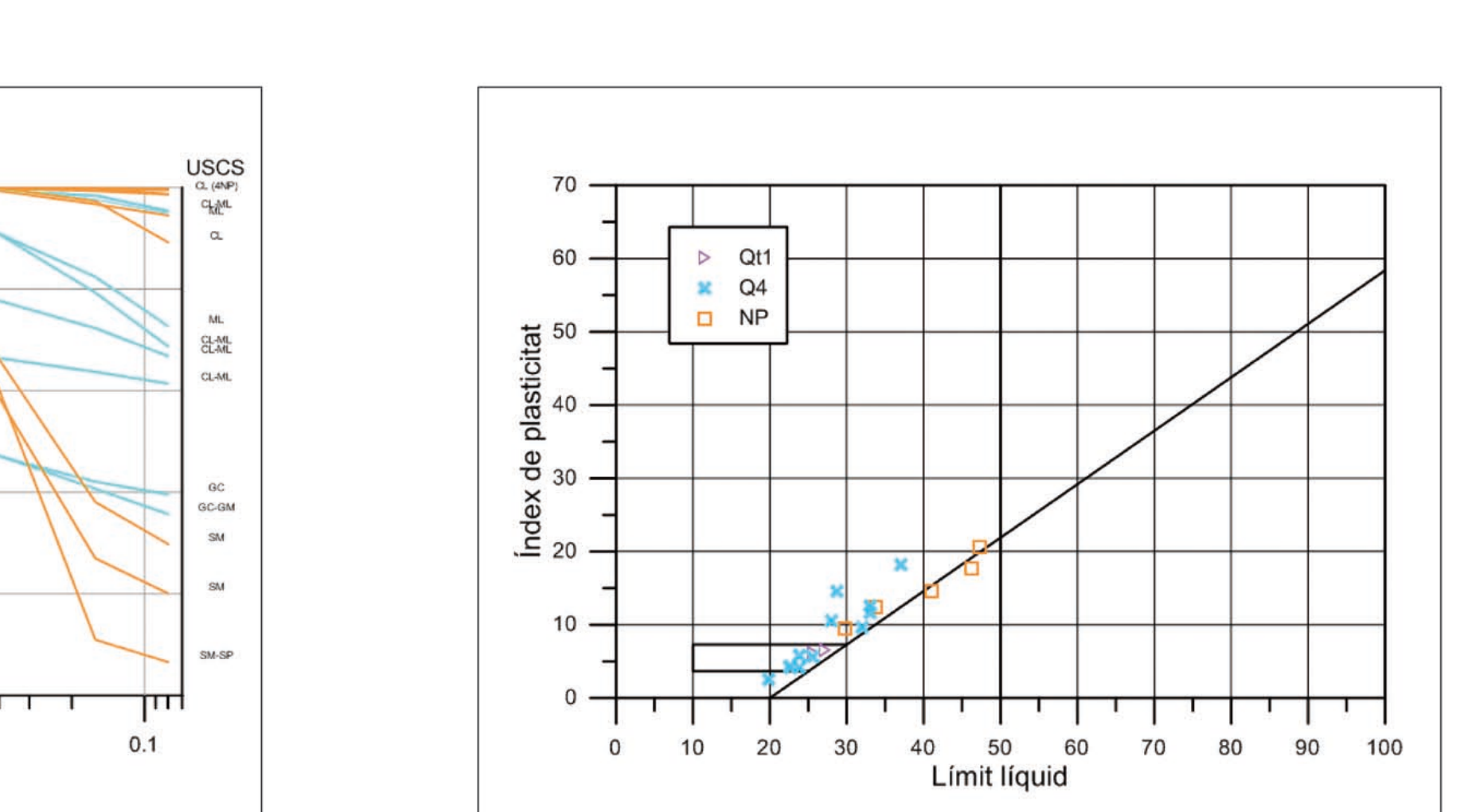
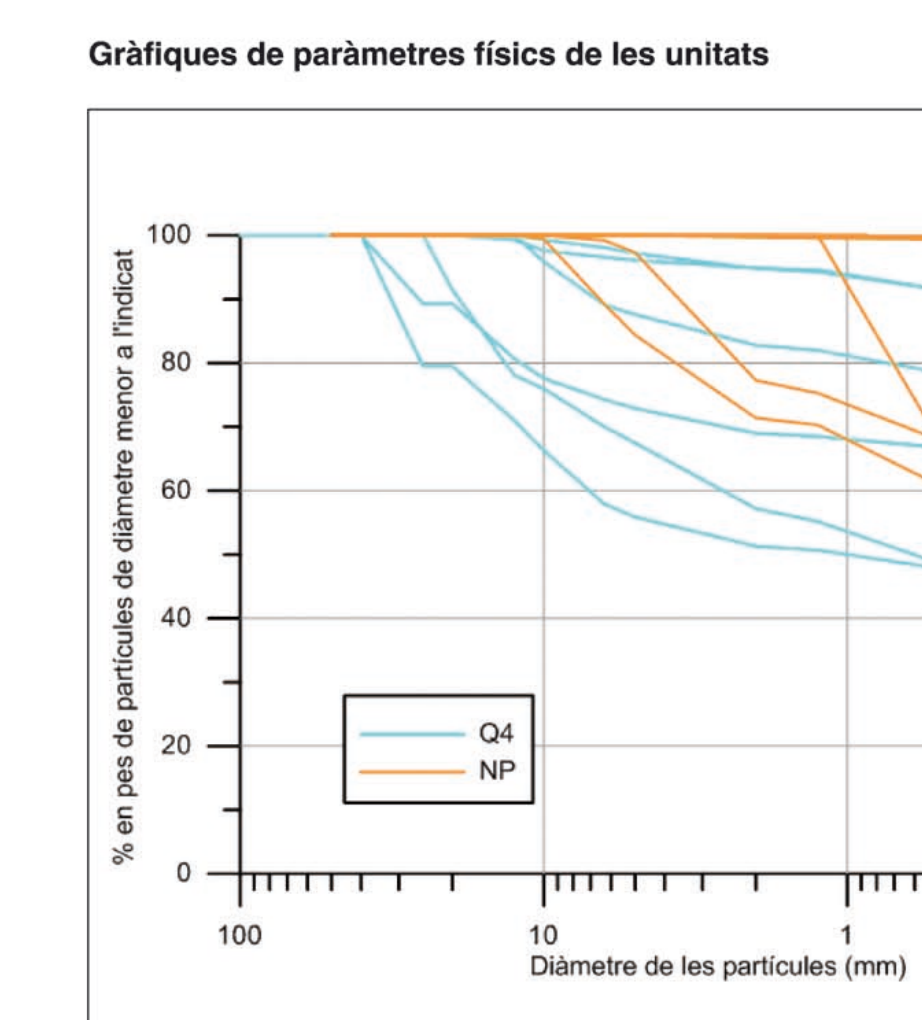
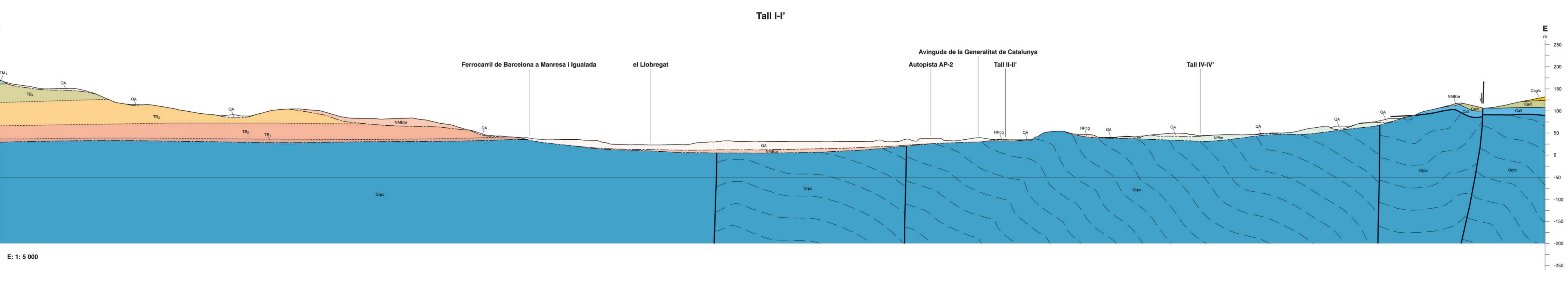
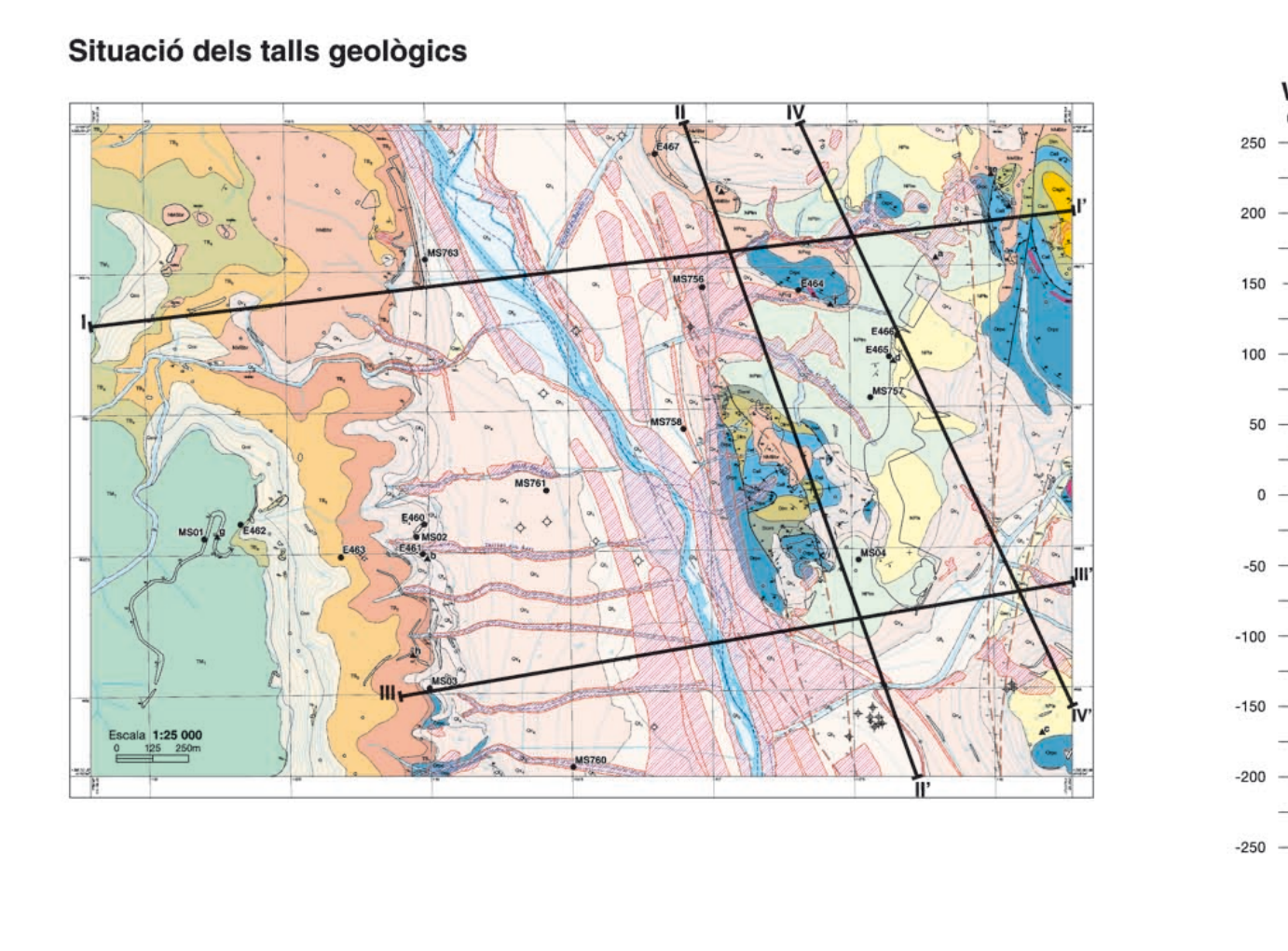
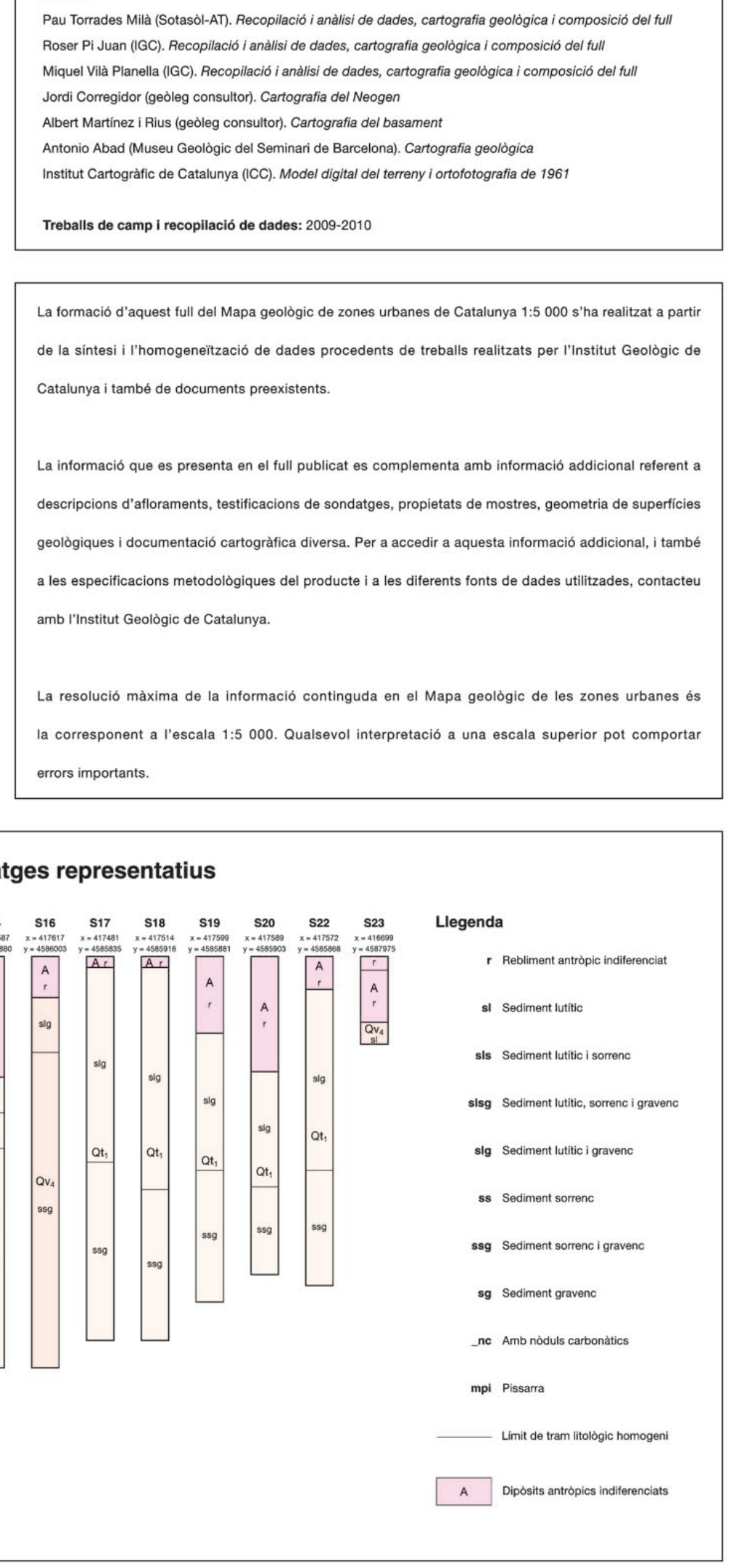
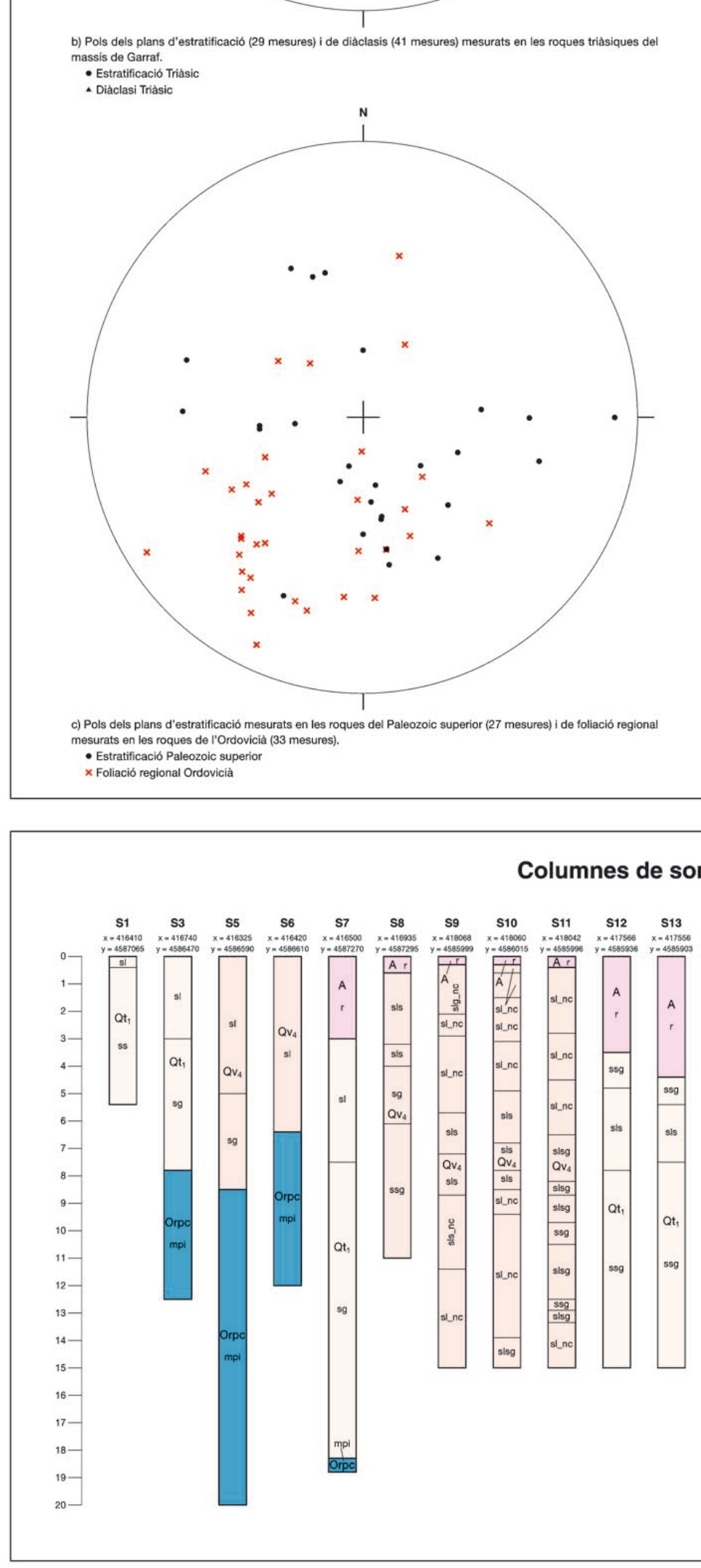
MOSTRA GRÀFICA A DAXA REJOLICÓ Institut Cartogràfic i Geològic de Catalunya - www.icgc.cat - 2018 - Fitxer digital professional GeoPDF en Sistema geològic de referència (ETRS89) (latituds: GRIGNO). Projecció cartogràfica UTM31 nord

Mapa geològic: Description of the geological map and its purpose.

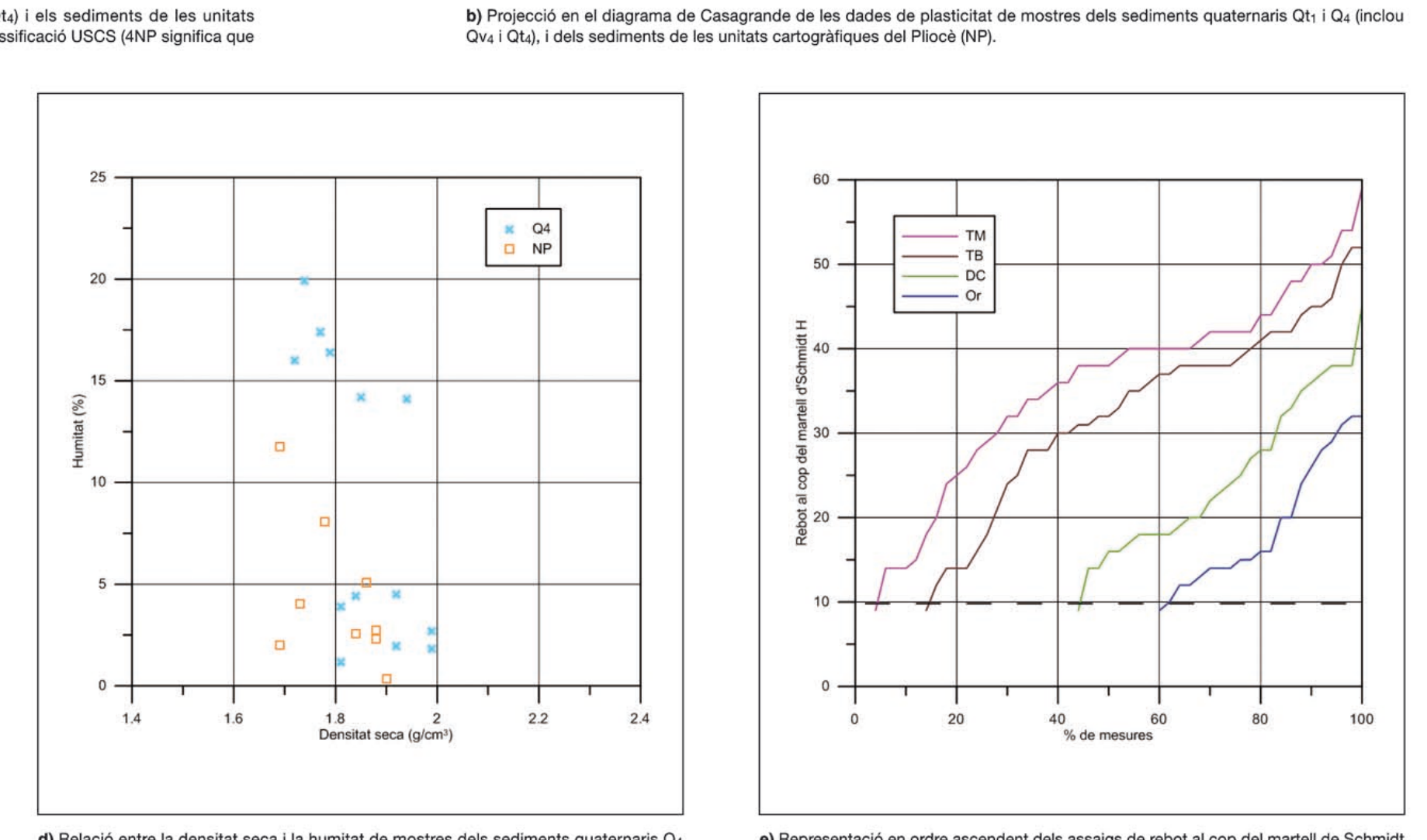
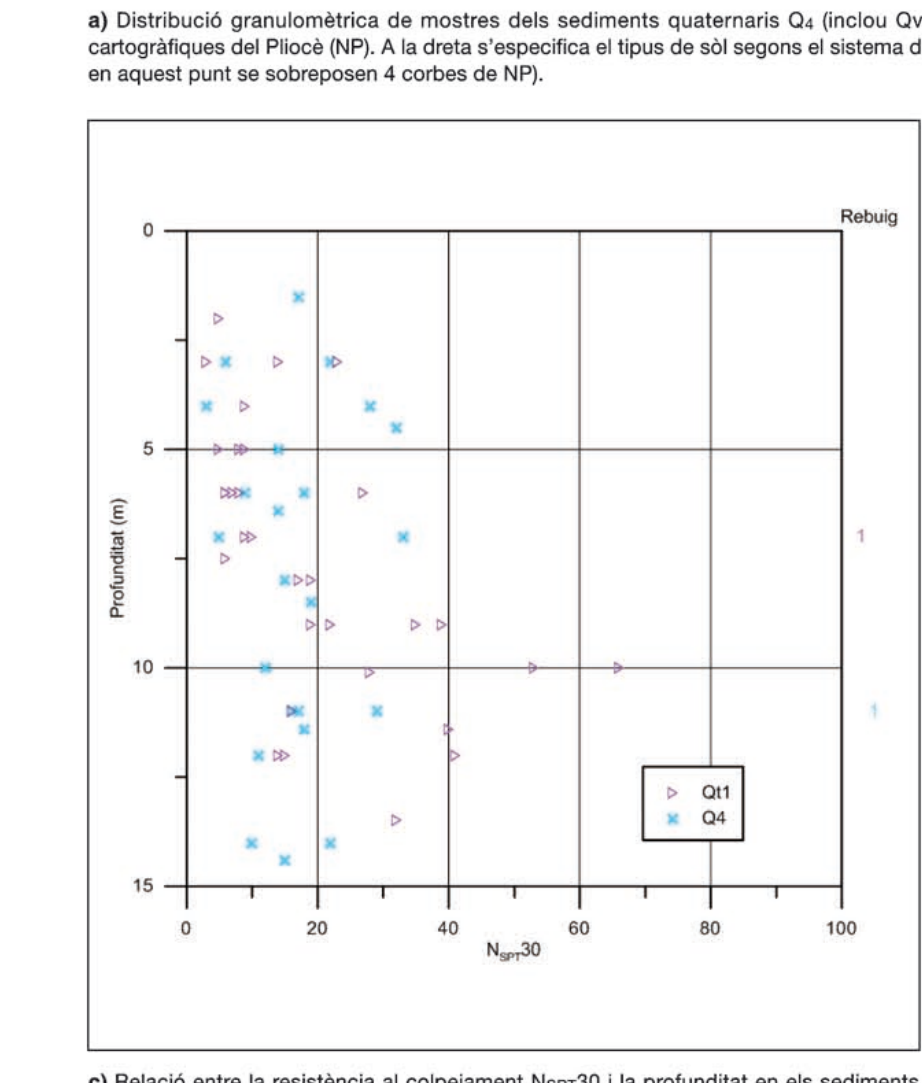
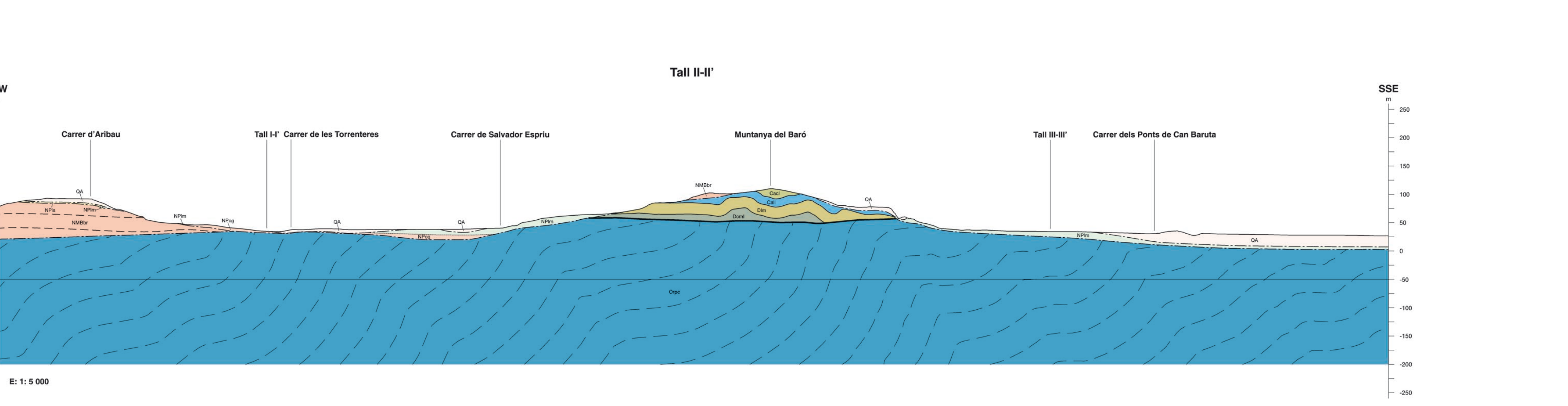


Sediments i roques miocenes: Description of Miocene sediments and rocks.

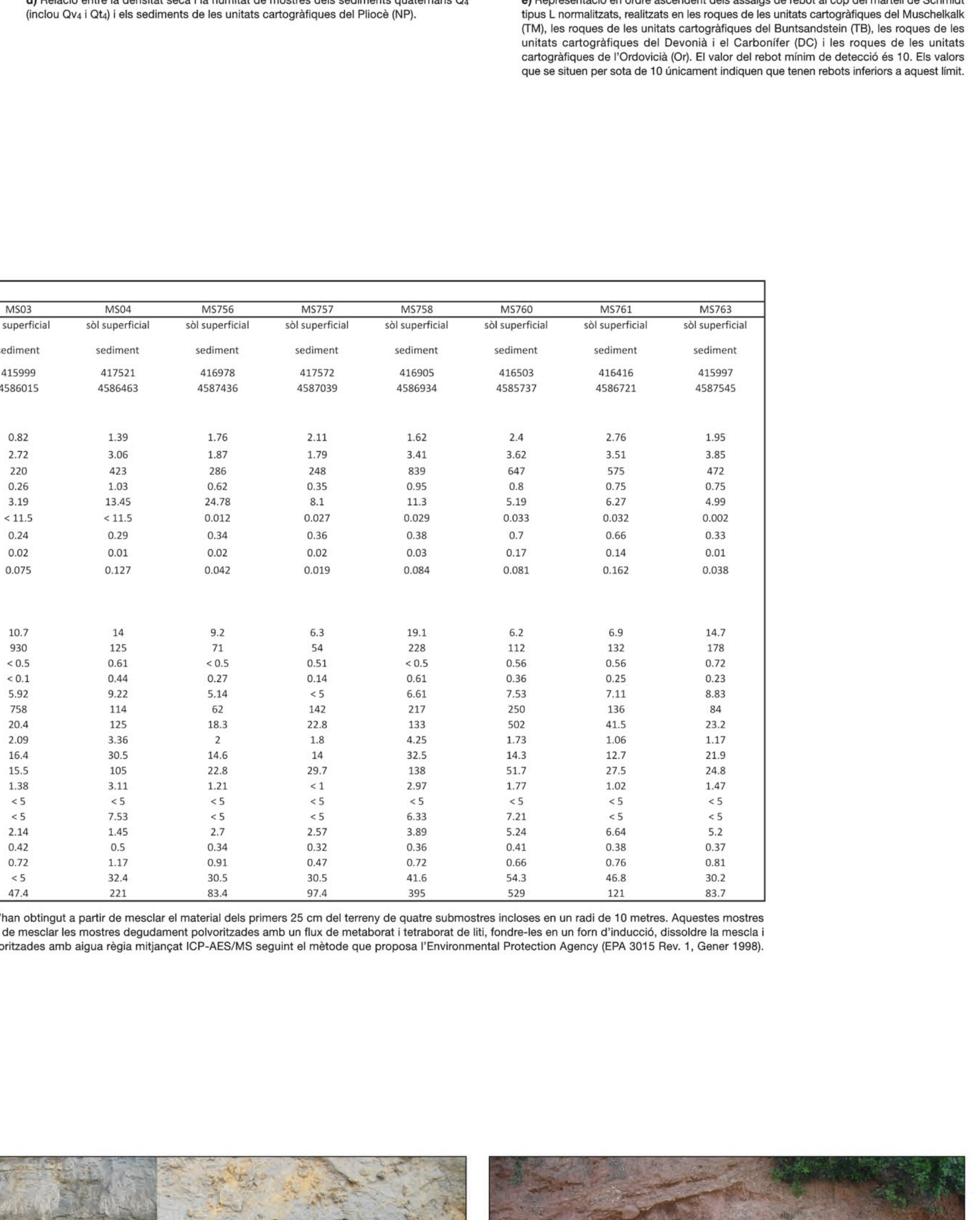
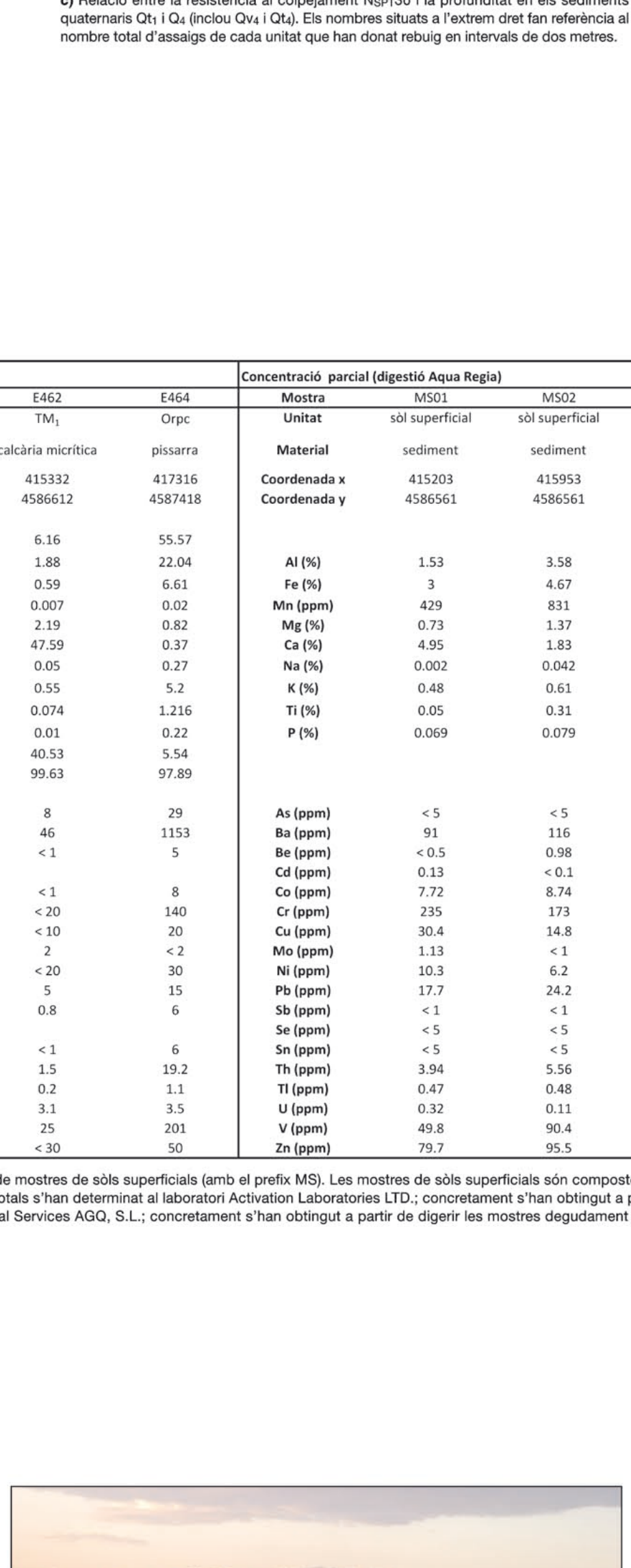
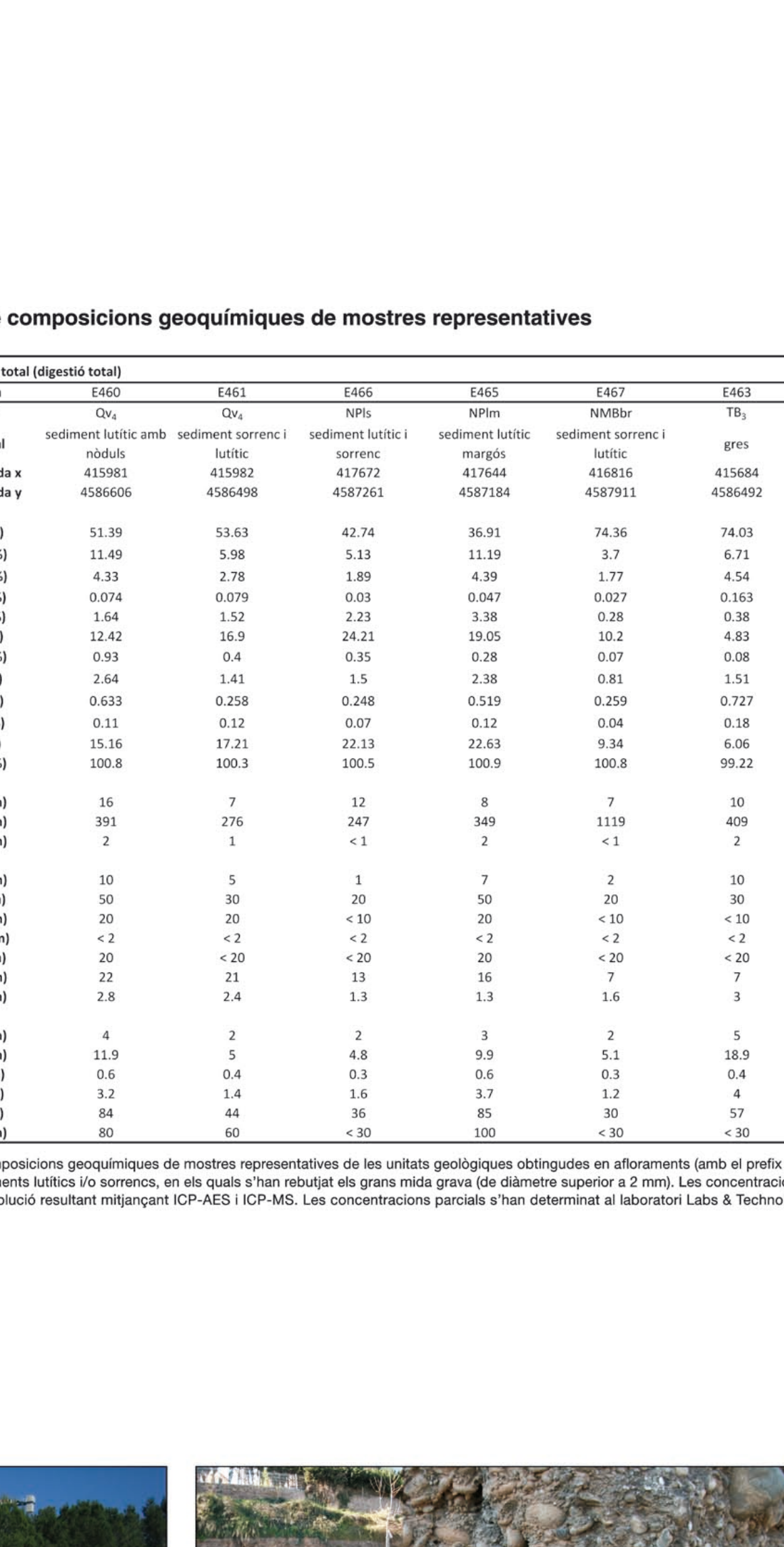
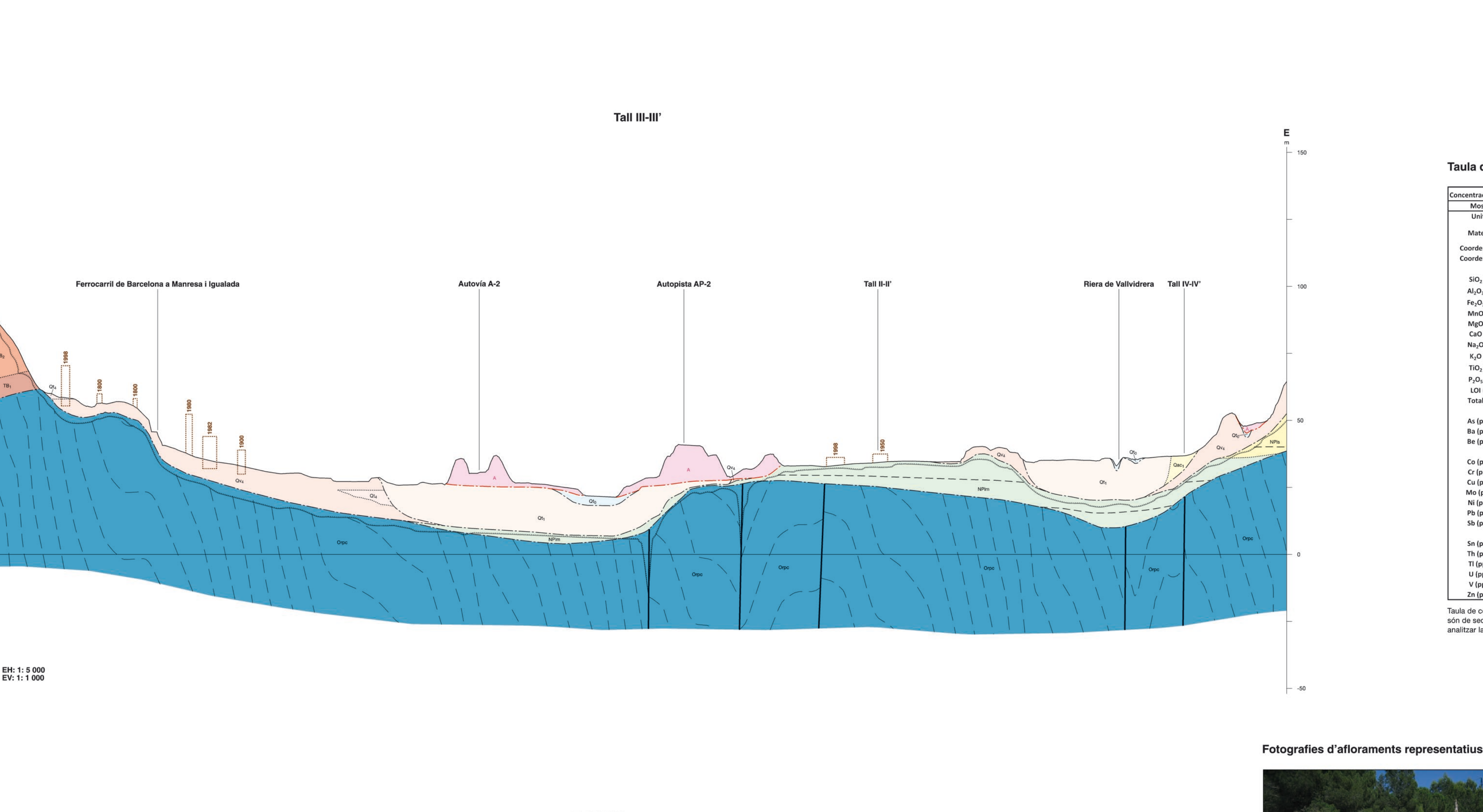
Acque sedimentàries paleozoiques: Description of Paleozoic sedimentary rocks.



- Legend (Llegenda) detailing geological units and their symbols.



- Legend (Llegenda) detailing geological units and their symbols.



- Legend (Llegenda) detailing geological units and their symbols.

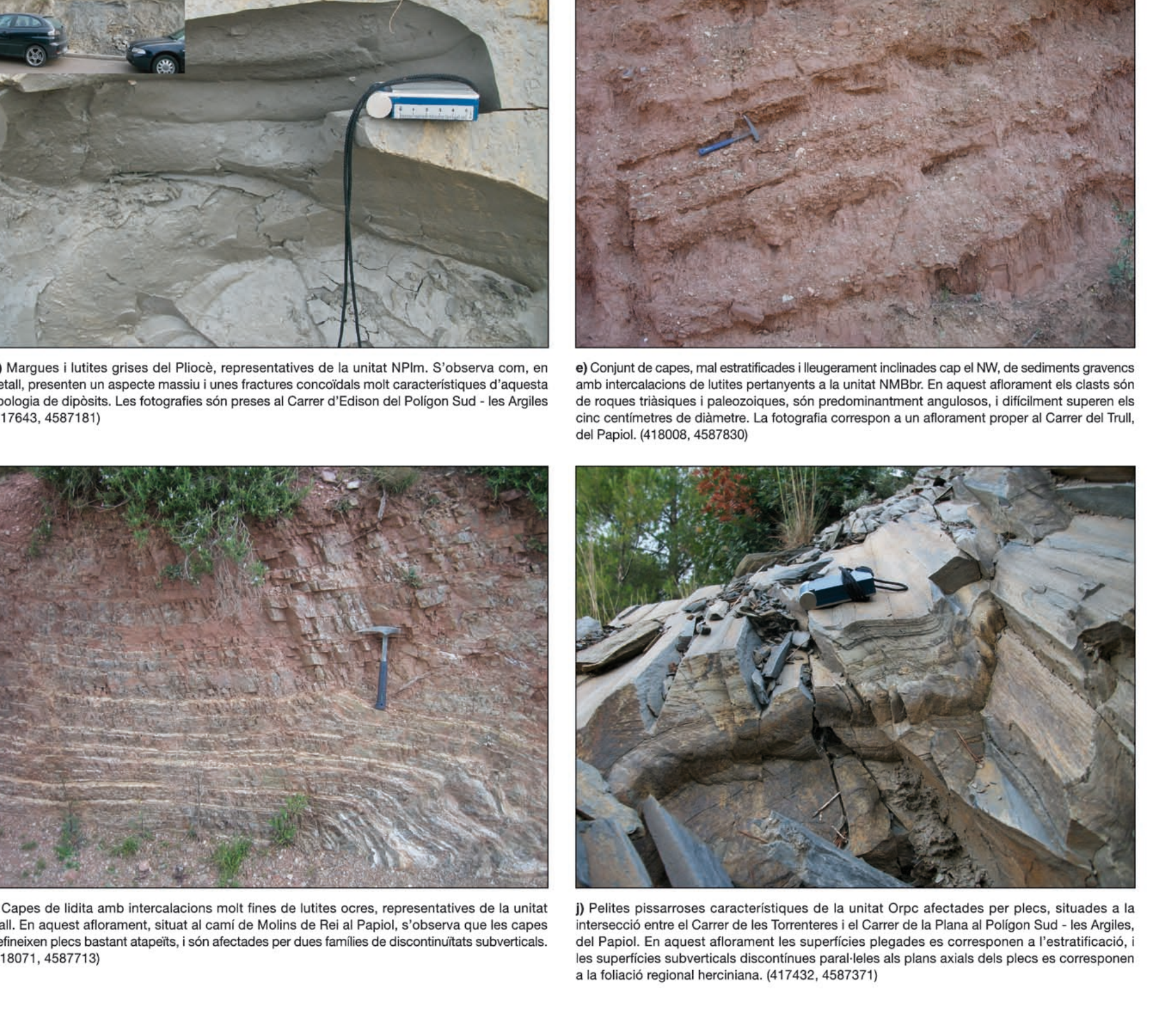
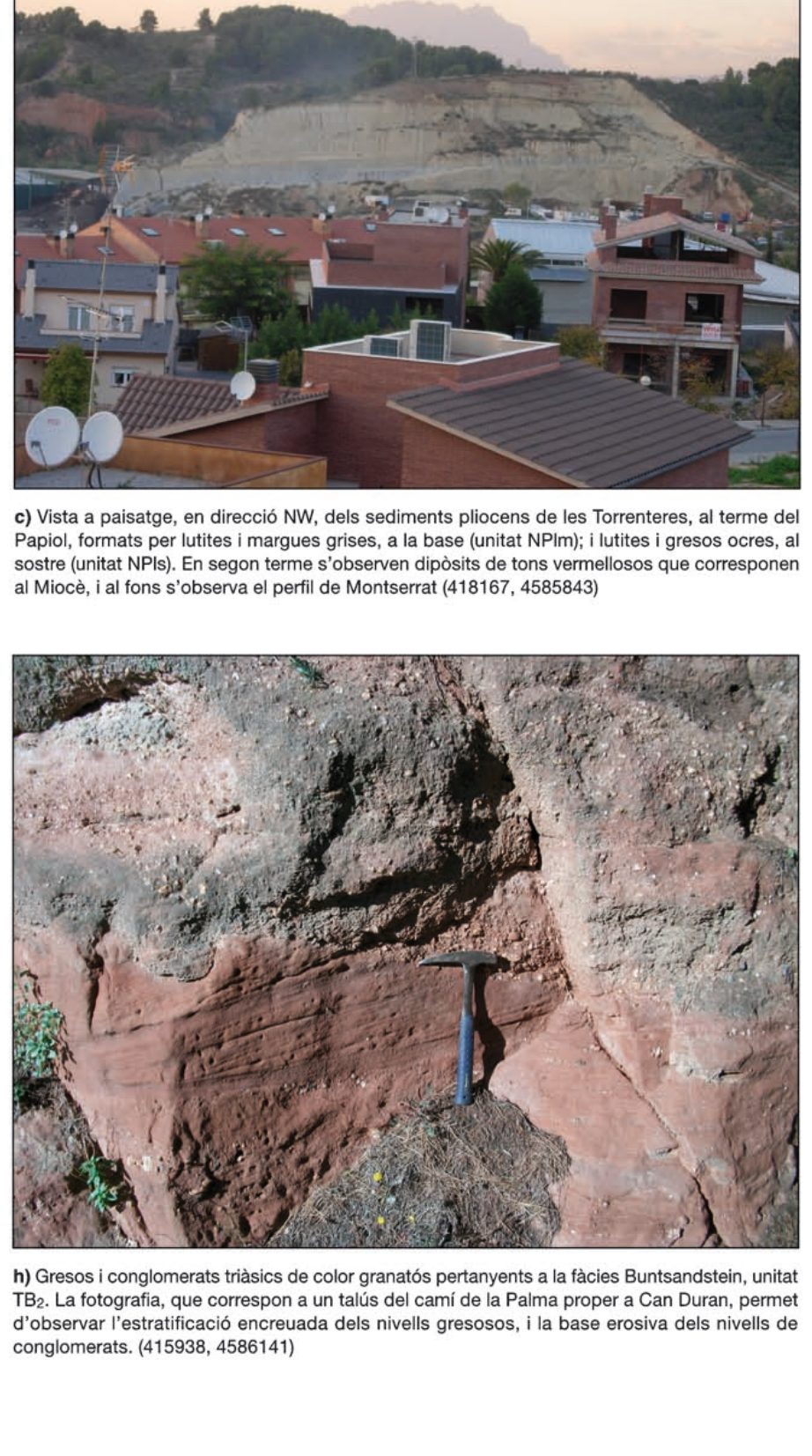
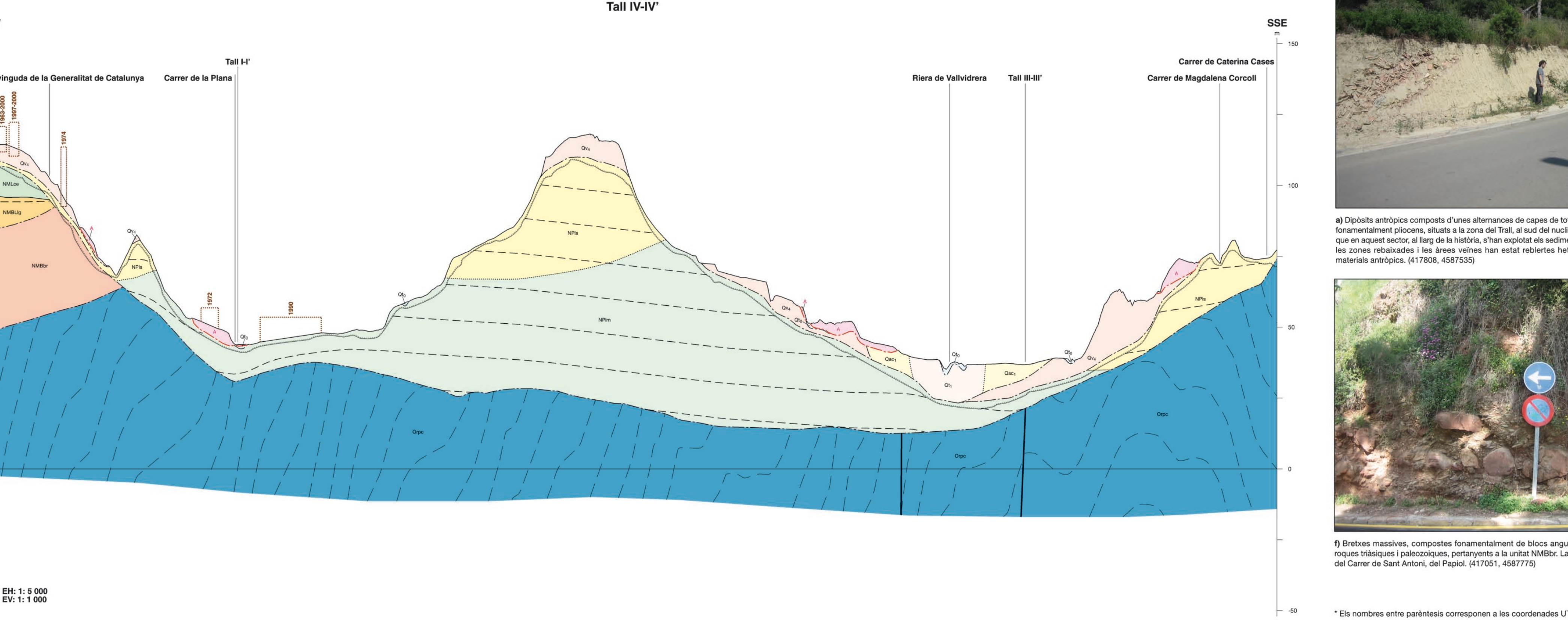


Table of geochemical compositions of representative samples, including elements like SiO2, Al2O3, Fe2O3, etc.

Notes and descriptions for the representative outcrop photographs.