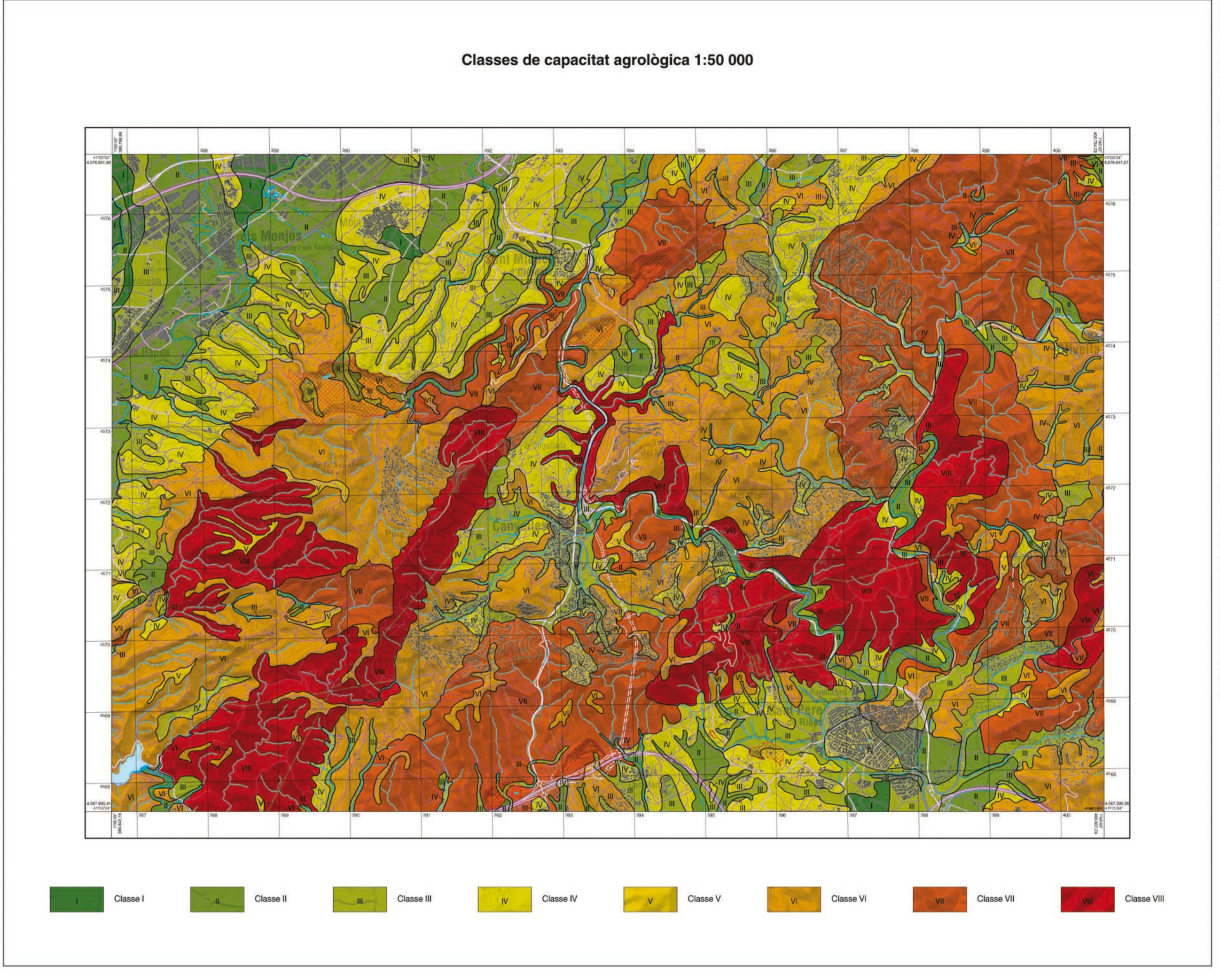
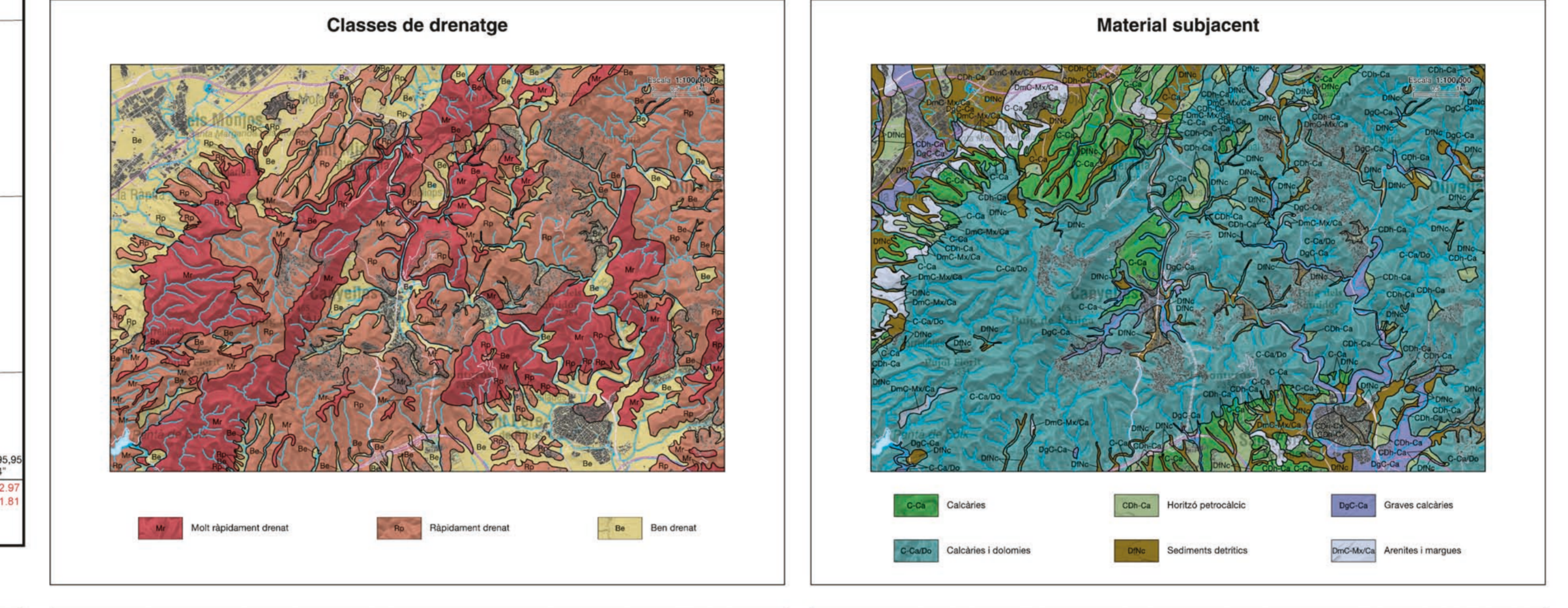
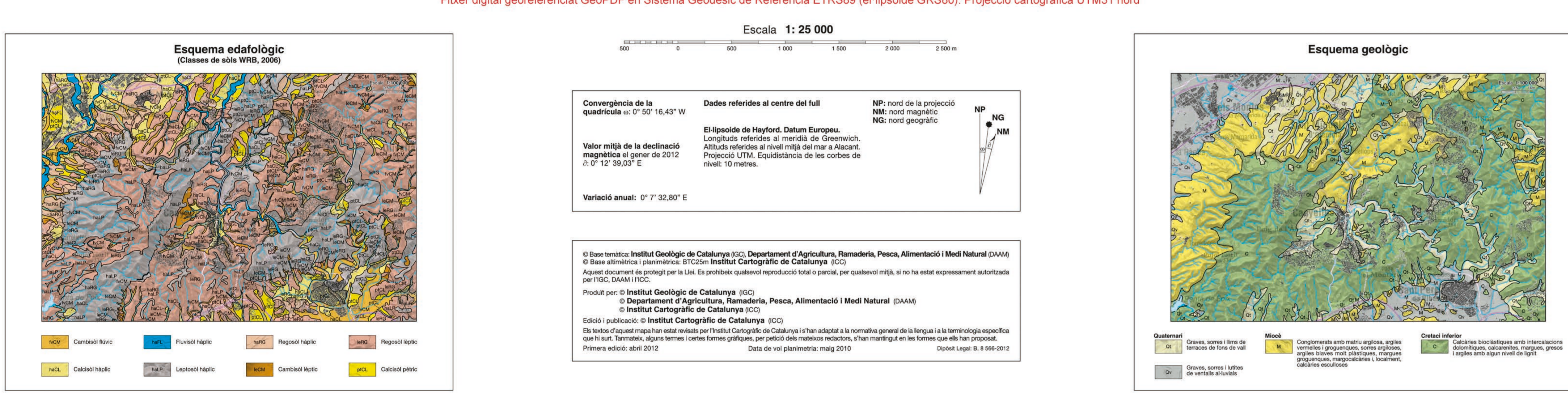


Legend for the main soil map, listing soil units (e.g., ABT, ARA, BON) and their corresponding classifications (SSS, WRB, 2006).

Legend for the agricultural capacity map, listing soil units and their corresponding agricultural capacity classes (e.g., Class I, Class II).



Resum metodològic (Methodological Summary) section, detailing the methodology used for soil classification and mapping, including sections on presentation, objectives, and classification criteria.

Tipus de sòls (Soil Types) section, providing detailed descriptions and characteristics for various soil types such as Sèrie Arboceat (OLIV-002), Sèrie Cattar (pèdon típic CHG-002), and Sèrie Lledó (pèdon típic SPR-007).

Propietats físicoquímiques del sòl (Physicochemical Soil Properties) section, presenting data tables for various soil units, including parameters like organic carbon, nitrogen, phosphorus, and cation exchange capacity.

Signes convencionals (Conventional Signs) section, detailing the symbols and codes used for soil units, drainage classes, and agricultural capacity classes on the maps.

Vertical sidebar containing additional maps and information, including a detailed geological map of Sant Pere de Ribes and a map of Catalonia with the study area highlighted.